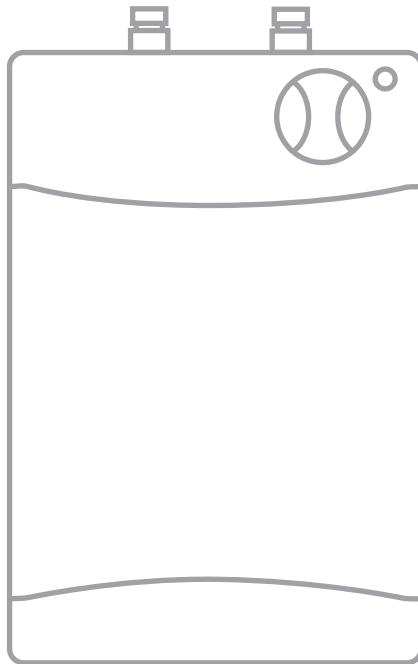




Product Instruction Manual

# Handyflow Undersink



**HF05MVC**

5L vented point of use water heater

Thank you for purchasing the Hycó Handyflow undersink water heater. The unit comes pre-wired and complete with a vented mixer tap and flexible hoses. The Handyflow is ideal for occasional use, light dishwashing at a single kitchen sink in the workplace, for example portable buildings, offices, shops, workshops, garages and other small commercial premises. Please read and understand these instructions before commencing installation, and leave them with the user when installation is complete.

## **1. Important safety points**

- The Electrical installation must be carried out by a qualified electrician in accordance with the current edition of the I.E.E. Wiring Regulations.
- This appliance must be earthed.
- Means for electrical disconnection must be incorporated in the fixed wiring in accordance with the wiring rules.
- Only connect the appliance to a single phase supply with a mains voltage as specified on the rating plate.
- It is essential that only open outlet fittings are used so the unit is not pressurised (vented mixer tap and hoses supplied).
- Always fit the heater the correct way up (pipes should be at the top)
- Use the lowest acceptable temperature setting to save energy and reduce lime scale.
- Do not connect to power unless the unit is full of water – open hot outlet and allow water to flow freely to clear air locks.
- Do not switch power on if water or pipes could be frozen.
- This appliance can be used by children aged from 8 years and above and persons with reduced physical, sensory or mental capabilities or lack of experience and knowledge if they have been given supervision or instruction concerning use of the appliance in a safe way and understand the hazards involved. Children shall not play with the appliance. Cleaning and user maintenance shall not be made by children without supervision.

## 2. Installation

### Wall Mounting

The Handyflow is normally fitted immediately below the outlet to be supplied, but it can be mounted above or to the side of the outlet provided it is vertical with the pipe outlets at the top. The unit can either be placed directly on the floor or fixed to the wall using the fixings provided.

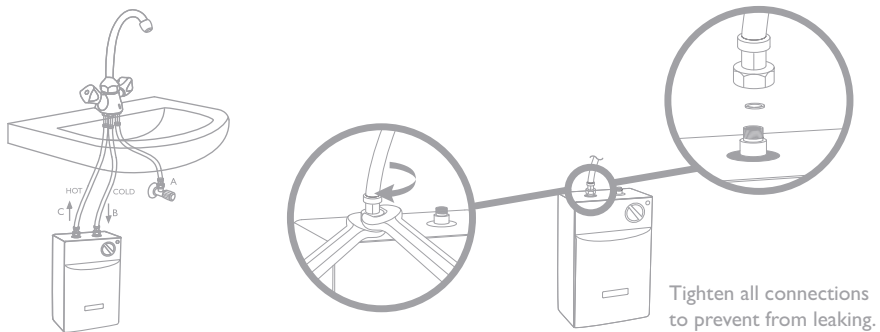


Ensure the mounting surface is strong enough to support the Handyflow including the weight of the water.

### Plumbing connections

The hot and cold fittings are at the top of the unit. These connections are colour coded (blue=cold, red=hot).

They are NOT interchangeable.



The diagram above shows a typical installation with the Hyco Vented mixer tap HFTAPO.

- All fittings are provided so connection can be made via 15mm compression fittings.
- Please follow manufacturer's instructions provided with the vented tap.

## Electrical

- The Electrical installation must be carried out by a qualified electrician in accordance with the current edition of the I.E.E. Wiring Regulations.
- Only connect the appliance to a single phase supply with a mains voltage as specified on the rating plate.
- Means for electrical disconnection must be incorporated in the fixed wiring in accordance with the wiring rules.
- This unit is supplied pre-wired. If the cable needs replacing, it must be replaced with a correctly rated cable and any work should be carried out by a competent person.
- In order to avoid a hazard due to inadvertent resetting of the thermal cut-out, this appliance must not be supplied through an external switching device such as a timer or connected to a circuit that is regularly switched on and off by the utility.

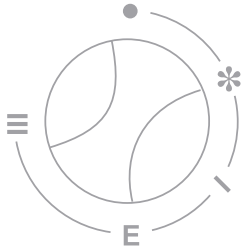


The unit is fitted with an auto-reset thermal cut-out which will operate for safety reasons in the event of the unit overheating. To reset the thermal cut-out switch off the power to the unit and allow it to cool down. Ensure the unit is full and then switch the unit back on. The thermal cut-out should reset itself.

### 3. Operation

Switch on power to the unit and select the desired temperature setting 1.

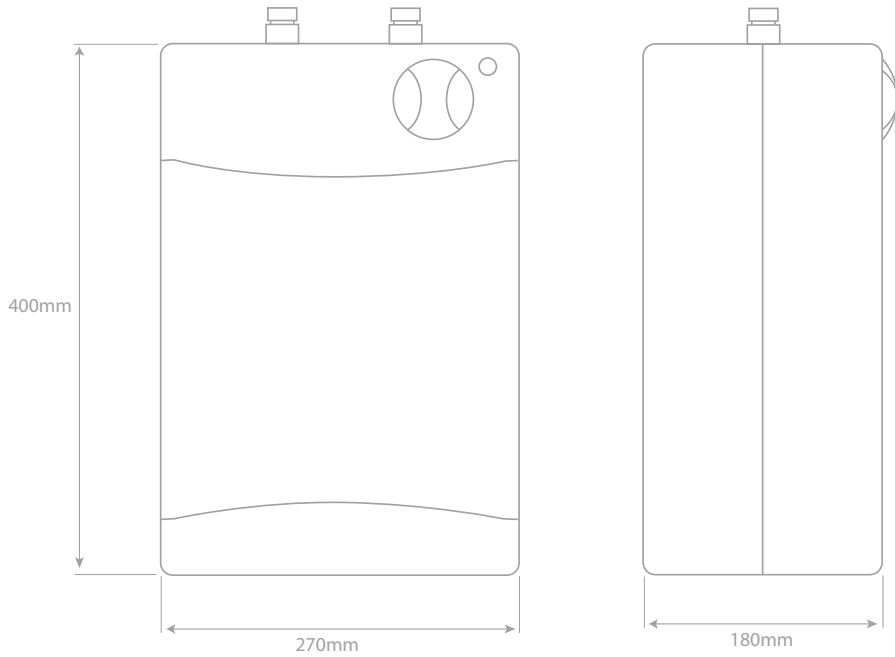
The indicator is lit when the element is on.



●	OFF
*	Frost protection. Element will switch on when water temperature falls below 7°C
I	Heats water to approx 25°C
E	Economy position. Heats water to approx 55°C
≡	Max temperature approx 80°C

## 4. Specifications

<b>Voltage</b>	<b>230v~50Hz</b>
<b>Power</b>	<b>2.0kW</b>
<b>Capacity</b>	<b>5L</b>
<b>IP Rating</b>	<b>IP24</b>
<b>Weight</b>	<b>3.5kg</b>



## **5. Guarantee and service policy**

This product is guaranteed against faulty materials and manufacture for a period of one year from the date of purchase. Hyco will in its sole discretion replace, repair or refund any faulty unit. Incorrect installation and failure to follow correct operating instructions are excluded. Consequential costs such as labour charges or damage to surroundings are expressly excluded.



INFORMATION FOR CORRECT DISPOSAL OF THE PRODUCT IN ACCORDANCE WITH THE EUROPEAN DIRECTIVE 2002/96/E.

At the end of its working life this equipment must not be disposed of as household waste. It must be taken to a local authority waste collection centre or to a dealer providing this service. Disposing of electrical and electronic equipment separately enables its components to be recovered and recycled to obtain significant savings in energy and resources. In order to underline the duty to dispose of this equipment separately, the product is marked with a crossed out dustbin.

Hyco Manufacturing Ltd  
Normandy Court  
Express Way  
Castleford, WF10 5NR

T 01924 225 200  
F 01924 225 210  
E [sales@hyco.co.uk](mailto:sales@hyco.co.uk)

[hyco.co.uk](http://hyco.co.uk)