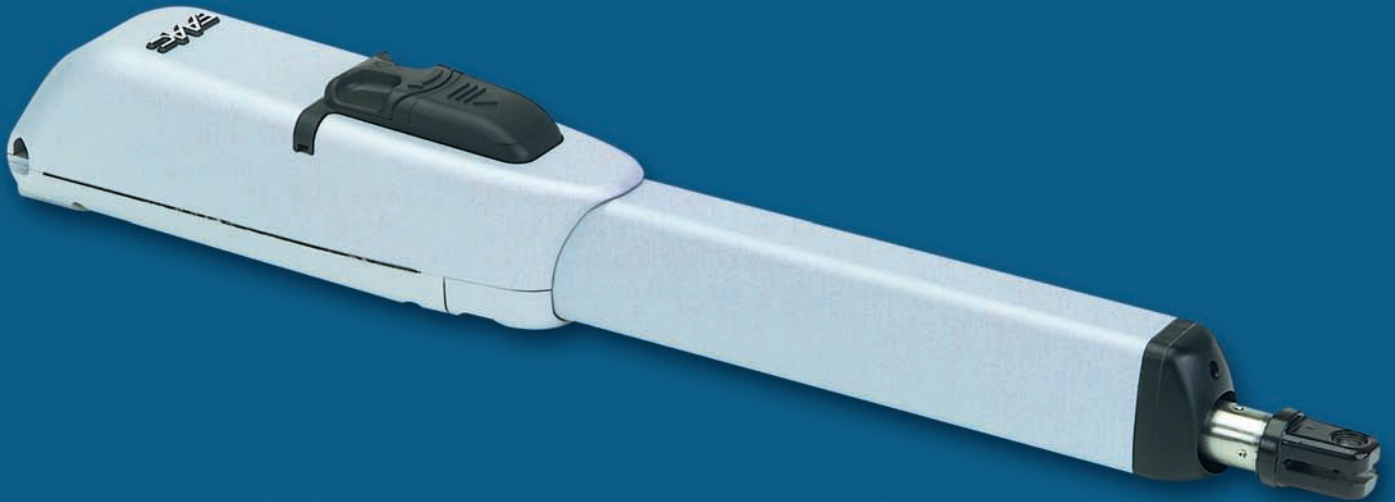


## Electro-mechanical Operators For Swing Gates



### 415 Range

The **415 Swing Gate Operator** is designed to efficiently move gates with leaves up to 4m in length - available in 230 volt and 24 volt versions.



**Reliable. Affordable. Dependable.**

**FAAC** ... Leading the way.



Excellence in Automation

# 415 Range



Limit Switch Adjustment

The 415 range has 8 Models:

- 415
- 415 with Limit Switch
- 415 Long
- 415 Long with Limit Switch
- 415 24V
- 415 24V with Limit Switch
- 415 24V Long
- 415 24V Long with limit Switch

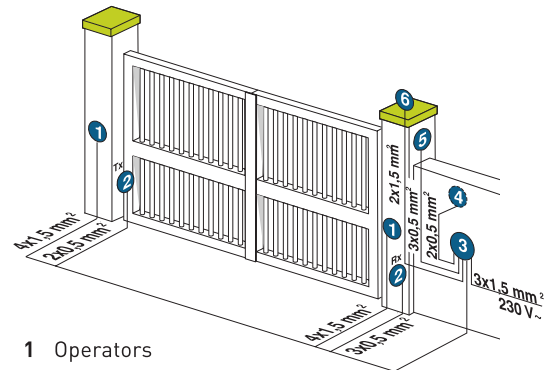
These energy-efficient motors are highly adjustable to allow maximum flexibility in installation dimensions.

With several versions to choose from the majority of installation requirements can be met. The LS versions are equipped with opening and closing limit switches to ensure the gate opens and closes fully whatever the weather. All versions are supplied with in-built opening and closing mechanical stops.

The non-reversing system ensures the gate is mechanically locked when the motor is not running. A convenient and secure release system with customised key makes it possible to manually move the gate in event of power failure.

The 415 range is the latest generation of swing gate motors from FAAC (UK) Ltd.

**Known for the extensive range of high quality products and innovative manufacturing techniques, FAAC continue to engineer reliable, versatile, leading-edge automation systems, chosen for residential and commercial installations on a worldwide basis. Providing high quality automation systems for gates, barriers, doors, parking and access control products, FAAC is the leading brand in the automation market.**



- 1 Operators
- 2 Photocells
- 3 Control board
- 4 Key push button
- 5 Receiver
- 6 Flashing lamp

## 415 Range Technical Specifications

	415	415LS	415L	415LLS	415-24V	415LS-24V	415L 24V	415LLS 24V
<b>Power supply:</b>	230 Vac				24V			
<b>Power:</b>	300 W				70W			
<b>Current:</b>	1.3A				3A			
<b>Thermal Protection:</b>	140°C				-			
<b>Capacitor:</b>	8uF							
<b>Thrust:</b>	300daN				300daN			
<b>Travel:</b>	300m		400m		300m		400m	
<b>Rod speed:</b>	1,6 cm/sec							
<b>Leaf max width:</b>	3 m		4 m*		3 m		4 m*	
<b>Use frequency at 20°C:</b>	30%	35%	30%	35%	100%			
<b>Approximate min. cycle/hour at 20°C:</b>	30		25		75			
<b>Operating ambient temperature:</b>	-20° C - +55° C							
<b>Operator weight:</b>	7.8 Kg		8 Kg		7.8 Kg		8 Kg	
<b>Operator length:</b>	840		935		840		935	
<b>Operator dimensions:</b>	835 (940 L version) x 105 x 148 mm (L x H x W)							
<b>Protection class:</b>	IP 44							

\*with leaves exceeding 3 m the fitting of an electric lock is required to ensure the leaf locking



Manual release Mechanism

