

## The Largest Manufacturer

Kidde's heritage goes back to 1917 with the founding of the Walter Kidde Company in the USA, which produced the world's first integrated smoke detection and carbon dioxide extinguishing system for use on-board ships. Today, Kidde produces over 30 million CO, smoke and heat alarms every year for its



international customer base at its Manufacturing Centre in China. This 280,000ft<sup>2</sup> facility has internationally recognised ISO 9000 quality certification, as well as a regular stream of quality awards.

## The Latest Technology

As part of the multi-billion dollar United Technologies Corporation (UTC), Kidde employs UTC's 'Achieving Competitive Excellence' (ACE) continuous improvement process program. Continuous product development and innovation are central to Kidde Fyrnetics and new technologies are being introduced for greater reliability and ease of use – now available on select **NEW Slick®** models including:

**NEW** Polymer Lithium battery backup, as used in many high-end electronic products.

**NEW** Latching LED after activation, so that the initiating alarm can be identified.

More detailed information on each **NEW Slick®** product is available on Product Datasheets and the website [smoke-alarms.co.uk](http://smoke-alarms.co.uk)

## Unrivalled Product Range

As the world leaders, manufacturing 30 million smoke, heat and carbon monoxide alarms every year, Kidde Fyrnetics offers an unrivalled choice of products to suit every need in housing. In addition to the **NEW Slick®** range, a cable-harness range of hard-wired smoke and heat alarms is also available. Two other ranges will be of particular interest to housing providers -

### Hard-Wired CO Alarms

Resulting from Kidde's unrivalled international expertise in carbon monoxide detection, the hard-wired CO alarm range offers the very best, long-term quality and security. Complying with BS EN 50291:2001 the alarms are also BSi Kitemarked. They use electrochemical technology with a stable performance over time, proven by independent and accredited laboratories, and frequent air sampling – every 15 seconds rather than the 60 seconds or more intervals of some products. Kidde Fyrnetics produce their own CO cells – the key component – rather than buying them in. The digital display version includes extra features including memory and peak recall facilities and parts per million shown when CO is detected.



The unique Smart Interconnect feature enables a number of these CO alarms to be hard-wire interconnected with Slick® smoke and heat alarms. When a smoke or heat alarm is triggered by a fire, all the alarms – including CO alarms – activate to alert occupants of danger, giving whole property protection. The hard-wired CO alarms have different, distinct alarm sounder patterns for carbon monoxide and fire – supported by different digital display messages on the digital model.



**TEN-4** Developed for fast protection in social housing, TEN-4 is a self-contained, battery powered, state-of-the-art Optical Smoke Alarm, specially designed for quick and simple installation by non-electricians. TEN-4 has a new compact design and a smaller diameter of just 104mm, reducing visual impact when installed. It is BSi Kitemarked and both smoke alarm and sealed-in battery are guaranteed for a full 10-year life.

# Kidde Fyrnetics

## NEW *SLICK*® range



- **NEW** wireless interconnect capability
- **NEW** screwless double-decker terminal block
- **NEW** wireless remote Test & Hush switch
- the only fast fit rechargeable alarms with **10 Year** Guarantees

### Hard-wired smoke & heat alarms for housing

from the world leaders manufacturing over 30 million smoke, heat and carbon monoxide alarms every year

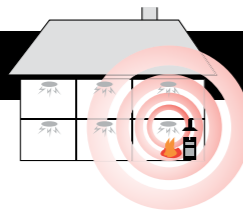


Developed specifically to solve problems encountered with many other alarms for UK social and private housing, Slick® is still the only range of fast-fit rechargeable smoke and heat alarms guaranteed for 10 years. Now, the second generation NEW Slick® includes the latest technology and extra features making it even better and the cost-saving alternative for housing today.



With a matching family appearance, Slick® interconnectable optical and ionisation smoke alarms and heat alarms can be used together for optimum coverage. Integral rechargeable lithium batteries provide 6 months continuous backup in the event of mains failure. Loose battery versions, guaranteed for 6 years, are also available using the best alkaline type available. All Slick® alarms are BSi Kitemarked to reinforce the consistent quality provided by the world's largest manufacturer.

**Even More Flexible**



**NEW Wireless Interconnect Capability**

Using the NEW Slick® Wireless Alarm Base accessory, in place of the standard base plate, NEW Slick® smoke or heat alarms can be interconnected wirelessly. This facility is ideal in existing buildings to avoid disruptive interconnect cabling, with each alarm powered from an adjacent lighting circuit. It is also particularly useful for extending an existing Kidde Fyrnetics Slick® or Firex hard-wired interconnect installation. Here, a single Wireless Alarm Base (with its NEW Slick® alarm) is hard-wire interconnected to the existing system and communicates via radio with added NEW Slick® units. This also enables a wireless Remote Test & Hush switch to be added.

**Hard-Wired and Smart Interconnect**

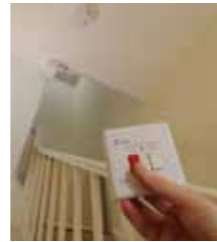


Up to 24 Slick® alarms and accessories can be hard-wire interconnected – a straightforward arrangement for new-build or major renovation work where the alarms are powered from a separate circuit. Here, Kidde Fyrnetics' unique 'Smart Interconnect' system can add whole-house safety cover, with the company's CO alarms hard-wire interconnected with Slick® smoke and heat alarms.

**Easier to Use**

**NEW Remote Test & Hush**

The Remote Test & Hush unit is used to communicate with a NEW Slick® alarm, via a Wireless Alarm Base, which might otherwise be difficult to access. It is particularly useful for elderly or disabled people, or where alarms are fitted on high ceilings.



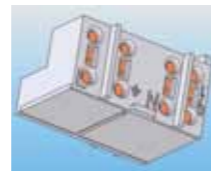
**Simple to Operate**

Slick® alarms are particularly user-friendly with separate Test and Hush buttons, informative red and green LED indicators, and auto-reset after activation. Every alarm is supplied with a comprehensive User Manual, as well as separate Installation Manual – both of which can also be downloaded from our website.

**Simpler to install**

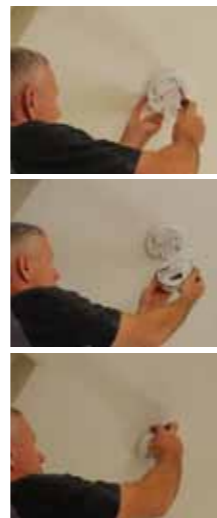
**NEW Screwless Terminal Block**

All NEW Slick® alarms have an integral, double-decker screwless terminal block on the base plate for fast, push-fit connection, as well as extra space for cables in the base plate. Connections can be released simply by inserting a screwdriver into the terminal slot.



**Quick to fit**

All Slick® alarms incorporate a unique fast-fit system saving installers time and money. Here, the separate base plate can be installed and its integral terminal block wired at first fix if appropriate. Then, near completion, the alarm simply slides onto the base plate hinge and locks into place by default. No cable harness is needed and the unique hinged connector makes removing the alarm for maintenance that much simpler, as it will hang on the hinge until pulled off. For maintenance, alarms are simply replaced on existing base plates without rewiring.



**3SFWR Heat**



Lic No: 503753  
BS 5446: Pt. 2: 2003

**2SFWR Optical**



Lic No: KM524754  
BS EN 14604: 2005

**1SFWR Ionisation**



Lic No: KM524754  
BS EN 14604: 2005



**Heat 3SFW**

135mm diameter x 73mm deep

**Optical 2SFW**

135mm diameter x 60mm deep

**Ionisation 1SFW**

135mm diameter x 60mm deep



**Heat Alarms** – for use in humid or dusty environments where smoke alarms will not operate satisfactorily, such as kitchens, boiler rooms, unconverted attics and garages. They are triggered when the ambient temperature reaches 57°C and must always be interconnected with smoke alarms from the same product range.

**Optical Smoke Alarms** – for use in escape and circulation routes and in areas where there is danger of ignition of furniture and surroundings by cigarettes. Best suited to slow, smouldering fires such as PVC cabling, foam-filled furniture or bedding material. Less prone to nuisance alarms than ionisation alarms from cooking particles and steam near kitchens.

**Ionisation Smoke Alarms** – for use where a fast flaming fire (for example, electrical equipment igniting) is more likely to be a hazard than a slow smouldering one, such as dining and living rooms. More prone to nuisance alarms from cooking particles and steam near kitchens. Containing a very small amount of Americium 241 radioactive material, which may be a consideration for storage and disposal.

**NEW SLICK® Wireless Alarm Base**



The Wireless Alarm Base can simply be fitted in place of the standard base plate on NEW Slick® ('wireless capability') alarms. It is mains operated with rechargeable battery (providing 3 months continuous backup) and easy to set up, using just two buttons supported by LEDs. It can communicate with other Slick® Wireless Base units – and also the Remote Test & Hush unit where required – using radio signals. Up to 15 Wireless Alarm Bases can be interconnected in one system.

**Other Accessories**

**Relay Pattress**

Please contact your local Kidde representative for information on Relay output configurations.

**NEW SLICK® Portable Remote Test & Hush**

KN-RTH-RF



The Remote Test & Hush unit is simply wireless linked to a NEW Slick® Wireless Alarm Base and can be used to test that alarm. It can also be used to silence the linked alarm or all but the initiating interconnected alarms. The unit is self-contained with an integral lithium battery and designed to operate reliably for 10 years under normal conditions. It is easy to set up and can be wall mounted with the bracket supplied, if required, then simply unclipped for portable use, for example in another room.

Size: 88mm x 88mm x 30mm deep