

# SCH Fan Assisted Heaters for 600 x 600 Ceiling Grid

- High quality commercial fan heaters manufactured in the UK
- Ceiling mounting allows free use of floor and wall space
- Suitable for a wide range of commercial premises

## Applications

- Shops
- Cafes
- Changing rooms
- Entrance Areas

## Features

- Designed to rest in the T bar of a 600 x 600 suspended ceiling grid
- Air inlet and outlet through the front panel – no requirement for air supply from the ceiling void
- White aluminium egg-crate grille supplied with every heater
- Pre-wired to convenient rear-mounted terminal enclosures
- Output can be reduced from 'high' to 'low' by removing link in terminal enclosure
- Built-in electronic thermostat ('T' suffix only)
- All models can be switched directly by the CS-7 switch and/or RST2-IN or RST-TP thermostat



CS-7 switch for high/low/fan only settings



3kW and 4.5kW heaters and grille



6kW heater and grille

## Heater range and pricing

Model	kW	Built-in Thermostat	List Price
SCHG-30	3.0	No	£228.00
SCHG-30T	3.0	Yes	£303.00
SCHG-45	4.5	No	£270.00
SCHG-45T	4.5	Yes	£342.00
SCHG-60	6.0	No	£378.00
SCHG-60T	6.0	Yes	£460.00

## Physical Data

kW	Dimension (mm)			Required clearance above grid (mm)	Weight (kg)
	W	D	H		
3.0	576	592	153	200	9
4.5	576	592	153	200	10
6.0	576	592	152	200	13

Performance Data						
kW		Volts	Airflow (m <sup>3</sup> /h)	dB*@2m	Recommended Mounting Height (m)	
High	Low				Min	Max
3.0	2.0	230	245	56	2.4	3.0
4.5	2.25	230	345	60	3.0	4.0
6.0	4.0	230	490	58	2.4	3.0

\*Noise levels are factory tested not laboratory tested

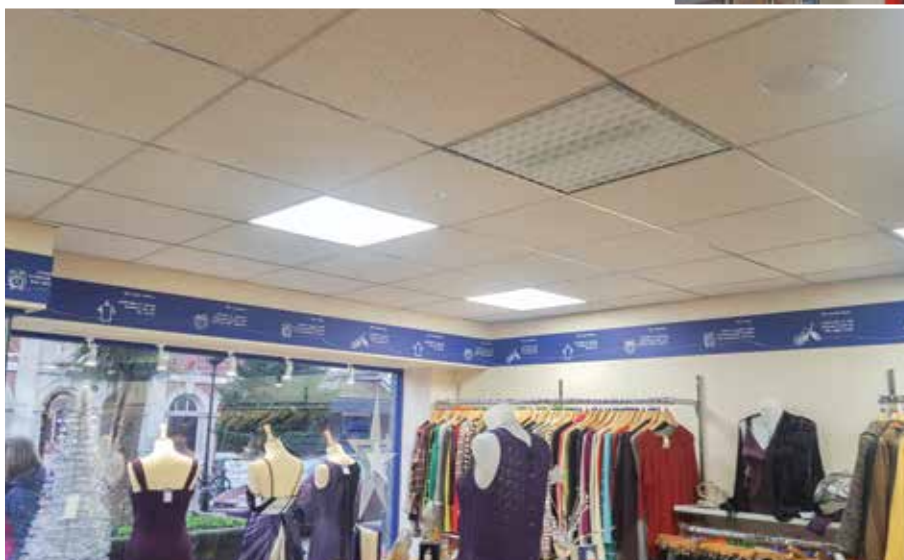
Control Options and Prices				
Type	Description	Model	Details	List Price
Switch	On/off/high heat/low heat/fan only	CS-7	Page 77	£60.00
Thermostat	Adjustable thermostat (not for use with 'T' suffix models)	RST2-IN	Page 72	£74.00
Thermostat	Tamperproof thermostat (not for use with 'T' suffix models)	RST-TP	Page 71	£80.00



SCH heater installed in a school outfitters



An SCH fan heater provides simple and reliable heating in a car service reception area



Heater specifically designed for integration into a suspended ceiling grid

**FOR MULTI-HEATER SYSTEMS WE RECOMMEND OUR SYSTEM X - See PAGE 26**