

INSTALLATION GUIDE

CAVIUS UK CO ALARM

Carbon monoxide alarm device
Commercial reference : 4002-008
Developed by CAVIUS

This Cavius carbon monoxide (CO) alarm is designed and tested to detect CO in private homes, camping trailers, mobile homes and caravans. It will provide early warning of the presence of CO.

PLEASE READ THE USER GUIDE CAREFULLY BEFORE INSTALLATION AND RETAIN FOR FUTURE USE.

SAFETY INSTRUCTIONS:

The device comes with a 3V lithium battery. Batteries are to be handled with care and battery powered devices should be kept out of reach of children. Do not try to recharge or burn the batteries.

INFORMATION ABOUT CARBON MONOXIDE:

CO - Carbon monoxide - is known as the "silent killer" because it is odourless, tasteless and colourless. It can kill in few minutes. This apparatus may not prevent the chronic effects of Carbon Monoxide exposure.

All people are at risk for CO poisoning. Unborn babies, infants, the elderly, and people with chronic heart disease, anemia, or respiratory problems are generally more at risk than others. The apparatus will not fully safeguard individuals at special risks

Breathing CO can cause headache, dizziness, vomiting, and nausea. If CO levels are high enough, you may become unconscious or die.

1. TECHNICAL INFORMATION:

Diameter: 40mm **Height:** 38mm.

Type of alarm: Type B apparatus with electro-chemical CO sensor.

Battery: Powered by a non-replaceable 3V CR123 Lithium battery with 10-year life (included).

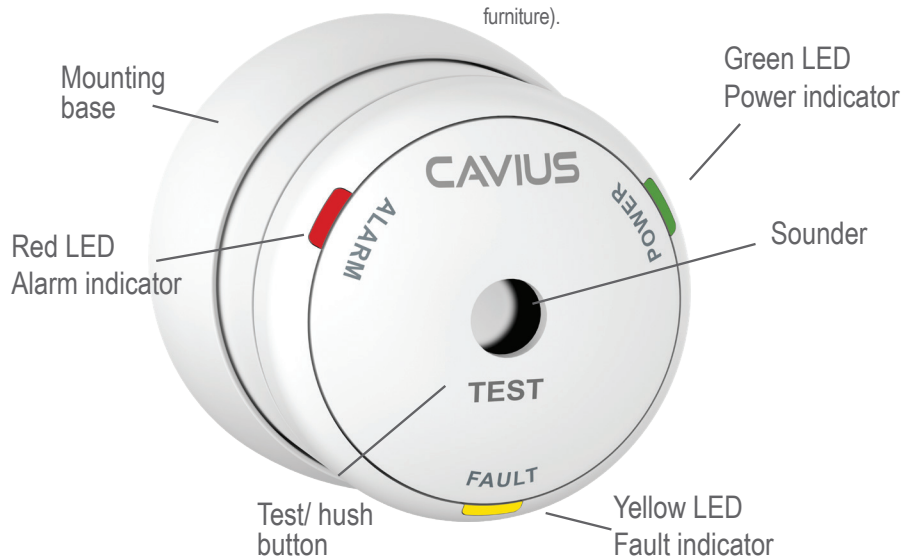
IMPORTANT: Do not try to replace the battery. Replace the product if the battery fails.

Product Life: 10 years after manufacturing date.

Complies to standards: EN50291-1:2018, EN50270, EN50271, EN60335, RoHs, REACH.

Working condition: -10 to +40°C, 30 to 95% non-condensing.

Storage/Transport: -20 to +50°C, 10 to 95% non-condensing.



Alarm Sound Level: The minimum sound level is 85 dB at 3 meters.

2. THE BEST AREAS TO INSTALL YOUR CO ALARM:

- Ideally, an apparatus should be installed in every room containing a fuel-burning appliance.
- Near bedrooms and living areas.
- On each level of your home.
- 1 to 3 meter away from all fuel burning appliances.
- At eye level to allow optimum monitoring of the indicator lights.
- Install as High as possible as CO rises when mixed with heat.
- You can fit on a wall but as high as possible.

Siting of CO alarms



3. AREAS WHERE NOT TO INSTALL CO ALARMS:

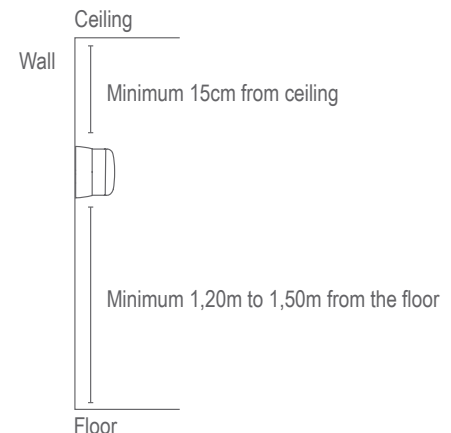
- In an enclosed space (for example in a cupboard or behind a curtain).
- Where it can be obstructed (for example by

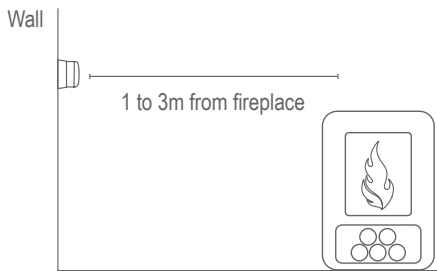
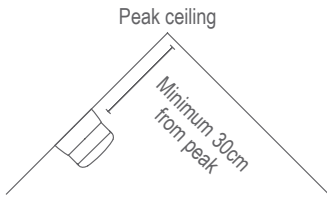
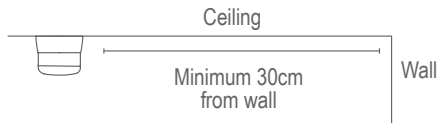
furniture).

- Directly above a sink.
- Next to a door or window.
- Next to an extractor fan.
- Next to an air vent or other similar ventilation openings.
- In an area where the temperature may drop below -10 °C or exceed 40 °C.
- Where dirt and dust may block the sensor.
- In a damp or humid location.
- In the immediate vicinity of a cooking appliance.

4. PLACEMENT:

The CO alarm is designed to be installed on the wall or a ceiling.





5. INSTALLING YOUR CO ALARM:

CAUTION: This alarm should be installed by a competent person.

The installation of this device should not be used as a substitute for proper installation, use and maintenance of fuel burning appliances, including appropriate ventilation and exhaust systems.

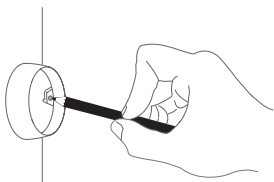
It does not replace a smoke alarm.

Installation with screw and plug:

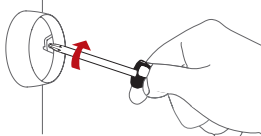
Detach the alarm from the mounting base by twisting counter clockwise.

Use the mounting base to mark up **horizontally** the screw holes on the wall.

Mark up screw holes with a pen



Use the enclosed screws and plugs for installation



Attach the alarm by twisting clockwise.

Please note: The label in the product must not be removed as it contains important information regarding the product.

6. TEST FUNCTION:

After installation and at least once per quarter, test your alarm to make sure it is operating correctly. It is recommended to check visually every week if the green LED flashes correctly (every minute)

When the top button is pressed the alarm sounder will sound, and when the button is released, the alarm will make a self-test of the sensor and battery for approximately 9 seconds. During this delay the three LEDs will be flashed in sequence. The result of the test will be indicated after the test has been completed.

If the test passes, the green LED will emit for 3 sec. If the test fails, a fault indication will be given (See section 11).

After the test function is performed, the alarm will need to recover for one minute before the next test can be done (to allow the sensor chamber to re-settle after the test current is applied).

The alarm will also do a self-test every 24 hour and test the sensor for faulty sensor, drift or short circuit.

TIP: It is safe to cover the sound output hole with your finger during the testing to minimize the sound level emitted.

7. OTHER INFORMATION:

Do not paint the alarm.

Disposal: Please dispose the product properly at the end of life. This is electronic waste which should be handled properly.

WARNING: Batteries shall not be exposed to excessive heat such as shine, fire, or the like. Note the local country regulations regarding installation.

WARNING: To prevent injury, this apparatus must be permanently fixed to the ceiling/wall in accordance with the installation instructions.

The CE mark affixed to this product confirms its compliance with the European Directives which apply to the product.



All Rights reserved: CAVIUS Aps assumes no responsibility for any errors, which may appear in this manual. Furthermore, CAVIUS Aps reserves the right to alter the hardware, software, and/or specifications detailed herein at any time without notice, and CAVIUS Aps does not make any commitment to update the information contained herein. All the trademarks listed herein are owned by their respective owners. Copyright © CAVIUS Aps.

Developed by CAVIUS Aps Julsøvej 16, DK-8600
Manufactured in P.R.C.

Contact: CAVIUS Ltd, Edinburgh, Scotland, EH3 9DQ
Tel: +44(0)1506 896785, www.cavius.com

