

USER'S GUIDE

CLIMASTAR®



SLIM

INDEX

1. INTRODUCTION.....	3
2. WALL SUPPORT.....	4
3. SETTING UP.....	5
3.1 Starting the Slim Towel Radiator.....	5
3.2 Timer Mode.....	5
4. TECHNICAL CHARACTERISTICS.....	6
5. FAQ's.....	6
6. WARRANTY TERMS AND CONDITIONS.....	7

1. INTRODUCTION

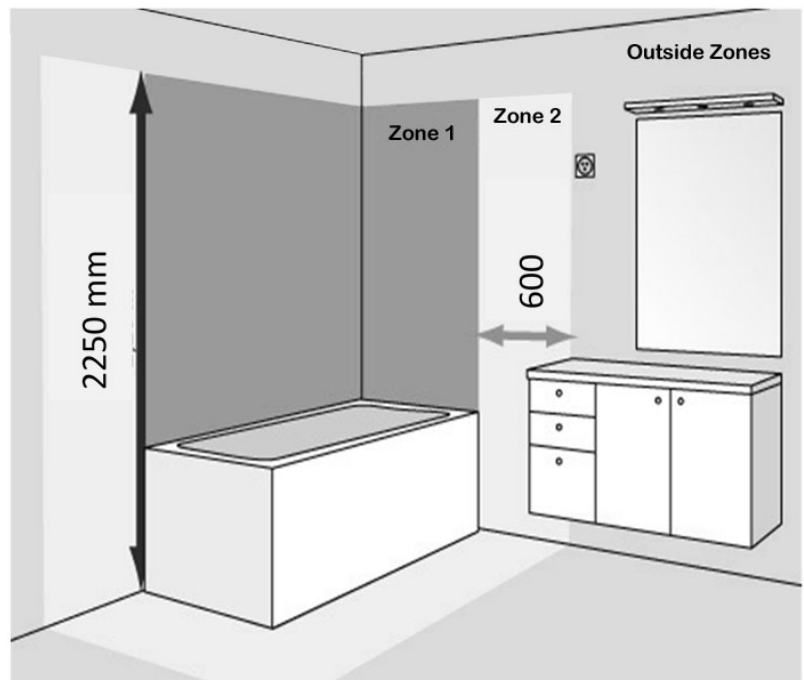
- Please, read this user guide carefully before installing your device.
- Before connecting the heater check that the supply voltage is the same as that stated on the heater.
- This device is supplied with a three core cable consisting of Live(Brown), Neutral(Blue) and Pilot(Black) wires.
- DO NOT locate this heater immediately beneath an electrical outlet.
- **IMPORTANT SAFETY ADVICE** - When using electrical appliances, basic precautions should always be followed to reduce the risk of fire, electrical shock, and injury to persons, including the following:
 - If this heater is installed in a room containing a bath or shower, it should be so installed that switches and other controls cannot be touched by a person using a bath or shower.
 - The installation of this product should be carried out by an electrician or competent person and be in strict accordance with the current IEE Wiring Regulations and relevant Building Regulations. The heater must be installed in accordance with these instructions.
- If the supply cord is damaged, it must be replaced by the manufacturer, its after sales service agents or any other competent qualified person.
- Not intended for use by children under the age of 3 unless duly supervised.
- Children over 3 and below the age of 8 must only turn on/off the device whenever it has been duly placed or installed, and has been given supervision or instructions concerning use of the appliance. Children from 3 to 8 must not regulate or clean the device, nor carry out any maintenance activity.
- Not intended for use by persons (including children over 8) with reduced, physical, sensory or mental capabilities, or lack of experience and knowledge, unless they have been given supervision or instruction concerning use of the appliance by a person responsible for their safety. Cleaning and maintenance must not be carried out by children without prior supervision.
- The device can be cleaned with a damp cloth or with any conventional cleaning cloth.
- **WARNING:** The surfaces of this heater can become very hot. Momentary contact with any part of the heater should not cause injury. However, aged or infirm persons or young children should not be left unsupervised in the vicinity of the heater unless a suitable guard is fitted.

2. WALL SUPPORT

The device includes a mounting kit with the required hardware (rawl plugs, screws and Allen key). The rawl plugs supplied with the mounting kit cannot be used on dry walls. For this type of wall, special rawl plugs must be used.

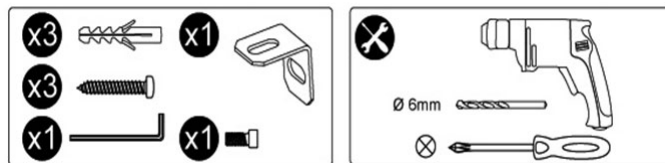
This device should not be installed in Zone 1 or Zone 2 but can be installed outside these zones.

	SLIM	
POWER	250w	500w
Height (mm)	500	1000
Width (mm)	250	250
Depth (mm)	40	40

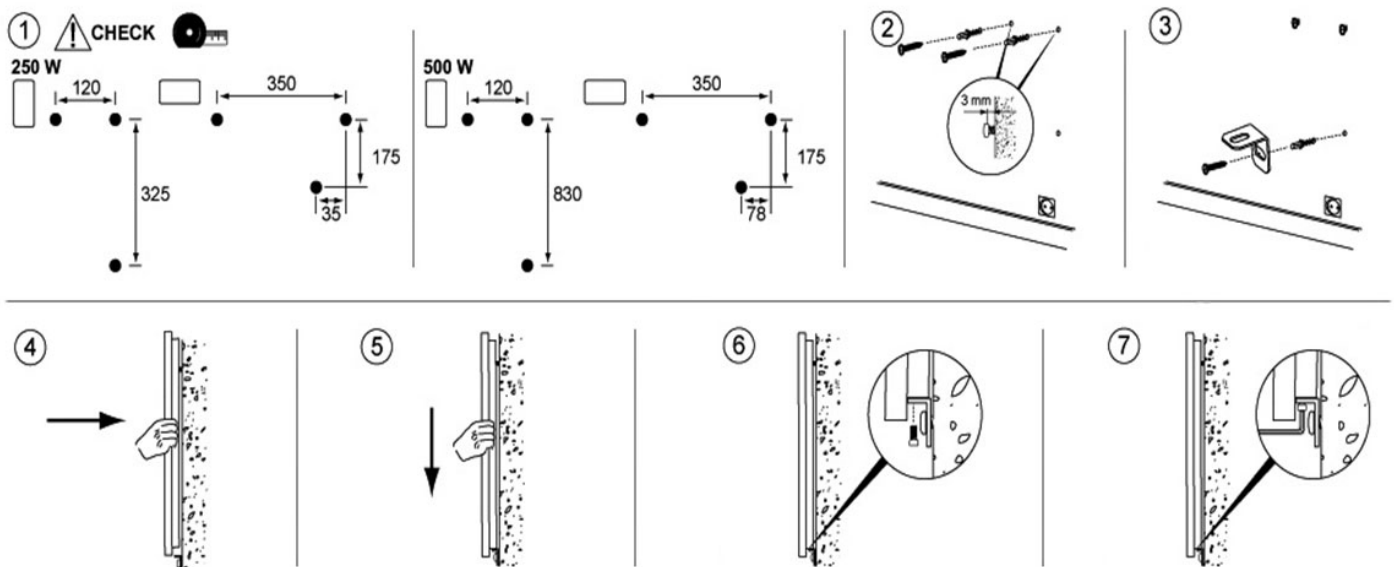


The Slim Towel Radiator can be mounted vertically or horizontally. Once you have decided where to install the device, remove all the packaging and extract the Slim Towel Radiator and its mounting kit.

Fixings and required tools:-



Mounting the Slim Towel Radiator:-



⚠ Check measurements and levelling before drilling. All measurements are in millimetres.

3. SETTING UP

3.1 - STARTING THE DEVICE

With a mains supply going to the radiator, click the switch on the side to the 'I' position. The switch LED flashes and the device is working.




The device starts to heat.

To switch off the device, click the switch on the side to the off position, the switch LED turns off.

3.2 - TIMER MODE

The device works as long as the user selects one of the setback or operating times, 1h - 4h - 8h.

To select a setback time Press the  button until you reach the required operating time. The options are 1h for 1 hour, 4h for 4 hours, 1h+4h for 5 hours, 8h for 8 hours, 8h+1h for 9 hours, 8h+4h for 12 hours and 8h+4h+1h for 13 hours.



After the set operating time has finished the LED switches off indicating that the device is now turned off.

To deactivate the timer function, click the switch on the side of the device and turn the unit off.

4. TECHNICAL CHARACTERISTICS

MEASUREMENTS AND WEIGHTS	
Model Type	SLIM 250W
Measurements	250 x 500 x 40 (mm)
Weight	5.2Kg
Model Type	SLIM 500W
Measurements	250 x 1000 x 40 (mm)
Weight	9.85Kg
TECHNICAL CHARACTERISTICS	
Voltage	230V/AC
Frequency	50Hz
Connections	Live(Brown), Neutral(Blue), Pilot wire(Black), *Note there is no Earth connection required.
Type of Protection	Class II, IP44
Safety Cut-out Thermostat	Automatic – Cut-off T ^a 90°C ± 0.5°C - Reset T ^a 65°C ± 10°C
MATERIALS	
Back Frame	High Quality Steel
Front	DUAL KHERR

5. FAQs

PROBLEM	PROBABLE CAUSE	SOLUTION
The radiator does not heat up.	No power to device	Check that there is power to the radiator and make sure the switch at the side of the radiator is turned on.
The radiator does not operate.	No power to device	Check that there is power to the device and make sure the switch at the side of the device is turned on.
	Switch is Off	Make sure the switch at the side of the radiator is turned on. (position I)
	Safety cut-out has operated	If the safety cut-out has operated then the temperature has gone over 90°C, you must wait for the radiator to cool down to below 65°C.
No response from buttons.	Keypad has been locked	Press and hold down the clock button to release the lock.

6. WARRANTY TERMS AND CONDITIONS

Your CLIMASTAR product has been designed and tested to give you many years of trouble-free service. For your additional peace of mind, Climastar UK gives the following Warranty. Your statutory rights are not affected by this Warranty.

Subject as provided below. Climastar UK warrants to the original purchaser at the original installation site that its products will be free from defects in materials, electronic components and workmanship for the period of 5 (five) years.

The original purchaser's under this Warranty is expressly limited to repair or replacement of any part or parts found to be defective under conditions of normal service and use during the above Warranty period and does not extend to Climastar UK being liable for any incidental, special or consequential damages or losses whatsoever. Such as loss of use of the product, inconvenience or lost profits.

This Warranty does not cover any defect, damage or malfunction in the product which is due to; failure to comply in any respect with Climastar's installation, maintenance or operating instructions; faulty storage, handling, installation or repair; mis-use; neglect; accident; abuse; or general wear and tear.

To ensure that our products provide you with the service that we expect, it is important that they are installed in accordance with the British Electrical Standards and Approved codes of Practice.

Before free service under this Warranty can be provided, the original purchaser will be required to prove the date of purchase and may be required to provide Climastar UK with supporting information, as Climastar UK may need to conduct an investigation into the alleged defect.

Climastar UK reserves the right to make reasonable charges for the inspection and testing of any product which is subject to a Warranty claim and the rights conferred by the Warranty are conditional upon the payment of such charge. The charge may be made at Climastar UK's discretion, either before or after the inspection and testing of the product. In the event that it is established to Climastar UK's reasonable satisfaction that a valid Warranty claim has been made in respect of the product, then any charges which has been paid will be refunded in full by Climastar UK.

CLIMASTAR®

Climastar UK

Unit 3, East Bond Street
Leigh, Lancashire
WN7 1BP

Tel. 01942 670158
Fax. 01942 262221
www.climastar.co.uk