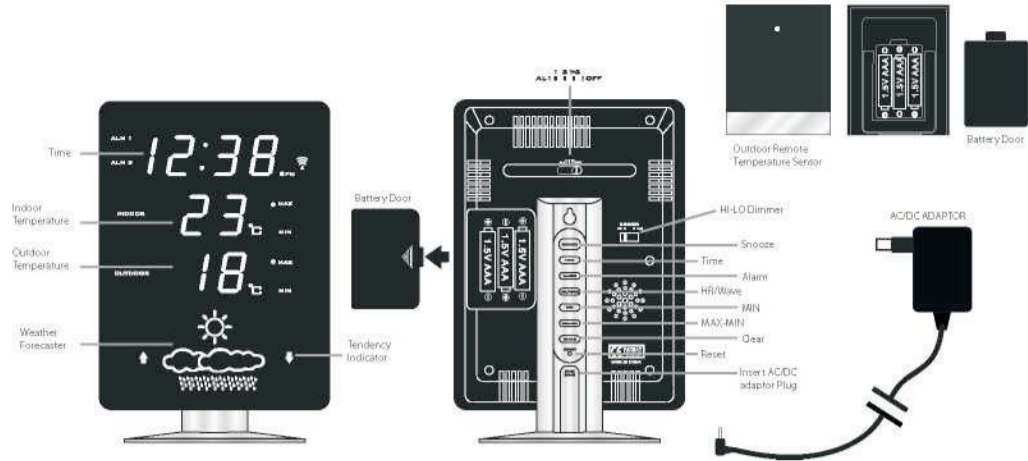


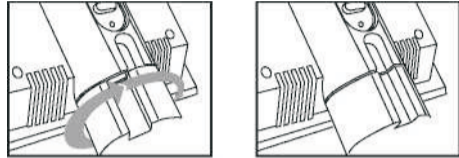
# Instruction Manual WS 6820



## Installation

1. Insert the round base to the back pole (as indicated) of your LED weather station, turn the base to the right to secure it in position.

2. Plug the AC/DC adaptor into any 230V European AC household outlet. Plug the DC jack into the lower back of the clock. The top front of the clock will show and the indoor-outdoor temperatures and weather forecast display will appear. Your LED weather station is ready to work for you.

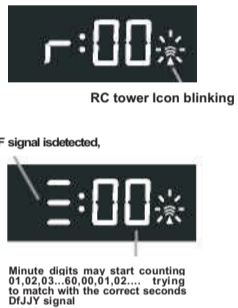


## Battery Back Up

- Slide the battery door at the back case, insert 3 x AAA batteries with correct + and - polarity signs inside the battery compartment. Replace the battery cover.
- When AC power is off, the batteries will power the clock to keep track of the time and alarm time.
- When only the back-up batteries is used, the LED panel is off.

## Power Up Reception and Signal Strength Display

- After plug in AC power, the clock starts to receive DCF signal. Icon blinks. Display shows .
- When strong DCF signal is detected, display shows with 3 bars . When weak or no DCF signal is detected, display shows with 1 bar or . You will need to place the clock to another area for better reception, or unplug the AC/DC jack to start over reception again. During reception, the signal strength may move from 1 bar to 2 bars to 3 bars. This is normal since the clock is detecting DCF signal and other signals in the air at the same time.
- If the clock does not catch DCF time signal for 7 minutes, it will go back to normal time display .
- During reception, press TIME button once will go to normal time display. Press HR again will return to reception mode and signal strength indication.

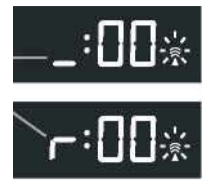


## Successful reception or failed reception

Icon becomes static on (stop blinking) when reception is successful Icon disappears when reception is failed



Weak or no RC signal is detected



## Automatic Reception and Manual Reception

Automatic reception : this clock starts reception automatically everyday at 1:00am. If auto reception fails at 1:00 am, it will start again at 2:00 am. If fails at 2:00 am, it will start again at 3:00 am.

If auto reception fails at 3:00 am still fails, it will start reception every 3 hours until it succeeds to catch correct DCF time.

Manual reception : press HR button once anytime to start manual reception of DCF time signal. The LED time display will go to radio controlled reception mode .

## To Set Time and Alarm Time

After power up, if press **TIME** button once, time digits go to 0:00 am (default start-up time). The clock continues to receive DCF signal. The is still blinking.



Press HR button once will go back to radio controlled reception mode (as above)



## TO SET TIME

Press and hold **TIME** button and at the same time press HR button once at a time to set hour.

Press and hold **TIME** button and at the same time press **MIN** button once at a time to set minute.



## TO SET ALARM 1 TIME

- Slide the Alarm Switch to **ALM 1**.
- Press and hold **ALM** button and at the same time press HR button once at a time to set hour.
- Press and hold **ALM** button and at the same time press **MIN** button once at a time to set minute.

## TO SET ALARM 2 TIME

- Slide the Alarm Switch to **ALM 2**.
- Press and hold **ALM** button and at the same time press HR button once at a time to set hour.
- Press and hold **ALM** button and at the same time press **MIN** button once at a time to set minute.

## TO TURN ON/OFF ALARM 1 or/and ALARM 2

- To turn on **Alarm 1** only, slide the alarm switch to **ALM 1**, ALM 1 LED lights up on upper left of the hour digits.
- To turn on **Alarm 2** only, slide the alarm switch to **ALM 2**, ALM 2 LED lights up on lower left of the hour digits.
- To turn on both **Alarm 1** and **2**, slide the alarm switch to **ALM 1 + 2**, both ALM 1 and ALM 2 LED light up.
- To in-activate both **Alarm 1** and **2** permanently, slide to **ALM OFF**. Both ALM 1 and ALM 2 LED turn off.

## TO USE THE SNOOZE ALARM

When time reaches the set **ALARM 1** and/or **ALARM 2** time, the clock will beep with the **ALM 1** and/or **ALM 2** LED blinking.

Press the **SNOOZE** button once, the alarm sound will stop and **ALM 1** or **ALM 2** LED keep blinking. Alarm will sound again in 5 minutes.

## TO STOP THE ALARM

When time reaches the set **ALARM 1** and/or **ALARM 2** time, the clock will beep with the **ALM 1** and/or **ALM 2** LED blinking.

Press and hold the **SNOOZE** button for 2 seconds, the alarm sound will stop and **ALM 1** or **ALM 2** LED becomes static. Alarm 1 and/or Alarm 2 will sound again same time next day.

## TO TURN OFF ALARM 1 AND/OR ALARM 2 PERMANENTLY

Slide the alarm switch to **ALM OFF**. Alarm sound will stop and both **ALM 1** and **ALM 2** LED's turn off.

## TO SET SNOOZE DURATION (from 5 to 60 minutes)

Press and hold **SNOOZE** and time display will show "05" (default snooze duration) and then press **MINUTE** button to set your desired snooze duration.

## TO READ MAXIMUM-MINIMUM INDOOR-OUTDOOR TEMPERATURES

Simply press the **MAX** button to view the maximum indoor and outdoor temperatures. Press **MAXCLEAR** to reset the Max readings. The readout will now appear as — and will start to record the maximums again.

Then press the **MIN** button to view the minimum indoor and outdoor temperatures. Press **MAXMINCLEAR** to reset the Min readings. The readout will now appear as — and will start to record the minimums again.

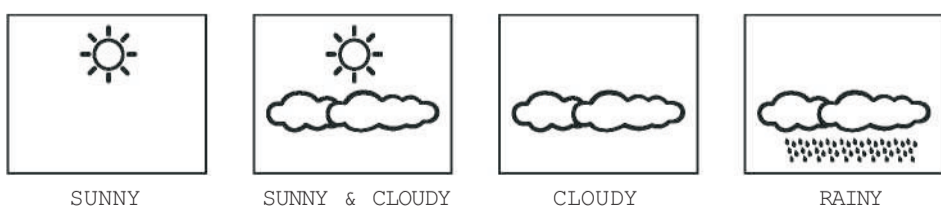
## IF YOU LOSE THE OUTDOOR TEMPERATURE

When the outdoor temperature digits show '—', the wireless transmission is either interrupted or lost. Press the **CLEAR** button at the back of your LED weather station, then press **RESET** button at the back of the outdoor transmitter. If you continue to lose the outdoor temperature display, try placing the transmitter in a different location until you have smooth transmission of temperature data.

## USING THE WEATHER FORECASTER AND BAROMETER

Your LED weather station has a built-in barometer which measures the barometric pressure. After power up, the display shows Sunny & Cloudy icons. Your LED weather station takes around 24 hours to gather data of barometric pressure changes and predicts next 12-24 hours weather conditions.

There are four types of weather display of the predicted weather condition :



Your weather forecaster also has weather tendency indicator, when the air pressure is going up (the weather will improve) the UP arrow will appear, when the air pressure is going down (the weather will go worse) the DOWN arrow will appear.

Remarks : Moving your weather station around your house or your building will affect its accuracy because the sudden change of temperature or height/altitude will affect the accuracy of your weather station. It will take 24 hours to get stable again to predict next 12-24 hours weather condition.

Your weather station predicts next 12 - 24 hours weather conditions. It may not match with the current weather condition outside.

## TROUBLE SHOOTING

Press the **RESET** button on the back of the base thermometer and then press **RESET** button located on the back of the outdoor transmitter. Once you do this, your clock will be reset to default setting and needs to be up-dated by DCF time signal again.

## TO USE THE HI-LO DIMMER SWITCH

Simply slide the **LO-HI DIMMER** switch at the back of the clock to adjust the LED brightness to a comfortable level to you in the dark.

## CARE OF YOUR CLOCK

- Do not expose your clock to extreme temperatures, water or direct sunlight.
- Avoid contact with any corrosive materials
- Do not subject the clock to excessive force, dust or humidity
- Do not open the inner back case or tamper with any components of this clock
- Do not plug in any other AC/DC adaptor with incorrect specifications or voltage
- Do not place your clock in range of strong interferences. (TV, Microwave...)