

aperta

APKITAO | AUDIO DOOR ENTRY SYSTEM
APKITAOH | ADDITIONAL SYSTEM HANDSET



USER MANUAL

www.espuk.com



Contents

Installation 3

 Step 1 3

 Step 2 3

System Connections Example 1 4

System Connections Example 2 5

User Guide 6

System Cabling

All system cabling (excluding mains 240vAC supply) has been tested with Cat5E UTP PVC cable.



Part Number - A8NFORCE5EUTP

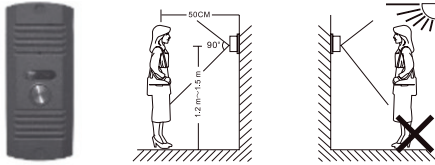
Find this product online:
elandcables.com | Cables & Accessories | LAN Cable | Cat 5E UTP PVC Cable





Installation

Step 1



Site the door station a recommended 1.5 meters from the ground, or to suit application.

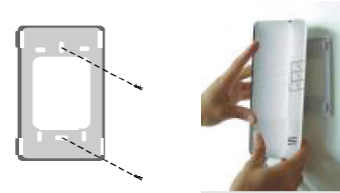
The door station needs to point in the direction of where a visitor will stand during operation.

Avoid areas of high sunlight and noise levels.



Surface mount the sun-shield of the door station and connect the system cabling. Mount the door station to the sunshield

Step 2



Site the handset to suit application.

Surface mount the bracket, make the system connections to the back of the handset and then slide the handset onto the bracket using the hooks to hold firmly in place.

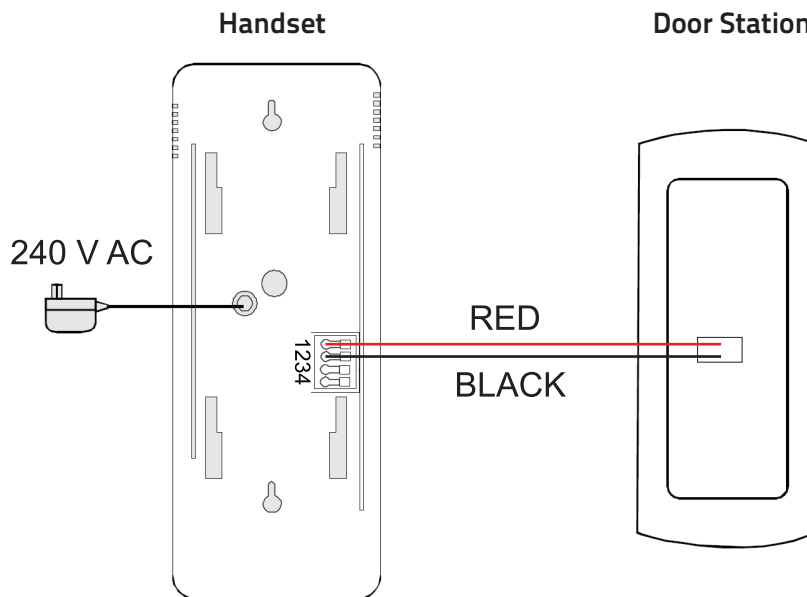




System Connections Example 1

100 metres
Total cable run should not exceed 100 metres between door station and handset

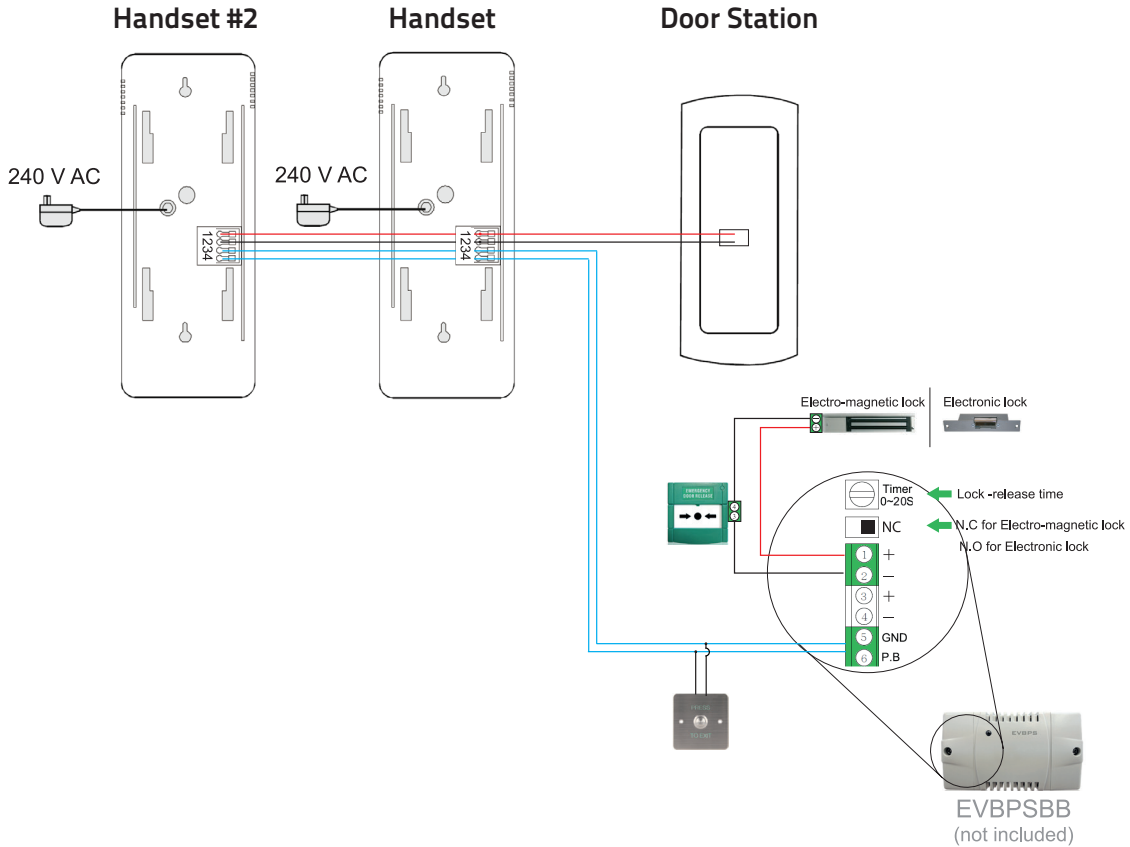
3 and 4
Terminals 3 and 4 are Normally Open, Volt-Free contact for lock release

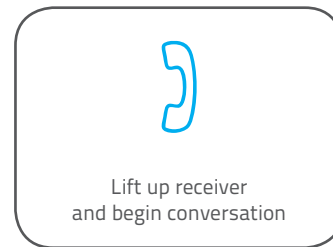
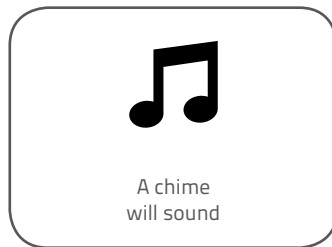


System Connections Example 2

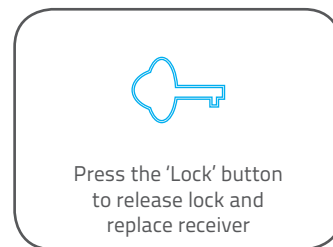
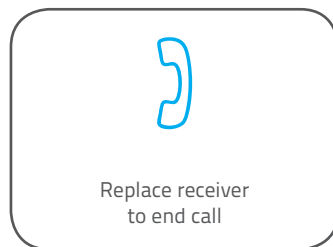
100 metres
 Total cable run should not exceed 100 meters between door station and handset

Maximum
 2 handsets to 1 door station is the maximum system configuration





Then choose between the 2 options;





Product Image





Elite Security Products
Unit 7, Target Park,
Shawbank Rd
Lakeside, Redditch B98 8YN
Telephone: 01527 51 51 50
Fax: 01527 51 51 43
Web: www.espuk.com
E&OE - Errors and omissions excepted.D16



www.espuk.com

