



RekorHD 24/7 Analogue HD Kits RCKBB, RCKBW, RCKTB, RCKTW

Quick Start Guide

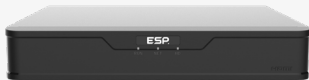
General Information

Read the instructions before commencing installation. The user is to retain the instructions for future reference.

- 4 x 2MP TVI Cameras included in kit
- 4 Channel Video Inputs
- XVR Supports up to 4k HDMI output
- 1-ch BNC Video Output
- 1-ch RCA Audio Output
- Ethernet required for mobile connection
- iOS & Android supported app
- Supports RekorHD 24/7 AHD Cameras
- XVRs supplied with 1TB Surveillance HDD
 - *Hard drives are supplied unformatted*
- XVRs support Ultra Motion Detection for reduced false alarms
- H.265 video format

Product Description

- RCKBB RekorHD 24/7 Analogue HD 2MP 4CH 4 Camera Bullet Kit Black 1TB
- RCKBW RekorHD 24/7 Analogue HD 2MP 4CH 4 Camera Bullet Kit White 1TB
- RCKTB RekorHD 24/7 Analogue HD 2MP 4CH 4 Camera Turret Kit Black 1TB
- RCKTW RekorHD 24/7 Analogue HD 2MP 4CH 4 Camera Turret Kit White 1TB



[https://www.espuke.com/
technical_support](https://www.espuke.com/technical_support)



The latest product manuals and software is available online:

Health & Safety

This unit must be installed by a suitably qualified person. Please ensure that all installations comply with the current IEE regulations. For reasons of space and clarity has been included and the diagrams have been simplified. The product is not user serviceable. Do not dismantle this product.

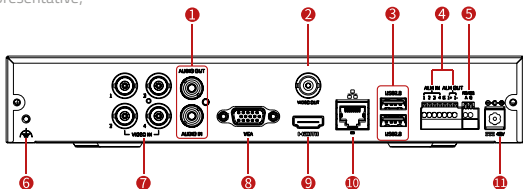
Due to our policy of continuous product improvement and development, the specifications in this guide may be subject to change without prior notice.

1. Indicators

Indicator	Description
RUN (Operation)	<ul style="list-style-type: none">Constantly on: NormalFlashing: XVR is starting up
NET (Network)	Constantly on: Connected to network
HD (Hard Disk)	<ul style="list-style-type: none">Constantly on: No HDD detected, or HDD is abnormalFlashing: Normal. HDD reading/writing data

2. Ports and Interfaces

The below is representative;



Interface	Description	Interface	Description
1.	Audio output/Audio input	2.	Video output
3.	USB	4.	Alarm in/Alarm out
5.	RS485	6.	Grounding
7.	Video input	8.	VGA output
9.	HDMI output	10.	Network
11.	DC input	12.	RS232

3. Connect Devices

1. Connect the XVR to a monitor with a VGA or HDMI cable (sold separately).
2. Connect a USB mouse to the XVR
3. Connect the camera(s) to the Video Interfaces (BNC male connectors) using a coaxial cable
4. If mobile app usage is desired, connect an ethernet cable from the router to the XVR

4. Startup

Verify installation and cable connections are correct, connect power to start the device

5. Web login

Default IP address 192.168.1.30	Note: For security, please set a strong password of at least characters including uppercase and lowercase letters, digits, and special characters. You are strongly recommended to regularly change the device password, and keep it secure to ensure that only authorised users can log in.
Default Username/Password admin/123456	

6. Add cameras

Please prepare the 'shotgun' cable, and connect the BNC connector to the camera & XVR, ensuring to also connect the DC connector to the camera & chosen power supply.

Numbers are marked by the BNC connector on the XVR, this represents the 'channel' on the XVR's Graphical User Interface (GUI).

7. Recording and playback

7.1 Recording

A 24/7 recording schedule is enabled by default. To set a recording schedule manually; right click and select 'Menu' > 'Storage' > 'Recording Schedule'; and then set the recording type and time based on your requirements.

7.2 Playback

On the live view page, right click one of the preview windows and select 'Playback' to play the recording on the current day.

Note:

- If you 'Event' type recording, you need to enable the corresponding alarm function, and configure the alarm triggered recording/snapshot
 - When the recording schedule is enabled, the XVR still records even when no analogue camera is connected
-

8. Access using a web browser

You can access the XVR using a web browser (IE Internet Explorer) from a connected computer.

1. Enter the XVR's IP Address in the address bar, then press 'Enter'.

Note:

Install the plugin when prompted. Close all web browsers when the installation starts.

2. Open the web browser and log in with the correct username and password.

9. Access from the Mobile App

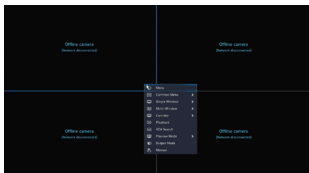
On your respective app store download the 'ESP IP PRO' app onto your mobile phone, and then once the app is installed sign up or log into a cloud account.

Note:

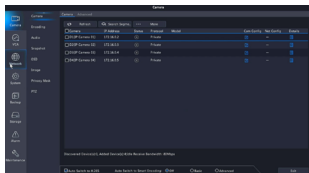
The username & password for the Cloud account on the mobile app is not your XVR's username & password.

The XVR's username & password is only entered when adding an XVR to the app's device list.

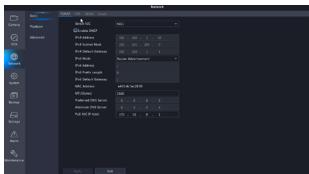
Ensure your XVR is connected to your router with an internet connection, and then connect your mobile phone to that same routers Wi-Fi network.



1. Right click on the screen and left click 'Menu'



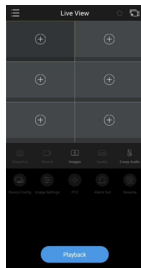
2. Left click on 'Network'



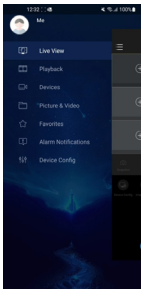
3. Left click 'P2P'



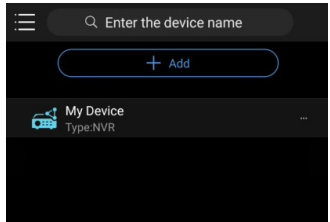
4. Download 'ESP IP Pro' App, and create an account or log into an existing cloud account.



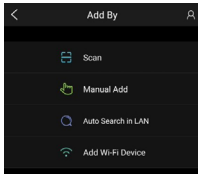
5. Open the App, and click on the '3 lines' in the top left corner.



6. Go to 'Devices'



7. Click 'Add'

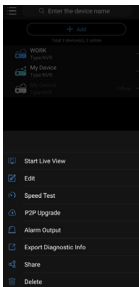


8. Select 'Scan'

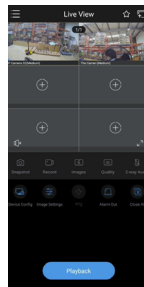


9. Scan the QR Code on the monitor from 'Step 3':

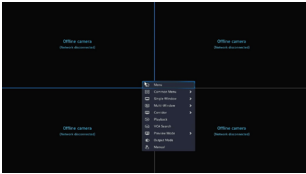
Note: change the images of the 'Live View' & 'Playback' to 'High' for the best results.



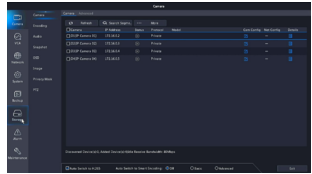
10. Select 'Start Live View'



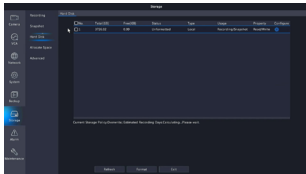
10. Formatting the Hard Drive



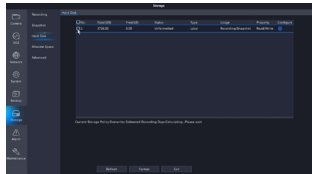
1. Right click on the screen and left click 'Menu'.



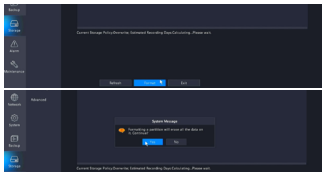
2. Left click on 'Storage'



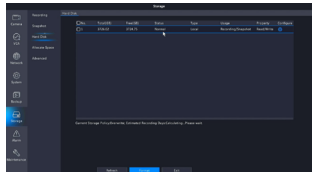
3. Left click on 'Hard Disk'



4. Left click on the tick box for number '1' to tick the box.

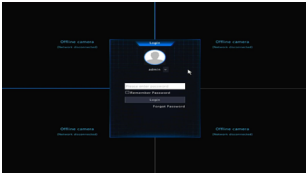


5. Click on 'Format' at the bottom of the screen, and then to complete the format press 'Yes' on the dialogue that appears. *Note: This will wipe all data from the HDD.*

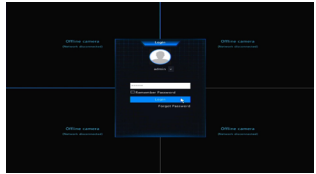


6. Check that under 'Status' the Hard Drive that has been formatted states 'Normal'

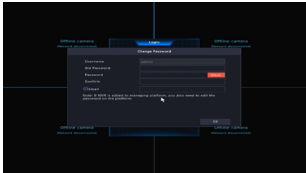
11. Password Creation



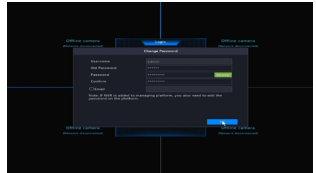
1. Power on the XVR



2. Enter the default system password '123456'.

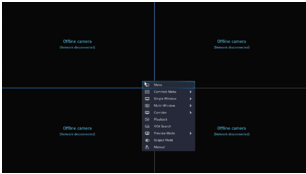


3. Left click on 'Login'

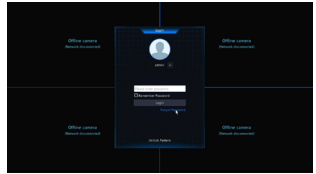


4. Create an Enhanced password, and click 'OK'

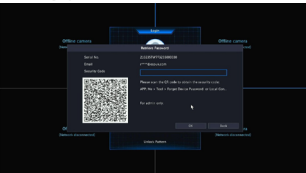
12. Password Reset



1. Right click on the screen and left click on 'Menu'

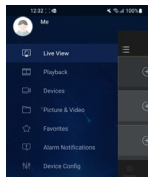
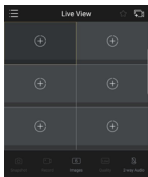


2. Click on 'Forgot Password'

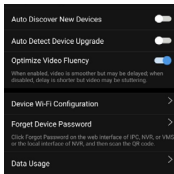
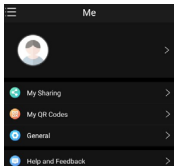


3. Download 'ESP IP Pro' app, and create an account or log into an existing cloud account.

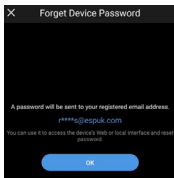




4. Open the App, and click on the '3 lines' in the top left corner.
5. Go to 'Me'



6. Select 'General'
7. Scroll down and select 'Forgot Device Password'



8. Using your camera, scan the QR code from 9. 'Step 3'. Once it has been scanned, it will ask you to send a password to your registered email address.
- Input the security code (from the email) into the XVR's 'Security Code', and click 'OK'. Finally set an 'Enhanced Password', and press 'OK'



E25

Unit 7 Target Park, Shawbank Road, Lakeside, Redditch, Worcestershire, B98 8YN
Tel: +44(0) 1527 51 51 50 Fax: +44(0) 1527 15 01 43 Email: sales@espuik.com

E&OE - Errors and Omissions Excluded. Instructions are subject to change without notice.