

IP Camera Quick Start Guide



The latest product manual and software is available online:
https://www.espuk.com/technical_support/



Connection

Typically the IP Camera (IPC) will either be connected to an NVR or connected directly to a network via a router.

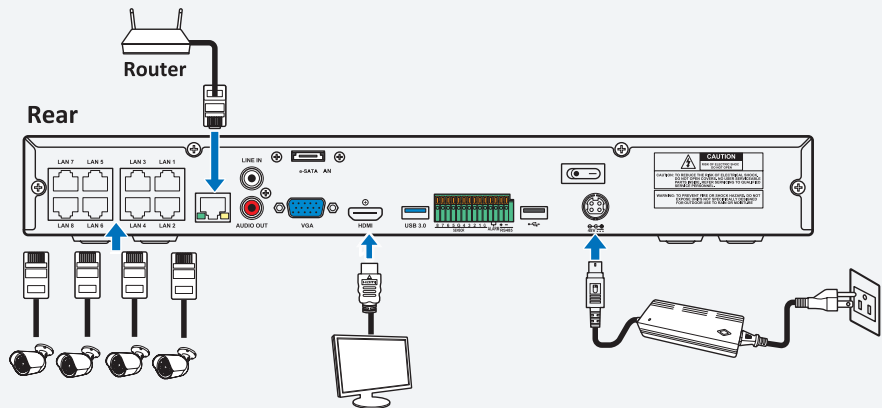
If the IPC is connected to an NVR, in most cases the NVR will auto connect. In this case no set-up will be required and the quick start guide can be retained for future use.

If the IPC is connected directly to a network there is a setup process required for access.

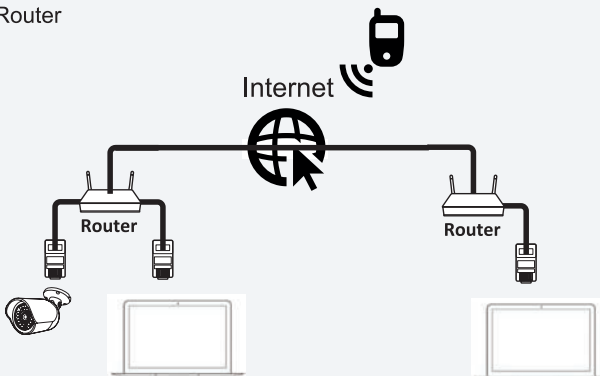
The quick start guide will assist, and the full manual will provide more support if required.

Example Connections

IPC with NVR



IPC with Router



Network Connection

After applying power and connecting the IPC to the network;

Load the 'Device Config Tool' software onto a PC/ Laptop on the network.

Launch the Device Search software, and select 'Search', if the network's existing details match the IPC's default details the device will be recognised.

The default IP address of the IPC is : 192.168.1.168

The default Subnet Mask of the IPC is : 255.255.255.0

Click on the IP address in the search bar to access the IPC.

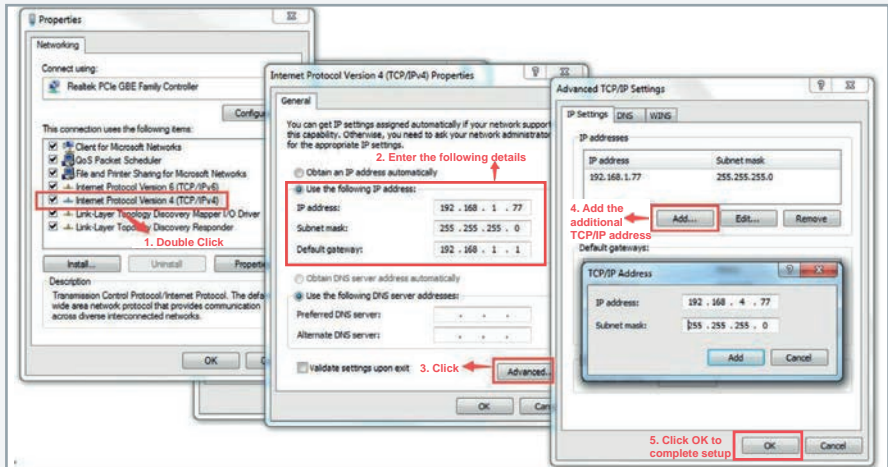


If the Device Search software cannot find the IPC, then a temporary connection between

PC/Laptop is required, this is achieved by matching the default network details of the IPC to the PC/Laptop.

Connect the IPC (with Power) to the LAN port to a laptop. Open 'Network Connections',

Select 'Local Area Connection', then 'Properties' to access the following menus;



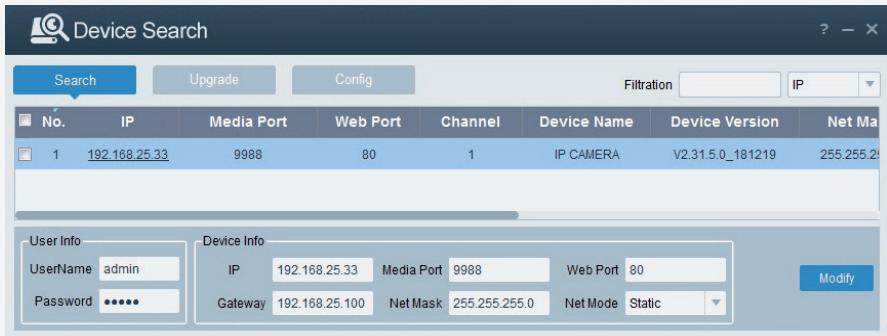
After the details have been applied and saved, launch the Device Search software and 'Search'.

If the the Device Search is unsuccessful, review the full installation manual for the product or contact the IT administrator for further support.

Tip; Other network connections on the PC/Laptop may need to be temporarily disabled to complete IPC setup.

Modify IPC Network Details

If required, the the IPC's network information can be modified via the Device Search to match the intended network segment details.



The screenshot shows the 'Device Search' application window. At the top, there are buttons for 'Search', 'Upgrade', and 'Config'. A 'Filtration' dropdown menu is set to 'IP'. Below this is a table with the following data:

No.	IP	Media Port	Web Port	Channel	Device Name	Device Version	Net Ma
1	192.168.25.33	9988	80	1	IP CAMERA	V2.31.5.0_181219	255.255.2

Below the table, there is a 'User Info' section with 'UserName' (admin) and 'Password' (masked). To the right is a 'Device Info' section with fields for 'IP' (192.168.25.33), 'Media Port' (9988), 'Web Port' (80), 'Gateway' (192.168.25.100), 'Net Mask' (255.255.255.0), and 'Net Mode' (Static). A 'Modify' button is located to the right of the Device Info fields.

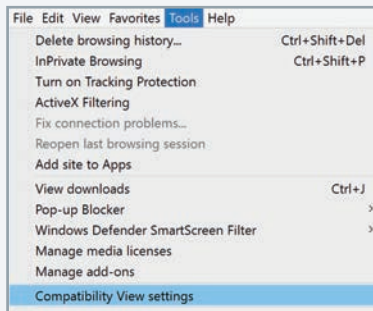
Internet Explorer Browser Access

Once the Device Search finds the IPC, the IP address link will open Internet Explorer.

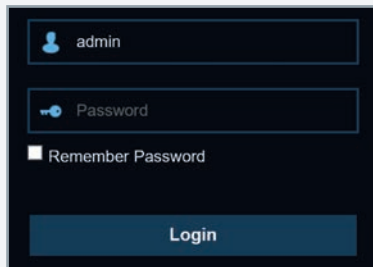
Run and Allow the latest plugin;

You haven't installed the plugin or it is not the latest version.
Please click [download](#) to download the latest plugin.
Please close browser before plugin installation!!!

In the browser add the IPC's IP address in the Compatibility View menu:

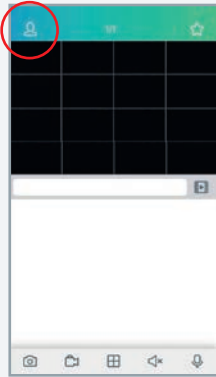



The default user name is admin, the default password is admin;

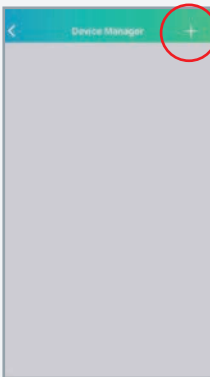
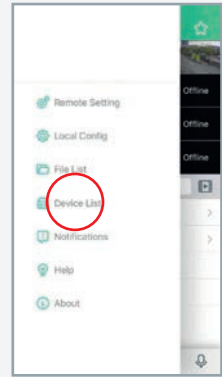


Mobile : APP Connectivity

1. Search ESP IP View from Google Play Store for android devices or App Store or iOS devices and install.



- 2. Run the app to display the live view
- 3. Touch the  icon to open the menu.
- 4. Select 'Device List'

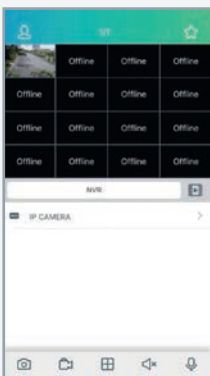
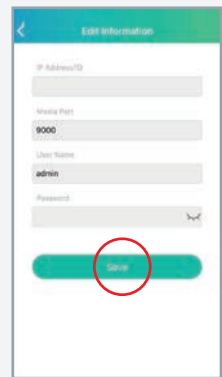


- 5. Select 'ADD' and scan the QR code located on the IPC.

QR Code



- 6. Enter the IPC's password and select 'Save'

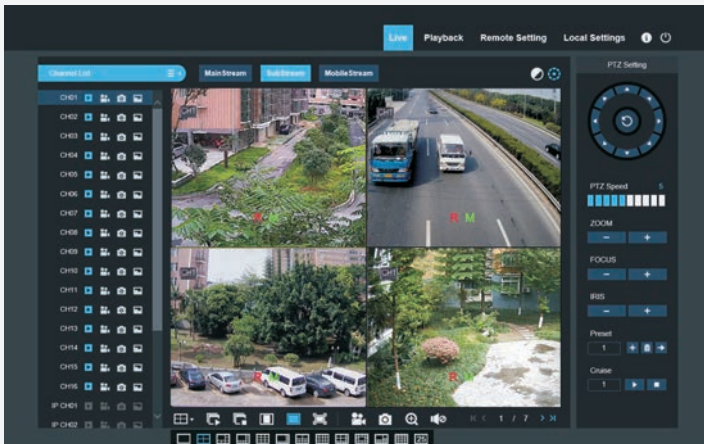


After all settings are completed the APP will turn to Live view display with camera images.

PC: Software Connectivity

The system can be accessed remotely via PC software.

To remotely access the NVR with the supplied software, please review the full product manual to insure PC settings and requirements are met.



Disclaimer

(i) As with all software and hardware dependent devices, ESP are unable to guarantee that every device will be compatible with the supplied product and software. Specific models of phone, tablet or other devices, the hardware it contains, the service provider, the types of data services offered and variations in version numbers can affect the performance.

(ii) IP enabled devices should always be installed by competent /experienced persons.



Elite Security Products

Unit 7, Target Park,
Shawbank Road, Lakeside,
Redditch B98 8YN



Telephone: 01527 51 51 50

Fax: 01527 51 51 43

Email: info@espuk.com

www.espuk.com

E&OE - Errors and omissions excepted.119