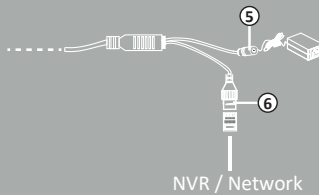
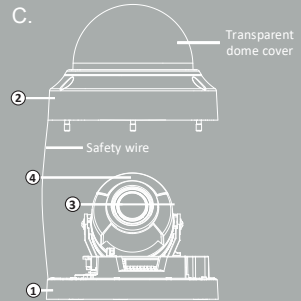
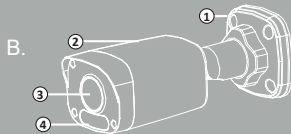
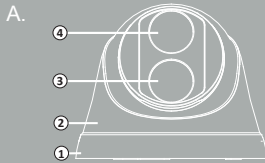



# Motorised IPC QSG

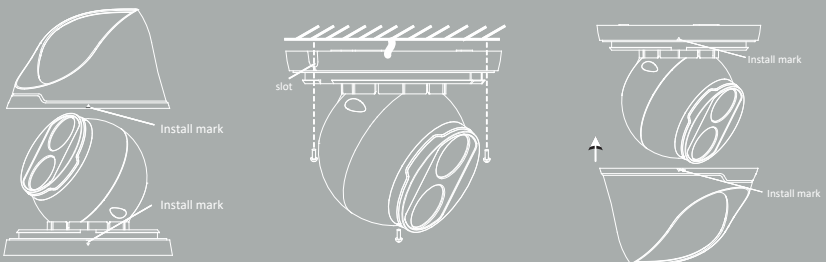


1. Base plate	2. Housing
3. Lens	4. Infrared LED/White LED
5. Power Interface (DC12V)	6. Ethernet interface



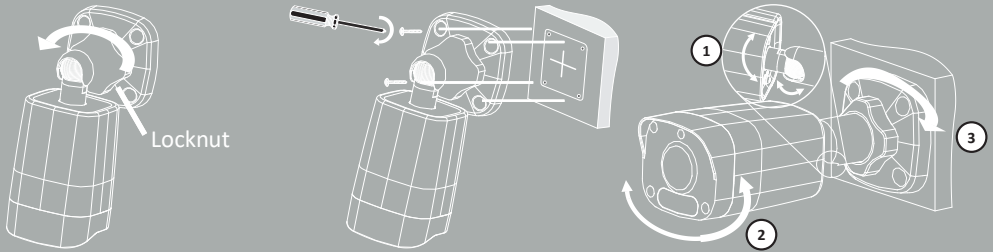
 Note: The connections are not to be exposed to moisture, therefore the connections are to be made internally or housed in a suitable ingress protected box.

A.



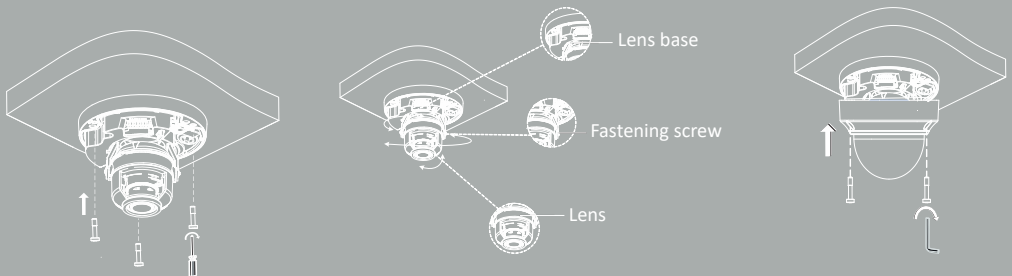
1. Untighten the housing grub screw if applicable
2. Align the install marks on base and housing
3. With camera and cable in position, mount the base securely
4. Align the install marks on base and housing, then rotate housing to secure
5. Tighten housing grub screw if applicable

B.



1. Untighten the locknut and arm screws
2. With camera and cable in position, mount the base securely
3. Adjust the camera angle and tighten locknut and arm screws to secure

C.



1. Connect all cables of the ceiling and your camera
2. Lead self-tapping screws through the guide holes in the camera base, and fix your camera on the ceiling by using a screwdriver
3. Rotate the lens base horizontally
4. Loosen the fastening screws and rotate the lens vertically
5. Rotate the lens horizontally
6. Align the screw holes in the base and tighten the three torx screws on the edge of the transparent dome cover to fix it.

The latest product manuals and software is available online:



#### Health & Safety

This unit must be installed by a suitable qualified person. Please ensure that all installations comply with the current IEE regulations.

For reasons of space and clarity not every system has been included and the diagrams have been simplified. The product is not user servicable. Do not dismantle this product.

Due to our policy of continuous product improvement and development, the specifications in this guide may be subject to change without prior notice.

[https://www.espuke.com/technical\\_support/](https://www.espuke.com/technical_support/)

**ESP**

● ● ● ● ● ScolmoreGROUP

Elite Security Products UK, Unit 7 Target Park, Shawbank Road, Lakeside, Redditch, Worcestershire, B98 8YN  
Tel: +44(0) 1527 51 51 50 Fax: +44(0) 1527 15 01 43 Email: [info@espuke.com](mailto:info@espuke.com)  
Registered in England, Company Registration Number: 02769392, VAT Registration: GB614686525

For more product information please visit [www.espuke.com](http://www.espuke.com)  
E&OE - Errors and Omissions Excepted. J23

