

16CH DVR

Quick Start Guide



1. Packing.....	P.2
2. Hard Disk Installation.....	P.3
3. DVD-RW Installation.....	P.4
4. Front Panel Controls.....	P.5
5. Rear Panel Connectors.....	P.7

1

PACKING

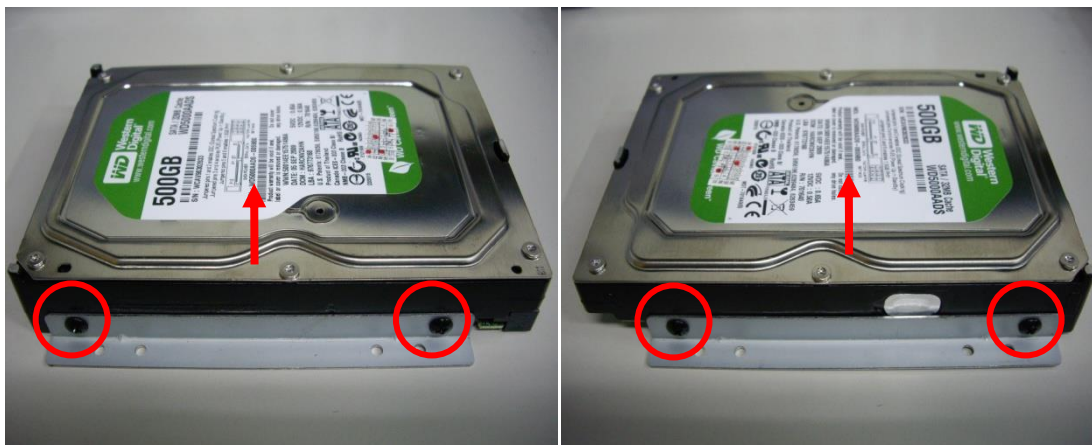
1. DVR
2. Quick Start
3. IR Remote Control *Pressed "DVR1" Button before use
4. Battery
5. CD
6. Hard Disk Mount
7. Screws
8. IDE to SATA Power Cord
9. Power Cord
10. SATA Cord

Note: Standard shipping products do not include HDD

2

HARD DISK INSTALATION

Step 1) Fix the HDD to rack mount with the screws as indicated.



Step 2) Place the HDD on the HDD plate and screw it as indicated.



Step 3) Connect the power and the SATA cables as indicated.



Note: After installation, please initialize Hard Disk before starting to record. For more detailed information, please check out User Manual 4-9 System Tools for reference.

3

DVD-RW INSTALATION

DVD-RW Installation

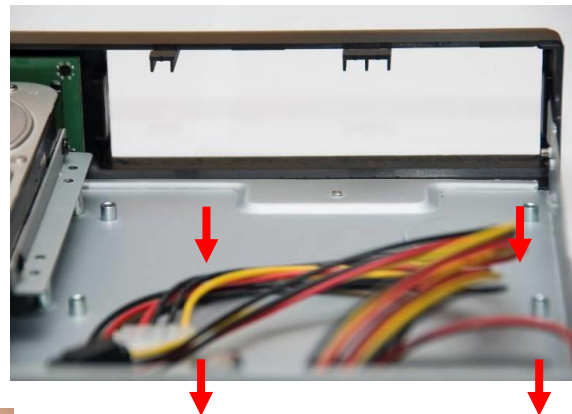
(Standard shipping products do not include HDD and DVD-RW)

Step 1:

Remove the front cover from DVR.

Step 3:

Put DVR bottom up, screw to fix the DVD-RW as indicated.

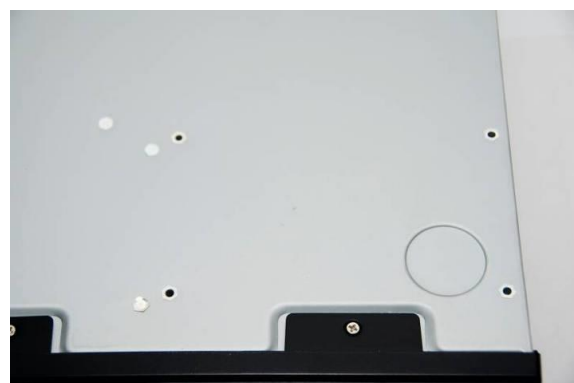


Step 2:

Put the DVD-RW into the unit as indicated.

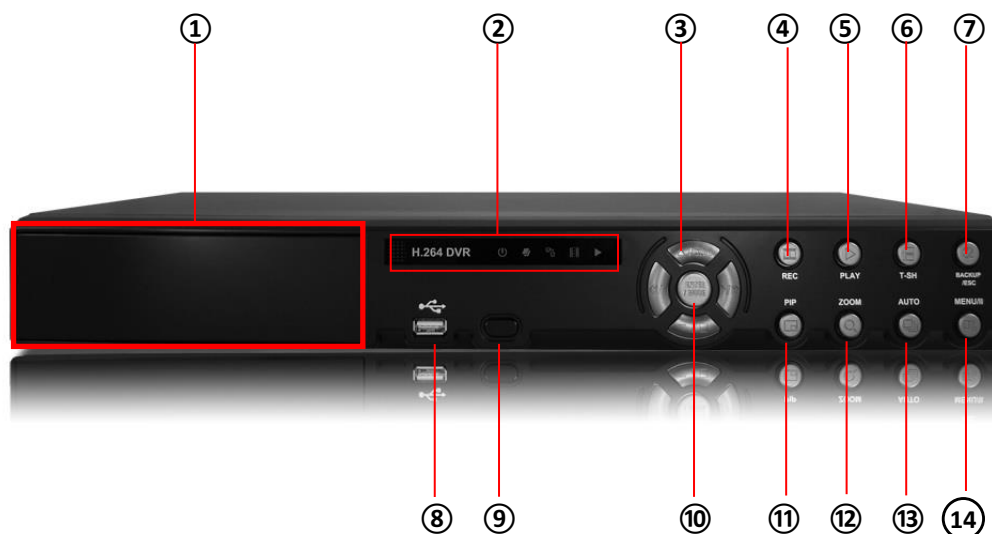
Step 4:

Connect the power and the flat cables as indicated.



4

FRONT PANEL CONTROLS

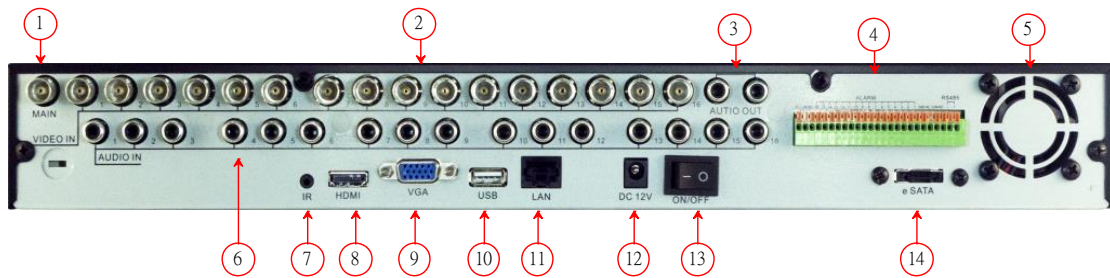


Control Keys	Description
1. DVD Writer	Optional DVD-RW backup device.
2. LED Display (From left to right)	<p>Power: Power is on.</p> <p>HDD: Hard disk is in use.</p> <p>LAN: Connected to the internet (in red): Remote user logged in.</p> <p>REC: Recording.</p> <p>PLAY: Playing back.</p>
3. ▼ / ■	In SETUP mode, press to move cursor down. In PLAYBACK mode, press to stop playing back.
▲ / SLOW	In SETUP mode, press to move cursor up. In PLAYBACK mode, press to slow down.
▶ /▶▶	In SETUP mode, press to increase value. In PLAYBACK mode press to play forwards.
◀ /◀◀	In SETUP mode, press to reduce value. In PLAYBACK mode, press to play rewind.
4. REC	Start or stop recording.
5. PLAY	Play back in normal speed.
6. T-SH	Display the search menu.
7. BACKUP/ESC	In LIVE mode, press to display the BACKUP menu. In SETUP mode, press to return to previous page.
8. USB 2.0 Port	Port for USB external devices (USB flash drive devices use, the mouse behind the back of the USB ports installed)..
9. IR Sensor	Input sensor for the remote control.

10. ENTER / MODE	In SETUP mode, press to enter values. In PLAYBACK mode, switch between full, quad, 9-channel, 16-channel display in order.
11. PIP	In LIVE mode, display with picture in picture format.
12. ZOOM	In LIVE or PLAYBACK mode, enlarge the display of a channel.
13. AUTO	Auto Sequence display.
14. MENU / II	In LIVE mode, press to display menu. In PLAYBACK mode, press to pause playback.

5

REAR PANEL CONNECTORS



1. MAIN monitor	BNC port for the main monitor. You can switch to SPOT Monitor by GUI setting.
2. VIDEO IN	BNC input ports for cameras, 16 in total.
3. AUDIO OUT	RCA output port for audio signal.
4. EXTERNAL I/O	EXTERNAL I/O port.
5. Fan	DC 12V 40mm X 40mm fan.
6. AUDIO IN	RCA input port for audio signal. 4 ports available for 4CH/8CH. 16 ports available for 16CH.
7. IR JACK	IR extension cable jack.
8. HDMI	HDMI port.
9. VGA	VGA port.
10. USB 2.0 port	USB port. (Device USB Mouse).
11. LAN	Network port.
12. DC 12V	Socket for a DC 12V input.
13. ON/OFF	Power Switch.
14. e-SATA	External SATA hard disks port for expanding recording space.

EXTERNAL I/O

