

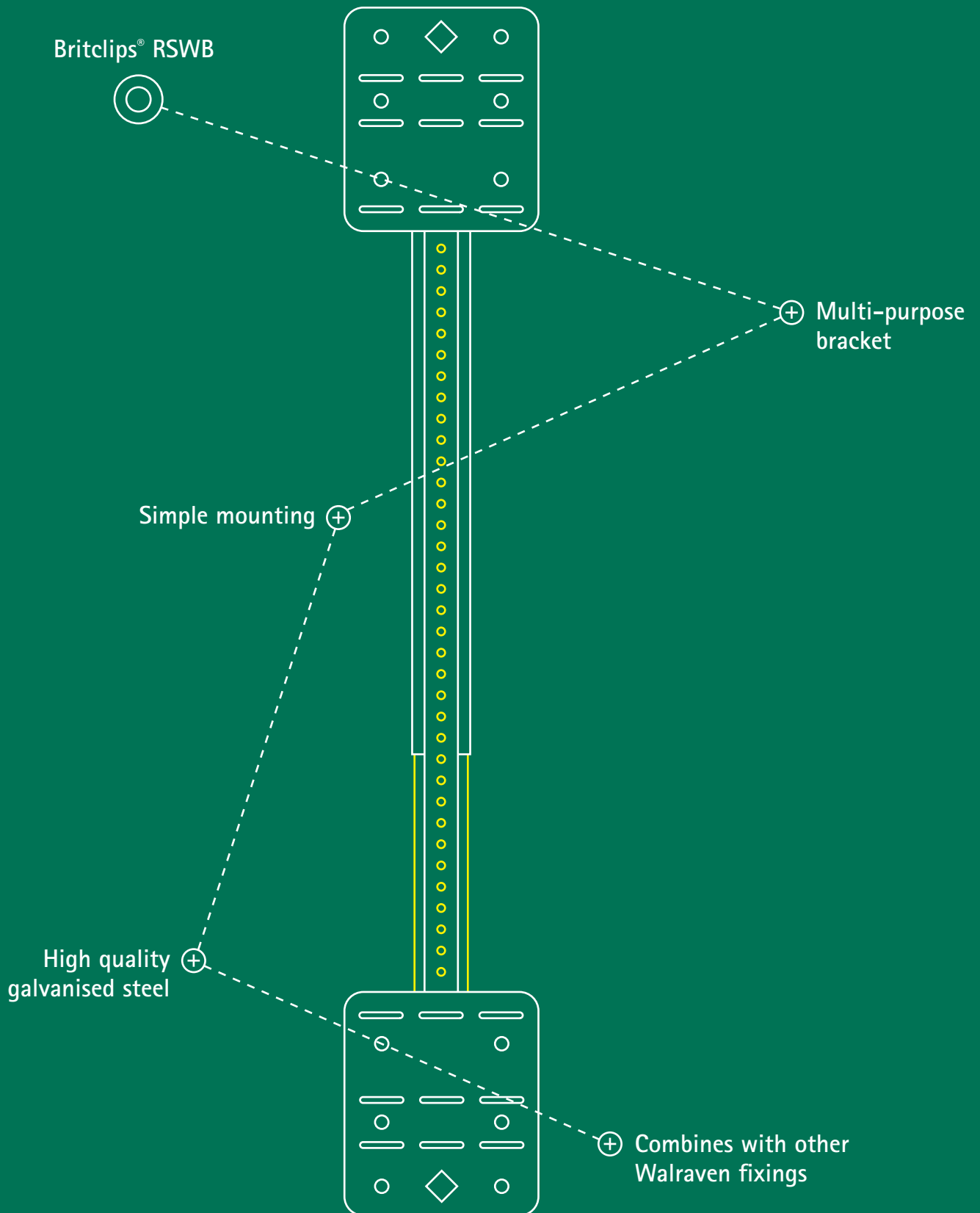
Time-saving bracket for electrical
and plumbing applications



Britclips[®] RSWB

Rapid Sliding Wall Bracket





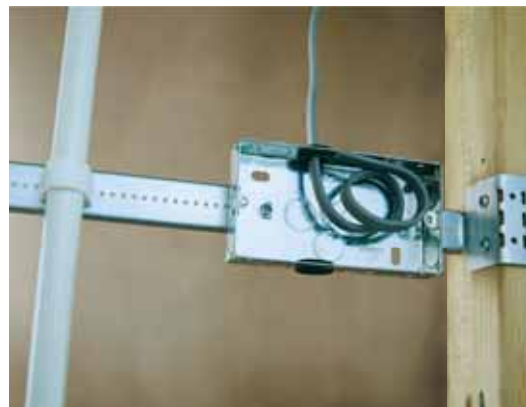
Inspired by smart solutions from the start

Walraven is a globally active company in the installation industry, founded in 1942. We have always been dedicated to make the work of our customers easier and more effective. With simple and smart solutions, comprehensive services and excellent support.

Walraven. The value of smart

For faster mounting of electrical boxes and conduit

The RSWB has become hugely popular with electricians for fixing electrical boxes and conduit within stud walls. The bracket allows maximum flexibility for positioning and provides a strong, easy to install surface onto which the services can be fixed. Gone are the days of finding and cutting pieces of timber, these brackets are ready to use straight from the box saving valuable time!



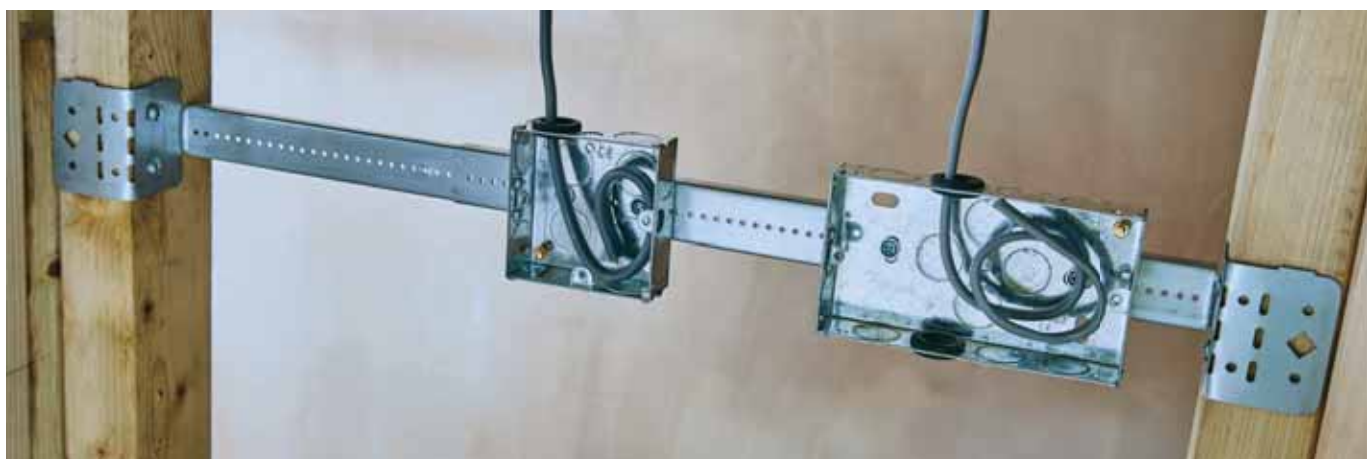
Electricians who have used the RSWB told us:

"The Walraven RSWB has quickly become an essential part of our first fix process"

"These are a time saver in every way!"

"So easy to use and versatile"

"A revelation!"



Request a free sample

To request a free sample of the RSWB go to www.walraven.com/en/rswb
For any other enquiries about this product call 01295 753400

Pipe fixing has never been easier with the RSWB

Plumbing and heating engineers have recently discovered the benefits of using the RSWB. The 10-16" bracket is perfect for floor joists and non-standard stud spacing. Simply screw the pipe clips straight in. Used with our self-closing starQuick® clips, pipe fixing can be even faster! Take a look at our Instagram page, walraven_uk, to see examples of how plumbers are using the RSWB.



Plumbers who have used the RSWB told us:

"This is so handy for using in floor joists for running pipes through under floors"

"You won't regret getting these. I ordered 20, then after using one I ordered a whole box for the van!"

"So much more convenient and better looking too"

"These are a game changer!"



Fix with starQuick®

The fastest way to secure your pipework to the RSWB is with the starQuick® self-closing clamp. Simply push the pipe into it and the clip will lock around the pipe. Press down again to easily unlock if required. Find out more at walraven.com/en/starquick

RSWB

The RSWB is the perfect alternative to using wooden noggins for mounting electrical boxes, conduit and pipework in stud walls and floor joists.

Features and benefits of the Britclips® RSWB

- Extendable bracket for faster mounting of electrical boxes, conduit and pipework
- Can be fixed to wood or metal joists
- Shorter version expands from 10-16" (25-40cm)
- Longer version expands from 16-24" (40-60cm)
- Quicker and easier to install than traditional methods
- Can be set at multiple depths
- A lightweight product made from high quality galvanised steel



■ Two sizes now available

Install in 3 easy steps



1. Supplied in connected pairs, simply snap the brackets apart.



2. Slide the brackets together to the required length.



3. Bend the fixing plates along the markers, if required, for multiple depth settings.

Part No.	Length	Pack quantity
59491016	10-16" (25-40cm)	50
59491624	16-24" (40-60cm)	50

We are proud to manufacture the RSWB right here in the UK!



Find out how we can support you

Would you like to find out more about any of the solutions described in this brochure?
Or would you like to discuss how we could help you find the best possible solution for your project? Get in touch today!

United Kingdom Ireland

Walraven Ltd.

18 Wildmere Industrial Estate
Banbury (GB)
Oxon, OX16 3JU
Tel. +44 (0)1295 75 34 00
sales.uk@walraven.com

Other countries

Walraven International

Industrieweg 5
3641 RK Mijdrecht (NL)
Tel. +31 297 23 30 00
Fax +31 297 23 30 99
export@walraven.com

Walraven Group

Mijdrecht (NL) · Tienen (BE) · Bayreuth (DE) · Banbury (GB) · Malmö (SE) · Grenoble (FR) · Barcelona (ES) · Kraków (PL)
Mladá Boleslav (CZ) · Moscow (RU) · Kyiv (UA) · Detroit (US) · Shanghai (CN) · Dubai (AE) · Budapest (HU)

