

KWHM3P100 KWH METER

REV:082025


100A Three Phase kWh Meter (MID certified)

Three phase MID certified energy meter suitable for commercial, industrial and domestic three phase applications up to 100A direct connected.

Four modules, din rail mounting, compact design with easy to read backlit LCD display and pulse output.

Access to terminals can be wire sealed to prevent tampering.



	Part Number	KWHM3P100
	Barcode	5060523525584
	Maximum rated current (Imax)	100A
	Nominal Voltage(Un)	3x230/400V/50Hz
	IP RATING TERMINALS	IP20 EN 60259
	MOUNTING	35mm top hat din rail
	Torque (L1,L2,L3,N terminals)	1.2Nm
	Maximum cable	35mm²
	Complies with	EN 50470-3

Description:

Description

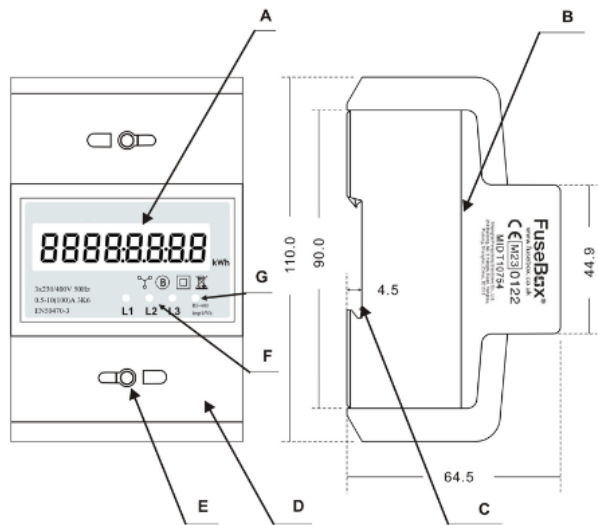
- A Front panel
- B Cover
- C Mounting (Base)
- D Protection cover
- E Security hasp
- F Consumption indicator (L1,L2,L3)
- G Pulse output

Dimensions

Height 110mm  
Width 70mm  
Depth 64.5mm  
Weight 0.4Kg

Mounting

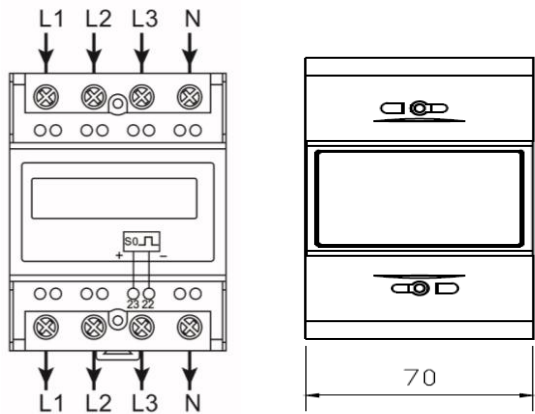
DIN Rail 35mm



Connections:

- L1 L1 phase wire
- L2 L2 phase wire
- L3 L3 phase wire
- N Neutral wire
- 22 and 23 Pulse output contact

22 and 23  
Connect 5-27V DC to connector 20 (anode), and the signal wire (S) to connector 21 (cathode).



**KWHM3P100** KWH METER**TECHNICAL**

Specifications			
Voltage (V)	Voltage AC (Un)	3*230/400V	
	Voltage range	3*161/279V to 300/500V	
Current (A)	Base (Ib)	5/10A	
	Max (Imax)	80/100A	
	Starting current (mA)	0.4% of Ib	
	Imin	0.25A for 5(80)A and 0.5A for 10(100)A	
Power consumption of current	≤2W /10VA per phase		
Frequency(Hz)	50(±10%)		
Accuracy	Class B		
Standards	EN50470-3		
Memory back-up	EEPROM		
Temperature range(°C)	Operating	-25°C to +55°C	
	Storage	-30°C to +70°C	
Humidity	Operating	75%	
	Storage	95%	
Protection against penetration of dust and water	IP51		
Insulating encased meter of protective class	II		
Voltage withstand	AC voltage withstand	2KV for 1 minute	
	Impulse voltage withstand	6KV-1.2uS waveform	
Current withstand	30Imax for 0.01s		
Pulse output rate	400/1000imp/kWh		
Data storage	20+ years		
Basic errors:	0.05Ib	Cosφ = 1	±1.5%
	0.1Ib	Cosφ = 0.5L	±1.5%
		Cosφ = 0.8C	±1.5%
	0.1Ib - Imax	Cosφ = 1	±1.0%
	0.2Ib - Imax	Cosφ = 0.5L	±1.0%
		Cosφ = 0.8C	±1.0%

**Device must be installed by a qualified electrician in accordance with the current IET Wiring Regulations BS7671.**

**Environment**

WASTE ELECTRICAL PRODUCTS SHOULD NOT BE DISPOSED OF IN HOUSEHOLD WASTE.  
CONTACT YOUR RETAILER OR LOCAL AUTHORITY FOR RECYCLING INFORMATION.



After installation and testing of this product it is essential that the INSTRUCTION LEAFLET is available for reference.