

Heatec® Radiators Limited

Solutionz House, Third Avenue
Team Valley Trading Estate
Gateshead
Tyne & Wear
NE11 0PR

FORTE ELECTRIC RADIATOR

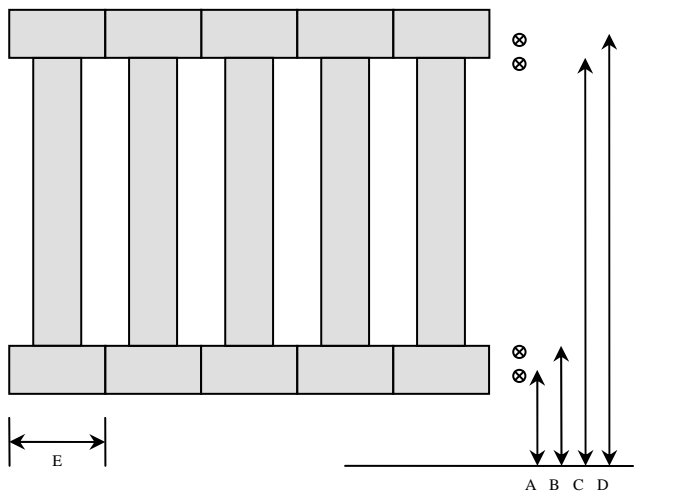
Tel: 0191 487 8103
Fax: 0191 482 0270
www.heatec-rads.com

Forte electric radiators are supplied in three heights, (390mm, 540mm and 640mm), as assembled aluminium sections. Adjustable brackets secure the radiator to the wall between the top and bottom common rails. These brackets are located horizontally between the sections.

The radiator is secured and aligned by the brackets on the top and bottom rails. The installation is tightened by the 4 adjusting screws pulling against each other, (see Step 1)

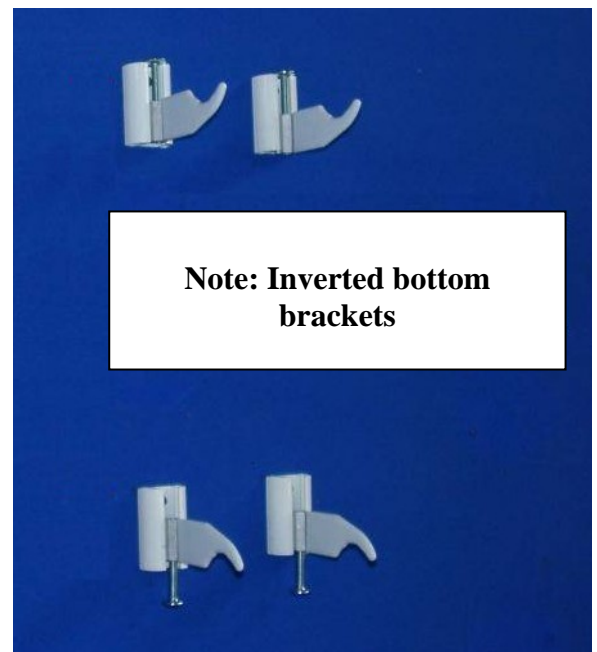
To Position The Radiator

Typically, the bottom of the radiators should be a minimum of 100mm from the floor, with the fixing brackets centred on the first gap in from either end. Mark the wall for bracket fixing positions as per the table below



Height	A	B	C	D	E
390mm	130mm	160mm	430mm	460mm	90mm
540mm	130mm	160mm	580mm	610mm	90mm
640mm	130mm	160mm	680mm	710mm	90mm

Assumes 100mm from floor to underside of radiator



Step 1

IT IS ESSENTIAL THAT THESE BRACKETS ARE CORRECTLY LOCATED AS THEY CONTROL THE POSITION AND SECURITY OF THE RADIATOR.

Secure The Radiator

Hang the radiator on the top location brackets and turn the top and bottom adjusting screws to level and lock the radiator into position.



Step 2

Step 3

There are Three Options of Radiator Control

- **Adjustable Thermostat (Type RC 12)** (NOT FOR USE IN BATHROOMS)
Range : Frost protection to 28 degrees, approx.
- **Basic Control (Type RC 11)**
Suitable for Bathrooms and use with external controls, i.e. Time Switch and / or Room Stat. Output temperature may be fixed during manufacture, to customers specification thereby offering added safety and low surface temperature (LST) protection.
- **IP56 Rated Control (Type RC10M)**
Suitable for Commercial and Industrial environments, offering greater ingress protection than RC11 / RC12. May be used in conjunction with external controls, i.e. Time Switch and/ or Room Stat. Output temperature may be fixed during manufacture, to customers specification thereby offering added safety and low surface temperature (LST) protection.

Electrical Connection: All Radiators MUST be earthed. (Do not overload your circuit).

Calculate the loading for the radiator (1kW = 4.30 amps)

In line with IEE Regulations, Heatec Radiators should be wired through a double pole switched fused spur providing a 3mm isolation gap.

Cable connections: Brown : Live Blue : Neutral Yellow & Green : Earth

ISOLATE BEFORE CONNECTING. IF IN DOUBT, CONSULT A QUALIFIED ELECTRICIAN.

Operation:

Heatec Electric Radiators are all factory tested prior to despatch therefore, no further commissioning or maintenance is required.