

CLEANING:

- Always remove the plug from the electrical socket and allow the heater to cool down before cleaning the heater.
- Wipe heater with a soft dry cloth.
- Wind the cable around the cable tidy and store the heater in a clean dry place.
- Do not try to repair the heater yourself, always consult a suitably qualified engineer.

WARNING:

Do not immerse the heater in water.

Do not use any cleaning chemicals such as detergents and abrasives.

Do not allow the interior to get wet.

EVENTUALLY, YOU MAY WANT TO REPLACE THIS HEATER:

New regulations require the recycling of Waste from Electrical and Electronic Equipment (European "WEEE Directive" effective August 2005—UK WEEE Regulations effective 2nd January 2007). Environment Agency Registered Producer: WEE/GA0248QZ.

When your heater comes to the end of its life or you choose to replace it, do not dispose of it with your normal household waste. Please recycle where facilities exist. Check with your supplier or local authority for suitable options.



IF YOU EXPERIENCE PROBLEMS:

If your heater is defective or develops a fault, please return it to the place where you bought it. You can call our helpline for advice. The helpline will gladly give advice on any aspect of any Eterna heating product.

SPECIFICATION:

VOLTAGE: 220 – 240V – 50Hz
POWER MAX: 2kW

110418-BT



SAFETY AND INSTALLATION INSTRUCTIONS



Pack contents:

Oil filled heater with timer c/w 13A. fused, 3 pin plug fitted	Qty. 1
Heater wheel clamping plates	Qty. 2
Castor wheels	Qty. 4
Dome nuts	Qty. 4
U clamping bolts	Qty. 2
U clamp securing wing nuts	Qty. 4

Model:
OH211T

2kW 11 Fin Oil Filled Heater With Timer

These instructions are provided as a guideline to assist you.

**PLEASE READ THESE INSTRUCTIONS BEFORE USING YOUR HEATER
PLEASE RETAIN FOR FUTURE REFERENCE**

General Information and Safety Instructions:

READ THIS FIRST:

Check the pack and make sure you have all of the parts listed on the front of this booklet. If not, contact the supplier where you bought this product.

IMPORTANT SAFEGUARDS:

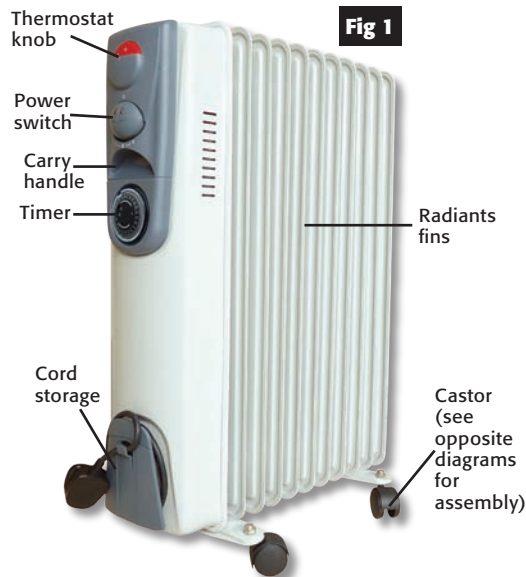
When using an electrical appliance, basic safety precautions should always be observed, including the following:

- This appliance is not intended for use by persons (including children) with reduced physical, sensory or mental capabilities, or lack of experience and knowledge, unless they have been given supervision or instruction concerning use of the appliance by a person responsible for their safety.
- Extreme caution is necessary where children or persons with reduced physical, sensory or mental capabilities may come into contact with the heater when in use.
- This heater is hot when in use. To avoid burns and personal injury, do not let bare skin touch hot surfaces. Never leave the heater unattended whilst it is in use.
- The product is for household/office use only.
- In order to avoid overheating when in use, do not cover the heater or position where it may come in contact with flammable materials, such as curtains, drapes etc. to avoid the risk of fire.
- This heater is filled with a precise quantity of special oil. In case of leakage or repair which requires opening of the oil container this should only be carried out by the manufacturer or qualified engineer.
- The heater must not be located adjacent to or against an electrical socket.
- Do not run the cord under carpets/rugs.
- Arrange the cord away from high traffic areas and where it will not present a trip hazard.
- Do not operate the heater with a damaged cord/plug or if the heater malfunctions.
- If the supply cord is damaged, it must be replaced by qualified engineer.
- Avoid the use of an extension cord as this may overheat and cause a risk of fire.
- Use the heater in a well ventilated area.
- Do not use the heater in any areas where petrol, paint or other flammable liquids are stored e.g. garages or workshops.
- Do not use this heater in the immediate surroundings of a bath, shower, swimming pool or where water is present.

WARNING:

Only operate the heater in an upright position with the feet attached, any other position could cause malfunction.

FEATURES:

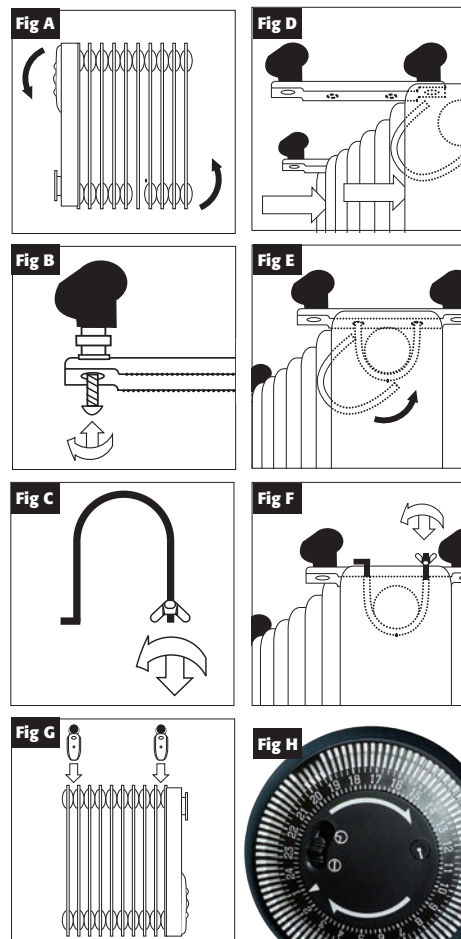


ASSEMBLY INSTRUCTIONS:

YOU MUST ATTACH THE FEET BEFORE OPERATING THE HEATER.

1. Place the radiator upside-down on a scratch-free location, making sure it is stable and will not fall. (fig. A).
2. To attach the castors to the mounting plate, unscrew domed nut and feed through the holes in each end of the mounting plate. Screw domed nut back in place (fig. B) ensuring that they are fully tightened.
3. Unscrew wing nut from the U-shaped bolt (fig. C). Hook U-shaped bolt onto the radiator between the first two fins (see fig. D and G).
4. Feed castor mounting plate on to the U-shaped bolt. (fig. D and fig. E).
5. Screw wing nut on to ends of U-shaped bolt and fasten securely (fig. F). Over tightening may cause damage to the radiator.
6. Now fasten second castor mounting plate between last two fins (fig. G) and by repeating the above steps.

Installation and Instructions:



INSTRUCTIONS FOR USE:

NOTE: When the heater is turned on for the first time or after having not been used for a long period, it may smell for a short while.

1. Position the heater on a flat and stable surface.
2. Set all controls to OFF and insert the plug into an electrical socket.
3. Rotate the thermostat knob clockwise to MAX position and switch the heater on as follows:
 - I = Low heat (800W)
 - II = Medium heat (1.2kW)
 - I + II = High heat (2kW)
4. When your room reaches the desired temperature, slowly rotate the thermostat knob counter clockwise until the red indicator light goes out. The thermostat can now be left at this setting. As soon as the room temperature has dropped below the set temperature, the unit will switch itself on automatically until the set temperature has been reached again. In this way the room temperature remains constant with the most economical use of electricity.
5. To change the room temperature setting, rotate the thermostat knob clockwise to raise the temperature, or anti-clockwise to lower it.
6. This heater includes an overheat protection system that shuts off the heater when parts of the heater get excessively hot.
7. This unit is fitted with anti-tip cut-out protection. Should the unit not be in the correct vertical position, the heater will shut off.
8. To completely shut the heater off, set all the controls to OFF, and remove plug from the electrical socket.

TIMER INSTRUCTIONS:

1. Regulate the timer according to the clock by turning it clockwise (DO NOT TURN IT ANTI-CLOCKWISE). (See Fig. H).
2. The timer has a small switch with functions as below:
 - I = Unit is always on
 - ⊖ = Timer function is on
3. Set the timer to ⊖ position there are 96 small plastic pins on the timer each correspond to 15 minutes intervals. Push out the pins corresponding to the time you want the heater to turn ON and push in the pins corresponding to the time you want the heater to turn OFF.

CAUTION:

- A. Heater should always be supervised when in use.
- B. The heater will not operate if timer is set to the ⊖ position and the pins are not activated according to the times required.
- C. If the heater loses its electricity supply, e.g. switched off at the mains socket or in the event of a power failure, the time should be reset after the power is re-established.
- D. The red LED light will be illuminated when the timer is set to ON position or the timing function is activated.