

Automatic Infrared Tap

TAPIFR

PLEASE READ THESE INSTRUCTIONS BEFORE COMMENCING INSTALLATION. UPON COMPLETION OF INSTALLATION ENSURE THE INSTRUCTIONS ARE LEFT WITH THE USER/MAINTAINER OF THE PRODUCT.

Automatic Infrared Tap

I. INTRODUCTION

Thank you for purchasing the Hyco Infrared TAPIFR. The automatic Infrared tap can be connected to mains power supply or can be battery operated. Ideal for use with the Hyco Rho and Aquila Instantaneous water heaters, the tap is supplied with a standard aerator. If the tap is to be used with an instantaneous water heater there is also a choice of 3 tap spray nozzles - 2.0, 2.5 or 3.0 litres/min.

2. IMPORTANT SAFETY POINTS



INSTALLATION SHOULD BE CARRIED OUT BY A SUITABLY QUALIFIED PERSON.



IF THE TAP IS TO BE CONNECTED TO MAINS POWER SUPPLY THEN INSTALLATION SHOULD BE CARRIED OUT IN ACCORDANCE WITH THE LATEST EDITION OF THE IEE WIRING REGULATIONS.



ENSURE MAINS WATER SUPPLY FEEDS ARE ISOLATED BEFORE REMOVING ANY EXISTING TAP AND YOU BEGIN THE INFRARED TAP INSTALLATION PROCESS.



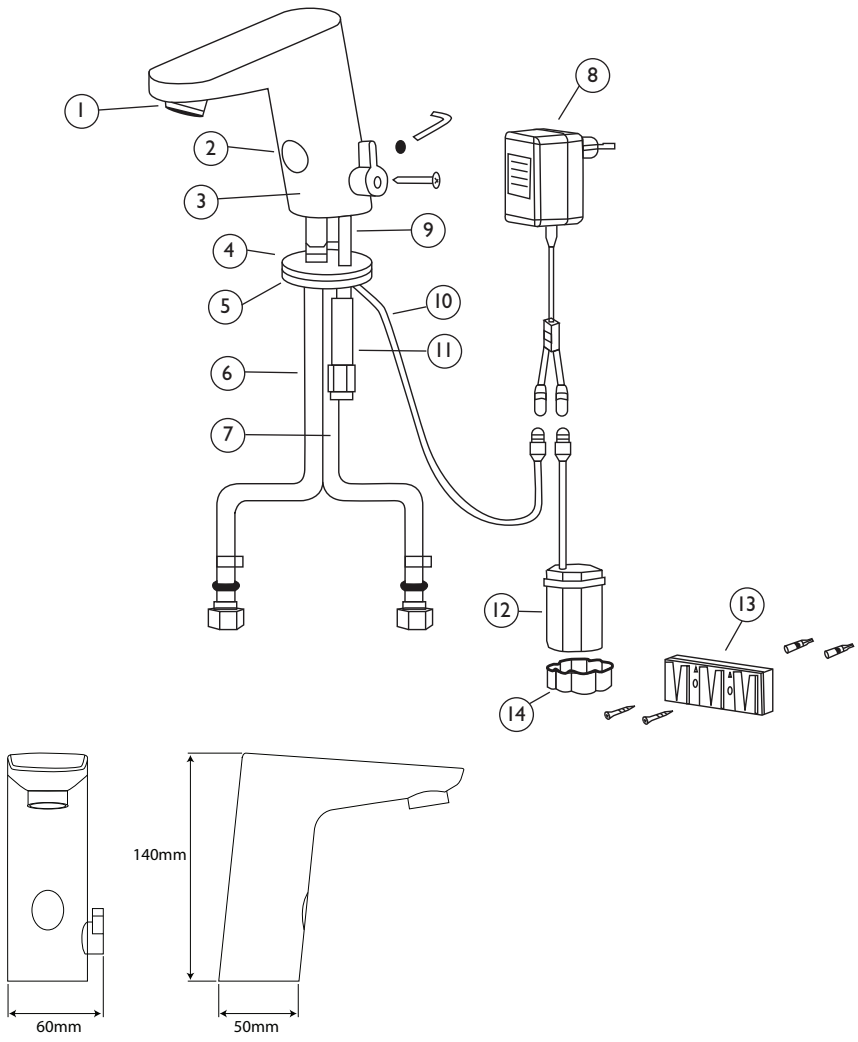
ENSURE THAT THE WATER PRESSURE IS WITHIN THE REQUIRED RANGE AS STATED IN THE TECHNICAL SPECIFICATION SECTION.



DO NOT INSTALL TOO CLOSE TO REFLECTIVE SURFACES AS THE INFRARED SENSOR MAY BE AFFECTED.

Parts list

1	Aerator	8	Transformer
2	Sensor	9	Fixing screw
3	Tap main body	10	Power Cable
4	Rubber washer	11	Fixing nut
5	Brass washer	12	Battery holder
6	Flexible hose (Cold)	13	Battery holder mounting plate
7	Flexible hose (Hot)	14	Battery holder lid



3. INSTALLATION



ALL SUPPLY PIPEWORK SHOULD BE THOROUGHLY FLUSHED BEFORE CONNECTING TO THE TAP, THIS IS TO REMOVE ANY DEBRIS.

Fig 1

- Before fitting to the sink, connect the flexible hoses (1) supplied to the connections at the base of the tap and tighten firmly. The hot and cold connections are marked with the letters H and C.
- Feed the flexible hoses and power cable through the hole in the sink or worktop and secure the tap in place using the shaped rubber and brass washers (2) and tightening the fixing nut (3).

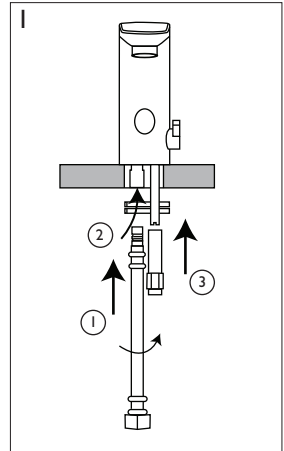


Fig 2

- Connect the flexible hoses to the Hot and Cold mains water feed and check for leaks before isolating the supply.

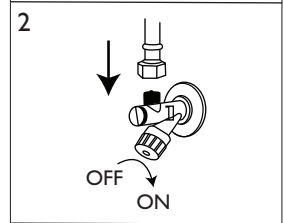


Fig 3 & 4 (Battery operation)

- Remove the battery holder lid and fit 4 AA Alkaline batteries ensuring that they are fitted in the correct orientation. This can now be connected directly to the tap power cable at the base of the tap.

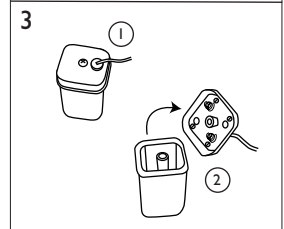


Fig 5

- If you choose to power the tap with a mains power supply, ensure that the supply voltage is correct and is wired as follows:
Live - Brown Wire
Neutral - Blue Wire
- Connect the tap power cable to the battery holder / transformer.

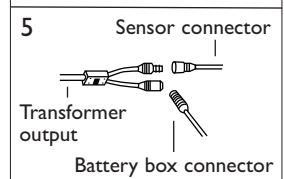
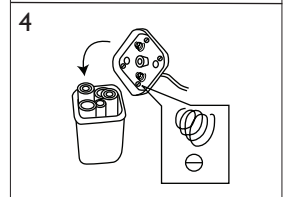


Fig 6

- Fix the battery holder mounting plate to the wall securely as shown using the fixings provided.

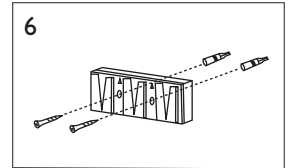


Fig 7

- Slide the battery holder onto the mounting plate to secure in place.

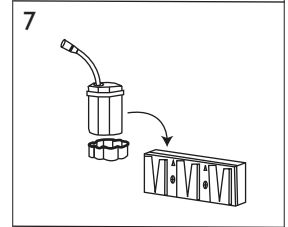
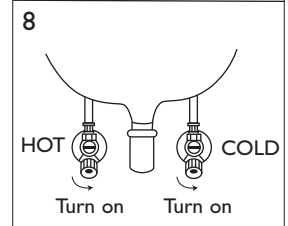


Fig 8

- Turn on the hot and cold mains supply.



Use with Instantaneous water heaters

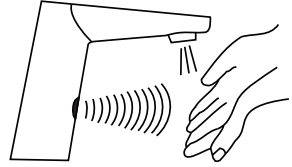
The tap is supplied with a standard aerator but for use with instantaneous water heaters a tap spray nozzle is recommended (3 options supplied).

- Turn on mains water supply. Remove the aerator and flush through by opening the tap. Select the correct tap spray nozzle using the table below and fit into the tap.

Tap spray nozzle	Max flowrate (litres/min)	Best Suited to water heater	Colour code identification
IN-TSN-2.0	2.0	4.4kW Rho	White/Black
IN-TSN-2.5	2.5	6.0kW Rho	White/Green
IN-TSN-3.0	3.0	9.6kW Aquila	White/Lilac

4. OPERATION

- To operate, place your hands under the tap to activate the sensor. The flow will stop when you remove your hands. It will automatically stop after 30 seconds of continuous flow. Wait 3 seconds before next use.



5. CARE AND MAINTAINANCE

- Keep the surface of the Infrared tap clean and dry.
- Clean with a damp cloth only - Do not use abrasives.

Changing batteries

If using battery operation, the batteries (4 x AA Alkaline) can be replaced by removing the battery holder lid. A small pozi-screwdriver is required to remove the lid.

6. TECHNICAL SPECIFICATION

MODEL NO	TAPIFR
POWER INPUT	DC:6V (4X1.5V AA Alkaline battery) AC:220-240V (50/60Hz)
SENSOR DETECTION ZONE	10-35cm
WATER PRESSURE	0.05-0.7Mpa
POWER CONSUMPTION	AC: <0.5mw; DC: <0.3mw
INLET / OUTLET DIAMETER	G1/2"
WATER TEMPERATURE	1-50°C
REACTION TIME	<1 Second

7. TECHNICAL SHOOTING

SYMPTOM	POSSIBLE CAUSE	SOLUTION
No water flowing from the tap	Batteries require	Change the batteries replacing
	No mains water supply	Check water supply
	Water pressure too low	Increase water Pressure
	Dirt in the filter	Clean filter
Water will not turn off	IR Sensor dirty	Clean IR sensor with a damp cloth
Flowrate too low	Reduced flowrate	Increase flowrate
	Blocked filter	Clean filter
	Water pressure too low	Increase water pressure
Flowrate too high	Water pressure too high	Reduce water pressure
Short battery life	Incorrect batteries fitted	Change to 4AA Alkaline batteries
The Indicator light is not on	The light is broken	Change the light or circuit board
	The circuit board is wet	Dry out
	The batteries have expired	Change the battery
	Poor battery connection	Check battery connections

8. GUARANTEE AND SERVICE POLICY

This product is guaranteed against faulty materials and manufacture for a period of one year from the date of purchase. Hyco will in its sole discretion replace, repair or refund any faulty unit. Incorrect installation, frost damage, and the consequences of limescale deposits are excluded. Consequential costs such as labour charges or damage to fittings and surroundings are expressly excluded.



INFORMATION FOR CORRECT DISPOSAL OF THE PRODUCT IN ACCORDANCE WITH THE EUROPEAN DIRECTIVE 2002/96/E.

At the end of its working life this equipment must not be disposed of as household waste. It must be taken to a local authority waste collection centre or to a dealer providing this service. Disposing of electrical and electronic equipment separately enables its components to be recovered and recycled to obtain significant savings in energy and resources. In order to underline the duty to dispose of this equipment separately, the product is marked with a crossed out dustbin.



Hyco Manufacturing Ltd
Normandy Court, Express Way
Castleford, WF10 5NR

Sales: 01924 225 200
Fax: 01924 225 210
Switchboard: 01924 225 215

Email: sales@hyco.co.uk
www.hyco.co.uk

■ WATER HEATING

■ SPACE HEATING

■ HAND DRYERS