



Palmera & Serena

Decorative Lighting



Data Sheet

Product Information

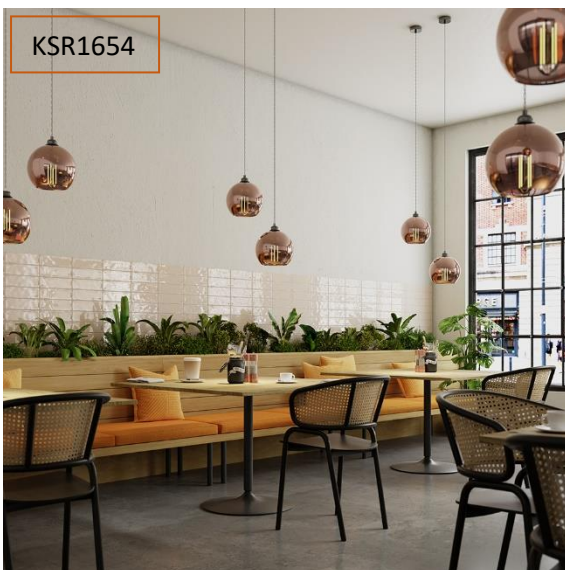
Palmera & Serena E27 Shade Range are ideal for Domestic and Hospitality applications.

With two finishes available Chrome and Copper.

Comes with a 1 year warranty for your peace of mind.

Product Features

- 1 year warranty
- Suitable for E27 and E27 LED filament lamps
- Suitable for use with KSR1650
- Available in Chrome and Copper



Product Specification

Product Code	Product Description	Wattage (W)	Screw Cap	Lumens (lm)	Energy Efficiency Class	Protection Class
KSR1653	Palmera Glass Shade Only	10w LED Max	E27	Varies	Dependant on lamp choice	N/A
KSR1654	Serena Copper Shade Only	10w LED Max	E27	Varies	Dependant on lamp choice	N/A

Nominal voltage	220-240VAC
Operating frequency	50/60Hz
Circuit Wattage	Dependant on lamp
Circuit Current	Dependant on lamp
Driver Current rating	N/A
PFC	varies
In Rush Current	varies
Ambient temperature range	0°C~+35°C
Start time	< 0.5 sec
IP rating	20

Construction

Shade: Glass

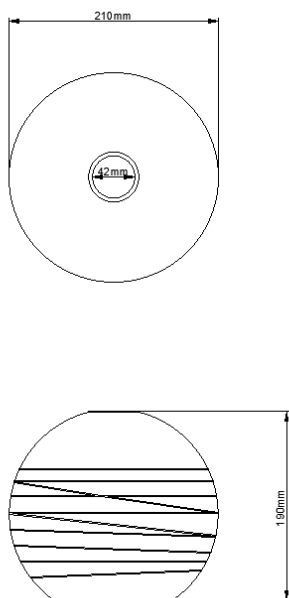
Standards

BSEN60598-1:2021 Luminaires – Part 1: General requirements and tests

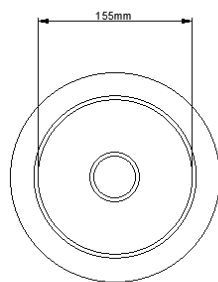
In Conformity with

RoHS Restriction of hazardous substances 2015/863/EU

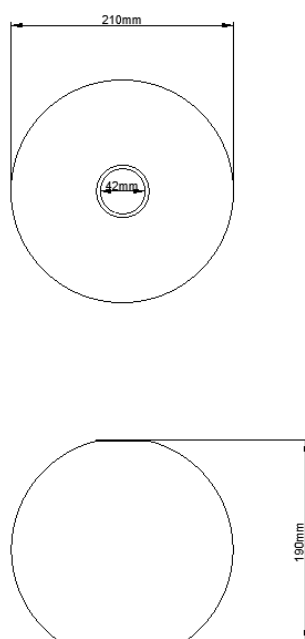
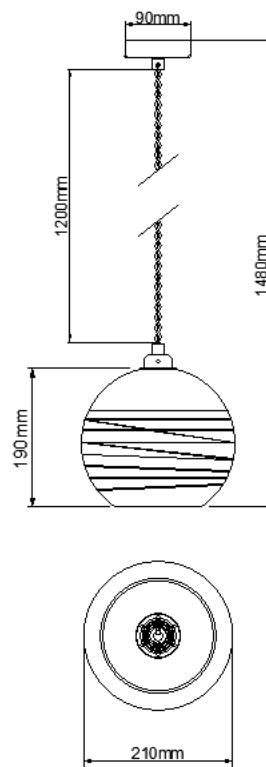
Product Dimensions



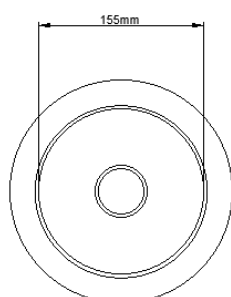
KSR1653 (Shade Only)



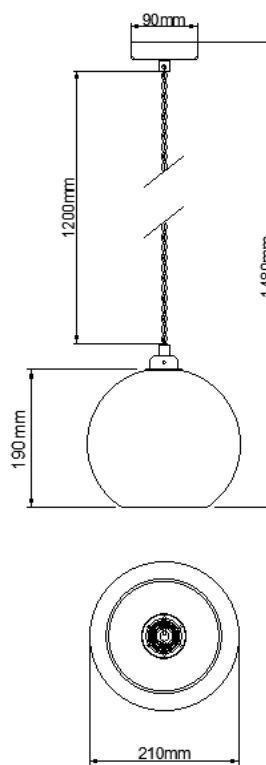
KSR1650+KSR1653



KSR1654 (Shade Only)



KSR1650+KSR1654



KSR Lighting is constantly developing and improving its products. For this reason, all product descriptions in this data sheet are intended as a general guide, and KSR may change specifications from time to time in the interest of product development, without prior notification or public announcement. All descriptions in this data sheet present only general particulars of the goods to which they refer and shall not form part of any contract. Data in this guide has been obtained in controlled experimental conditions. However, KSR Lighting cannot accept any liability arising from the reliance on such data to the extent permitted.