

# Installation Sheet

# KSR95102 + KSR95103

Navara



External IP65 LED Strip

Read these instructions before commencing installation. Please give these instructions to the owner/occupier after installation to retain for future reference/maintenance.

IP65 12V 5.8W Per Metre

### Important Information

It is recommended that these luminaires are installed and fitted by a qualified electrician ensuring the installation complies with current IEE wiring regulations & local building control. These products are designed for connection to a 12V Constant Voltage DC supply.

Any faulty, broken or damaged luminaires should be replaced immediately.

KSR will not accept responsibility for any claims arising from a poor installation.

Please Note: The limited warranty shall be deemed null and void in the following circumstances: Failure by the installer, end user or any third party to exercise caution to protect any covered product or part from outside damage, humidity conditions, fluctuations in the electrical system or physical abuse as well as failure related to workmanship in the installation of the products or parts.

### Important User Advice

Always switch off mains supply before servicing.

The LED strip can be cut on the indicated cut lines only if required.

### Installation Procedure

KSR recommend that you familiarize yourself with the connections and suitable locations for the IP65 rated strip and driver.

Disconnect and isolate the mains supply.

Ensure that the surface to be adhered to is clean, dry and well unified we recommend wiping with a cleaning solvent i.e. isopropyl alcohol.

For best results the temperature should be between 21°C and 38°C, applying below 10°C is not recommended due to the adhesive becoming too firm to adhere readily.

However, once properly applied, low temperature holding is generally satisfactory.

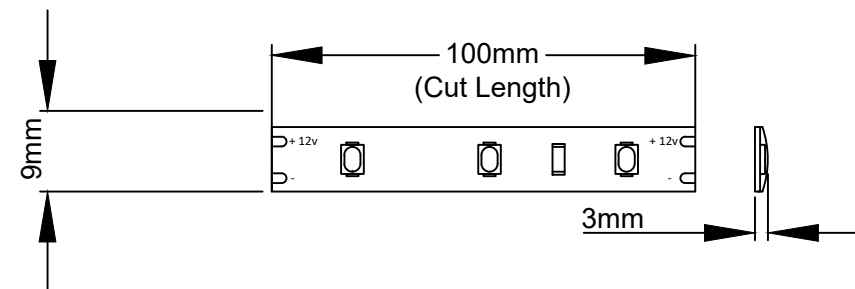
Select your 12VDC constant voltage driver and connectors as required.

Peel the backing from the adhesive tape and applying reasonable pressure stick the LED strip to the location required care should be taken to avoid damaging the strip.

Please note that the minimum bend radius is 30mm, anything less than this will damage the LED strip.

Connect the LED strip to the driver ensuring correct polarity (Fig. 1) and the driver to the mains supply.

Re-connect the mains supply and test.



IP65 5.8W Bespoke LED Strip

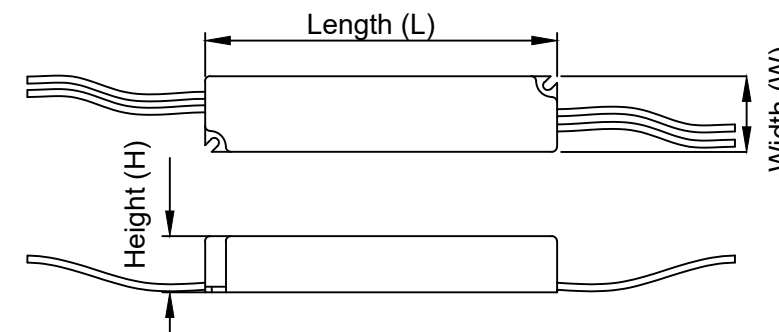
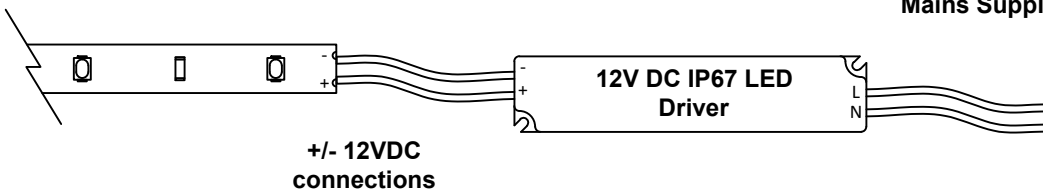


Fig. 1

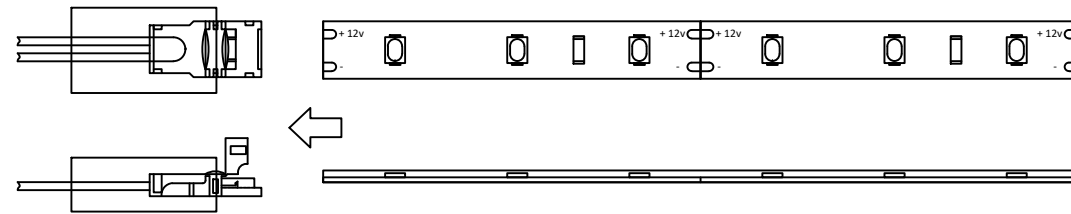
220-240VAC  
Mains Supply



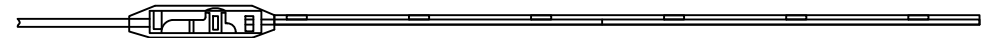
	Input	Wattage	Max Tape Run	Dimensions Length x Width x Height
KSRDL283	220-240VAC 50/60Hz	12W	300mm-1.5m	141mm(L) x 31mm (W) x 22mm (H)
KSRDL285	220-240VAC 50/60Hz	35W	300mm-5m	150mm(L) x 40mm (W) x 30mm (H)
KSRDL286	220-240VAC 50/60Hz	60W	300mm-10m	165mm(L) x 42mm (W) x 32mm (H)
KSRDL297	220-240VAC 50/60Hz	12W	300mm-1.5m	128mm(L) x 50mm (W) x 13mm (H)
KSRDL298	220-240VAC 50/60Hz	30W	300mm-4.5m	128mm(L) x 50mm (W) x 13mm (H)
KSRDL299	220-240VAC 50/60Hz	60W	2m-8m	185mm(L) x 62mm (W) x 22mm (H)
<b>Dimmable Driver options (single colour Strip only)</b>				
KSRDL278	220-240VAC 50/60Hz	30W	2m-8m	128mm(L) x 50mm (W) x 13mm (H)
KSRDL279	220-240VAC 50/60Hz	60W	6m-10m	185mm(L) x 62mm (W) x 22mm (H)

## Connecting the LED strip

Step 1 - Connect you 3m tail to the start of your LED tape run

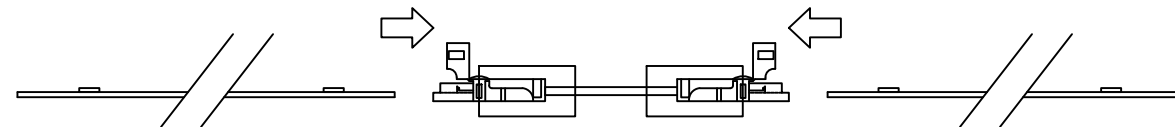


- Push the the start of you LED tape into the connector ensuring it is inserted fully
- With the tape fully inserted push down the LED strip onto the the teeth inside the connector. This will ensure the tape does not come loose when closing the connector cover
- Snap cover shut and ensure tape is gripped tight in connector. (May require Pliers to Crimp Shut)
- With IP65 tubing already supplied and cut to size now needs to be positioned over the connector as shown above and heat shrunk in place to create a water tight seal. there should be no air gaps between the tape heat shrink tubing



Step 2 - Connecting strip to strip

- For a strip to strip connection use the 100mm connectors where required to make secure connections, however when using profile bars with the LED tape the connections must be made via soldering



Step 3 - Dimmable controls

- For dimmable applications use a KSR9564 with a KSR9566

### Power Input

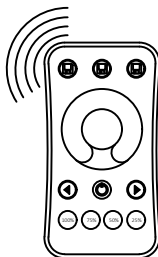
LED +  
-  
Output from LED Driver



### Power Output

+  
- LED

Output to Start of LED Tape run



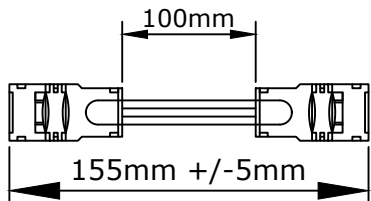
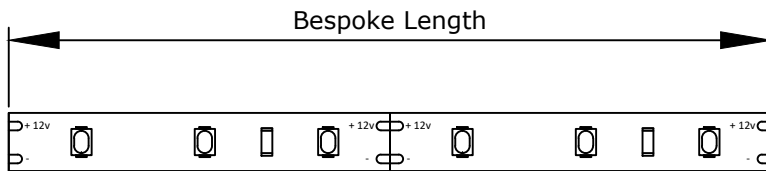
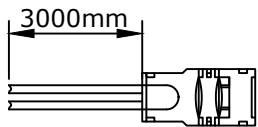
## Important Information

When using profile bars with the 12v LED strip solder connections must be made as strip connectors will not fit into the profile bar. When making solder connections it is recommended that this is done by competantly trained operator.

**Please note the controller and Remote are not suitable for outdoor use or use in wet areas, suitable precautions will be required to ensure the device does not have water damage ie Plastic IP rated enclosure**

## For Tape Operation you will require:

- 1x 3m 20AWG Cable with a wire to strip connector with IP65 heat shrink tubing (to be set in place by installer)
- Optional - KSR95111 100mm 20AWG Cable strip to strip connector
- Bespoke Length(s) of tape max length not exceeding 10m
- 12V IP67 Constant Voltage Driver



KSR Lighting Aftersales: 023 92 674343  
E-mail: aftersales@ksrlighting.com