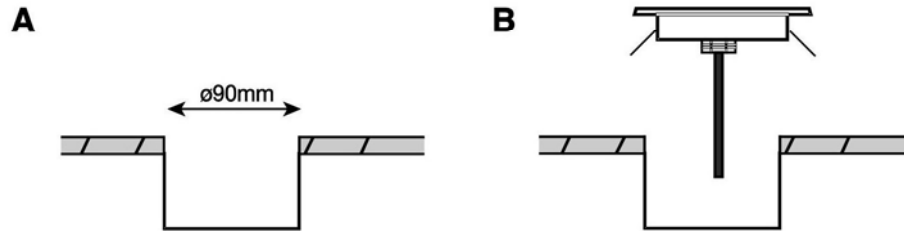
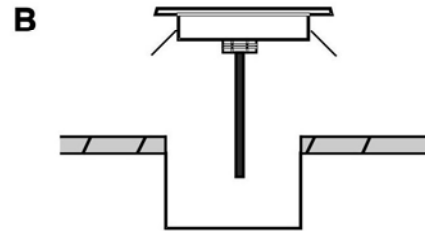


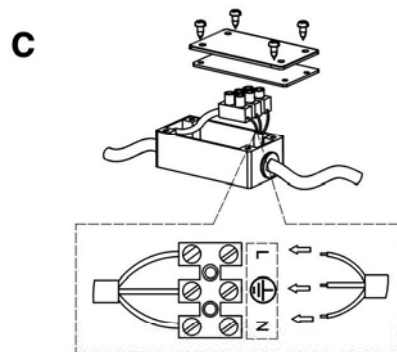
DECKING INSTALLATION



A. Cut a hole 90 mm diameter in the decking or board ensuring it does not infringe with any gas/water pipes or electrical cables that may be hidden below the surface.



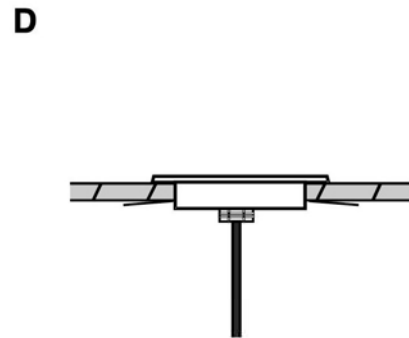
B. With the 4 x machine screws (supplied) fix the 2 x spring clips (supplied) to the body. Ensure the clips are pointing out



C. Connect the pre-installed flexible cable to a suitable joint box ensuring correct polarity is observed.

BROWN-LIVE, GREEN/YELLOW-EARTH, BLUE-NEUTRAL

The joint box must be IP65 or above rated if used externally or underground



D. Finally, push the fitting into the decking or board

Check for correct operation.

PLEASE NOTE: IF CABLE IS BURIED UNDERGROUND IT IS ADVISED THAT A SUITABLE NON -CORROSIVE CONDUIT IS USED.

Knightsbridge®
the mark of quality

INSTALLATION & MAINTENANCE MANUAL LEDM08B1 - LEDM08W1



IP65 LED RECESSED LUMINAIRE



GENERAL INSTRUCTIONS:

These instructions should be read carefully and retained after installation for further reference and maintenance.

SAFETY

- Before installation/maintenance, ensure that the mains supply to the luminaire is switched off and the circuit fuses are removed or circuit breakers switched off.
- Check that the total load on the circuit including when this luminaire is fitted does not exceed the rating of the circuit cable, fuse or circuit breaker
- Installation of this luminaire should only be carried out by, or under supervision of, a qualified electrician to the current IEE Wiring Regulations (BS7671).
- Please recycle this unit.
- This product is suitable as a “drive-over” fixture (1000Kg 5mph).
- This product is suitable for internal and external use, it may be installed into walls, ground & decking.
- This product is IP65 rated and suitable for external applications where applicable.
- This product is class I and should be earthed
- This product is non-dimmable
- 230V 50hz Rated – No driver required

REPLACING LAMPS

- The LED lamps fitted in this product are non-replaceable

WARRANTY

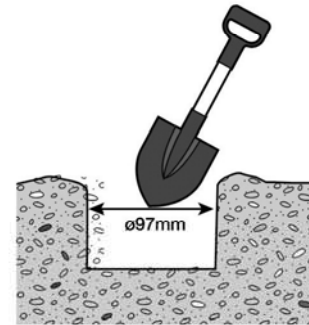
- This product has a warranty of 1 year from date of purchase. Failure to install this product in accordance with the current edition of the IEE Wiring regulations, improper use or removal of the batch codes will invalidate the warranty. If this product should fail within its warranty period it should be returned to the place of purchase for a free of charge replacement. ML Accessories does not accept responsibility for any installation costs associated with the replacement product. Your statutory rights are not affected. ML Accessories reserve the right to alter product specification without prior notice.

CLEANING

- Clean with a soft dry cloth only, do not use other materials or solutions which may damage the fitting

GROUND INSTALLATION

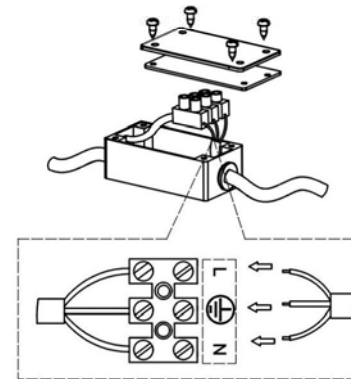
A



A. Make a hole 97mm diameter & 50mm deep in the ground ensuring it does not infringe with any gas/water pipes or electrical cables that may be hidden below the surface.

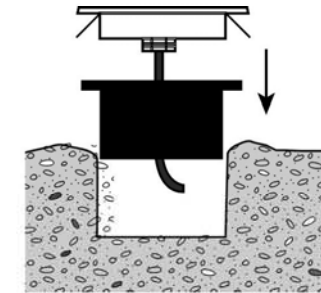
Ensure the bottom of the hole is suitably drained with 300mm gravel

C



C. Connect the preinstalled flexible cable to a suitable joint box ensuring correct polarity is observed. **BROWN-LIVE, GREEN/YELLOW-EARTH, BLUE-NEUTRAL** The joint box must be IP65 or above rated if used externally or underground

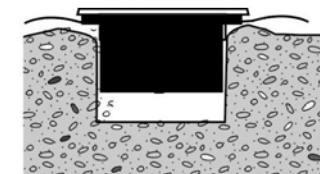
B



B. With the Allen Key supplied, remove the 4 x machine screws fixing the bezel to the body and remove the bezel.

Thread the cable through the plastic sleeve and secure the plastic sleeve into the ground using cement or similar material.

D



D. Align the 4 x countersunk holes in the body of the fitting with 2 x holes & 2 x studs in the plastic sleeve. Secure the body to the sleeve using the 2 x countersunk screws provided

Finally, replace the bezel and secure using the 4 x machine screws and Allen key provided. Ensure they are tightened evenly.

PLEASE NOTE: WHEN CABLE IS BURIED UNDERGROUND IT IS ADVISED THAT A SUITABLE NON -CORROSIVE CONDUIT IS USED.