

## PIR SETTING:

- Detection range: up to 8m when mounted at 2.4m height
- Detection angle: 110°
- Time delay: 10sec to 4min
- Lux detection: 10lx to 2000lx

This PIR has a manual override function which can be set by the following step:

Turn the switch on and off twice within a 3 second period to enable the manual override setting

- To cancel manual override, turn the switch off leave for 30 seconds then switch back on

## GENERAL:

The unit should be recycled in the correct manner when it reaches the end of its life. Check local authorities for where facilities exist.

Clean with a soft dry cloth only, do not use aggressive cleaning products or solvents which may damage the fitting.

We recommend using a lamp of a maximum 35W max lamp.

## WARRANTY:

This product has a limited warranty of 1 years. Failure to install this product in accordance with the current edition of the IEE Wiring Regulations, improper use, or removal of the batch codes will invalidate the warranty. If this product should fail within its warranty period it should be returned to the place of purchase for a free of charge replacement. ML Accessories does not accept responsibility for any installation costs associated with the replacement product. Your statutory rights are not affected. ML Accessories reserve the right to alter product specification without prior notice.

## INSTALLATION & MAINTENANCE MANUAL WALL4LSS



## GENERAL INSTRUCTIONS:

These instructions should be read carefully and retained after installation by the end user for future reference and maintenance.

These instructions should be used to aid installation of the following product:

WALL4LSS

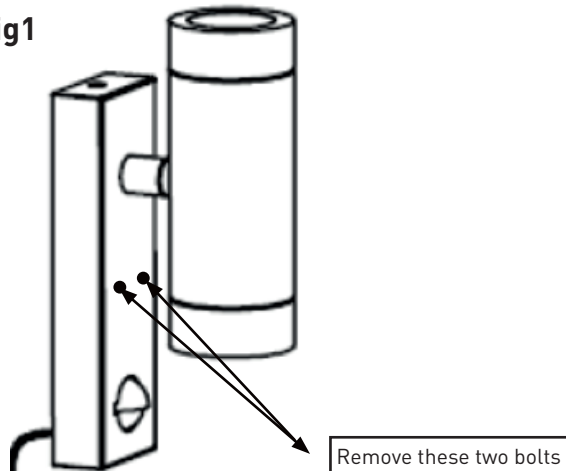
## SAFETY:

- Installation of this luminaire should only be carried out by a qualified electrician or competent person to the latest Building and current IEE Wiring Regulations (BS7671)
- Please isolate mains prior to installation/maintenance
- Check the total load on the circuit (including when this luminaire is fitted) does not exceed the rating of the circuit cable, fuse or circuit breaker
- Please note the IP (Ingress of Protection) rating of this luminaire when deciding the location for installation
- This product is Class I and requires an earth
- This product is dimmable subject to lamp source
- This product is IP44 rated

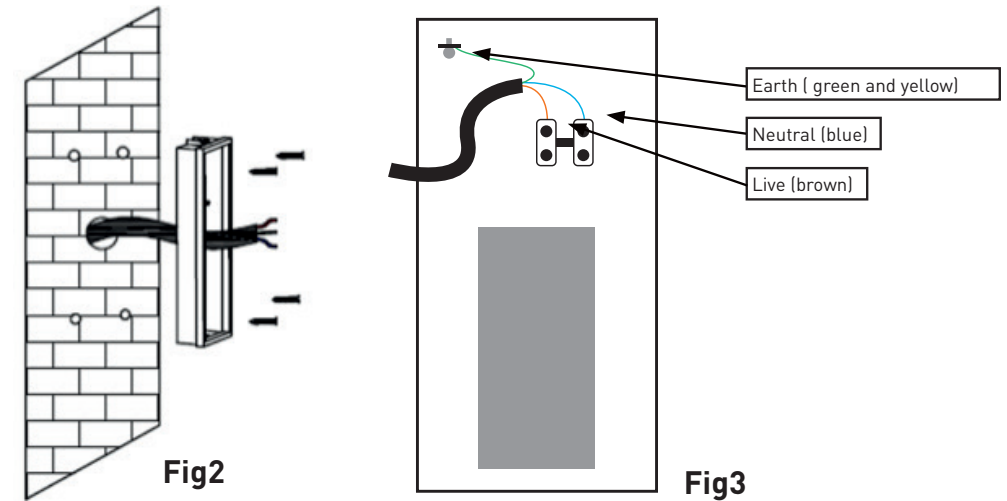
## INSTALLATION:

- Provide power to the required point of installation. Suitable IP rated junction boxes should be used where required
- To access the terminal block remove the rear access panel by removing the 2 bolts on the front as shown in Fig 1.

Fig1

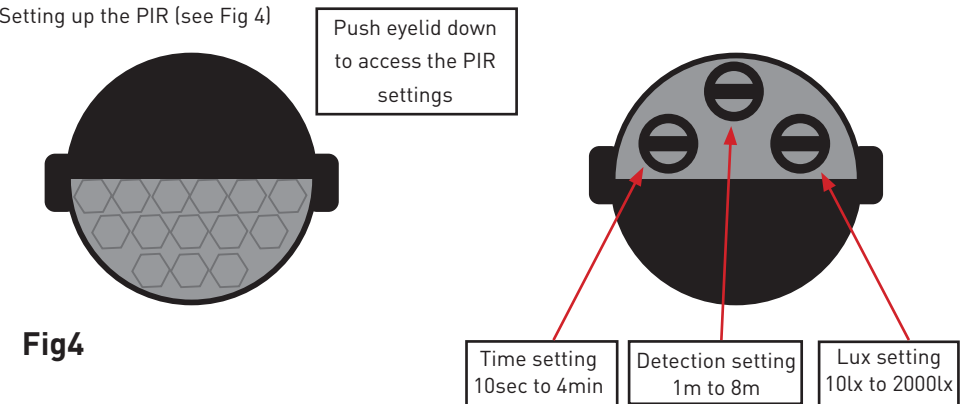


- Mark the location of the fixing holes and drill the holes ensuring not to infringe with any joists, gas/water pipes or electrical cables (see Fig 2)



- Connect the LED driver to the mains supply ensuring the correct polarity is observed (see Fig 3). Live (brown), Neutral (blue) and Earth (green and yellow)

- Setting up the PIR (see Fig 4)



- Push the PIR eyelid up (covering the PIR settings)
- Turn the dial clockwise to increase the value of each setting
- Turn off the fitting, and turn on after a period of 10 seconds for the PIR settings to be registered
- Switch on power supply and check for correct operation