

## INSTALLATION & MAINTENANCE MANUAL DC005

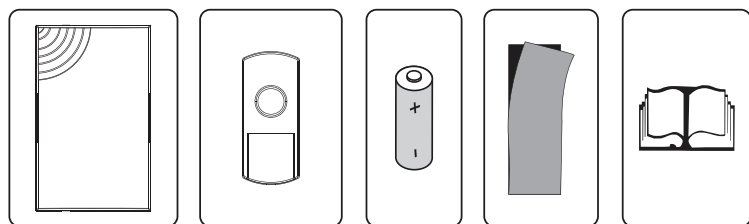
It is very important to install and operate this product according to the following instructions. Failure to do so may render your guarantee void.

### Accessories list

The door chime kit comes with:

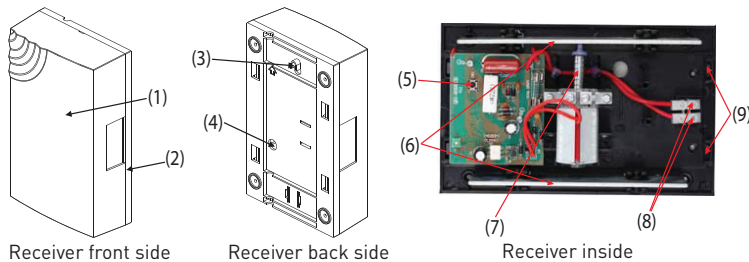
- 1 x Chime
- 1 x Bell push
- 1 x 23A 12V battery for bell push
- 1 x Double-sided adhesive pad
- 1 x Instruction manual

### Pictures for accessories



Receiver Transmitter 23A 12V battery Double-sided adhesive tape Instruction manual

### Names for parts



Receiver front side Receiver back side Receiver inside

3. Connect the mains 230V cable to the terminal block supplied ensuring correct polarity is observed.  
BROWN- LIVE BLUE - NEUTRAL



5. Test for correct operation

4. Align the lugs on the cover with the corresponding holes in the base and replace the front cover.



### Operating instructions

#### Door chime operation

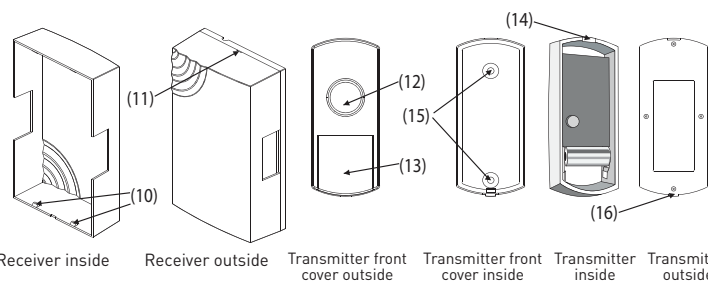
Press the push button on the bell push unit once, a wireless signal is sent to the receiver which will sound. The sound will stop as soon as the melody ends. To repeat the sound, press the button again. Please note, holding the button in will not repeat the sound.

#### Auto-learning code button

There is an auto-learning code button under the melody selector. If you want an additional bell push to work with the receiver, press the auto-learning code button once and the bell push will work with the receiver (please see detailed operation 'auto-learning code set up' in this manual).

#### Nameplate

There is a nameplate position on the bell push for user identification. Remove the nameplate cover and insert a suitably sized label with name or required information, then replace the cover (label is not included with this kit).



Receiver inside Receiver outside Transmitter front cover outside Transmitter front cover inside Transmitter inside Transmitter outside

### Names of Parts

1. Front cover	9. Fastening holes
2. Back cover	10. Fastening points
3. Hanging hole	11. Separating hole
4. Power cable hole	12. Push button
5. Auto-learning code button	13. Nameplate cover
6. Chime bars	14. Front cover and back cover hook
7. Plunger	15. Standby holes for screws
8. Cable connection terminals	16. Interface

### Notes before installation

1. Before installation and operation, you will require a drill, cross-head screwdriver, flat-head screwdriver, power cable with plug (cable length to suit your requirements), fixing screws and wall plugs. These items are not supplied with this kit
2. Avoid positioning the bell push on metal frames
3. Avoid positioning above heat sources such as radiators, or in damp areas such as a kitchens or bathrooms

### How to use the door chime kit

Pressing the bell push, a wireless signal will be sent to the receiver. The receiver will be activated and sound. The operating range is 100m (in the open air) and you can use the receiver virtually anywhere in the home (indoor use only). However, the transmission range will be reduced if the signal is transmitted through walls or ceilings. Metal or PVCu doorframes can also reduce the operating range.

### Important

1. The receiver is designed for indoor use only
2. Do not mount the bell push onto any metal surface or PVCu doorframes as this will reduce the operation range
3. Do not expose either unit directly to rain or immerse in water
4. Do not mount either unit close to a fireplace or expose to high temperatures
5. If leaving the door chime for long periods, please remove the battery from compartment to prevent leakage
6. Please dispose of old batteries in accordance with the relevant legislation

### User hints

If the receiver does not sound, please check the following:

- Flat batteries in either bell push or receivers - change the batteries
- Wrong battery polarity in either bell push or receivers - re-insert the batteries
- Units are out of range - operate the receiver within the recommended operation range

### Specification

#### Bell push unit

Power: 1 x 12V 23A battery (included)

#### Receiver unit

Power: 230V AC ~50Hz (power cable not included)

Operating temperature: -30 °C (to +400 °C)

Operating distance: 100 meters in the open air (265ft approx.-in open air and suitable conditions)

Sound type: Authentic/traditional doorbell sound

Digital code type: Auto-learning

#### What is auto-learning code?

The bell push sends a wireless signal to the receiver. The receiver will automatically register and memorize the signal as an operation code. The bell push will work with the receiver by using this code.

#### Auto-learning code set up

The door chime kit is equipped with auto-learning operation code ability.

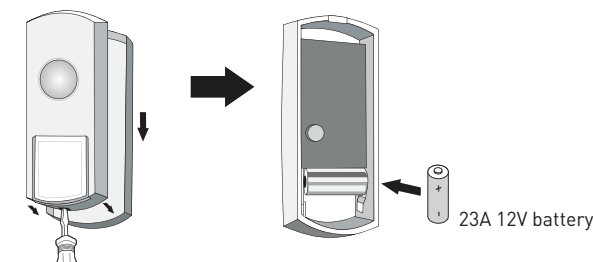
1. Operation for 1 bell push and 1 receiver

After battery installation on both bell push and receiver, press the bell push once to

### Battery installation

#### Bell push unit

- The bell push uses a 12V 23A battery (included)
- Open the bell push by pushing in the interface located at the bottom with a flat-head screwdriver and insert the battery. Please note the correct battery polarity

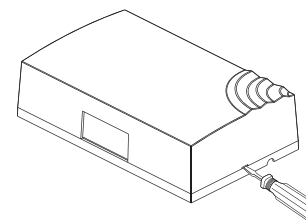


#### Power cable wiring connection for receiver unit

- Before installation/maintenance, ensure the mains supply to the product is switched off and the circuit fuses are removed or circuit breakers switched off
- Check that the total load on the circuit including when this product is fitted does not exceed the rating of the circuit cable, fuse or circuit breaker
- Installation of this product should only be done or under supervision of a qualified electrician to the current IEE Wiring and Building regulations

The receiver unit uses AC 230V power supply and should be connected with a power cable according to the following steps:

1. Separate the front cover from the back by pushing and prizing the separating hole (see picture below)
2. Insert the power cable into the receiver via the power cable hole (see photo below)



generate a new operation code. The receiver will sound which indicates that a new operation code is registered and memorized

2. Interference from another door chime operating nearby (for example: receiver sounds for no reason): remove the batteries from the receiver and rest for 30 seconds. This will erase the memory. Insert the batteries, and the bell push and receiver are ready for the new code registration
3. Operation for the 2nd / 3rd / 4th / 5th bell pushes and the receiver (there is only 1 bell push included with this kit):
  - (a) Load the batteries into the bell pushes, and the receiver is ready for the new code registration
  - (b) Press the auto-learning code button on the back of the receiver once, and it will be ready to receive the signal sent from the second bell push. Press the button of the next bell push, the receiver will sound to indicate that new operation code is registered and memorized. Thus the second bell push works successfully with the receiver. For the 3rd, 4th, and 5th bell pushes, please follow the same procedure
  - (c) It is important to remember that when you replace dead batteries with new ones, please follow the auto-learning code set-up procedure as above

### Notes

- (a) If the receiver sounds for no reason during the digital code setting, this indicates interference from another similar door chime nearby. Reset the auto-learning code (as per point 2 above)
- (b) One receiver will work with maximum five bell pushes at the same time. If the bell push is missing a terminal, the bell push can be purchased separately and set up using the auto-learning code instructions above

**IMPORTANT: PLEASE KEEP THESE INSTRUCTIONS FOR FUTURE REFERENCE WHEN REPLACING BATTERIES**