

## INSTALLATION & MAINTENANCE MANUAL DC006

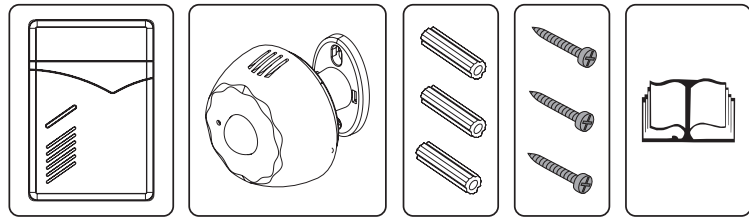
It is very important to install and operate this product according to the following instructions. Failure to do so may render your guarantee void.

### Accessories list

The door chime kit comes with:

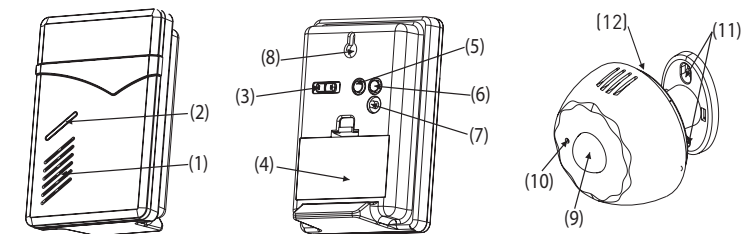
- 1 x Receiver
- 1 x Sensor
- 1 x Instruction manual

### Pictures for accessories



Receiver      Infrared sensor transmitter      Wall plugs      Screws      Instruction manual

### Names for parts



Receiver front side      Receiver back side      Infrared sensor transmitter

1

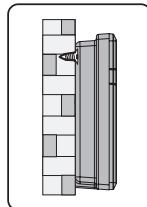
### Wall mount

To install you will require a drill and cross-head screwdriver.

**IMPORTANT:** Before you drill any hole in the wall, please make sure there are no cables or pipes that may accidentally be damaged.

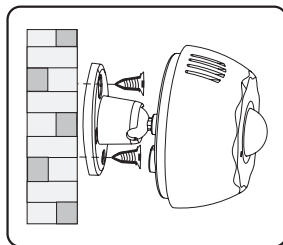
### Receiver unit

Fix a screw on the wall and hang the receiver by the hole at the back of the unit. Avoid positioning on PVCu frames, above heat sources (e.g. radiators) or in damp areas such as a kitchens or bathrooms. Important: test the receiver before drilling any holes to ensure it is within operating range.



### PIR sensor

Drill a hole on the wall at the required height. Insert a wall plug (included) into the hole. Insert a screw (included) into the wall plug. Please note, you should not insert the screw completely into the wall plug but keep a suitable length out of the wall surface to hold the sensor. Finally, hang the sensor (mounting on PVCu or metal doorframe surfaces will reduce the transmitting range).



### Functions instructions

#### Chime operation

Press the push button on the sensor unit once, a wireless signal is sent to the receiver which will sound. The sound will stop as soon as the melody ends.

#### Melody selection

There is a melody selector located on the back of the door chime on the right. Press the selector to choose a different melody.

#### Sound and flash

There is a switch on the back of the receiver on the left. Slide the switch to the left position, the receiver will work with sound only; slide to the middle position, the LED will flash only; slide to the right position, there will be sound and LED flash.

#### Volume adjustment

4

### Names for parts

1. Speaker	7. Auto-learning code button
2. LED indicator	8. Hanging hole
3. Sound-and-flash switch	9. PIR sensor
4. Battery cover	10. LED indicator
5. Volume button	11. Hanging holes
6. Melody selector	12. On/off button

### Notes before Installation

1. Before installation and operation, you will require a drill, cross-head screwdriver, flat-head screwdriver, 3xAAA 1.5V batteries for PIR sensor and 2 x AA 1.5V batteries for the receiver, fixing screws and wall plugs. These items are not supplied with this kit
2. Avoid positioning the sensor on metal frames
3. Avoid positioning above heat sources such as radiators, or in damp areas such as a kitchens or bathrooms

### How does it work?

Basically, there are two parts to this PIR system.

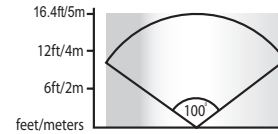
The sensor contains a passive infrared PIR sensor which detects the moving heat created by an automobile's engine (or any other noticeably hot object moving at sufficient speed). It will send a signal to the receiver. The sensor should be deployed outdoors where it will have a clear view of the driveway, pathway or the area you wish to monitor.

The receiver can be mounted inside your home, business, warehouse, shed, etc. provided it's within the range of the outdoor unit. It contains a series of LEDs and a small buzzer to let you know when the outdoor unit detects motion.

### Placement guide

To know exactly where you should place the PIR sensor, and which way you should aim it, it is worth thinking about how the PIR sensor works to avoid generating false activations

The PIR, as its name suggests, is a passive sensor unlike a security camera with IR LEDs for night vision which active infra-red. Basically, all objects emit some



2

There is a volume button between the melody selector and the sound-and-flash switch. Press to adjust the sound volume - high, medium and low.

### Auto-learning code button

There is an auto-learning code button under the melody selector. If you want an additional sensor to work with the receiver, press the auto-learning code button once and the sensor will work with the receiver.

### Important

1. Receiver is designed for indoor use only
2. Do not mount the sensor onto any metal surface or PVCu (doorframes, as this will reduce the operation range)
3. Do not expose either unit directly to rain or immerse in water
4. Do not mount either unit close to a fireplace or expose to high temperature
5. If leaving the door chime for long periods, please remove the battery from compartment to prevent leakage
6. Please dispose of old batteries in accordance with the relevant legislation

### User hints

If the receiver does not sound, please check the following:

- Flat batteries in either sensor or receiver - change the batteries
- Wrong battery polarity in either sensor or receivers - re-insert the batteries
- Units are out of range - operate the receiver within the recommended operation range

### Specification

#### PIR sensor

Power: 3 x AAA 1.5V batteries (not included)

PIR angle: 100° (wall mounted)

PIR range: <math>\leq 5\text{m}</math> (dependent on environment)

Transmission range: 100m (dependent on environment)

#### Receiver

Power: 2 x AA 1.5V batteries (not included)

Operating temperature: -30°C to +40°C

Range: 100m (dependent on environment)

Selectable tones: 36 melodies available

Digital code type: auto-learning

Tips and tricks: The PIR sensor is not infallible. In particular

5

infra-red radiation (we commonly call it "heat") and the sensor in this kit detects any radiation that moves.

### Installing/replacing batteries

#### PIR sensor

Requires 3 x AAA 1.5V batteries (not included)

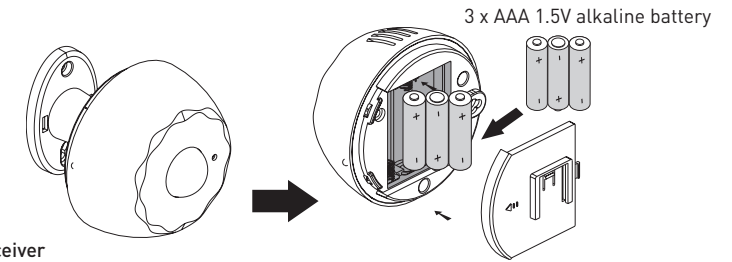
Remove the PIR sensor from its mounted position by sliding it off the mounting bracket.

Remove the battery cover by sliding it off.

Safely and responsibly dispose of the old batteries and replace with new

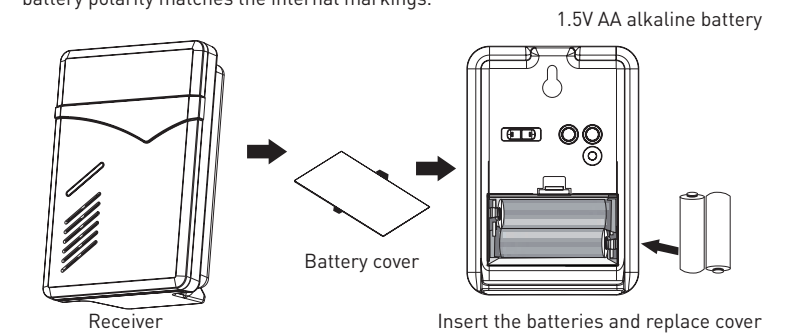
Replace the battery compartment cover - ensure battery polarity matches the internal markings, then re-mount the PIR sensor.

Always ensure the battery cover is fitted back correctly to prevent any moisture entering the device that could adversely affect the performance.



#### Receiver

Remove the battery cover and insert 2 x AA 1.5V batteries (not included). Ensure battery polarity matches the internal markings.



3

1. The sensor cannot detect anything that is the same temperature as their background. For example, a car which hasn't been running long (and is thus the same temperature as its surroundings) may go unnoticed until it warms up
2. Any moving heat source can trigger the sensor. For example a moving shadow on a sunny day may trigger activation, or the sun coming out from behind clouds

False triggers are rare and can be avoided by carefully positioning your sensor in an optimum position for its purpose. Avoid busy pathways, and try to aim sensor toward the exact location you want it to monitor i.e. your private driveway or pathway and it will only activate for moving objects you want to detect.

**IMPORTANT: PLEASE KEEP THESE INSTRUCTIONS FOR FUTURE REFERENCE WHEN REPLACING BATTERIES**

6