

## INSTALLATION & MAINTENANCE MANUAL DC007

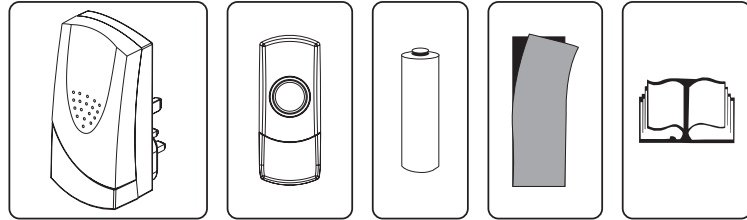
It is very important to install and operate this product according to the following instructions. Failure to do so may render your guarantee void.

### Accessories list

The door chime kit comes with:

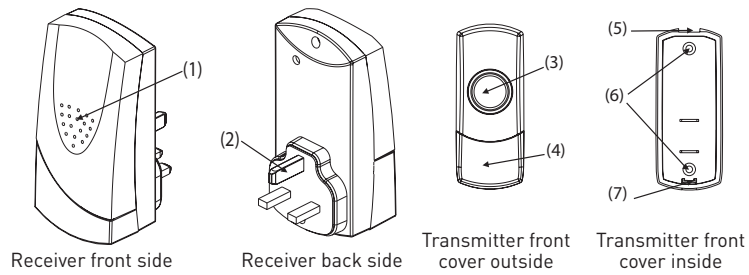
- 1 x Receiver
- 2 x Bell push
- 2 x 12V 23A batteries for bell pushes
- 2 x Double-sided adhesive pads
- 1 x Instruction manual

### Pictures for accessories



Receiver Transmitter 12V 23A battery Double-sided adhesive Instruction manual

### Names for parts



Receiver front side Receiver back side Transmitter front cover outside Transmitter front cover inside

### Door chime operation

Press the push button on the bell push once, a wireless signal is sent to the receiver which will sound. The sound will stop as soon as the melody ends, for repeated sound press the button again. Please note, holding the button down will not result in repeated chimes.

### Different melodies for the bell pushes

There are two built-in melodies with the receiver. The receiver will sound different melodies in response to bell push activation. You cannot select between the two different melodies.

### Important

1. The receiver is designed for indoor use only
2. Do not mount the bell push onto any metal surface or PVCu doorframes as this will reduce the operation range
3. Do not expose either unit directly to rain or immerse in water
4. Do not mount either unit close to a fireplace or expose to high temperatures
5. If leaving the door chime for long periods, please remove the battery from compartment to prevent leakage
6. Please dispose of old batteries in accordance with the relevant legislation

### User hints

If the receiver does not sound, please check the following:

- Flat batteries in either bell push or receivers - change the batteries
- Wrong battery polarity in either bell push or receivers - re-insert the batteries
- Units are out of range - operate the receiver within the recommended operation range

### Specification

#### Bell push unit

Power: 12V 23A battery (included)

#### Receiver unit

Power: 230V AC ~50Hz

Operating temperature: -30 °C (to +400 °C)

Operating distance: 100m (dependent on environment)

Selectable tone: Total 2 melodies available – 1 for each bell push activation

Digital code type: Pre-set code

### Names of parts

1. Speaker	5. Front cover and back cover hook
2. Plug	6. Standby holes for screws
3. Push button	7. Interface
4. Decoration only	

### Notes before installation

1. Before installation and operation, you will require a drill, cross-head screwdriver, flat-head screwdriver, fixing screws and wall plugs. These items are not supplied with this kit
2. Avoid positioning the bell push on metal frames
3. Avoid positioning above heat sources such as radiators, or in damp areas such as a kitchens or bathrooms

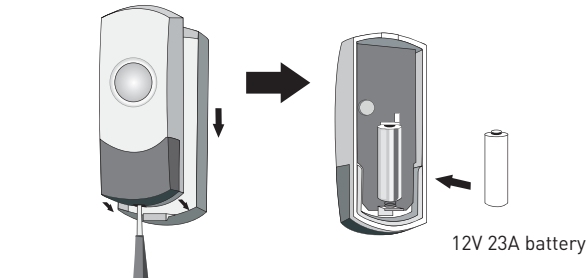
### How to use the door chime kit

Pressing the bell push, a wireless signal will be sent to the receiver. The receiver will be activated and sound. The operating range is 100m (in the open air) and you can use the receiver virtually anywhere in the home (indoor use only). However, the transmission range will be reduced if the signal is transmitted through walls or ceilings. Metal or PVCu doorframes can also reduce the operating range.

### Battery installation

#### Bell push unit

- Each bell push uses a 12V 23A battery (included)
- Open the bell push by pushing in the interface located at the bottom with a flat-head screwdriver and insert the battery. Please note the correct battery polarity



12V 23A battery

### What is pre-set code?

This means that the 2 bell pushes and receiver have been synced together during production and cannot be changed.

**IMPORTANT: PLEASE KEEP THESE INSTRUCTIONS FOR FUTURE REFERENCE WHEN REPLACING BATTERIES**

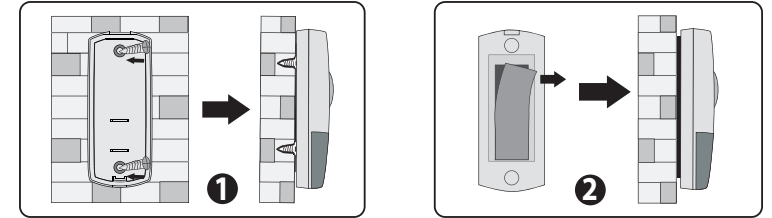
### Wall mount

To install, you will require a drill and cross-head screwdriver.

**IMPORTANT:** Before you drill any hole in the wall, please make sure there are no cables or pipes that may accidentally be damaged

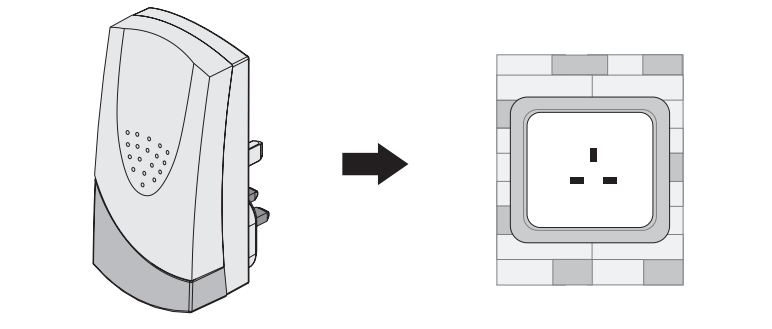
1. Open the bell push with a screwdriver and separate the front cover from the back cover (as previously described). Penetrate the two standby holes at the back cover with two screws and fix the screws onto the wall at a suitable height (see picture 1).
2. Alternatively, you can attach the bell push with double-sided adhesive tape (see picture 2)

Mounting on PVCu or metal doorframe surfaces will reduce the transmitting range



### Receiver unit

Plug the receiver unit into any UK power outlet of 230V ~ 50Hz. Please ensure you test the receiver to ensure it is within the recommended operating range of the two bell pushes.



3