

## TROUBLESHOOTING

This socket contains a short circuit and overload protection feature. If there is no power from the USB socket unplug the connected device. Check to ensure the USB socket and USB device have not come into contact with water, liquid or debris and the cable to the device is not damaged. With no device connected to the USB socket, it will automatically reset and be ready for use

We recommend using high quality USB charging cables as low cost options may cause compatibility issues and may inhibit your device's ability to charge efficiently



## INSTALLATION & MAINTENANCE MANUAL SK003



13A 1G RECESSED SWITCHED SOCKET WITH DUAL USB CHARGER

230V  
50Hz



IP  
20



ML Accessories Limited  
LU5 5TA  
[www.mlaccessories.co.uk](http://www.mlaccessories.co.uk)

09-14 V1 – BT



RoHS  
COMPLIANT



11

## CONTENTS

- 1 x 13A 1G recessed switched socket with dual USB charger and 2m cable
- 1 x fixing pack
- 1 x installation guide

## PLEASE READ THESE BEFORE COMMENCING INSTALLATION

- This is a Class I product and must be earthed
- These instructions should be read carefully and retained after installation for further reference and maintenance

## SAFETY

- Before installation/maintenance, ensure the mains supply is switched off and the circuit fuses are removed or circuit breakers switched off
- This product must be installed in accordance with the latest edition of the IEE Wiring Regulations and current Building Regulations. If in any doubt, consult a qualified electrician
- 230V 50Hz
- Do not overload this accessory or subject it to conditions outside its rating
- Please recycle
- For indoor use only

## SPECIFICATION

- 220-240V ~50-60Hz
- 13A
- Minimum mounting thickness 14mm
- Maximum mounting thickness 50mm
- Cut-out 114mm

### USB charger specification

- Output voltage: 5V DC
- Output current: Max. 2100mA
- Caution: the USB sockets are designed for charging portable USB devices only

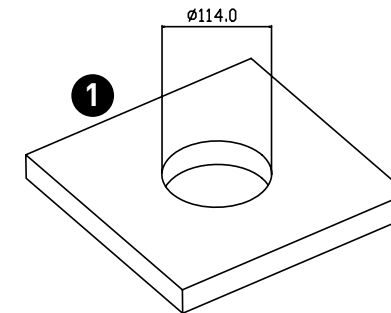
## OPERATION

- On/off switches control the 13A socket only
- USB charger sockets are independent of the 13A sockets and cannot be switched off

## MAINTENANCE

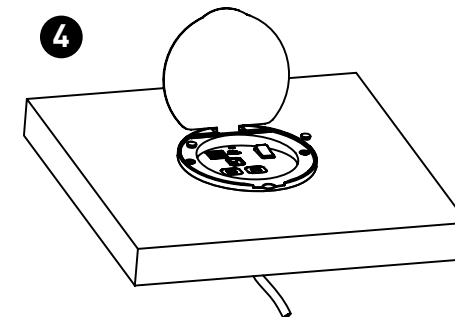
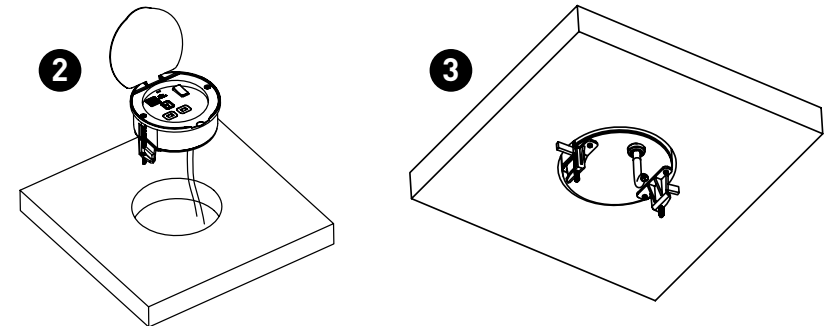
- Ensure that the mains supply is switched off and the circuit fuses are removed or circuit breakers switched off
- To keep the finish of this product, periodically wipe over with a dry soft cloth

## INSTALLATION



1. Mark the cut-out of 114mm diameter allowing a 25mm space around the full circumference of the hole
2. Cut out the 114mm diameter hole in the work surface. **Mounting board thickness must be a minimum of 14mm and maximum of 50mm (fig.1)**
3. Unscrew the fixing screws until the securing lugs are at the bottom of the unit (fig.2)
4. Insert product into the prepared hole (fig.2)

Align the securing lugs under the work surface and tighten the fixing screws (fig.3)



5. Insert the protective screw cap covers and plug the unit into a suitable 13A socket
6. Test for correct operation