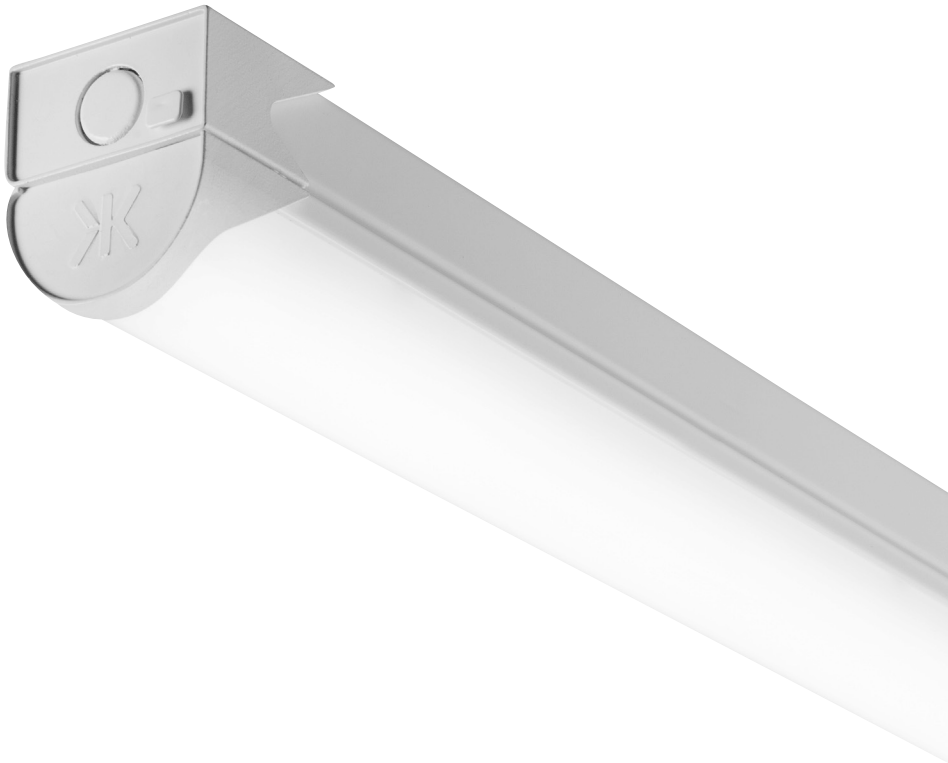


# Knightsbridge

## INSTALLATION & MAINTENANCE MANUAL BATCXX



230V  
50Hz



IP  
20



**ML**  
ACCESSORIES LTD



CE



134

## GENERAL INSTRUCTIONS

**These instructions should be read carefully and retained after installation by the end user for future reference and maintenance.**

**These instructions should be used to aid installation of the following products:**

**BATC4 / BATC5 / BATC5H / BATC6 / BATC6H**

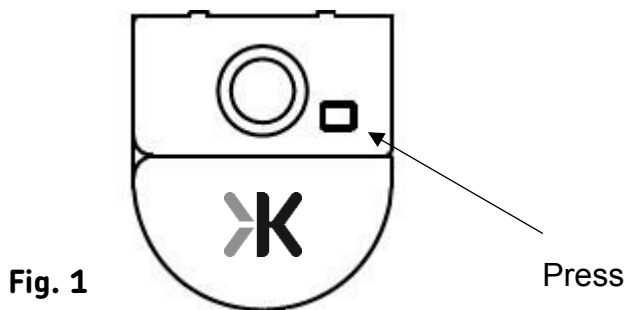
## SAFETY

- This product must be installed in accordance with the latest edition of the IEE Wiring Regulations (BS7671) and current Building Regulations. If in any doubt, consult a qualified electrician
- Please isolate mains prior to installation or maintenance
- Check the total load on the circuit (including when this luminaire is fitted) does not exceed the rating of the circuit cable, fuse or circuit breaker
- Please note the IP (Ingress Protection) rating of this luminaire when deciding the location for installation
- This product is Class I and must be earthed
- This series is IP20 rated

## INSTALLATION

**Note** - If this luminaire is being used in conjunction with an external PIR or sensor, please confirm with the manufacturer of the sensors that they are compatible with LED luminaires.

- Provide power to the required point of installation (refer to BS7671 for correct cabling methods)
- Press the two clips at either end of the luminaire to gain access inside (see Fig. 1)



- Mark the location of the fixing holes and drill the holes ensuring not to infringe with any joists, gas / water pipes or electrical cables. For distance between fixing centres, please see the table below:

PART CODE	DISTANCE (MM)
BATC4	965
BATC5 / BATC5H	1265
BATC6 / BATC6H	1529

- Ensuring correct polarity is observed, carefully wire as shown in Fig. 2

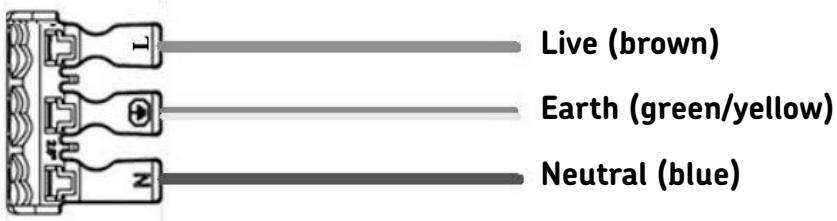


Fig. 2

- Choose the required colour temperature by means of the DIP switch (see Fig. 3)

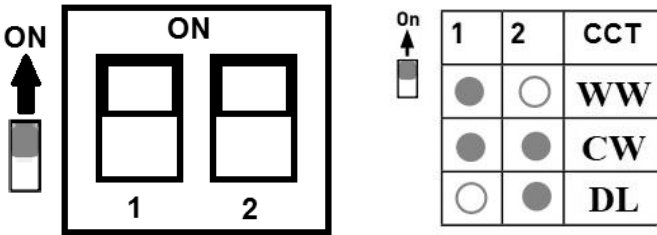


Fig. 3

- Switch on and check for correct operation

## WARNING

This luminaire must be disconnected from the circuit if subjected to any high voltage or insulation resistance testing. Irreparable damage will occur if this instruction is not followed.

## GENERAL

The LED lamps fitted in this product are non-replaceable. The unit should be recycled in the correct manner when it reaches the end of its life. Check local authorities for where facilities exist.

Clean with a soft dry cloth only, do not use aggressive cleaning products or solvents which may damage the product.

This product is non-dimmable.

## WARRANTY

This product has a warranty of 5 years from date of purchase. Failure to install this product in accordance with the current edition of the IEE Wiring Regulations (BS7671), improper use, or removal of the batch codes will invalidate the warranty. If this product should fail within its warranty period it should be returned to the place of purchase for a free of charge replacement. ML Accessories does not accept responsibility for any installation costs associated with the replacement product. Your statutory rights are not affected. ML Accessories reserve the right to alter product specification without prior notice.