

INSTALLATION & MAINTENANCE MANUAL
EX003T / EX004T / EX005T



230V
50Hz



IP
X4

ML
ACCESSORIES LTD



GENERAL INSTRUCTIONS

These instructions should be read carefully and retained after installation by the end user for future reference and maintenance.

These instructions should be used to aid installation of the following products:

EX003T / EX004T / EX005T

SAFETY

- This product must be installed in accordance with the latest edition of the IEE Wiring Regulations (BS7671) and current Building Regulations. If in any doubt, consult a qualified electrician
- Please isolate mains prior to installation or maintenance
- Check the total load on the circuit (including when this product is fitted) does not exceed the rating of the circuit cable, fuse or circuit breaker
- Please note the IP (Ingress Protection) rating of this product when deciding the location for installation
- This product is Class II double insulated
- This product is IPX4 rated

INSTALLATION

Note - If this product is being used in conjunction with an external PIR or sensor, please confirm with the manufacturer of the sensors that they are compatible.

- Provide power to the required point of installation
- Cut a suitable 100mm diameter hole in the mounting surface ensuring not to infringe with any joists, gas / water pipes or electrical cables. Install suitable ducting and a suitable external grille or shutter. The maximum length of ducting to be used is 2m
- Remove the front fascia (see Fig. 1)

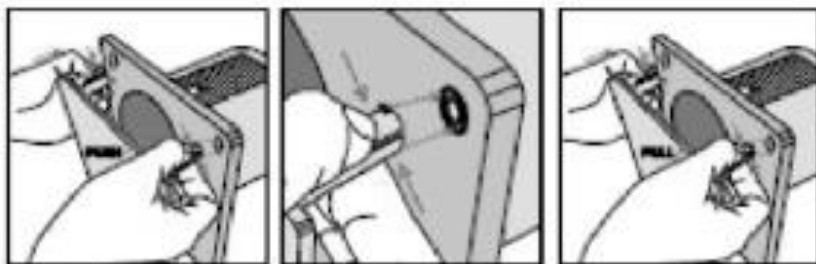


Fig. 1

- Remove the faceplate by removing the screw at the bottom of the product and lifting off
- Mark the location of the fixing holes and drill ensuring not to infringe with any gas / water pipes or electrical cables
- Remove the cable knock-out on the baseplate and guide the mains cable through
- Fix the base to the mounting surface using the fixings provided
- Remove the terminal cover by removing the two screws (see Fig. 2)

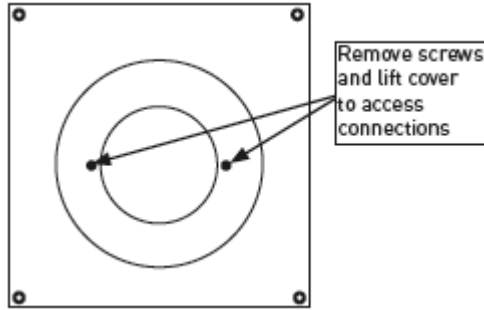


Fig. 2

- Carefully bring the wires into the terminal enclosure and ensuring correct polarity is observed, wire as shown in Fig. 3

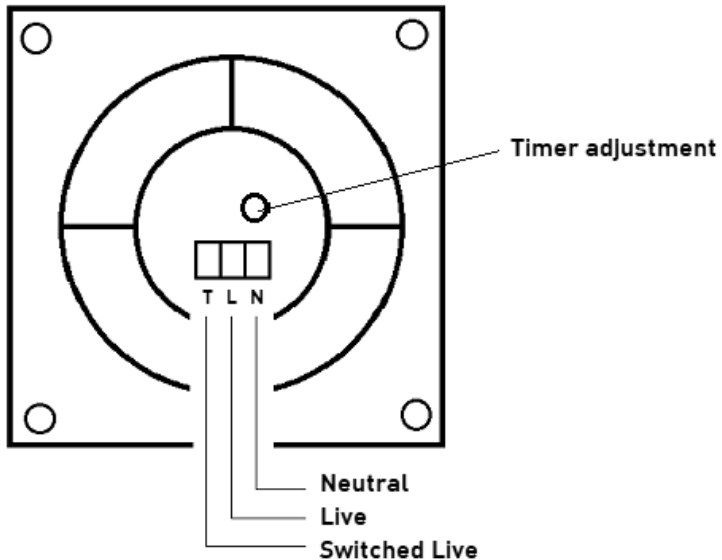


Fig. 3

- Adjust the overrun timer with the aid of a small screwdriver. Turn anti-clockwise to reduce (to a minimum of 2 minutes) and clockwise to increase (to a maximum of 30 minutes)
- Reassemble the terminal cover, faceplate and front fascia
- Switch on and check for correct operation

WARNING

This product must be disconnected from the circuit if subjected to any high voltage or insulation resistance testing. Irreparable damage will occur if this instruction is not followed.

GENERAL

The LED lamps fitted in this product are non-replaceable. The product should be recycled in the correct manner when it reaches the end of its life. Check local authorities for where facilities exist.

Clean with a soft dry cloth only, do not use aggressive cleaning products or solvents which may damage the product.

This product is non-dimmable.

WARRANTY

This product has a warranty of 3 years from date of purchase. Failure to install this product in accordance with the current edition of the IEE Wiring Regulations (BS7671), improper use, or removal of the batch code will invalidate the warranty. If this product should fail within its warranty period, it should be returned to the place of purchase for a free of charge replacement. ML Accessories does not accept responsibility for any installation costs associated with the replacement product. Your statutory rights are not affected. ML Accessories reserve the right to alter product specification without prior notice.