



INSTALLATION & MAINTENANCE MANUAL

**EX1TWH / EX1TBK / EX3TWH /  
EX4TSS / EX5TMB**

## GENERAL INSTRUCTIONS

**These instructions should be read carefully and retained after installation by the end user for future reference and maintenance.**

**These instructions should be used to aid installation of the following products:  
EX1TWH / EX1TBK / EX3TWH / EX4TSS / EX5TMB**

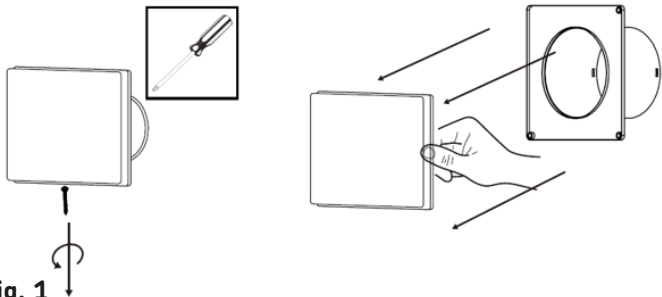
## SAFETY

- This product must be installed in accordance with the latest edition of the IEE Wiring Regulations (BS7671) and current Building Regulations. If in any doubt, consult a qualified electrician
- Please isolate mains prior to installation or maintenance
- Check the total load on the circuit (including when this product is fitted) does not exceed the rating of the circuit cable, fuse or circuit breaker
- Please note the IP (Ingress Protection) rating of this product when deciding the location for installation
- Do not overload this accessory or subject it to conditions outside its rating
- This product is Class II double insulated
- This product is for indoor use only
- This product can be installed onto ceilings and walls
- This product is IP45 rated

## INSTALLATION

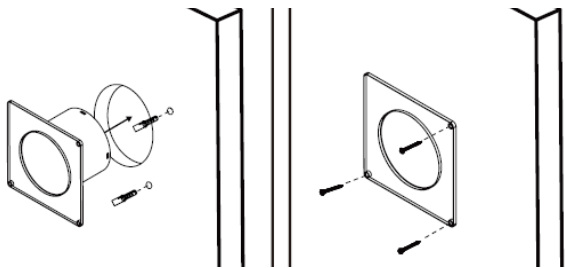
Note – If this product is being used in conjunction with an external PIR or sensor, please confirm with the manufacturer of the sensors that they are compatible.

- Provide power to the required point of installation
- Cut a suitable 100mm diameter hole in the mounting surface ensuring not to infringe with any joists, gas / water pipes or electrical cables. Install suitable ducting and a suitable external grille or shutter. The maximum length of ducting to be used is 2m
- Remove the faceplate by inserting a flat head screwdriver and carefully prising apart (see Fig. 1)



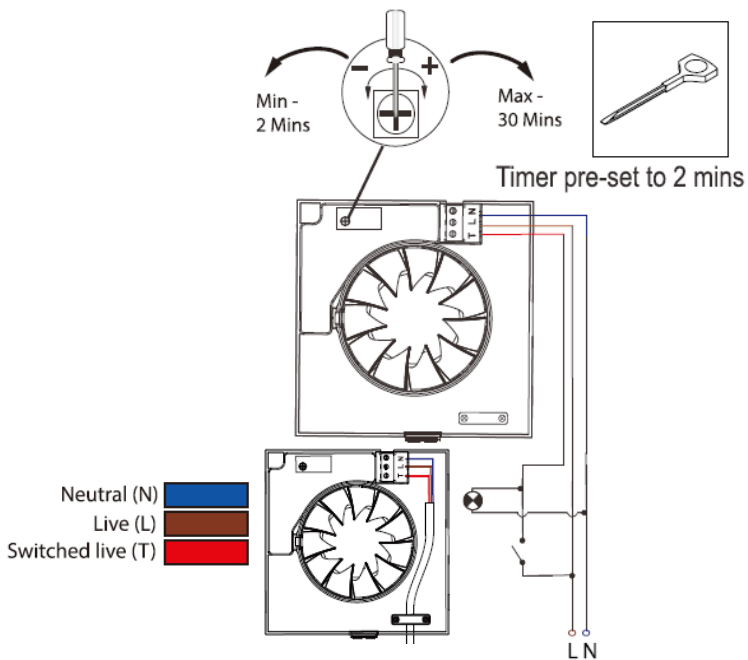
**Fig. 1**

- Mark the location of the fixing holes and drill ensuring not to infringe with any gas / water pipes or electrical cables and fix the base to the mounting surface using the fixings provided (see Fig. 2)



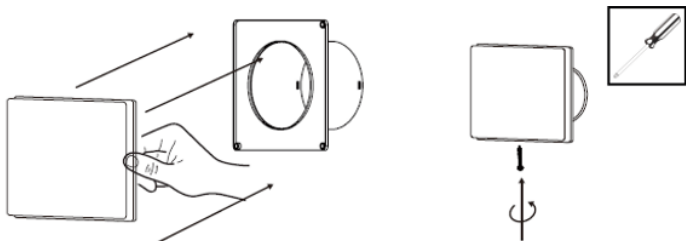
**Fig. 2**

- If required, carefully remove the cable knock-out on the rear of the baseplate and guide the mains cable through. Alternatively, the cable can be surface mounted via the cut-out on the bottom of the product. If surface mounted, the cable must be secured under the cable clamp provided
- Ensuring correct polarity is observed, wire as shown in Fig. 3
- Adjust the overrun timer with the aid of a small screwdriver, turn anti-clockwise to reduce (to a minimum of 2 minutes) and clockwise to increase (to a maximum of 30 minutes (see Fig. 3)



**Fig. 3**

- Check all electrical connections are secure with all exposed copper within the terminal and no loose strands of cable
- Attach the front cover plate and secure with the screw (see Fig. 4)



**Fig. 4**

- Switch on and check for correct operation

## WARNING

This product must be disconnected from the circuit if subjected to any high voltage or insulation resistance testing. Irreparable damage will occur if this instruction is not followed.

## GENERAL

This product should be recycled in the correct manner when it reaches the end of its life. Check local authorities for where facilities exist.

The LED lamps fitted in products EX3TWH / EX4TSS / EX5TMB are non-replaceable.

These products should be recycled in the correct manner when it reaches the end of its life.

Check local authorities for where facilities exist.

This product is non-dimmable.

Clean with a soft dry cloth only, do not use aggressive cleaning products or solvents which may damage the product and invalidate the warranty.

## WARRANTY

This product has a warranty of 3 years from date of purchase. Failure to install this product in accordance with the current edition of the IEE Wiring Regulations (BS7671), improper use, or removal of the batch code will invalidate the warranty. If this product should fail within its warranty period, it should be returned to the place of purchase for a free of charge replacement. ML Accessories does not accept responsibility for any installation costs associated with the replacement product. Your statutory rights are not affected. ML Accessories reserve the right to alter product specification without prior notice.

**SUPPLIED BY:**

**(UK) MANUFACTURER**

**ML ACCESSORIES LTD, UNIT E CHILTERN PARK,  
BOSCOMBE ROAD, DUNSTABLE LU5 4LT,  
WWW.MLACCESSORIES.CO.UK**

**(EU) AUTHORISED REPRESENTATIVE**

**SLV LIGHTING GROUP,  
DAIMLERSTRASSE 21-23,  
52531 ÜBACH-PALENBERG, GERMANY  
EMAIL: EPREL@GROUP.SLV.COM**

MADE IN CHINA

230V  
50Hz

IP45



**ML**  
ACCESSORIES LTD



UK  
CA



106