

LED LITE™
Energy Saving LED



LT10PIRCCT

6/10W LED Tri-Colour Fire Rated Downlight with PIR Sensor

The **6/10W LED Tri-Colour Fire Rated Downlight with PIR Sensor** is a versatile and energy-efficient lighting solution designed for enhanced safety and convenience. Featuring a built-in **PIR motion sensor**, it automatically activates upon detecting movement, reducing unnecessary energy consumption.

This downlight offers **6W and 10W power switching**, allowing users to adjust brightness levels to suit different environments and energy-saving requirements. Additionally, the **tri-colour selection** (Warm White, Cool White, and Daylight) provides customizable lighting options.

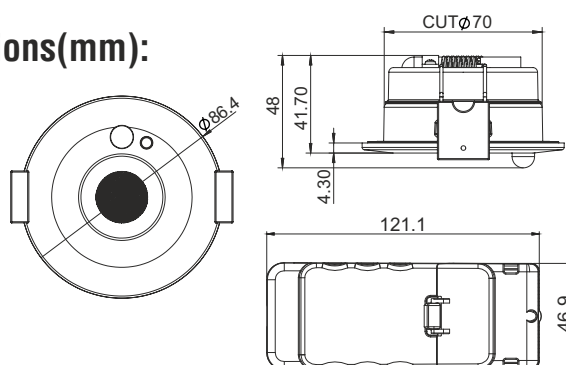
With **Master-Slave connectivity**, it supports the connection of **slave downlights** with a total **maximum load of 200W**, making it ideal for larger lighting setups. Its **fire-rated construction** ensures compliance with safety regulations, making it suitable for both residential and commercial applications.



Features & Benefits:

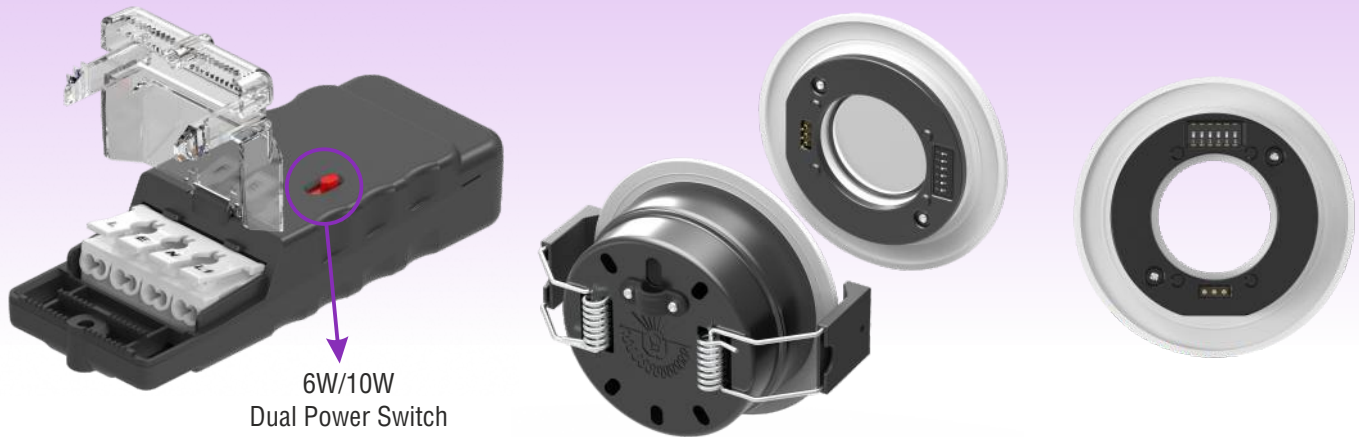
- Dual Power Switchable: 6W / 10W: up to 950lm
- Lumen Output: 6W - up to 620lm / 10W - up to 950lm
- Bezel Integrated PIR Sensor
- Master-Slave connection, up to 200W max. load
- 3 CCT Switch: 3000k - 4000K - 6000K
- Beam Angle: 55°
- IP65 Rated
- CRI>80
- Iron Body Material
- Trailing & Leading Edge Dimmable
- Fire-Rated Protection – Certified for up to 90 minutes of fire resistance
- Solid Joist, I-Joist or Metal-Web Joist Certified
- Slim & Modern Design – Seamlessly blends into ceilings for a sleek, unobtrusive look.
- Interchangeable PIR Bezels available (white included, others sold separately)
- Warranty: 5 Years

Dimensions(mm):



Non-replaceable light source

Non-replaceable control gear



Technical Specifications:

Input Voltage:	220-240 V/AC,50-60Hz	CRI:	>80
Power:	6W / 10W Switchable	Beam Angle:	55°
LEDs:	SMD	IP Rating:	IP65 front
Cut-Out:	Ø70mm	Protection Class:	Class II
CCT Changeable:	3000K/4000K/6000K	Housing:	Iron
Light Output:	6W up to 620lm	Operating Temp.:	-15°C to +40°C
	10W up to 950lm	Dimmable:	Trailing/Leading Edge
Dimensions:	D86 x H42mm	Switch Cycles:	100,000
Energy Class:	E	Warranty:	5 years

PIR Sensor Specifications:

Rated Load:	200W Max.	Detection Angle:	120° Ceiling/Wall
Ambient Light:	30Lux to Daylight	Detection Radius:	4.5m
Time Delay:	10s - 10min Adjustable	Installation Height:	2.2m-3m
Sensitivity:	25%, 50%, 70%, 100%		

