

LTBR18BP - Mini LED Round Bulkhead IP65 9/12/18W CCT with PIR Sensor- Black




Please read these instructions and retain them for future reference.

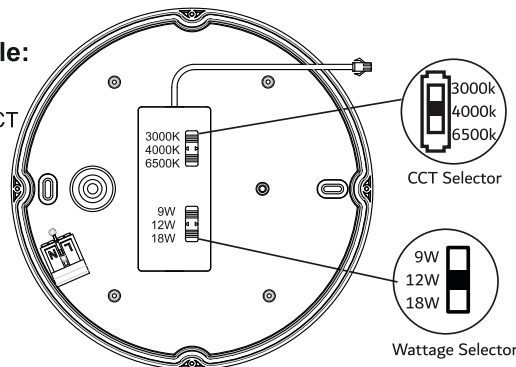
Important information:

It is recommended that this fitting is installed by a qualified electrician ensuring the installation complies with current IEE wiring regulations & local building control.

- This product is designed for connection to a 220-240V mains supply.
- Only mount on level and stable surfaces.
- Ensure sufficient ventilation of the product.
- This product is not suitable for dimming.
- We cannot accept responsibility for any claims arising from a poor installation.
- Always switch off mains supply before installation.
- The light fitting is Class II and does not require an earth connection.

CCT & Power Changeable:

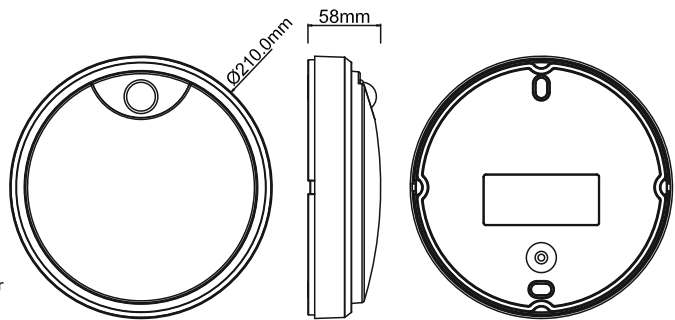
 Switch off the mains supply before changing power or CCT



TECHNICAL SPECIFICATIONS:

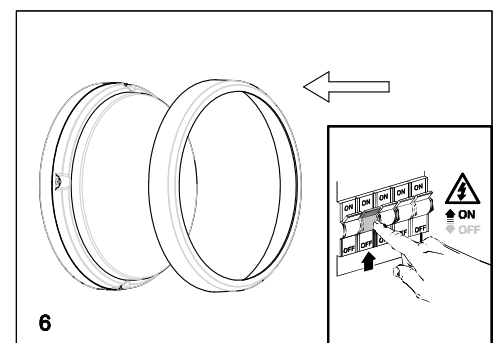
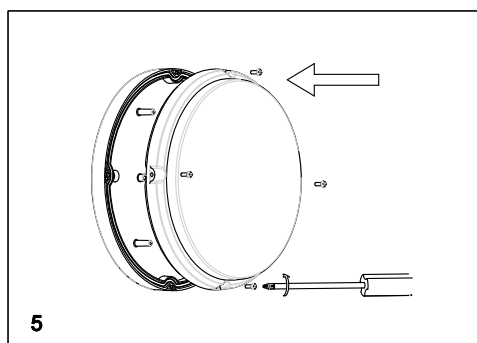
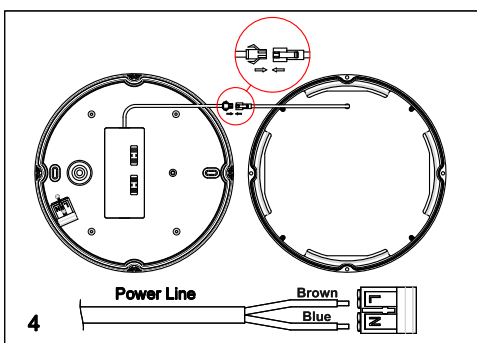
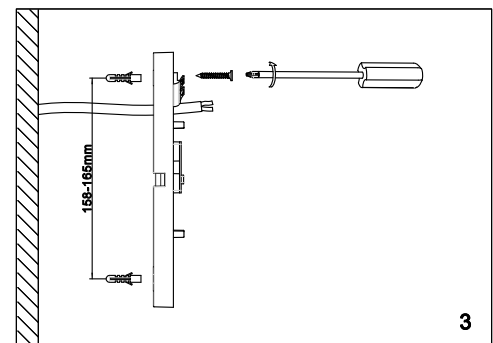
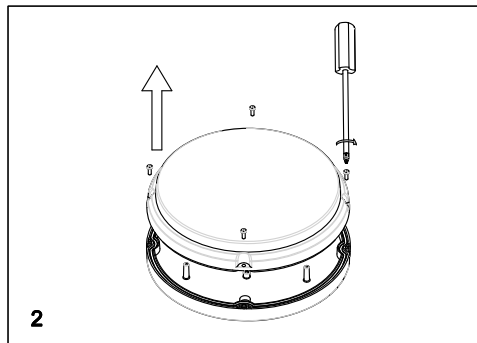
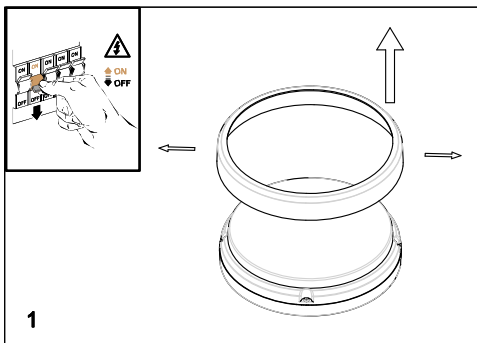
- Input Voltage: 220-240V/AC
- Multi Power: 9W / 12W / 18W
- CCT Changeable (switch): 3000K/4000K/6500K
- Efficacy: >120lm/W
- Light Output: 1100lm/1500lm/2100lm
- CRI > 80
- Beam Angle: 115°
- IP Rating: IP65
- Protection Class: Class II
- Housing: PC Base & Diffuser
- Operating Temp.: -15°C to +40°C
- IK Rating: IK08
- Built-in PIR Sensor
- Warranty: 5 years

Dimensions:

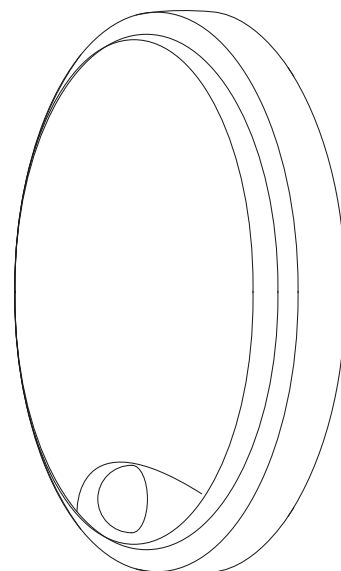


Installation Instructions:

1. Switch OFF the mains supply. Remove the trim of the fitting.
2. Using a screwdriver remove the cover of the fitting.
3. Identify the location and direction of any hidden supply cables or service pipes before drilling fixing holes. Use the two designated points from the fixture as spacing between the holes. Ensure the fitting is level and the wall is capable of holding the weight of the product.
4. Connect the luminaire to the mains supply using the piano terminal block inside the luminaire.
5. Fix the luminaire into the suitable position. Use the round rubber rings around the screws from inside of the luminaire to make it waterproof.
6. Clip the trim back onto the fitting and turn on mains supply ON to test it.



PIR SENSOR Features	
Detection Range	Max 4M
Detection Angle	120°
Time Adjustment	Hold time 5s/90s/5mins/10mins Stand-by period 0s/10s/15min/+∞
Ambient Light	Disabled or 25Lux
Max mounting height	3M



PIR Settings

Stand-by dimming level 20%

Sensitivity	
DIP switch	1
100%	●
50%	○

In this area, movement will be detected and it will trigger the sensor. 100% detection area is also known as strong sensitivity.

Hold-time		
DIP switch	2	3
5s	●	●
90s	○	●
5min	●	○
10min	○	○

The period the light stays at 100% brightness after moving objects leave the detection area.

Daylight threshold		
DIP switch	4	
Disable	●	
25Lux	○	

Activate the light when the ambient brightness is lower than the preset specific lux amount.
If the preset is Disable, the sensor works everytime it detects motion regardless of the ambient brightness.

Stand-by period		
DIP switch	5	6
0s	●	●
10s	○	●
15min	●	○
+∞	○	○

The period of light remaining at low output (stand-by light) before being switched off. When preset is +∞ the light will always remain at low output if no movement is sensed in the detection area.

Factory Settings:

1 - on, 2 - off, 3 - on, 4 - on, 5 - on, 6 - on

