

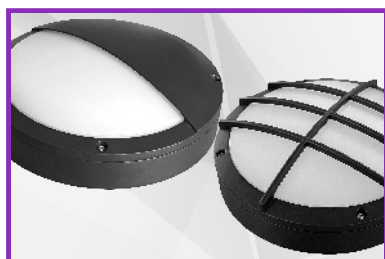


LTDCB18CCT

18W LED Die Cast Bulkhead CCT Changeable Tri Wattage

The new 18W Round Die-Cast Bulkhead is a versatile and modern lighting solution, ideal for both indoor and outdoor use. It features CCT changeable options (3000K, 4000K, 6500K) and power selectability, allowing full customization to suit diverse lighting requirements.

Engineered for convenience, the bulkhead supports plug-and-play emergency and sensor add-ons for effortless upgrades and enhanced functionality. Its robust die-cast construction guarantees durability and long-lasting performance, making it perfect for residential, commercial, and industrial applications. Combining sleek design with advanced features, the LTDCB18CCT bulkhead provides dependable, adaptable, and energy-efficient lighting.



Separate Trim Bezel Options Available
Eyelid (LTDCBET) & Grill (LTDCBGT)

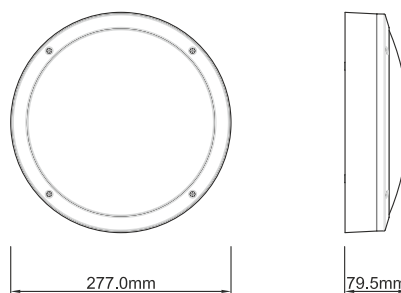


Quick Plug-in & Screwless
Emergency Kit (LTEM) and
Microwave Sensor (LTMS) Available

Features & Benefits:

- Robust Die-cast Aluminium Build
- Tri Wattages: 9W/14W/18W
- CCT Changeable: 3000K/4000K/6500K
- Easily Accessible CCT & Power Changeable Switches
- Up to 1800lm
- IP65 Rated
- Hinged LED Gear Tray for Easy Access
- Central and Two Side Conduit Cable Entries
- Besa Box Compatible
- Push Fit Terminal Block
- Quick Plug-in & Screwless Emergency Pack (LTEM) and Microwave Sensor with Corridor Function Available (LTMS) - sold separately
- Eyelid and Grill Trim Bezel Options Available – sold separately
- Warranty: 5 Years

Dimensions(mm):



Technical Specifications:

Input Voltage:	220-240 V/AC, 50-60Hz	CRI:	>80
Power:	18W/14W/9W Switchable	Beam Angle:	120°
LEDs:	SMD 2835	IP Rating:	IP65
CCT Changeable:	3000K/4000K/6500K	Protection Class:	Class II
Light Output:	1800lm/1400lm/900lm	Housing:	Die-Cast Aluminium
Power Factor:	>0.7	Operating Temp.:	-15°C to +40°C
Dimensions:	(Diam.)Ø277x(D)79.5mm	IK Rating:	IK10
Efficacy:	>150lm/W (4000K)	Warranty:	5 Years



Non-replaceable
light source



Non-replaceable
control gear