



## Emergency Inverter for LTSP70 Panel Lights

The product package contains the following:

- Emergency Light Unit
- 5500mAh 32650/6.4V Li-FePo4 Battery
- Pre-wired Output Connection Plugs
- Pre-wired Status LED
- Instruction Manual

Please read this Manual prior to the installation of the LTEM70. The LTEM70 emergency inverter is designed to be used with the LTSP70 Panel Lights.

The housing of the LTEM70 emergency inverter includes the PCB, output connection plugs and the Li-FePO4 battery.

### Operating principle:

The LTEM70 emergency pack charges when AC power is present. When fully charged, the circuit will protect the battery from over-charging and the emergency pack will enter stand-by mode. As soon as the AC power fails the battery will supply power to the LED panel.

### Technical Specifications:

<b>Working Voltage</b>	220-240V/AC 50/60Hz	<b>Battery Type</b>	32650 Li-FePO4 6.4V 5500mAh	<b>Dimensions</b>	L213*W95*H40mm
<b>Power Factor</b>	0.39	<b>Charging Time</b>	24h	<b>Safety Classification</b>	Class I
<b>Power Consumption</b>	5W Charging 1W at Full Battery	<b>Emergency Time</b>	≥180 minutes	<b>Installation Hole Size</b>	100mm
<b>Deep Discharge Protection Voltage</b>	5.2V±0.2V	<b>IP Rating</b>	IP20	<b>Working Temperature</b>	0°C - +40°C
<b>Overcharged Protection Voltage</b>	7.3V±0.2V	<b>Luminous Flux</b>	850Lm	<b>Warranty</b>	2 years
<b>LED Output Power</b>	7.4W	<b>Weight</b>	0.59kg	<b>Body Material</b>	Polycarbonate

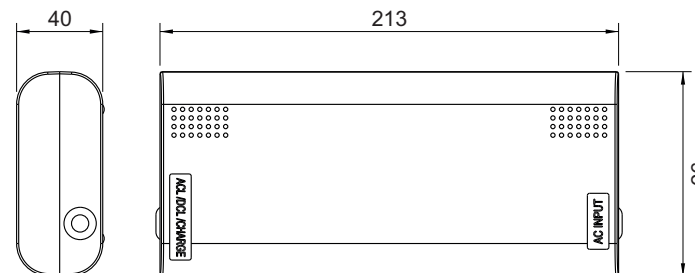
### Installation Standards:

- The installation of the LTEM70 must be done by a certified electrician according to the EN60598 part 1 and 2-22 as well as additional local standards (see basic wiring instructions on Page 2).
- The installation and the wiring instructions in this manual must be followed or the LTEM70 may not function as intended.
- The status LED should be positioned in such a way to be easily visible under all circumstances to ensure quick and convenient functionality check.
- The LTEM70 should be installed indoors (stairs, corridor, ceiling, etc.) and it is not for outdoor use.

### Battery Maintenance:

- Initial battery charge must be for a minimum of 24 hours before testing.
- To achieve best performance the LTEM70 must be properly maintained. The LTEM70 should be tested fully by switching into emergency mode regularly in accordance with local testing regulations to check emergency operation time (according to battery capacity). Any warranty claim must be accompanied by documentation which records the dates of this maintenance procedure and signed by maintenance personnel.

### Dimensions(mm):

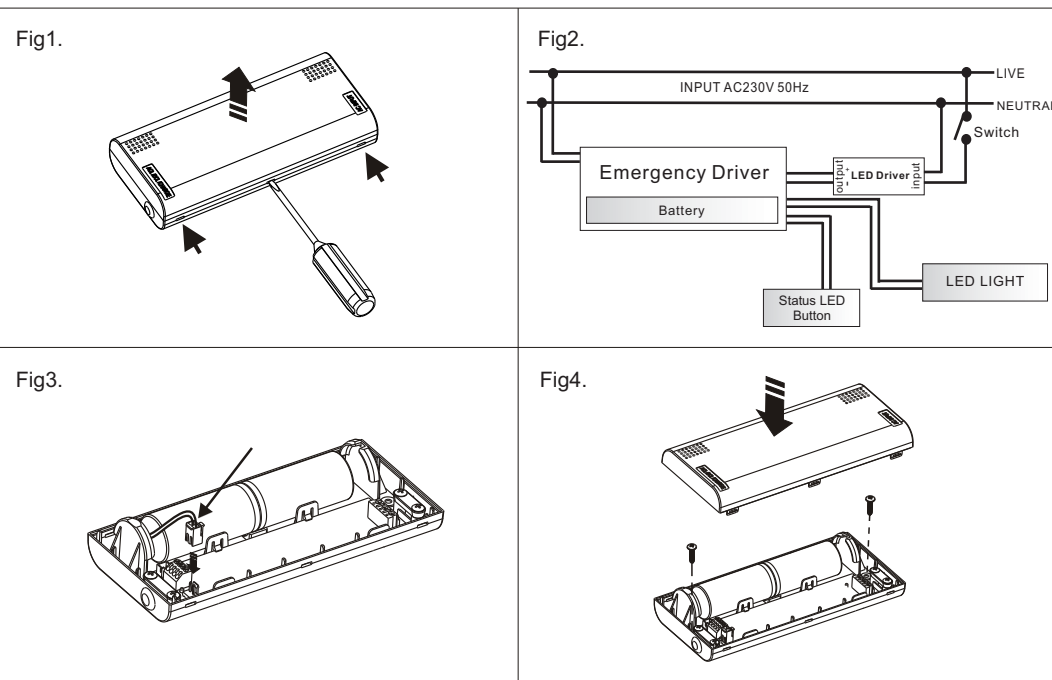


### Emergency Inverter for LTSP70 Panel Lights

### Installation and Wiring Instructions:

Before the installation process starts, ensure the mains power supply is turned off.

1. Using a flathead screwdriver, push in the 3 click buttons and remove the protective cover. (Fig1)
2. Connect the emergency inverter according to the wiring diagram below observing the correct polarity. Connect the emergency inverter to the mains power supply.(Fig2)
3. Insert the battery cable into the PCB.(Fig3)
4. Clamp the mains cable in position & replace the protective cover.(Fig4)



5. When first connecting to AC power, check if the LED lights works normally - the RED indicator light will be ON until the battery is fully charged.
6. Once the battery is charged the Green indicator light will be ON.
7. Turn the switch to the LED panel ON and OFF to check the correct function of the panel.
8. Test the emergency mode:
  - a. When the battery is fully charged and the green LED in ON, turn the mains power off. The LED panel light will turn on in emergency mode.
  - b. Isolate the emergency pack AC power - the LED lamp will be in emergency mode and the Green/Red indicator light will be OFF.

Once all of the above steps have been followed and are correct the installation is complete.

Luminaire Ref/Location -----	In Case of difficulty, contact the Installation Engineer: ----- Tel: -----									
Full Recharge Time 24 Hours	Duration 3 Hours					Lamp Type - LED				
<b>ROUTINE TEST RECORD</b>										
	Year 1		Year 2		Year 3		Year 4		Year 5	
Monthly Test	Signed	Date	Signed	Date	Signed	Date	Signed	Date	Signed	Date
Functional										
Functional										
Functional										
Functional										
Functional										
Functional										
Functional										
Functional										
Functional										
Functional										
Functional										
Functional										
Three Hour										