

LTFL10 - 10W LED Floodlight CCT Changeable

IP65    220-240V

Please read these instructions before commencing installation & retain them for future reference.

Important information

It is recommended that floodlights are installed by a qualified electrician ensuring the installation complies to current IEE wiring regulations & local building control.

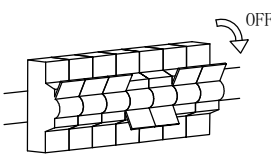
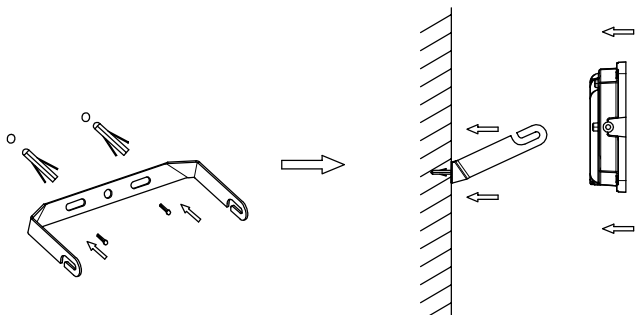
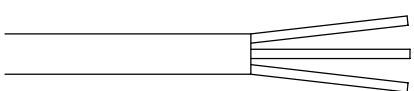

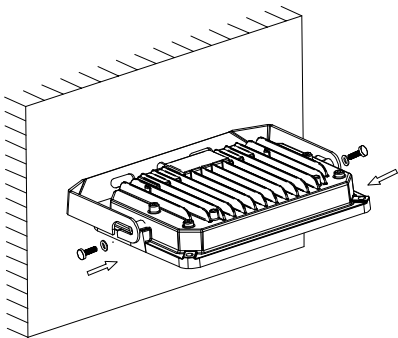
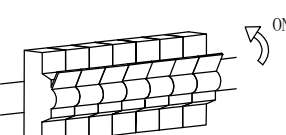
- These products are designed for connection to a 220-240V mains supply.
- Any broken or damaged parts should be replaced as soon as possible.
- We will not accept responsibility for any claims arising from a poor installation.

SPECIFICATIONS:

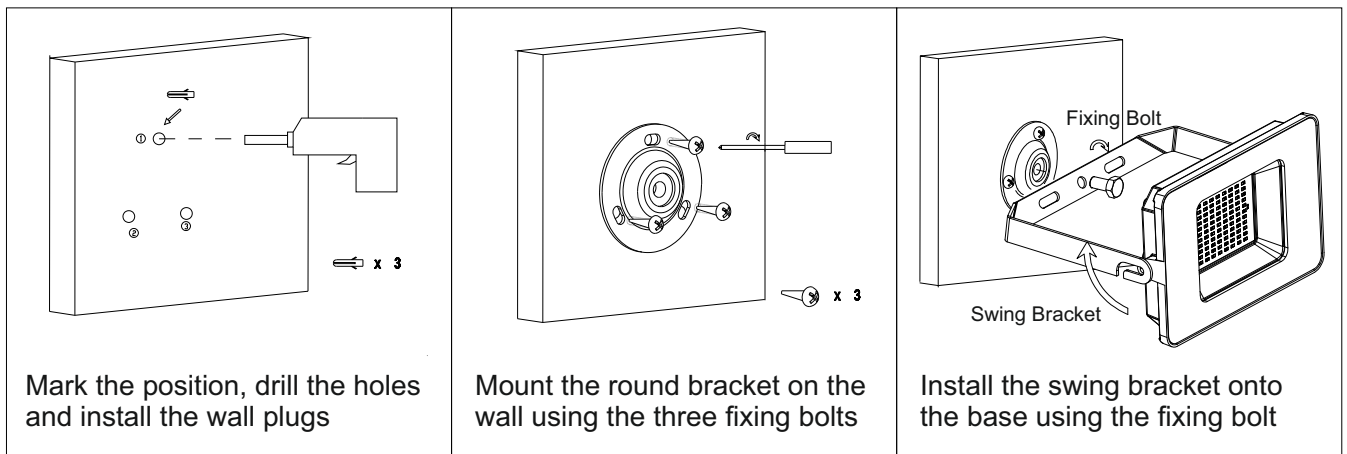
- **Voltage range:** 220-240 V/AC
- **Frequency:** 50/60 Hz
- **Power:** 10W
- **Lumen Output:** 1000lm \pm 5%
- **CCT Changeable:** 3000K/4000K/6000K
- **CRI**>80
- **Protection against electric shock:** Class I. Requires earth connection.
- **Ingress Protection:** IP65
- **Slide-in bracket and additional round bracket for easy installation**
- **Material:** Die cast Aluminium body with tempered glass diffuser
- **Ambient temperature range:** -20°C to +40°C

INSTALLATION INSTRUCTIONS:

 Always switch off mains supply before servicing.

<p>1.</p>  <p>Turn off mains power.</p>	<p>2.</p>  <p>Mark the holes position and mount the bracket on the wall. Slide the floodlight into position.</p>	
<p>3.</p>  <p>Live (L) - Brown Neutral (N) - Blue Earth (E) -  Yellow/Green Input 220-240V/AC, 50/60HZ</p> <p>Terminate loose ends of wire to an appropriate IP Rated junction box or similar, ensuring polarities are observed.</p>	<p>4.</p>  <p>Use the screws provided to fix the floodlight into the bracket.</p>	<p>5.</p>  <p>Turn on mains power and test the floodlight.</p>

Installing the Additional Bracket:

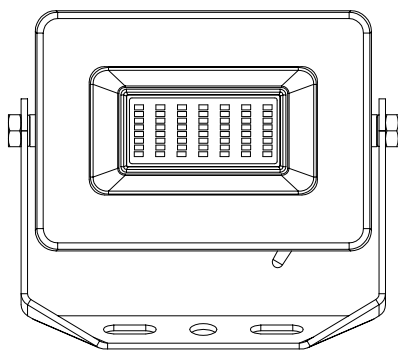


WARNING: Ensure all items and screws are secure and fitted correctly.

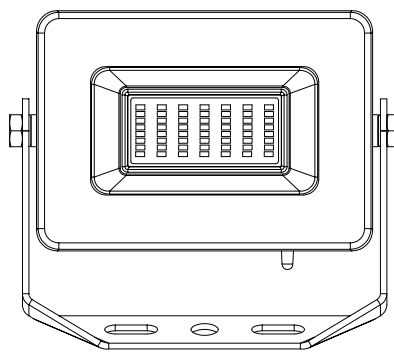
- This floodlight is not dimmable.
- Floodlights should not be connected in series.

Changing Colour Temperature:

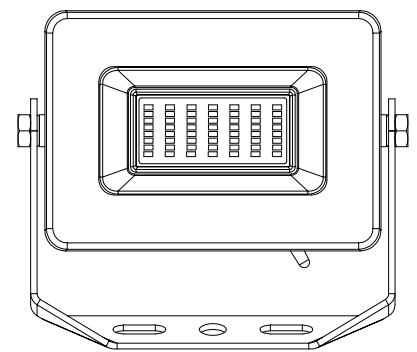
Use the toggle switch at the bottom of the floodlight to change the colour temperature:



Left Position: 3000K



Middle Position: 4000K



Right Position: 6000K

DIMENSIONS(mm):

