

LEDLITE™ Installation Sheet

LTFL810 - 80/100W LED Floodlight Power Selectable & CCT Changeable with Microwave Sensor & Remote Control

IP65    220-240V

Please read these instructions before commencing installation & retain them for future reference.

Important information

It is recommended that floodlights are installed by a qualified electrician ensuring the installation complies to current IEE wiring regulations & local building control.

- These products are designed for connection to a 220-240V mains supply.
- Any broken or damaged parts should be replaced as soon as possible.
- We will not accept responsibility for any claims arising from a poor installation.

SPECIFICATIONS:

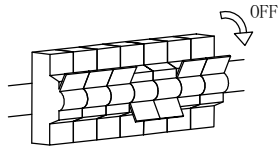
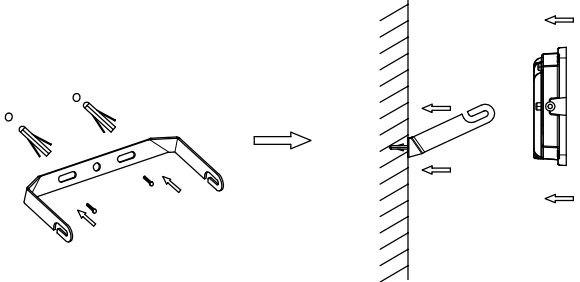
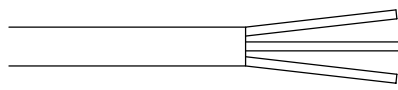

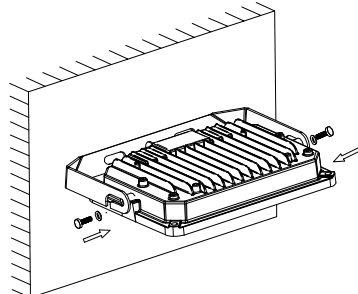
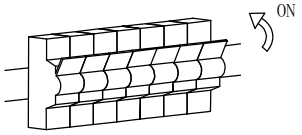
- **Voltage range:** 220-240 V/AC
- **Frequency:** 50/60 Hz
- **Power Selectable:** 80W / 100W
- **Lumen Output:** 8000lm/10000lm \pm 5%
- **CCT Changeable:** 3000K/4000K/6000K
- **CRI>80**
- **Protection against electric shock:** Class I.
Requires earth connection.
- **Ingress Protection:** IP65
- **Slide-in bracket and additional round bracket**
for easy installation
- **Material:** Die cast Aluminium body with tempered glass diffuser
- **Operating temperature range:** -20°C to +40°C

SENSOR & REMOTE SPECIFICATIONS:

- **Sensor Type:** Microwave Sensor
- **Emission Frequency:** 5.8Ghz
- **Detection Angle:** 120°
- **Detection Range:** 1 - 7 metres adjustable
- **Delay Time:** 10sec - 2min adjustable
- **Modes:** 3 modes adjustable
- **Manual Override Facility**
- **Power Consumption:** <0.5W
- **Transmitted Power:** <0.1W
- **Remote Control Range:** Up to 6m
- **Remote Battery Type:** CR2025

INSTALLATION INSTRUCTIONS:

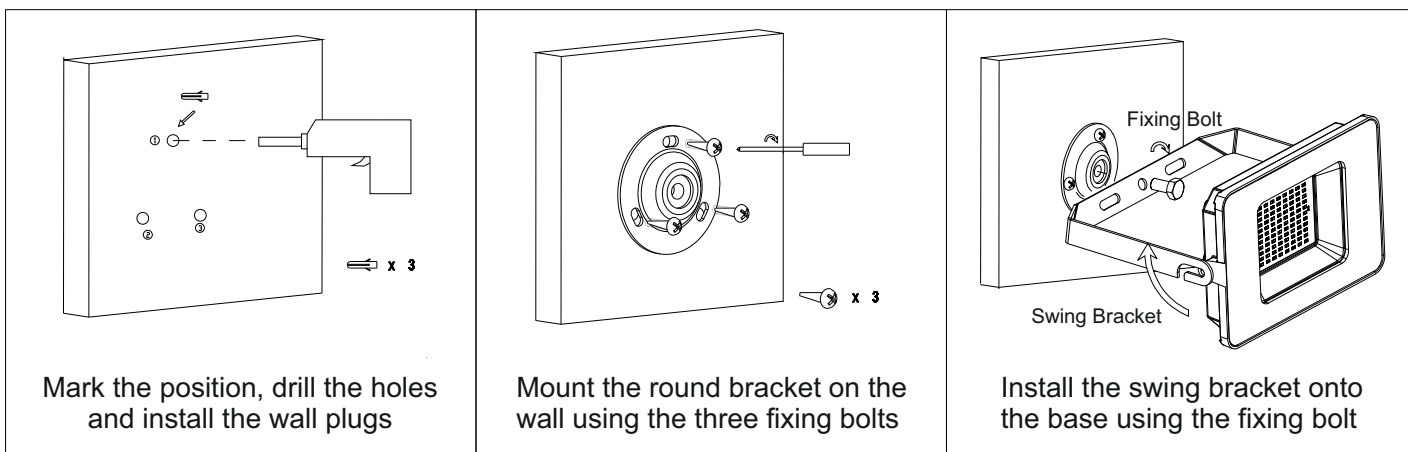
 Always switch off mains supply before servicing.

<p>1.</p>  <p>Turn off mains power.</p>	<p>2.</p>  <p>Mark the holes position and mount the bracket on the wall. Slide the floodlight into position.</p>
<p>3.</p>  <p>Live (L) - Brown Neutral (N) - Blue Earth (E) -  Yellow/Green Input 220-240V/AC, 50/60HZ</p> <p>Terminate loose ends of wire to an appropriate IP Rated junction box or similar, ensuring polarities are observed.</p>	<p>4.</p>  <p>Use the screws provided to fix the floodlight into the bracket.</p> <p>5.</p>  <p>Turn on mains power and test the floodlight.</p>

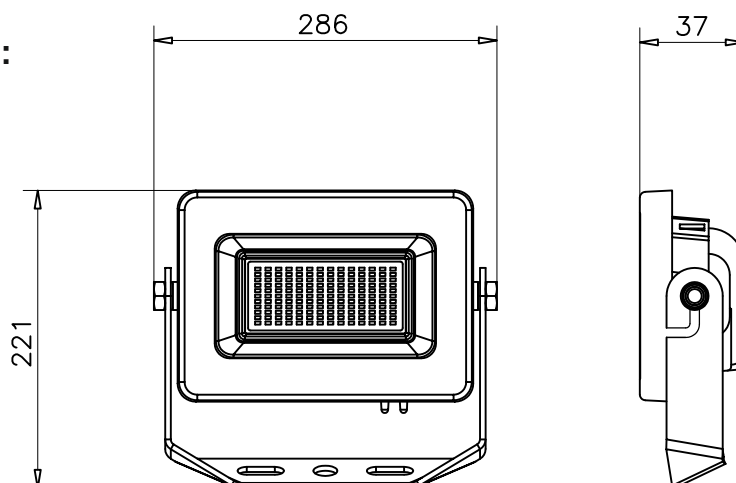
WARNING: Ensure all items and screws are secure and fitted correctly.

- This floodlight is not dimmable.
- Floodlights should not be connected in series.

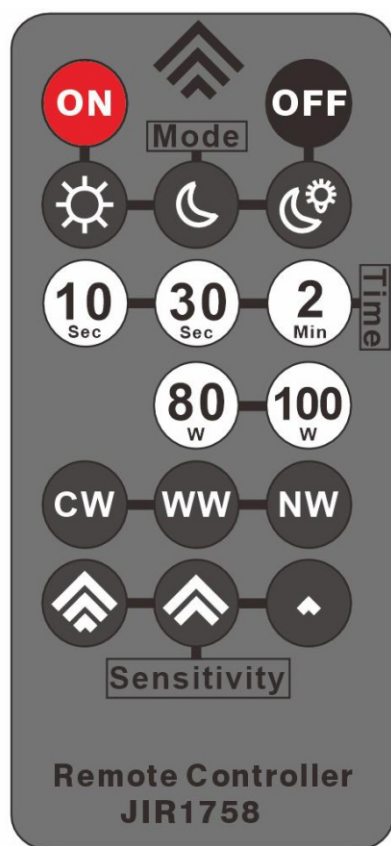
Installing the Additional Bracket:



DIMENSIONS(mm):



Remote Control Functions



ON Button: Turn ON the light in continuous Light Mode.

Manual Override the other modes.

OFF Button: Turn OFF the light

Sensor Modes (Left to right):

- Whole day working mode. The sensor will function day and night.
- Night working mode. The sensor will only function at night.
- Photocell Mode. The fixture will light all night (when is dark). Sensor is disabled in this mode.

Delay Time Adjustment

Power Setting Buttons

CCT Changing Buttons:

- CW - 6000K
- WW - 3000K
- NW - 4000K

Sensitivity Adjustment (Range): 7m, 5m, 3m

Remote Control Setup:

- Pull plastic protection from battery compartment to activate the remote control.
- Factory Default Settings:
 - Range (sensitivity): 100% (full range).
 - Time (duration): 10 seconds.
 - Light Sensitivity: Default continuous light all day.
- Changing the Settings:
 - Point the remote towards the fitting within 6m metres.
 - Select the adjustment mode required and press that button.
 - The light will then flash once acknowledging the new setting.
 - Repeat the same for other adjustments as needed.

All buttons on remote control have a memory function; after setting the fixture will keep working on the mode it was set.