



## LTFLPWIFI

Smart LED WiFi  
PIR Floodlight CCT 10/20W



SCAN THE QR CODE to download the APP or search "Smart Life" on your App Store or Android Market by Mobile Phone.

Works with Amazon Alexa and Google Assistant



Please read these instructions and retain them for future reference.

### Important information

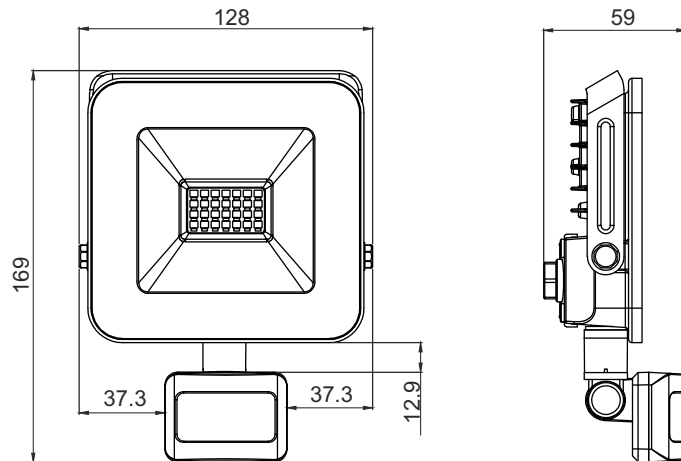
It is recommended that the floodlights are installed by a qualified electrician ensuring the installation complies with current IEE wiring regulations & local building control. These products are designed for connection to a 220-240V mains supply. Always switch off mains supply before installation.

### Specifications:

- App Control: 2.4Ghz WiFi using Smart Life APP
- Compatible with Amazon Alexa & Google Home
- APP Light Control: CCT, Dimming, ON/OFF
- APP PIR Control:
  - Detection Distance (up to 8m)
  - Lux Level (Ambient Light)
  - Light Duration
  - Stand-by Light
  - Stand-by Light Duration
  - Event Records
  - Link to other Smart devices through Automation
- Dimmable: Yes, through the APP (10-100%)
- IP Rating: IP65 Floodlight / IP44 Sensor
- Heatsink Material: Aluminium
- Built-in Junction Box
- Lifetime: 25000hours

- Voltage: 220-240V
- Frequency: 50/60Hz
- Current: 150mA
- Driver Type: IC Driver
- Power: 10W (3000K and 6500K) up to 20W (4000K)
- LED Chip: 2835 SMD
- Lumen Output: 900-1000lm (3000K/6500K) 1800lm (4000K)
- Colour Changeable: 3000-6500K
- CRI: >70
- Power factor: >0.9
- Beam Angle: 110°
- Operating Temp.: -20°C~ +40°C
- Dimensions: 128x169x59mm
- Weight: 290g

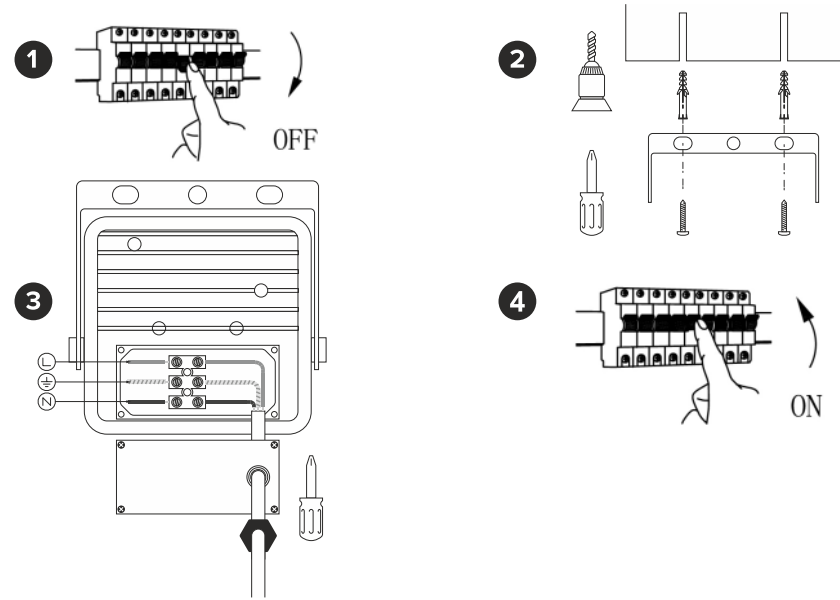
### Dimensions(mm):



### Installation:

**CAUTION** – Always switch off mains supply before servicing.

1. Shut OFF power.
2. Before installing the product check which plugs and screws are best suited for the intended surface. Mount the bracket on the wall. Max. recommended installation height is 5m.
3. Open the cover of the junction box. Connect cable wires ensuring the Live, Neutral and Earth polarities are observed. Close the cover and tighten the screws firmly.
4. Connect the fitting to its bracket and turn ON power to test the luminaire.



### Smart Life APP Instructions:

#### NO.1 Download the Smart Life APP

Scan the QR code present on the packaging box or in the instructions to download the APP. You can also search "Smart Life" in either App Store or Google Play to install the APP.

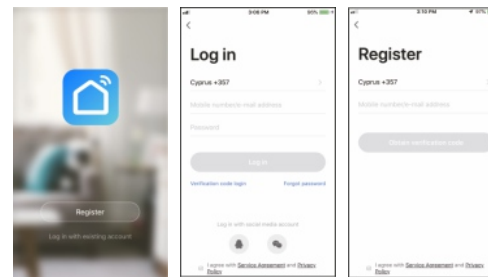


**Note:** This item works only on a 2.4GHz WiFi network, not on a 5GHz WiFi network. Please consult the manual of your router for settings.

#### NO.2 Login/Registration

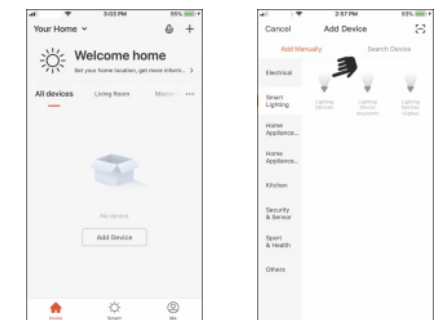
After downloading the free Smart Life App from Apple Store or Play Store create a new account by following these steps:

1. Press "Login"
2. Select Your country code, enter the e-mail address or phone number you want to use to login and press "Obtain verification code"
3. Enter the code received by e-mail or phone, set your personal password and press "Completed". Now you can access the pages for the creation of your Smart Home.



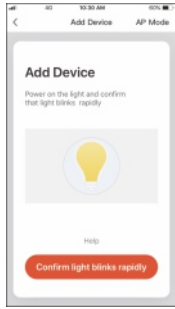
#### NO.3 Add New Device

To add your new device open Smart Life APP on "My Home" page, press "+" in the upper right corner and then "Lighting Devices". The Application offers two different procedures to add your device: EZ and AP mode. Please use the default EZ mode. If it fails, please try again or use AP mode.

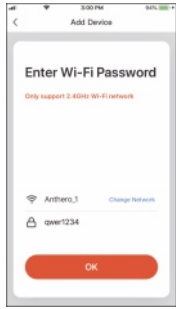


**NO.4 Add New Device - EZ Procedure**

Make sure your new device is in EZ mode, otherwise reset it by switching on light and, after 10 seconds, switching it off then on 3 times. The light will start blinking quickly (about 3 times per second). After resetting the device:  
 1. Press "Confirm light blinks rapidly" (Pic.1). A new page will open (Pic.2).  
 2. Enter the password of the WiFi network you are connected to and press "OK" to connect. The WiFi network supported is 2.4Ghz (disable the 5Ghz WiFi network).



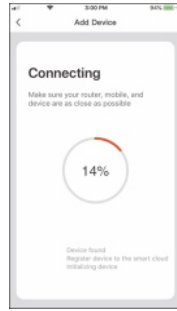
Pic.1



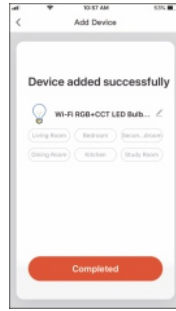
Pic.2

**NO.5 Add New Device - EZ Procedure**

When connecting the device, you can see the connection status as shown in Picture 3. Once connected, a page will open as shown in Picture 4. Select the location of the device in your smart home and press "Completed" to access the control page of your new device.  
 Now your new light is ready to be controlled via the APP, even remotely.



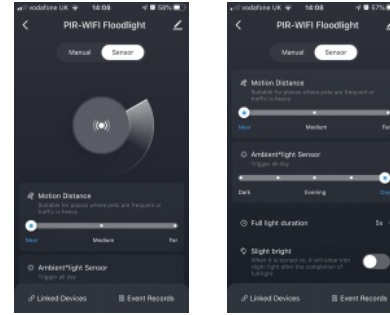
Pic. 3



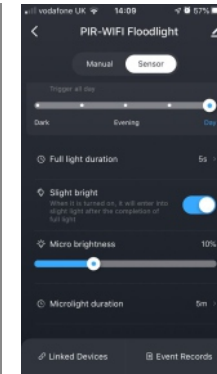
Pic. 4

**NO.10 PIR Sensor Control**

On the Sensor control page you can do the following:  
 • Turn the sensor on or off.  
 • Change the detection distance (Motion Distance).  
 • Change Lux level by moving the " Ambient Light Sensor" slider.  
 • Change the Light duration after the sensor detects movement.  
 • Turn on or off the stand-by light (Slight Bright).



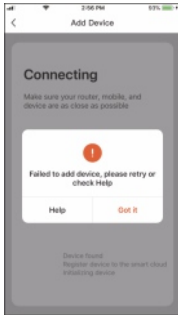
**NO.11 PIR Sensor Stand-By Light**



When the "Slight Bright" light is activated, the floodlight will enter in stand-by light mode after the completion of the full light.  
 Here you can change the followings:  
 • Turn the stand-by light on or off.  
 • Change stand-by light brightness  
 • Change stand-by light duration

**NO.6 Connection Failed**

If the Application shows the page as in Picture 5, it means that the light connection has failed.  
 By pressing "Got it" you can try to connect it again in EZ mode or select the AP Mode by pressing on the top right as shown in Picture 6.



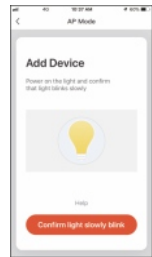
Pic. 5



Pic. 6

**NO.7 Add New Device - AP Procedure**

To connect the device in AP mode switch the light on and, after 10 seconds, switch it off then on 3 times until it flashes quickly (about 3 times per second). Continue switching the light off then on 3 times and it will start flashing slowly (about once every 3 seconds). At this point press "Confirm light slowly blink" (Pic.7), enter the password of the WiFi network you are connected to, press "OK" (Pic.8) and you will open the page as shown in Picture 9. By pressing "Go connect" your mobile phone will take you to the WiFi Setting page. Select the "Smartlife-XXX" network, go back to the Smart Life APP and your new device will connect correctly.



Pic.7



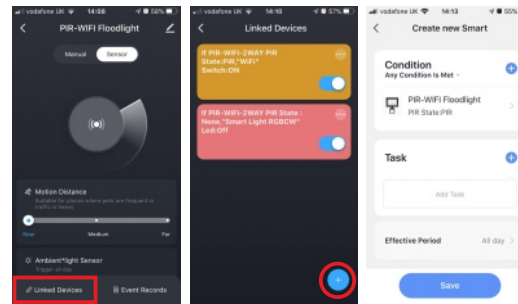
Pic.8



Pic.9

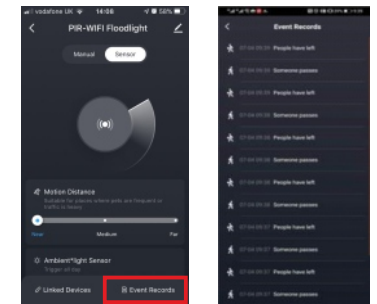
**NO.12 Linking Smart Devices**

You can link other Tuya WiFi Smart Devices with the PIR Sensor creating different scenarios with lights interactions.  
 By pressing the "Linked Devices" at the bottom left corner of the page and then "+" at the bottom right on the next page, you can add tasks to turn ON or OFF additional devices based on the condition of the PIR sensor.  
 You can change the task working time by pressing "Effective Period" at the bottom of the page.

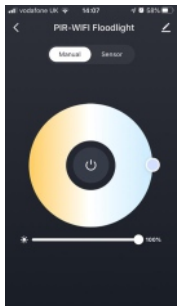


**NO.13 Event records**

Press the "Events Records" at the bottom right of the page to access the sensor records showing when someone triggers the PIR sensor or when they leave the area.

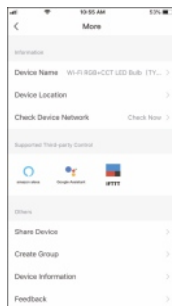


**NO.8 Device Control**



After connecting the device, the control page will be opened automatically.  
 Here you can do the following:  
 • Turn the light on or off.  
 • Change the colour of the white, from warm white to cool white.  
 • Dim the light.

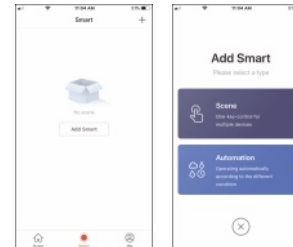
**NO.9 Device Menu**



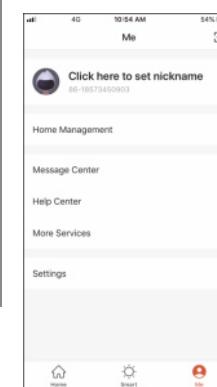
By pressing on the menu symbol at the top right you can:  
 • Change the name of your device.  
 • Select the location of the device in your home.  
 • Check how to connect it to your voice control device (Google Home or Amazon Alexa).  
 • Share control of the device with other family members or friends.  
 • Create a group of multiple devices so that you can control them together.  
 • Update the device firmware.  
 • Remove the device.

**NO.14 Creation of Scenarios and Automations**

You can create an infinite number of Scenarios and Automations enabling other devices to interact with each other.  
 By pressing "Smart" at the bottom centre of the home page and then "+" in the upper right corner, you can choose whether to add a new scenario or a new automation.  
 • A Scenario is a set of commands assigned to the various devices that will be activated simultaneously whenever you click on the created scenario or in the days and hours programmed.  
 • An Automation is the execution of a specific command given to a device when a specific condition has been activated.



**NO.15 Profile**



"Me" is the page where you can change your settings:  
 1. Your Profile.  
 2. Home Management.  
 3. Message Centre.  
 4. Additional services, such as the list of devices that can be associated with the application (Google Home, Amazon Alexa) in order to control your home via voice commands.  
 5. Settings to activate push notifications and other features.

**NO.16 Sharing Devices**

You can share your devices with your family and friends who downloaded the Smart Live APP and have a registered account. The people you share your devices with will be able to control them, but they will not be able to add new devices to your home or delete any devices shared with them.  
 You have two different ways to share your devices:

- Enter the page of your profile, press "Home Management" and "Share Devices" to enter the page where you can select the devices you want to share. Enter the e-mail address used in the Smart Life APP by the user you want to share the devices with. If you want to delete sharing with a user, place your finger on the user's name, drag to the left and then press "Delete".
- Enter the menu of the device you want to add, press "Shared Devices" and enter the e-mail address used in the Smart Life APP by the user you want to share the devices with. If you want to delete sharing with a user, place your finger on the user's name, drag to the left and then press "Delete".