

LTSF30RGBW

Smart Floodlight 30w RGBW - Multi Function

IP66 Ⓢ 220-240V ⓘ Bluetooth



Please read these instructions before commencing installation & retain them for future reference.

Important information

It is recommended that floodlights are installed by a qualified electrician ensuring the installation complies to current IEE wiring regulations & local building control.

- These products are designed for connection to a 110-240V mains supply.
- We will not accept responsibility for any claims arising from a poor installation.

Installation Procedure

- Always switch off mains supply before servicing.
- Ensure 220-240V supply voltage.
- Fix the floodlight in a suitable position.
- Floodlights are suitable for external use, but must not be submerged in water.
- Ensure correct wiring connection is made using correct size cables and IP67 or IP68 rated boxes for external use.
- For externally mounted fittings LEDLite recommends electrical connection to an RCD/RCBO protected lighting circuit.

SPECIFICATIONS:

Illumination Angle	90°
Dimming	PWM
Frequency Response	40HZ-18KHZ,
Signal to Noise Ratio(SNR)	>80dBm,P=1W;A-weight
Control Method	Bluetooth APP
Bluetooth Distance	>10m,Straight line distance no obstacles
Working Temperature(°C)	-20° ~ 60°C
Storage Temperature	-40° ~ 70°C
Input Voltage (V)	220-240V / 50-60HZ
Input Power (W)	30W
Efficiency	>82%
Luminous Flux (Lm)	2000lm (White)
CRI	>80
Color Temperature(CCT)	6500lm
Light Decay	<10%, T=25°C; RH=90%; H=20000

DIMENSIONS:



SCAN THE QR CODE to download the APP:



iOS



Android

or search "Bowlight" on your App Store or Android Market by Mobile Phone.

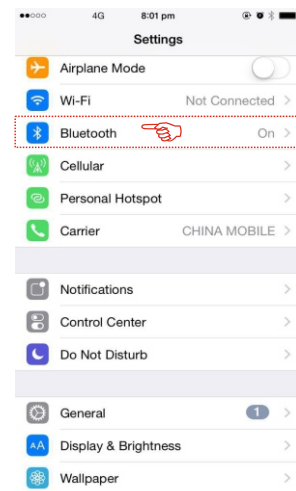


APP CONNECTION AND MODES

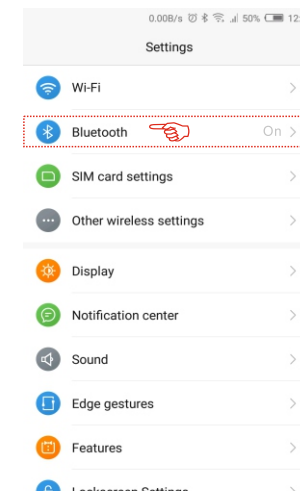
1. Download and install on your iOS device (iPhone, iPad) the application Bowlight from the AppStore. On you Android device, download Bowlight from Google Play Store.



2. Turn on the Bluetooth on your Apple or Android device (see Fig. 1)



iOS



Android

Fig. 1

3. Turn ON the floodlights. Run the application and tap "Refresh" to show device list and select the light to start connection (Fig. 2).

4. You can group a maximum of 6 lights using the app, by tapping "Group". Select the lights and add them to the desired group (Fig 3). Multiple groups can be created.

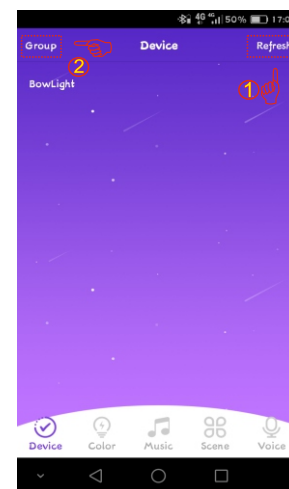


Fig. 2

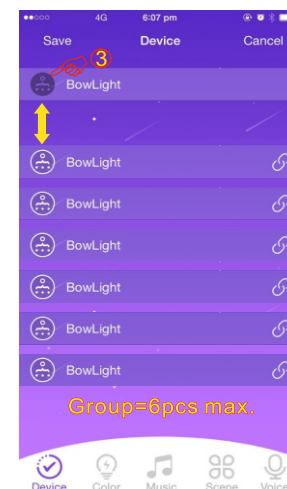


Fig. 3

5.**RGB Mode** - Tap the "Color" button to enter RGB mode. You can adjust both the colour RGB (Red/Green/Blue) as well as the brightness of the colour. There are 5 preset colour buttons for easy access to the individual channels. (Fig. 4)

6.**White Lighting Mode** - Tap the "White" button to enter White Lighting mode. You can turn the white light ON/OFF and control the brightness with the slider between 0% (OFF) and 100%. (Fig. 5)



Fig. 4 - RGB Mode

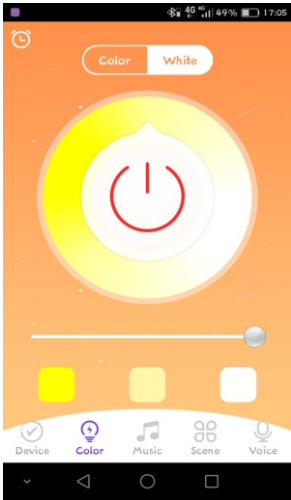


Fig. 5 - White Lighting Mode

7.**RGB Scenes** - Tap the "Scene" button to enter RGB Scene mode. There are 6 preset modes: Change, Disorder, Breathing, Strobe, Random and Violent. You can adjust the speed of each mode using the slider (Fig. 6).

Night Light mode - the white light will go down to the level of a bed reading light.

Colour Preset mode - There are 8 available colour presets. You can choose your colour from the RGB Mode screen and add it to the list by tapping the star icon in the top right corner in the RGB Mode screen (Fig. 7).

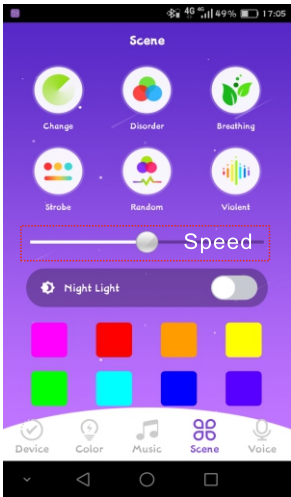


Fig. 6 - RGB Scenes

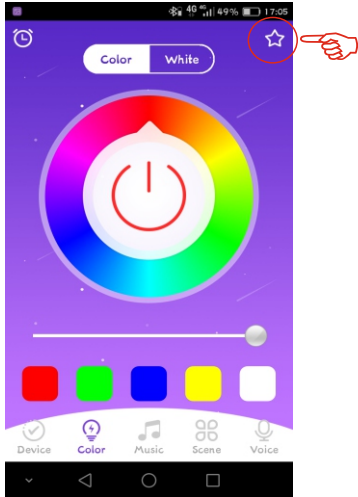


Fig. 7 - Colour preset save

8.**Music Mode** - Tap the "Music" button to enter Music mode. In this mode the connected floodlight will light in the rhythm of the music playing on the smartphone or tablet. To do this, select your music library on smartphone or tablet (bottom left corner) and select the desired music. With the pause/play button in the middle, you can start or stop the music and the LED light (Fig. 8).

9.**Voice Mode** - Tap the "Voice" button to enter in Voice mode. In this mode the connected floodlight lights up depending on the volume / noise from the outside like a microphone(Fig. 9).

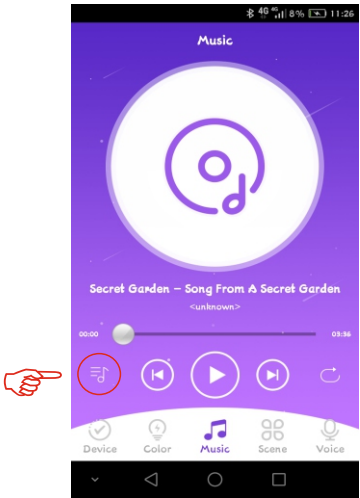


Fig. 8 - Music Mode

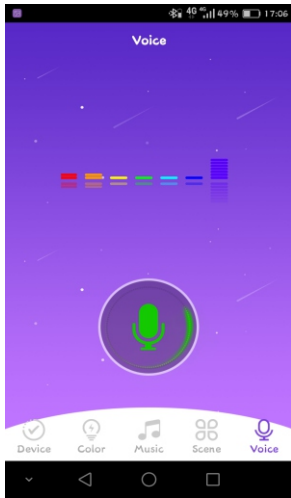


Fig. 9 - Voice Mode

10.**Timer** - The controller has a built-in timer function. To access it tap the clock button on the top left corner. A selection menu will be shown with the time ON/OFF switch. You can select the desired ON or OFF time or you can set the light to work in a time interval. The timer will not operate if the power supply is interrupted (Fig. 10).

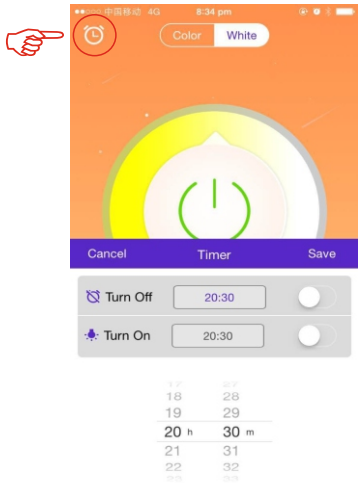


Fig. 10 - Timer