

Emergency Kit Add On for use with LTWPLED Fittings



Please read these instructions and retain them for future reference.

Important information:

It is recommended that this fitting is installed by a qualified electrician ensuring the installation complies with current IEE wiring regulations & local building control.

- This product is designed for connection to a 220-240V mains supply.
- Only mount on level and stable surfaces.
- We cannot accept responsibility for any claims arising from a poor installation.
- Always switch off mains supply before installation.
- The light fitting is Class I and requires an earth connection.

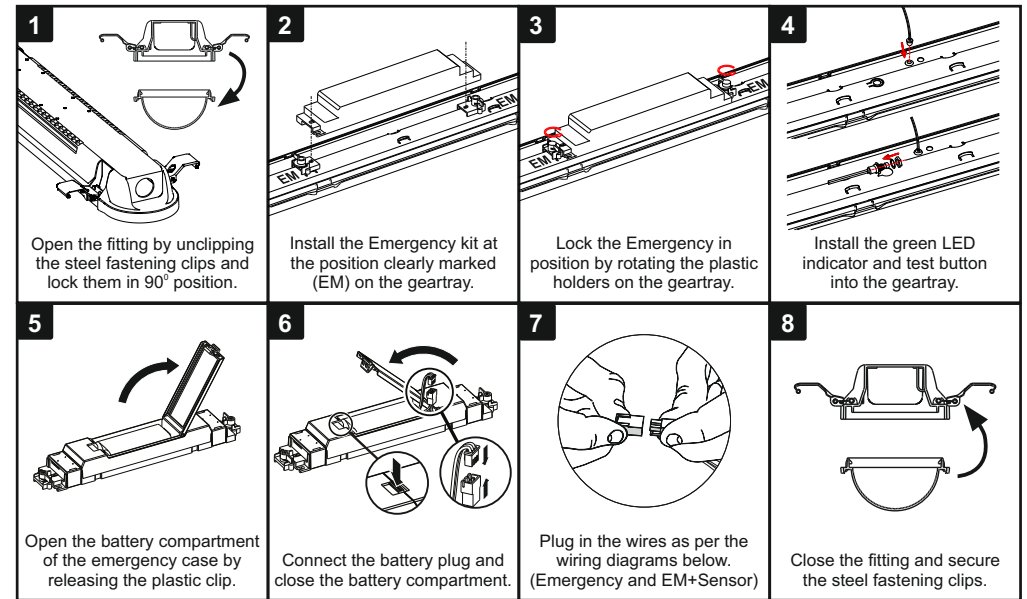
SPECIFICATIONS:

Output Wattage	2.5W	Emergency Operation Time	>3 h	Battery Type	LiFePO4 18730
Input Voltage	220-240Vac 50/60Hz	Emergency Onversion Time	<1s	Battery Capacity	2000mAh
Input Current (max)	40mA	Test Function	Manual	Battery Voltage	6.4V
Output Voltage	30-210Vdc	Length x Width x Depth	220 x 42 x 28mm	Battery Charge Voltage	7.5 Vdc
Output Current	10-85mA	Input Connection	Male/Female Plugs	Battery Charge Current	30-250 mA
Open Circuit Voltage	310Vdc	Output Connection	Male/Female Plugs	Battery Discharge Voltage	5.8-7.4 Vdc
Maximum Working Voltage	310Vdc	Maximum Case Temperature	75°C	Battery Discharge Current	400-500 mA
IP Rating	IP20	Ambient Temperature Range	0 to 50°C	Charging Time	>24h
Input to Output Protection	Double Insulation			Battery Life	2 Years

FEATURES:

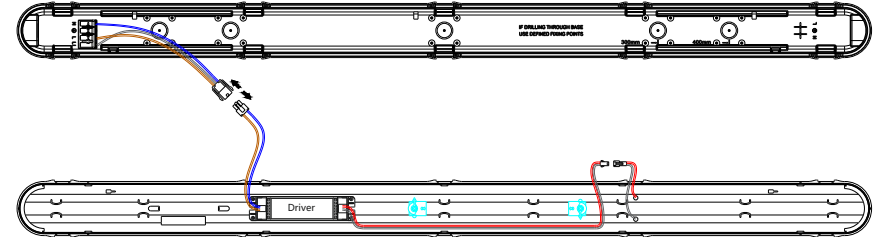
- For maintained or non-maintained emergency lighting systems
- Conforms to EN 61347-1 and EN 61347-2-7and EN 61347-2-13
- Wired between driver and LED module via internal plugs
- Voltage change-over threshold according to EN 60598-2-22
- Over 3 hours rated duration
- Replaceable internal LiFePO4 battery pack
- Over-charge, over-current, short-circuit and deep discharge protection for battery
- Test Button for a quick functional test
- Green charging status LED
- Constant power output

INSTALLING LTWPPEM EMERGENCY KIT INTO LTWPLED FITTINGS

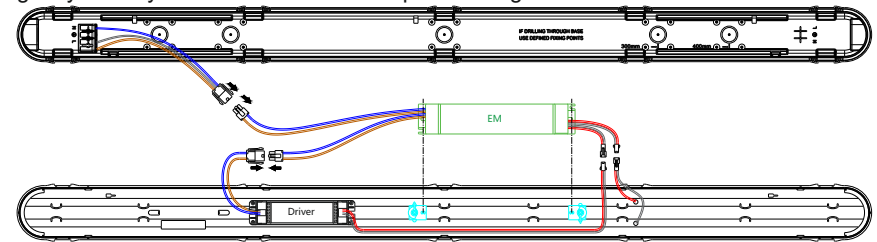


PLUG & PLAY INSTALLATION INSTRUCTIONS

1. Disconnect the driver from the power wires



2a. Emergency Kit only - Connect the wires as per the diagram below:



2b. Emergency Kit + MW Sensor - Connect the wires as per the diagram below:

