

ML Accessories PL Downlight Range Instructions

GENERAL INSTRUCTIONS

These instructions should be read carefully and retained after installation for further reference and maintenance.

SAFETY

- Before installation, maintenance or lamp replacement ensure that the mains supply to the luminaire is switched off and the circuit supply fuses are removed or circuit breaker turned off.
- It is recommended that a qualified electrician is consulted or used for the installation of this luminaire and installed to the current edition of the IEE wiring regulations.
- Check that the total load on the circuit including when this luminaire does not exceed the rating of the circuit cable, fuse or circuit breaker.

RATINGS

- This luminaire is of class I construction and must be earthed.
- IP20 rated & IP44 with suitable attachment available separately.
- F marked, suitable for installation on to normal flammable surfaces.
- 230V/240V AC rated
- CE Approved

INSTALLATION

- Remove the reflector (diagram 1)
- Loosen the gear box cover screws and remove the cover to expose the mains connection terminal block (Diagram 2)
- Insert the mains cable in to the gear box through one of the holes provided and secure using internal clamp
- The gear box can be removed and mounted remotely if necessary (Diagram 3)
- Terminate the cable into the terminal block ensuring correct polarity is observed and the luminaire is earthed.
- Replace the gear box cover and re tighten the cover screws.
- Insert the fixing clips (diagram 4)
- Cut a suitable round hole in the ceiling so as not infringe any joists, water or gas pipes or electrical) **(cut-out size for GL PL 218 / 226 = 200mm)**
(cut-out size for GL PL213 = 175mm)
- Insert Fitting into ceiling and tighten down fixing clips.
- If no accessories are to be used the reflector can be re-fitted (Diagram 1)
- If accessories are to be used see diagram 5 for installation guide.
- Fit PL lamps. If a drop glass, decorative or IP44 sealed glass is to be used fit lamps before fixing glass.

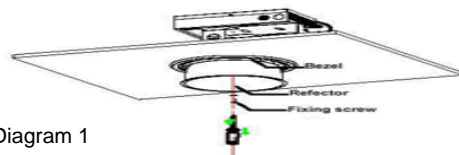


Diagram 1

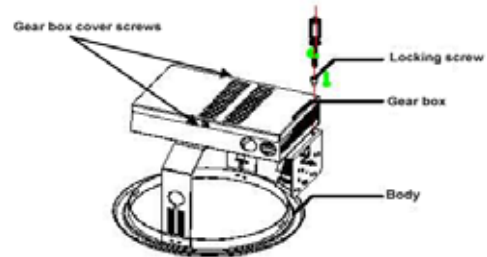


Diagram 2

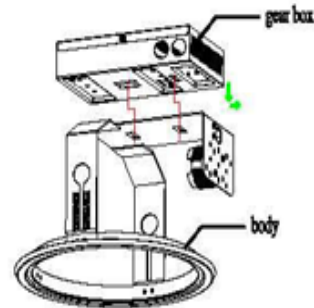


Diagram 3

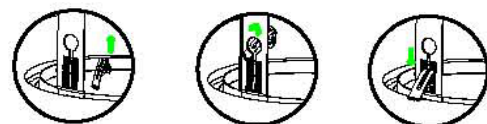
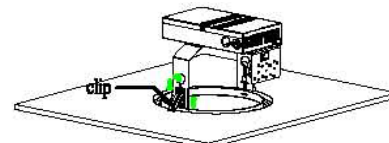


Diagram 4

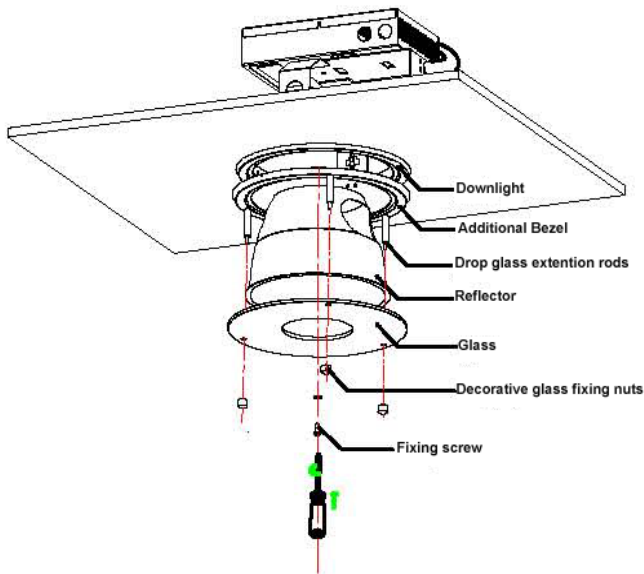


Diagram 5