



CIRCPRO™
Solutions



Authorized
Licensee

MK SENTRY

MK SENTRY RANGE INTRODUCTION

CircPro (UK) Limited is the UK Registered Company, set up to provide the sales and distribution of the MK Sentry Circuit Protection product range. Our parent company, Yihua Holding Group, holds the exclusive license from MK Honeywell to manufacture and supply the MK Sentry circuit protection product range into the UK market.

The MK Sentry circuit protection product range has been in production for more than 40 years and through the license agreement its continued supply into the market is guaranteed.

The extensive range will fully comply with the requirement of the 18th Edition Regulations and will come with the full guarantees previously received with the offering.

The MK Sentry range of consumer units have been stylishly designed to blend in with its environment. The curved lines and slim line appearance mean it won't look out of place when installed in hallways, lounges or kitchens.



SUPPORTS 18TH EDITION AMENDMENT 3 COMPLIANCE

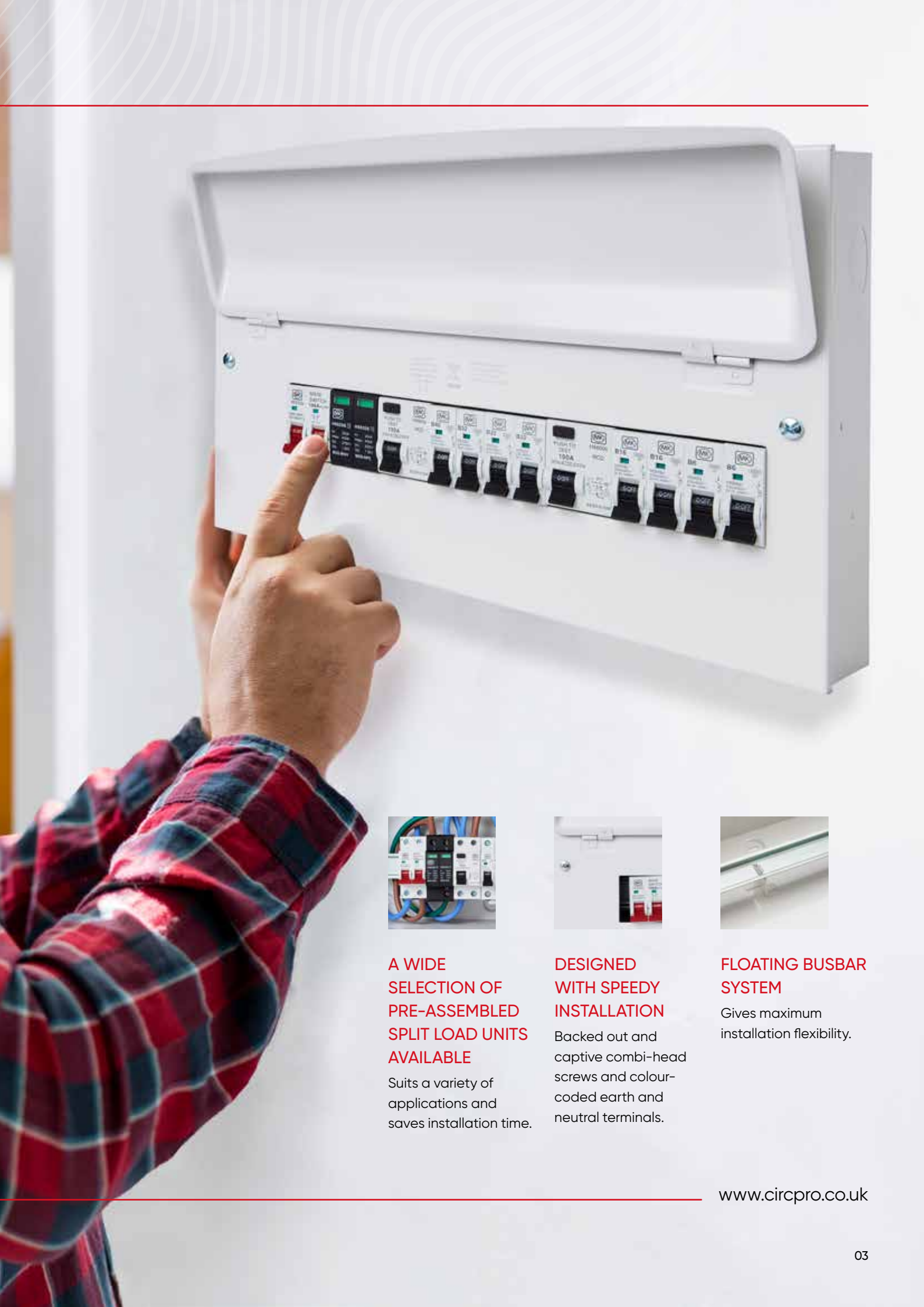
Full range of products to support compliance with the 18th Edition Amendment 3 of the Wiring Regulations, including full metal non-combustible enclosures for Consumer Units.

MK BRANDED

The license agreement enables all products to be branded MK, reassuring all of the key values of reliability, safety and quality.

EXTENSIVE RANGE

Offering all of the key products to complete an installation.



**A WIDE
SELECTION OF
PRE-ASSEMBLED
SPLIT LOAD UNITS
AVAILABLE**

Suits a variety of applications and saves installation time.



**DESIGNED
WITH SPEEDY
INSTALLATION**

Backed out and captive combi-head screws and colour-coded earth and neutral terminals.



**FLOATING BUSBAR
SYSTEM**

Gives maximum installation flexibility.

FEATURES AND BENEFITS



MANUFACTURED FROM CORROSION RESISTANT MATERIAL

Corrosion resistant material, which ensures full compliance with 17th Edition Amendment 3



MULTIPLE EXTRA LARGE KNOCK OUTS

Aides and eases installation



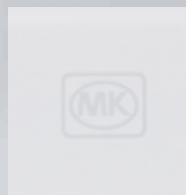
CURVED STYLISH DESIGN

Blends into the environment



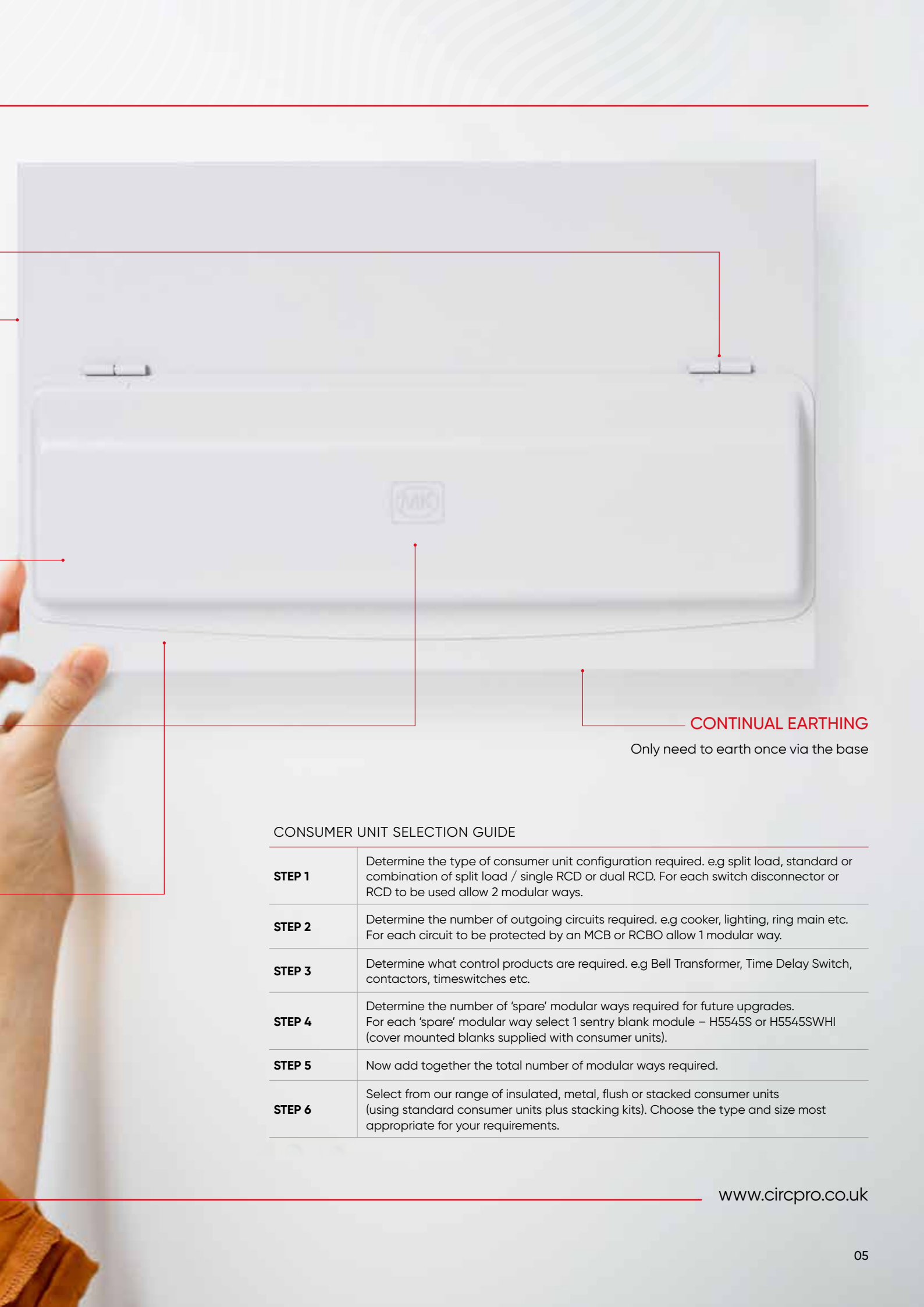
TOP HINGED DOOR

Prevents door being left open after use leading to a possible fire risk



MK WHITE COLOUR

Modernised aesthetics for visible installations. Design service available for bespoke requests



CONTINUAL EARTHING

Only need to earth once via the base

CONSUMER UNIT SELECTION GUIDE

| | |
|---------------|--|
| STEP 1 | Determine the type of consumer unit configuration required. e.g split load, standard or combination of split load / single RCD or dual RCD. For each switch disconnector or RCD to be used allow 2 modular ways. |
| STEP 2 | Determine the number of outgoing circuits required. e.g cooker, lighting, ring main etc. For each circuit to be protected by an MCB or RCBO allow 1 modular way. |
| STEP 3 | Determine what control products are required. e.g Bell Transformer, Time Delay Switch, contactors, timeswitches etc. |
| STEP 4 | Determine the number of 'spare' modular ways required for future upgrades. For each 'spare' modular way select 1 sentry blank module – H5545S or H5545SWHI (cover mounted blanks supplied with consumer units). |
| STEP 5 | Now add together the total number of modular ways required. |
| STEP 6 | Select from our range of insulated, metal, flush or stacked consumer units (using standard consumer units plus stacking kits). Choose the type and size most appropriate for your requirements. |

FEATURES AND BENEFITS



BACKED OUT AND CAPTIVE COMBI-HEAD SCREWS

Allows simple and speedy installation



EASILY REMOVABLE DIN RAIL

Simplifying and easing first fix



SUPPORTING DIN RAIL "T" BAR

Prevents door being left open after use leading to a possible fire risk



OFFSET INCOMER

Provides additional wiring space making mains input connections easier



SURGE PROTECTION DEVICE (SPD)

SPD compatibility tested with CIRCPRO Sentry boards and devices



COLOUR CODED EARTH AND NEUTRAL TERMINAL LOCKED

At top of unit for ease of wiring



FIXING HOLES

Tripod fixing to cope with uneven surfaces

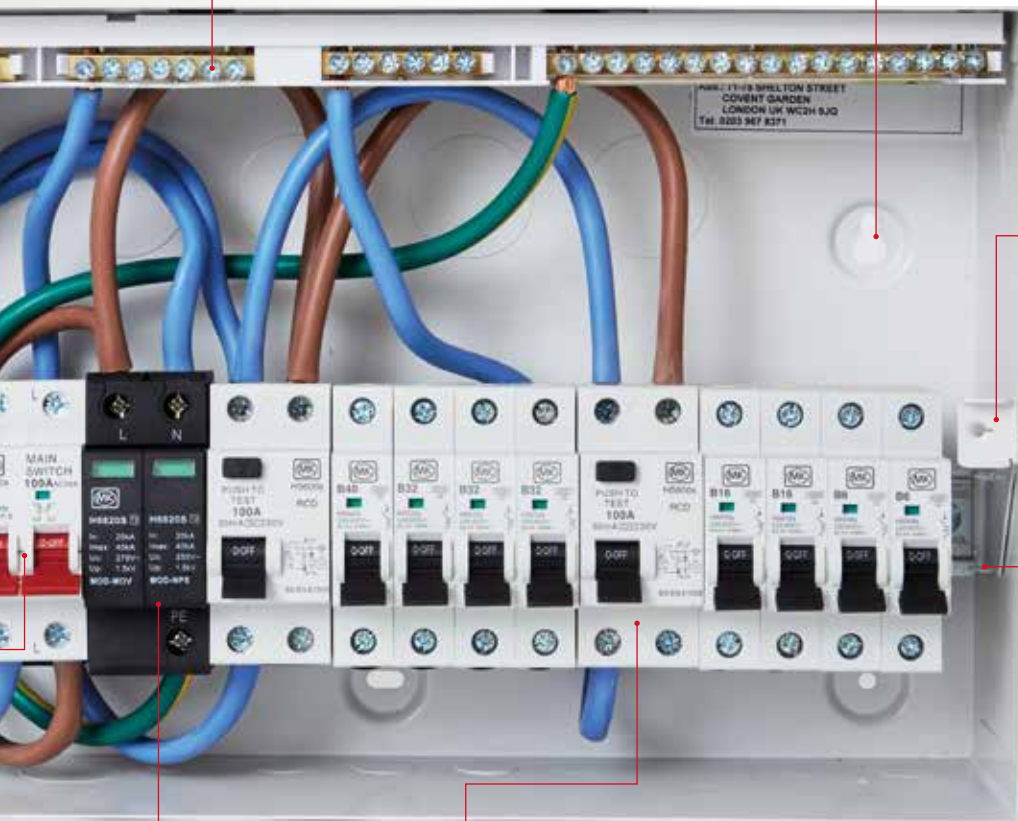


ADDITIONAL WIRING SPACE

240mm height for increased wiring space

FLOATING BUSBAR SYSTEM

For maximum installation flexibility including acceptance of control modules



TYPE A RCDS ALSO SUITABLE FOR TYPE AC APPLICATIONS

Detection of AC fault currents, and DC components in fault current.

SUITABLE FOR RESISTIVE CAPACITIVE INDUCTION LOADS

Applicable to loads without any electronic components such as immersion heaters, electric showers, ovens/hobs with resistive heating elements.

SUITABLE FOR SINGLE PHASE LOADS WITH ELECTRONIC COMPONENTS

Applicable for single phase invertors, induction hobs, power supplies for class 2 equipment, class 1 IT and multimedia equipment and appliances such as washing machines that are not frequency controlled e.g. DC or universal motor.

MK SENTRY RANGE INTRODUCTION

THE CHANGES

Transient Overvoltage Protection

OVERVOLTAGE CONTROL

Limiting the damage caused by an increase in lightning strikes. Protection against transient overvoltages is now required in specified situations when such overvoltages could result in:

- Serious injury or loss of human life and/or damage to cultural heritage
- Many individuals in same location being affected
- Interruption of commercial or industrial activity

Surge Protection Devices (SPD) have now been introduced as a mandatory requirement into the 18th Edition wiring regulations for domestic installations.

To determine if protection against transient overvoltage is required, a risk assessment can be carried out. If the risk assessment is not performed, the electrical installation shall be provided with protection against transient overvoltage.

This excludes single dwelling units, where the total value of the installation and equipment therein does not justify such protection.

The MK Sentry range now includes a selection of pre-populated consumer units featuring Surge Protection Devices (SPDs) which meet this need, as well as individual SPDs for those designing and building bespoke boards.



YS5704SMET

YS8666SMET

YS8678SMET



18TH EDITION OVERVIEW

The release of the 18th Edition of BS 7671:2018 saw significant changes in the wiring regulations and these came into effect on 1st January 2019.

These regulations had a significant impact on the design of residential electrical installations and a significant number of these changes concerned the consumer unit and incorporated devices.

Y8666SMET





MK SENTRY

The MK Sentry range of RCD devices includes Type A RCD devices, alongside Type AC RCD devices, giving installers a choice of products to meet the requirements of residential applications.



RCD – RESIDUAL CURRENT DEVICE

For circuits with luminaires within domestic (household) premises, additional protection is required by an RCD with a rated residual operating current not exceeding 30mA shall be provided for AC final circuits supplying luminaires.



H5600S



H6900S



18TH EDITION OVERVIEW

AFDD – Arc Fault Detection Device

A new regulation 421.1.7 has been introduced recommending the installation of arc fault detection devices.

(AFDDs complying to BS EN 62606) to mitigate the risk of fire in AC final circuits of a fixed installation because of arc fault currents.

These are only recommended and are not to be considered for all areas.

THE CHANGES

Transient overvoltage protection

OVERVOLTAGE CONTROL

Electrical installations should minimise the risk of ignition of flammable materials from electric arc or high temperature.

AFDDs recommended install areas cover:



- Premises with sleeping accommodation



- Locations with risk of fire due to the nature of processed or stored materials (barns, wood-working shops, stores of combustible materials)



- Fire propagating structures



- Locations with endangering of irreplaceable goods



Most of the areas listed excluding sleeping accommodations and some propitiating buildings will be mostly three-phase locations due to the type of machinery or the use of the building.

If used, should be installed at the origin of the final circuit in AC single-phase circuits not exceeding 230v. Areas that have been exempt for the use of this type of device are hospitals.

An AFDD utilises electronic technology to analyse the signature (waveform) of an arc to differentiate between normal arcing and arcing faults between L-L, L-N and L-E. Upon detection of an arcing fault, the AFDD disconnects the final circuit from the supply.

In electrical circuits there are numerous cases of normal arcs appearing that correspond to a typical operation such as switches, contactors, portable tools and vacuum cleaner motors.

AFDDs are designed and tested to not respond to arcing under normal operation of equipment, but to respond to arc faults while the equipment is in operation.

MK SENTRY IMPACT AND INSTALLATION CONSIDERATIONS



WHAT DAMAGE CAN BE DONE DUE TO A LEMP ON AN UNPROTECTED CIRCUIT?

The bottom line is that every electrical device can be destroyed by a LEMP on an unprotected circuit together with loss of property and life.

The statistics back up the requirement and cost benefit for the protection.

BENEFITS OF USING A SURGE PROTECTION DEVICE (SPD)



- Reduces the risk of loss of human life, from the effects of electrical voltage surges



- Reduces the risk of damage from atmospheric surges (lightning strikes) to connected electrical equipment



- Reduces the risk of fire, caused by lightning current effects including sparking and flashovers



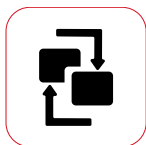
- Reduces the risk of electric shock hazards due to overvoltage (industrial capacitor banks, contactor coils or other industrial switching)



- Protect sensitive electronic equipment (TVs computers etc.)



- Protects the internal/external wiring infrastructure of the building



- Prevents unnecessary disruption

SURGE PROTECTION DEVICES (SPD) Type 2 SPD

Recommended for all low voltage electrical installations. Installed in each electrical switchboard, it prevents the spread of over voltages in the electrical installations and protects the loads.

Type 2 SPD is characterised by an 8/20 μ s current wave.



Consumer Units

METAL
ENCLOSURE ONLY
SURFACE



Y5604sMET
4 WAY
ENCLOSURE
ACCEPTS 4
ONE MODULE
PRODUCTS
(1 INTEGRAL
NEUTRAL BAR)



Y5608sMET
8 WAY
ENCLOSURE
ACCEPTS 8
ONE MODULE
PRODUCTS
(1 INTEGRAL
NEUTRAL BAR)



Y5612sMET
12 WAY ENCLOSURE
ACCEPTS 8 ONE
MODULE PRODUCTS
(2 INTEGRAL
NEUTRAL
BARS FITTED WITH
LINKS)



Y5616sMET
16 WAY ENCLOSURE
ACCEPTS 16 ONE MODULE
PRODUCTS (3 INTEGRAL
NEUTRAL BARS FITTED
WITH LINKS)



Y5621sMET
21 WAY ENCLOSURE
ACCEPTS 21 ONE MODULE
PRODUCTS
(3 INTEGRAL NEUTRAL
BARS FITTED WITH LINKS)

All units are white coloured.
All units feature a robust galvanised metal base, lid and door. The DIN rail embodies a useful alignment and fixing mechanism that allows quick installation. Cable entry points are located on top, bottom, side and rear surfaces.

| DIMENSIONS: | | | |
|-------------|-------|--------|---------|
| | Width | Height | Depth |
| 4 WAY | 144 | x 244 | x 116mm |
| 8 WAY | 238 | x 244 | x 116mm |
| 12 WAY | 310 | x 244 | x 116mm |
| 16 WAY | 382 | x 244 | x 116mm |
| 21 WAY | 472 | x 244 | x 116mm |

MAIN INCOMER RATING:
4 WAY ENCLOSURES: 63A
8, 12, 16 AND 21 WAY ENCLOSURES:
100A degree of protection to
BS EN 60529 to IP2XC.
Precautions must be taken to maintain
the IP rating, e.g. use of cable glands
and knockouts.
BS EN 61439-3



Consumer Units

METAL
ENCLOSURE + SWITCH
DISCONNECTOR
SURFACE



Y5704sMET
4 WAY ENCLOSURE
100A SWITCH
DISCONNECTOR
ACCEPTS A FURTHER
2 ONE MODULE
PRODUCTS



Y5708sMET
8 WAY
ENCLOSURE
100A SWITCH
DISCONNECTOR
ACCEPTS A
FURTHER
6 ONE MODULE
PRODUCTS



Y5712sMET
12 WAY ENCLOSURE
100A SWITCH
DISCONNECTOR
ACCEPTS A FURTHER
10 ONE MODULE
PRODUCTS



Y5716sMET
16 WAY ENCLOSURE
100A SWITCH DISCONNECTOR
ACCEPTS A FURTHER
14 ONE MODULE PRODUCTS



Y5721sMET
21 WAY ENCLOSURE
100A SWITCH DISCONNECTOR
ACCEPTS A FURTHER
19 ONE MODULE PRODUCTS

All units are pre-fitted with a switch
disconnecter.

DIMENSIONS:

| | Width | Height | Depth |
|---------------|-------|--------|---------|
| 4 WAY | 144 | x 244 | x 116mm |
| 8 WAY | 238 | x 244 | x 116mm |
| 12 WAY | 310 | x 244 | x 116mm |
| 16 WAY | 382 | x 244 | x 116mm |
| 21 WAY | 472 | x 244 | x 116mm |

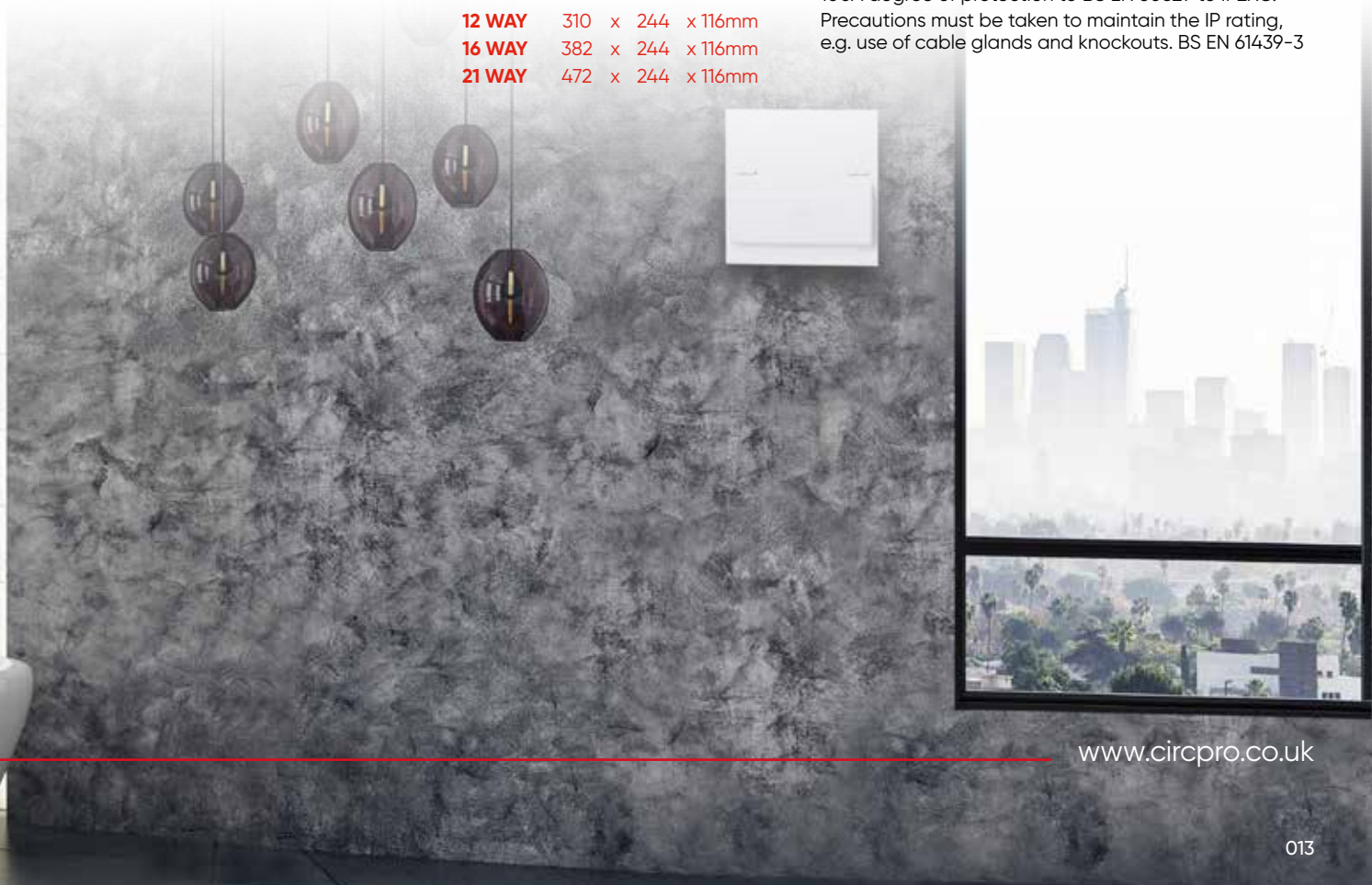
MAIN INCOMER RATING:

4 WAY ENCLOSURES: 63A

8, 12, 16 AND 21 WAY ENCLOSURES:

100A degree of protection to BS EN 60529 to IP2XC.

Precautions must be taken to maintain the IP rating,
e.g. use of cable glands and knockouts. BS EN 61439-3



Consumer Units

SPLIT-LOAD
SINGLE RCD ARRANGEMENTS
METAL
SURFACE



Y5682sMET
12 WAY ENCLOSURE
100A SWITCH
DISCONNECTOR
63A 30MA RCD
ACCEPTS A FURTHER 8 ONE
MODULE PRODUCTS



Y5662sMET
12 WAY ENCLOSURE
100A SWITCH DISCONNECTOR
80A 30MA RCD
ACCEPTS A FURTHER
8 ONE MODULE PRODUCTS



Y5684sMET
21 WAY ENCLOSURE
100A SWITCH
DISCONNECTOR
80A 30MA RCD
ACCEPTS A FURTHER
17 ONE MODULE
PRODUCTS



Y5689sMET
16 WAY ENCLOSURE
100A SWITCH DISCONNECTOR
63A 30MA RCD
ACCEPTS A FURTHER 12 ONE
MODULE PRODUCTS



Y5685sMET
16 WAY ENCLOSURE
100A SWITCH DISCONNECTOR
80A 30MA RCD
ACCEPTS A FURTHER 12 ONE
MODULE PRODUCTS

All units are white coloured.

All units are pre-fitted with a switch disconnector and RCD together with all the necessary split-load cabling. The flexibility of design allows the RCD to be positioned to suit the required configuration of RCD protected and non-protected circuits, subject to the rating of either the switch or RCD not being exceeded.

MK Sentry recommends the use of RCBOs for non-RCD protected circuits to comply with the 17th Edition Amendment 3 Wiring Regulations.

DIMENSIONS:

| | Width | Height | Depth |
|---------------|-------|--------|---------|
| 4 WAY | 144 | x 244 | x 116mm |
| 8 WAY | 238 | x 244 | x 116mm |
| 12 WAY | 310 | x 244 | x 116mm |
| 16 WAY | 382 | x 244 | x 116mm |
| 21 WAY | 472 | x 244 | x 116mm |

MAIN INCOMER RATING:

4 WAY ENCLOSURES: 63A
8, 12, 16 AND 21 WAY ENCLOSURES: 100A degree of protection to BS EN 60529 to IP2XC. Precautions must be taken to maintain the IP rating, e.g. use of cable glands and knockouts. BS EN 61439-3

Consumer Units

SPLIT-LOAD
DUAL RCD ARRANGEMENTS METAL
SURFACE



Y5666sMET
16 WAY ENCLOSURE
100A SWITCH
DISCONNECTOR
2 X 63A 30MA RCDS
ACCEPTS A FURTHER 10 ONE
MODULE PRODUCTS



Y5688sMET
16 WAY ENCLOSURE
100A SWITCH
DISCONNECTOR
2 X 80A 30MA RCDS
ACCEPTS A FURTHER 10 ONE
MODULE PRODUCTS



Y5686sMET
16 WAY ENCLOSURE
100A SWITCH
DISCONNECTOR
1 X 63A AND 1 X 80A 30MA
RCDS ACCEPTS A FURTHER
10 ONE MODULE PRODUCTS



Y5683sMET
21 WAY ENCLOSURE
100A SWITCH
DISCONNECTOR
2 X 63A 30MA RCDS
ACCEPTS A FURTHER
15 ONE MODULE
PRODUCTS



Y5687sMET
21 WAY ENCLOSURE
100A SWITCH
DISCONNECTOR
2 X 80A 30MA RCDS
ACCEPTS A FURTHER
15 ONE MODULE
PRODUCTS



Y5681sMET
21 WAY ENCLOSURE
100A SWITCH
DISCONNECTOR
1 X 63A AND 1 X 80A
30MA RCDS
ACCEPTS A FURTHER
15 ONE MODULE
PRODUCTS

All units are pre-fitted with a switch disconnecter and RCD together with all the necessary split-load cabling. The flexibility of design allows the RCD to be positioned to suit the required configuration of RCD protected and non-protected circuits, subject to the rating of either the switch or RCD not being exceeded.

MK Sentry recommends the use of RCBOs for non RCD protected circuits to comply with the 17th Edition Amendment 3 Wiring Regulations.

DIMENSIONS:

| | Width | Height | Depth |
|---------------|-------|--------|---------|
| 4 WAY | 144 | x 244 | x 116mm |
| 8 WAY | 238 | x 244 | x 116mm |
| 12 WAY | 310 | x 244 | x 116mm |
| 16 WAY | 382 | x 244 | x 116mm |
| 21 WAY | 472 | x 244 | x 116mm |

MAIN INCOMER RATING:

4 WAY ENCLOSURES: 63A

8, 12, 16 AND 21 WAY ENCLOSURES:
100A degree of protection to BS EN 60529 to IP2XC. Precautions must be taken to maintain the IP rating, e.g. use of cable glands and knockouts.
BS EN 61439-3



Consumer Units

FULLY POPULATED
ARRANGEMENTS
METAL
SURFACE



Y6550sMET
4 WAY
ENCLOSURE
63A 30MA RCD
2 X MCBS
(1 X 6A AND
1 X 16A)



Y6552sMET
8 WAY ENCLOSURE
63A 30MA RCD
6 X MCBS
(3 X 6A, 1 X 16A AND
2 X 20A)



Y7673sMET
12 WAY
ENCLOSURE
100A SWITCH
DISCONNECTOR
6 X RCBOs (2
X 6A, 1 X 16A, 2
X 32A AND 1 X
40A) ACCEPTS
A FURTHER 4
ONE MODULE
PRODUCTS



Y6551sMET
4 WAY
ENCLOSURE
63A 30MA RCD
1 X MCB
(1 X 50A)



Y7663sMET
12 WAY
ENCLOSURE
100A SWITCH
DISCONNECTOR
63A 30MA RCD
6 X MCBS (2 X 6A,
2 X 16A AND
2 X 32A)
2 X RCBOs (1 X 6A
AND 1 X 40A)



Y7678sMET
21 WAY
ENCLOSURE
1 X 63A AND 1 X
80A 30MA RCDs
12 X MCBS
(3 X 6A, 2 X 16A,
2 X 20A, 4 X
32A AND 1 X
40A) ACCEPTS
A FURTHER 3
ONE MODULE
PRODUCTS

All units are white coloured.

All units are pre-fitted with a switch disconnecter and RCD together with all the necessary split-load cabling.

The flexibility of design allows the RCD to be positioned to suit the required configuration of RCD protected and non-protected circuits, subject to the rating of either the switch or RCD not being exceeded.

MK Sentry recommends the use of RCBOs for non RCD protected circuits to comply with the 18th Edition Amendment 3 Wiring Regulations.

DIMENSIONS:

| | Width | Height | Depth |
|---------------|-------|--------|---------|
| 4 WAY | 144 | x 244 | x 116mm |
| 8 WAY | 238 | x 244 | x 116mm |
| 12 WAY | 310 | x 244 | x 116mm |
| 16 WAY | 382 | x 244 | x 116mm |
| 21 WAY | 472 | x 244 | x 116mm |

MAIN INCOMER RATING:

4 WAY ENCLOSURES: 63A

8, 12, 16 AND 21 WAY ENCLOSURES:
100A degree of protection to BS EN 60529 to IP2XC.

Precautions must be taken to maintain the IP rating, e.g. use of cable glands and knockouts.
BS EN 61439-3

Consumer Units

FULLY POPULATED
ARRANGEMENTS
METAL
SURFACE



Y7664sMET
12 WAY ENCLOSURE
100A SWITCH DISCONNECTOR
2 X 63A 30MA RCDS
6 X MCBs
(2 X 6A, 1 X 16A, 2 X 32A AND 1 X 40A)



Y7665sMET
16 WAY ENCLOSURE
100A SWITCH DISCONNECTOR
2 X 63A 30MA RCDS
8 X MCBs (2 X 6A, 2 X 16A, 3 X 32A
AND 1 X 40A) ACCEPTS A FURTHER 2
ONE MODULE PRODUCTS



Y7666sMET
16 WAY ENCLOSURE
100A SWITCH DISCONNECTOR
2 X 63A 30MA RCDS
10 X MCBs
(3 X 6A, 2 X 16A, 4 X 32A AND 1 X 40A)

All units are white coloured.

All units are pre-fitted with a switch disconnecter and RCD together with all the necessary split-load cabling.

The flexibility of design allows the RCD to be positioned to suit the required configuration of RCD protected and non-protected circuits, subject to the rating of either the switch or RCD not being exceeded.

MK Sentry recommends the use of RCBOs for non RCD protected circuits to comply with the 18th Edition Amendment 3 Wiring Regulations.

FULLY POPULATED
ARRANGEMENTS
METAL TYPE A RCD
SURFACE



Y7664sMET-A
12 WAY ENCLOSURE
100A SWITCH DISCONNECTOR
2 X 63A 30MA TYPE A RCD
6 X MCBs (2 X 6A, 1 X 16A, 2 X 32A,
1 X 40A)



Y7665sMET-A
16 WAY ENCLOSURE
100A SWITCH DISCONNECTOR
2 X 63A TYPE A RCD
8 X MCBs (2 X 6A, 2 X 16A, 3 X 32A,
1 X 40A)



Y7666sMET-A
16 WAY ENCLOSURE
100A SWITCH DISCONNECTOR
2 X 63A 30MA TYPE A RCD
10 X MCBs (3 X 6A, 2 X 16A, 4 X 32A,
1 X 40A)

DIMENSIONS:

| | Width | Height | Depth |
|---------------|-------|--------|---------|
| 4 WAY | 144 | x 244 | x 116mm |
| 8 WAY | 238 | x 244 | x 116mm |
| 12 WAY | 310 | x 244 | x 116mm |
| 16 WAY | 382 | x 244 | x 116mm |
| 21 WAY | 472 | x 244 | x 116mm |

MAIN INCOMER RATING:

4 WAY ENCLOSURES: 63A

8, 12, 16 AND 21 WAY ENCLOSURES:

100A degree of protection to BS EN 60529 to IP2XC.

Precautions must be taken to maintain the IP rating, e.g. use of cable glands and knockouts.
BS EN 61439-3

Consumer Units

FULLY POPULATED
ARRANGEMENTS
METAL TYPE A RCD
SURFACE

METAL ENCLOSURE +
SWITCH DISCONNECTOR +
SURGE DEVICE



Y8664sMET
12 WAY ENCLOSURE
100A SWITCH DISCONNECTOR
2 X 100A 30MA RCD
6 X MCBs
(2 X 6A, 1 X 16A, 2 X 32A AND 1 X 40A)



Y8665sMET
16 WAY ENCLOSURE
100A SWITCH DISCONNECTOR
2 X 100A 30MA RCD
8 X MCBs
(2 X 6A, 2 X 16A, 3 X 32A AND 1 X 40A)
ACCEPTS A FURTHER 2 ONE MODULE



Y8666sMET
16 WAY ENCLOSURE
100A SWITCH DISCONNECTOR
2 X 100A 30MA RCD
10 X MCBs
(3 X 6A, 2 X 16A, 4 X 32A AND 1 X 40A)



Y8678sMET
21 WAY ENCLOSURE
2 X 100A 30MA RCD
12 X MCBs (3 X 6A, 2 X 16A, 2 X 20A,
4 X 32A AND 1 X 40A) ACCEPTS A
FURTHER 3 ONE MODULE PRODUCTS



YS5708sMET
8 WAY ENCLOSURE
100A SDC
1X SURGE



YS5712sMET
12 WAY ENCLOSURE
100A SDC
1 X SURGE
ACCEPTS A FURTHER 8 ONE
MODULE PRODUCTS



YS5716sMET
16 WAY ENCLOSURE
100A SDC
1 X SURGE
ACCEPTS A FURTHER 12 ONE
MODULE PRODUCTS



YS5721sMET
21 WAY ENCLOSURE
100A SDC
1 X SURGE
ACCEPTS A FURTHER 17 ON
MODULE PRODUCT

DIMENSIONS:

| | Width | Height | Depth |
|---------------|-------|--------|---------|
| 4 WAY | 144 | x 244 | x 116mm |
| 8 WAY | 238 | x 244 | x 116mm |
| 12 WAY | 310 | x 244 | x 116mm |
| 16 WAY | 382 | x 244 | x 116mm |
| 21 WAY | 472 | x 244 | x 116mm |

MAIN INCOMER RATING:

4 WAY ENCLOSURES: 63A
8, 12, 16 AND 21 WAY ENCLOSURES:
100A degree of protection to BS EN 60529 to IP2XC. Precautions must be taken to maintain the IP rating, e.g. use of cable glands and knockouts. BS EN 61439-3

All units are white coloured.

All units are pre-fitted with a switch disconnecter and RCD together with all the necessary split-load cabling. The flexibility of design allows the RCD to be positioned to suit the required configuration of RCD protected and non-protected circuits, subject to the rating of either the switch or RCD not being exceeded. MK Sentry recommends the use of RCBOs for non RCD protected circuits to comply with the 18th Edition Amendment 3 Wiring Regulations.

Consumer Units

FULLY POPULATED
ARRANGEMENTS METAL -
SURGE DEVICE



YS5704sMET
4 WAY ENCLOSURE
100A SDC
1 X SURGE



YS8666sMET
16 WAY ENCLOSURE
2 X 100A 30MA RCD
8 X MCBS
(2 X 6A, 2 X 16A,
3 X 32A, 1 X 40A)
1 X SURGE



YS7666sMET
16 WAY ENCLOSURE
2 X 63A 30MA RCD
8 X MCBS
(2 X 6A, 2 X 16A, 3 X
32A, 1 X 40A)
1 X SURGE



YS8678sMET
21 WAY ENCLOSURE
2 X 100A 30MA RCD
12 MCBS
(3 X 6A, 2 X 16A, 2 X 20A,
4 X 32A, 1 X 40A)
1 X SURGE

All units are white coloured.

All units are pre-fitted with a switch disconnector and RCD together with all the necessary split-load cabling.

The flexibility of design allows the RCD to be positioned to suit the required configuration of RCD protected and non-protected circuits, subject to the rating of either the switch or RCD not being exceeded.

MK Sentry recommends the use of RCBOS for non RCD protected circuits to comply with the 18th Edition Amendment 3 Wiring Regulations.

DIMENSIONS:

| | Width | Height | Depth |
|---------------|-------|--------|---------|
| 4 WAY | 144 | x 244 | x 116mm |
| 8 WAY | 238 | x 244 | x 116mm |
| 12 WAY | 310 | x 244 | x 116mm |
| 16 WAY | 382 | x 244 | x 116mm |
| 21 WAY | 472 | x 244 | x 116mm |

MAIN INCOMER RATING:

4 WAY ENCLOSURES: 63A
8, 12, 16 AND 21 WAY ENCLOSURES:

100A degree of protection to BS EN 60529 to IP2XC. Precautions must be taken to maintain the IP rating, e.g. use of cable glands and knockouts. BS EN 61439-3





Switch
Disconnectors
Double Pole

TWO MODULE

| PART NO. | DESCRIPTION |
|----------|-------------|
| H5500s | 100A 230V |
| H5560s | 63A 230V |

Suitable for installation in MK Sentry consumer units and two or four module enclosures. Accepts direct to busbar or cable-in / cable-out connection.

CATEGORY OF DUTY:

AC22A for switching of resistive and inductive loads. Positive contact status indication in accordance with 17th Edition IEE Wiring Regulations (537.2.2.2 and 537.3.2.2)

DIMENSIONS:

81 x 36 x 76mm

CABLE CAPACITY:

50mm²

BS EN 60947-3:1999



MCBs
Single Pole

TYPE B

ONE MODULE

| PART NO. | DESCRIPTION | PART NO. | DESCRIPTION |
|----------|-------------|----------|-------------|
| H5903s | 3A 230V | H5925s | 25A 230V |
| H5906s | 6A 230V | H5932s | 32A 230V |
| H5910s | 10A 230V | H5940s | 40A 230V |
| H5916s | 16A 230V | H5945s | 45A 230V |
| H5920s | 20A 230V | H5950s | 50A 230V |
| H5925s | 25A 230V | H5963s | 63A 230V |



TYPE C

ONE MODULE

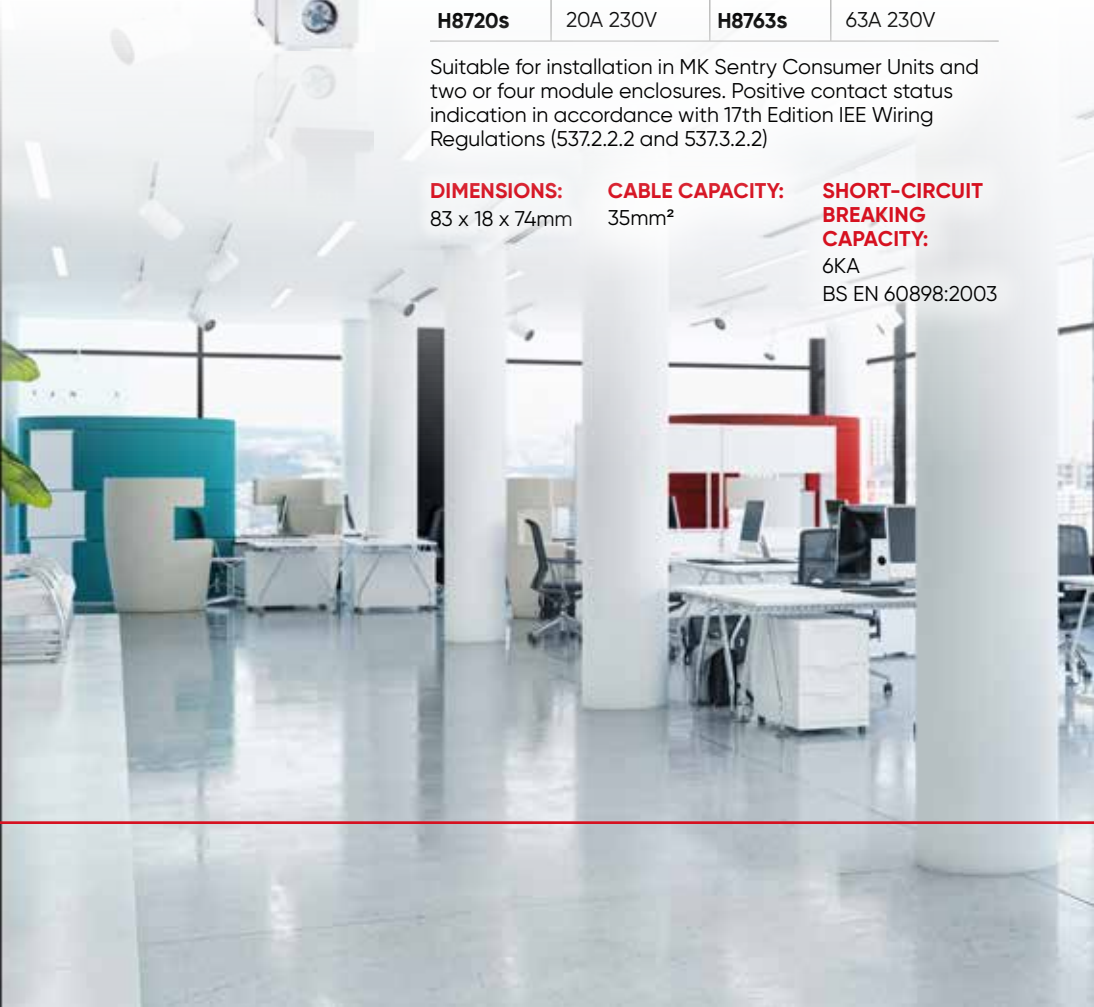
| PART NO. | DESCRIPTION | PART NO. | DESCRIPTION |
|----------|-------------|----------|-------------|
| H8703s | 3A 230V | H8725s | 25A 230V |
| H8706s | 6A 230V | H8732s | 32A 230V |
| H8710s | 10 230V | H8740s | 40A 230V |
| H8716s | 16A 230V | H8750s | 50A 230V |
| H8720s | 20A 230V | H8763s | 63A 230V |

Suitable for installation in MK Sentry Consumer Units and two or four module enclosures. Positive contact status indication in accordance with 17th Edition IEE Wiring Regulations (537.2.2.2 and 537.3.2.2)

DIMENSIONS:
83 x 18 x 74mm

CABLE CAPACITY:
35mm²

**SHORT-CIRCUIT
BREAKING
CAPACITY:**
6KA
BS EN 60898:2003





RCBOs With Solid Neutral Single Pole

TYPE B A STYLE ONE MODULE

| PART NO. | DESCRIPTION |
|---------------|---------------------------------|
| H6832s | 6A 230V, 30mA Tripping Current |
| H6833s | 10A 230V, 30mA Tripping Current |
| H6834s | 16A 230V, 30mA Tripping Current |
| H6835s | 20A 230V, 30mA Tripping Current |
| H6836s | 32A 230V, 30mA Tripping Current |
| H6837s | 40A 230V, 30mA Tripping Current |
| H6838s | 50A 230V, 30mA Tripping Current |



TYPE C ONE MODULE

| PART NO. | DESCRIPTION |
|---------------|---------------------------------|
| H8932s | 6A 230V, 30mA Tripping Current |
| H8933s | 10A 230V, 30mA Tripping Current |
| H8934s | 16A 230V, 30mA Tripping Current |
| H8935s | 20A 230V, 30mA Tripping Current |
| H8936s | 32A 230V, 30mA Tripping Current |
| H8937s | 40A 230V, 30mA Tripping Current |
| H8938s | 45A 230V, 30mA Tripping Current |
| H8939s | 50A 230V, 30mA Tripping Current |



TYPE B ONE MODULE

| PART NO. | DESCRIPTION | PART NO. | DESCRIPTION |
|---------------|--------------------------------|---------------|--------------------------------|
| H7932s | RCBO 6A 30MA Tripping Current | H7936s | RCBO 32A 30MA Tripping Current |
| H7933s | RCBO 10A 30MA Tripping Current | H7937s | RCBO 40A 30MA Tripping Current |
| H6910s | RCBO 16A 10MA Tripping Current | H7938s | RCBO 45A 30MA Tripping Current |
| H7934s | RCBO 16A 30MA Tripping Current | H7939s | RCBO 50A 30MA Tripping Current |
| H7935s | RCBO 20A 30MA Tripping Current | | |

Suitable for installation in MK Sentry Consumer Units. Positive contact status indication in accordance with 17th Edition IEE Wiring Regulations (537.2.2.2 and 537.3.2.2)

DIMENSIONS:
119 x 18 x 73mm

CABLE CAPACITY:
Live 25mm², neutral 25mm²

SHORT CIRCUIT BREAKING CAPACITY:
6KA, BS EN 61009-1, BS IEC 61009-2-2



Residential 6kA RCD Double Pole Type AC

16 AMP
TWO MODULE

| PART NO. | DESCRIPTION |
|---------------|---------------------------------|
| H7816s | 16A 230V, 30mA Tripping Current |

32 AMP
TWO MODULE

| PART NO. | DESCRIPTION |
|---------------|---------------------------------|
| H7832s | 32A 230V, 30mA Tripping Current |

40 AMP
TWO MODULE

| PART NO. | DESCRIPTION |
|---------------|---------------------------------|
| H7840s | 40A 230V, 30mA Tripping Current |

63 AMP
TWO MODULE

| PART NO. | DESCRIPTION |
|---------------|----------------------------------|
| H7860s | 63A 230V, 30mA Tripping Current |
| H7560s | 63A 230V, 100mA Tripping Current |
| H7660s | 63A 230V, 300mA Tripping Current |

80 AMP
TWO MODULE

| PART NO. | DESCRIPTION |
|---------------|----------------------------------|
| H7880s | 80A 230V, 30mA Tripping Current |
| H7580s | 80A 230V, 100mA Tripping Current |
| H7680s | 80A 230V, 300mA Tripping Current |

Suitable for installation in MK Sentry consumer units and two or four module enclosures.

Positive contact status indication in accordance with 17th Edition IET Wiring Regulations (537.2.2.2 and 537.3.2.2)

DIMENSIONS:
83 x 36 x 75mm

CABLE CAPACITY:
50mm²
BS EN 61008:1995



Industrial 6KA RCD Type A

TWO MODULE

| PART NO. | DESCRIPTION |
|---------------|--|
| H5680s | RCD DOUBLE POLE 80A 30MA |
| H5600s | RCD DOUBLE POLE 100A 30MA |
| H5700s | RCD DOUBLE POLE 100A 100MA |
| H6900s | RCD DOUBLE POLE 100A 100MA TYPE S+TYPE A |

Suitable for installation in MK Sentry consumer units and two or four module enclosures.

Positive contact status indication in accordance with 17th Edition IET Wiring Regulations (537.2.2.2 and 537.3.2.2)

DIMENSIONS:
83 x 18 x 74mm

CABLE CAPACITY:
35mm²

**SHORT-CIRCUIT
BREAKING CAPACITY:**
6KA
BS EN 60898:2003



Industrial 10kA RCDs Double Pole Type AC

16 AMP
TWO MODULE

| PART NO. | DESCRIPTION |
|---------------|---------------------------------|
| H6016s | 16A 110V, 10mA Tripping Current |
| H6416s | 16A 110V, 30mA Tripping Current |
| H6316s | 16A 230V, 10mA Tripping Current |
| H5716s | 16A 230V, 30mA Tripping Current |

Suitable for installation in MK Sentry consumer units and two or four module enclosures.

Positive contact status indication in accordance with 17th Edition IET Wiring Regulations (537.2.2.2 and 537.3.2.2)

DIMENSIONS:
83 x 36 x 75mm

CABLE CAPACITY:
50mm²
BS EN 61008:1995



Industrial 10kA RCDs Double Pole Type AC

32 AMP
TWO MODULE

| PART NO. | DESCRIPTION |
|---------------|---------------------------------|
| H6032s | 32A 110V, 30mA Tripping Current |
| H6730s | 32A 230V, 30mA Tripping Current |

Suitable for installation in MK Sentry consumer units and two or four module enclosures.

Positive contact status indication in accordance with 17th Edition IET Wiring Regulations (537.2.2.2 and 537.3.2.2)

DIMENSIONS:
83 x 36 x 75mm

CABLE CAPACITY:
50mm²
BS EN 61008:1995

40 AMP
TWO MODULE

| PART NO. | DESCRIPTION |
|---------------|---------------------------------|
| H5740s | 40A 230V, 30mA Tripping Current |

63 AMP
TWO MODULE

| PART NO. | DESCRIPTION |
|---------------|----------------------------------|
| H5760s | 63A 230V, 30mA Tripping Current |
| H6160s | 63A 230V, 100mA Tripping Current |
| H5860s | 63A 230V, 300mA Tripping Current |

80 AMP
TWO MODULE

| PART NO. | DESCRIPTION |
|---------------|----------------------------------|
| H6080s | 80A 110V, 30mA Tripping Current |
| H5780s | 80A 230V, 30mA Tripping Current |
| H6180s | 80A 230V, 100mA Tripping Current |
| H5880s | 80A 230V, 300mA Tripping Current |

100 AMP
TWO MODULE

| PART NO. | DESCRIPTION |
|---------------|-----------------------------------|
| H7700s | 100A 230V, 30mA Tripping Current |
| H6600s | 100A 230V, 100mA Tripping Current |
| H7800s | 100A 230V, 300mA Tripping Current |



Industrial 10kA RCDs Pulsating d.c. Fault Current Sensitive Double Pole Type AC

TWO MODULE

| PART NO. | DESCRIPTION |
|---------------|---------------------------------|
| H6216s | 16A 230V, 10mA Tripping Current |
| H6630s | 32A 230V, 30mA Tripping Current |
| H5640s | 40A 230V, 30mA Tripping Current |
| H5660s | 63A 230V, 30mA Tripping Current |

Suitable for installation in MK Sentry consumer units and two or four module enclosures.

Positive contact status indication in accordance with 17th Edition IET Wiring Regulations (537.2.2.2 and 537.3.2.2)

DIMENSIONS: 83 x 36 x 75mm
CABLE CAPACITY: 50mm²
BS EN 61008:1995



Industrial 10kA RCDs Time Delayed Double Pole

TWO MODULE

| PART NO. | DESCRIPTION |
|---------------|--|
| H6980s | 80A 230V, 100mA Tripping Current Time Delayed |
| H6400s | 100A 230V, 100mA Tripping Current Time Delayed |

Suitable for installation in MK Sentry consumer units and four module enclosures. When used as a mains incomer these units will provide discrimination with downstream instantaneous operating 10mA or 30mA RCDs. For example, they can be used as main incomers on split load consumer units where it is not desirable, because of the possibility of unwanted tripping, to place all of the circuits on an instantaneous 30mA RCD, but where earth leakage protection is still required for these circuits or where compliance is required to the indirect contact protection requirements of the IET Wiring Regulations.

DIMENSIONS: 81 x 36 x 76mm
CABLE CAPACITY: 50mm²
BS EN 61008:1995

NOT TO BE USED FOR PERSONAL PROTECTION AGAINST ELECTRIC SHOCK

www.circpro.co.uk



Industrial 10kA
RCDs
Four Pole
Type AC

25 AMP
FOUR MODULE

| PART NO. | DESCRIPTION |
|----------|-------------------------------------|
| H6425s | 25A 230/400V, 30mA Tripping Current |

40 AMP
FOUR MODULE

| PART NO. | DESCRIPTION |
|----------|--------------------------------------|
| H6440s | 40A 230/400V, 30mA Tripping Current |
| H6240s | 40A 230/400V, 100mA Tripping Current |

63 AMP
FOUR MODULE

| PART NO. | DESCRIPTION |
|----------|-------------------------------------|
| H6463s | 63A 230/240V 30mA Tripping Current |
| H6363s | 63A 230/400V 100mA Tripping Current |
| H6263s | 63A 230/400V 300mA Tripping Current |

Suitable for installation in MK Sentry four module enclosures.
Positive contact status indication in accordance with 17th Edition IET Wiring Regulations (537.2.2.2 and 537.3.2.2)

DIMENSIONS: 85 x 72 x 75mm
CABLE CAPACITY: 50mm²
BS EN 61008:1995



Industrial 10kA RCDs
Pulsating D.C.
Fault Current
Sensitive, Four
Pole Type A

FOUR MODULE

| PART NO. | DESCRIPTION |
|----------|------------------------------------|
| H6640s | 40A 230/400V 30mA Tripping Current |

Suitable for installation in MK Sentry two or four module enclosures.
Positive contact status indication in accordance with 17th Edition IET Wiring Regulations (537.2.2.2 and 537.3.2.2).

DIMENSIONS:
85 x 72 x 75mm

CABLE CAPACITY:
50mm²
BS EN 61008:1995



Contactors

ONE MODULE



| PART NO. | DESCRIPTION |
|---------------|---|
| H6220s | 20A DOUBLE POLE |
| H6720s | 20A DOUBLE POLE WITH MANUAL OVERRIDE |

Suitable for installation in MK Sentry consumer units and two or four module enclosures. Automatically switches higher loads than possible with a time switch eg; off peak tariffs.

A manual override enables the temporary setting of the contactor in either the on or off position in addition to normal automatic operation.

When a contactor is mounted alongside an MCB of greater than 10 amp current rating or two contactors are mounted alongside an MCB or side by side, it is necessary to insert a blank module between them (list no.H5544s).



TWO MODULE

| PART NO. | DESCRIPTION |
|---------------|--------------------|
| H6420s | 20A FOUR POLE |
| H7240s | 40A DOUBLE POLE |
| H7263s | 63A DOUBLE POLE |



THREE MODULE

| PART NO. | DESCRIPTION |
|---------------|------------------|
| H7440s | 40A FOUR POLE |
| H7463s | 63A FOUR POLE |

CONTACTOR RATINGS:

| LIST NO | H6220s H6420s H6720s | H7240s H7440s | H7263s H7463s |
|--|---|----------------------------------|----------------------------------|
| RATED CURRENT ITH | 20A | 40A | 63A |
| HEATING | | | |
| Single phase 230V | 5.4kW | 8.6kW | 13.6kW |
| Three phase 400V | 16kW | 26kW | 41kW |
| MOTORS | | | |
| Single phase 230V | 1.1kW | 2.2kW | 4kW |
| Three phase 400V | 4kW | 7.5kW | 11kW |
| LIGHTING | | | |
| Incandescent and Halogen lamps: | 2,800W | 7,000W | 10,000W |
| Fluorescent Lamps: (Electronic Ballast) | 2,000W | 4,200W | 6,300W |
| VOLTAGE RATING (coil) | 230V 50Hz | 230V 50Hz | 230V 50Hz |
| CABLE CAPACITY | 6mm ² rigid | 25mm ² rigid | 25mm ² rigid |
| BS EN 61095 | | | |
| DIMENSIONS | H6220s: 84 x 18 x 66mm | H6420s: 84 x 36 x 66mm | H6720s: 84 x 18 x 66mm |
| | H7240s: 84 x 36 x 66mm | H7263s: 84 x 36 x 66mm | H7440s: 84 x 54 x 66mm |
| | H7463s: 84 x 54 x 66mm (including half module blank) | | |



Bell
Transformer

TYPE B 30MA
TWO MODULE

| PART NO. | DESCRIPTION |
|----------|--|
| H5711s | RATING 1A AT 8V PRIMARY 220 – 240V A.C.50HZ |

Suitable for installation in MK Sentry consumer units and two or four module enclosures.

NOTE:
When installed in a consumer unit, ensure that output cables inside the enclosures are suitable for a 230V environment, either by sleeving the bell wire to BS 2848 or using 230V cable. Complete with terminal covers. Also suitable for surface mounting.

DIMENSIONS
88 x 36 x 67mm

CABLE CAPACITY
1 x 2.5mm²
EN 61558-2-8



Time
Switches

SYNCHRONOUS
THREE MODULE

| PART NO. | DESCRIPTION |
|----------|---|
| H5707s | 7 DAY DIAL MIN SETTING 3 HOURS |
| H5724s | 24 HOUR DIAL MIN SETTING 30 MINUTES |

Suitable for DIN rail mounting in MK Sentry consumer units or four module enclosures.

VOLTAGE RATING
220-240Va.c. 50Hz

CURRENT RATING
Resistive load 16A
Inductive load 4A
Tungsten lamps 6A (1350W)
Fluorescent lamps 1350W

DIMENSIONS
85 x 54 x 68mm

CABLE CAPACITY
2 x 2.5mm² or 4 x 1.5mm²

QUARTZ STABILISED
THREE MODULE

| PART NO. | DESCRIPTION |
|----------|---|
| H5824s | 24 HOUR DIAL MIN SETTING 30 MINUTES |

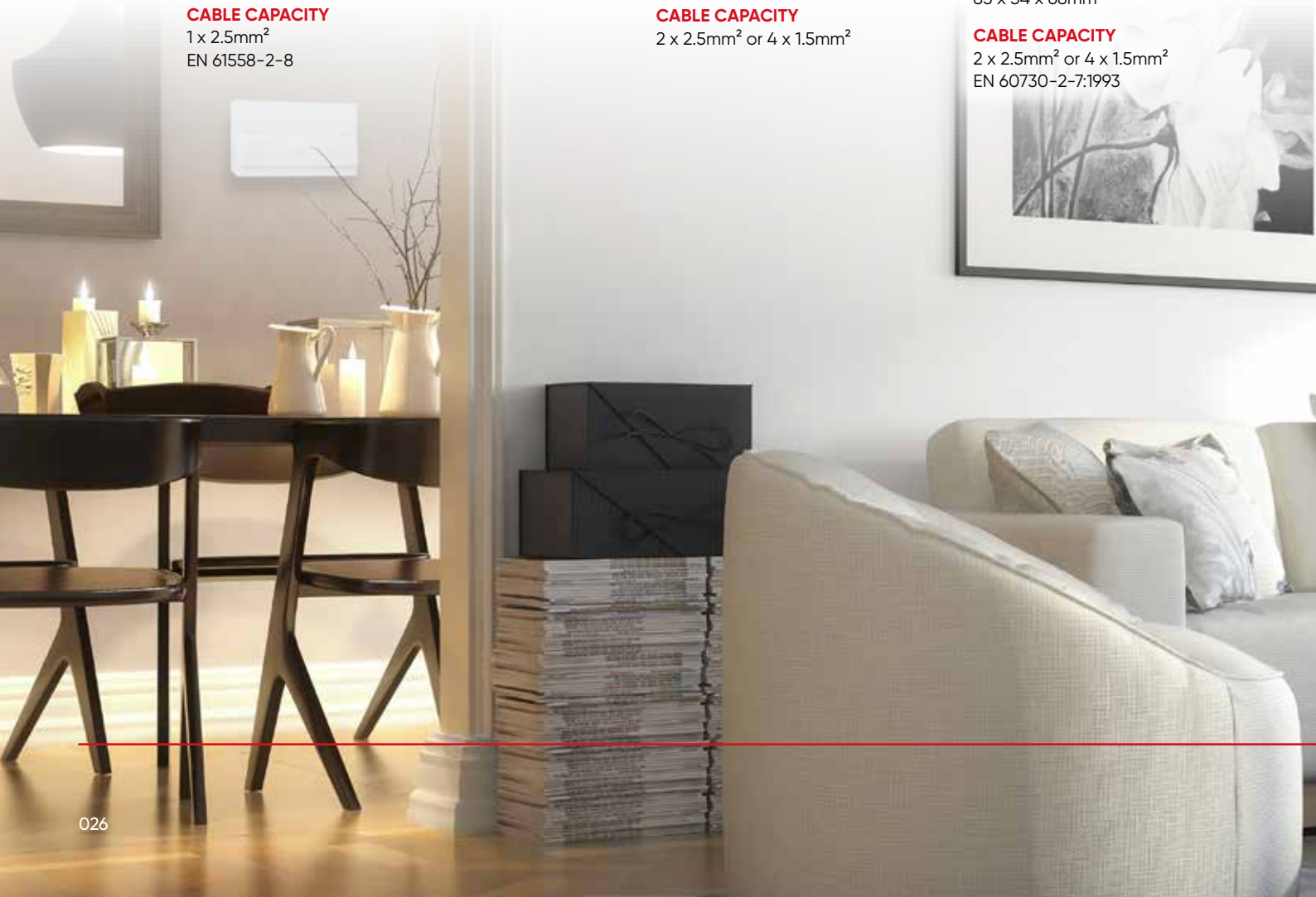
Suitable for DIN rail mounting in MK Sentry consumer units and two or four module enclosures. Power reserve 150 hours.

VOLTAGE RATING
220-240Va.c. 50Hz

CURRENT RATING
Resistive load 16A
Inductive load 4A
Tungsten lamps 6A (1350W)
Fluorescent lamps 1350W

DIMENSIONS
85 x 54 x 68mm

CABLE CAPACITY
2 x 2.5mm² or 4 x 1.5mm²
EN 60730-2-7:1993



Time Switches

QUARTZ STABILISED THREE MODULE



| PART NO. | DESCRIPTION |
|---------------|--|
| H5833s | 24 HOUR DIAL MIN SETTING 30 MINUTES |

Suitable for DIN rail mounting in MK Sentry consumer units and two or four module enclosures.

VOLTAGE RATING

240V 50Hz

CURRENT RATING

Resistive load 16A

Inductive load 4A

Tungsten lamps 6A (1350W)

Fluorescent lamps 1350W

DIMENSIONS

90 x 18 x 68mm

CABLE CAPACITY

2 x 2.5mm² or 4 x 1.5mm²

EN 60730-2-7:1993



| PART NO. | DESCRIPTION |
|---------------|---|
| H5731s | 24 HOUR/ 7 DAY DISPLAY MIN SETTING 1 MINUTE |

Pre-programmed with UK time and automatic summer/winter adjustment. Provides 50 programming selections.

Freely selectable day grouping facility. Manual override, winter/summer time adjustment. Power reserve of three years.

Suitable for DIN-rail mounting in MK Sentry Consumer Units and two or four module enclosures.

VOLTAGE RATING

240V 50/60Hz

CURRENT RATING

Resistive load 16A

Inductive load 2.5A

Tungsten lamps 5A (1000W)

Fluorescent lamps 1000W

DIMENSIONS

85 x 36 x 68mm

CABLE CAPACITY

2 x 2.5mm² or 4 x 1.5mm²

EN 60730-2-7:1993



| PART NO. | DESCRIPTION |
|---------------|--|
| H5733s | 24 HOUR DIAL MIN SETTING 1 MINUTE |

Provides 50 programming selections. Freely selectable day grouping facility. Manual override, winter/summer time adjustment, holiday programme and random generator are standard facilities. Power reserve of 150 hours.

Suitable for DIN rail mounting in MK Sentry Consumer Units and two or four module enclosures.

VOLTAGE RATING

240V 50/60Hz

CURRENT RATING

Resistive load 16A

Inductive load 2.5A

Tungsten lamps 5A (1000W)

Fluorescent lamps 1000W

DIMENSIONS

90 x 18 x 74mm

CABLE CAPACITY

2 x 2.5mm² or 4 x 1.5mm²

EN 60730-2-7:1993



| PART NO. | DESCRIPTION |
|---------------|---|
| H5732s | 24 HOUR/ 7 DAY DISPLAY MIN SETTING 1 MINUTE |

Pre-programmed with UK time and automatic summer/winter adjustment. Provides 50 programming selections.

Freely selectable day grouping facility. Manual override, winter/summer time adjustment. Power reserve of three years.

Suitable for DIN-rail mounting in MK Sentry Consumer Units and two or four module enclosures.

VOLTAGE RATING

240V 50/60Hz

CURRENT RATING

Resistive load 16A

Inductive load 2.5A

Tungsten lamps 5A (1000W)

Fluorescent lamps 1000W

DIMENSIONS

85 x 36 x 68mm

CABLE CAPACITY

2 x 2.5mm² or 4 x 1.5mm²

EN 60730-2-7:1993



Time Switches

| PART NO. | DESCRIPTION |
|----------------|--|
| H55650s | DELAY RANGE 1 - 7 MINUTES (APPROX) |

Suitable for installation in MK Sentry consumer units and two or four module enclosures. Offers time delay control for complete circuits of either tungsten or fluorescent lighting with any number of standard push switches. It can also be used to control fans in bathrooms without a window. Delay setting can be over-ridden by setting to 'Perm-on' mode, or by fitting a remote overriding switch.

Switch has a switching capacity of 16A resistive loads (upf) fluorescent lamps uncompensated series compensated 1300W.

Parallel compensated 480W CFLS 100W max.

Maximum of nine units can be connected Incandescent lamps 2000W neon glow lamp load (locating lamp for push switch) 50mA max.

VOLTAGE RATING:
230V 50Hz

DIMENSIONS
84 x 18 x 70mm

CABLE CAPACITY
1 x 4mm² or 2 x 1.5mm²



| PART NO. | DESCRIPTION |
|---------------|--|
| H5563s | SPLIT-LOAD KIT CONSISTS OF 3 CABLES (2 NEUTRAL AND 1 LIVE) FOR USE WHEN ASSEMBLING A SPLIT LOAD ARRANGEMENT |
| H5565s | MULTI-INCOMER KIT CONSISTS OF A BLUE FLEXIBLE CABLE WITH PRE-FITTED TERMINAL FOR THE NEUTRAL RETURN FROM SWITCH OR RCD TO SECOND OR THIRD NEUTRAL BAR |
| H5568s | 17TH EDITION CABLE KIT FOR SWITCH AND TWIN RCD ARRANGEMENT |
| H5567s | A&D CABLE KIT FOR SWITCH PLUS TRIPLE RCD ARRANGEMENT |



| PART NO. | DESCRIPTION |
|---------------|---|
| H5563s | FOR USE WHEN ASSEMBLING SPLIT-LOAD ARRANGEMENT |
| H5565s | FOR USE WHEN ASSEMBLING A CONSUMER UNIT IN A MULTI-INCOMER ARRANGEMENT WITH SEPARATE SUPPLY TO EACH INCOMER. THESE KITS MUST BE USED TO ENSURE COMPLIANCE WITH BS EN 60439-3 |
| H5569s | 18TH EDITION CABLE KIT FOR SURGE AND TWIN RCD |
| H5561S | CABLE KIT FOR STACKED SENTRY UNITS |

H5563s
For use when assembling split-load arrangement.

H5565s
For use when assembling a consumer unit in a multi-incomer arrangement with separate supply to each incomer.
These kits must be used to ensure compliance with BS EN 60439-3
1 x 4mm² or 2 x 1.5mm²

Accessories



PART NO. **H5562s**

DESCRIPTION

EXTENSION TERMINAL FOR USE WHEN ASSEMBLING A CONSUMER UNIT AS A DISTRIBUTION BOARD. ENABLES DIRECT CONNECTION OF CABLES TO THE NEUTRAL BAR. CONSISTS OF A 25MM² CAPACITY TERMINAL WITH CLAMP SCREW



PART NO. **H8041s**

DESCRIPTION

LOCKING DEVICE FOR USE WHEN LOCKING A SENTRY MCB, RCBO, RCD OR SWITCH DISCONNECTOR IN EITHER THE ON OR OFF POSITION



PART NO. **H5593s**

DESCRIPTION

BARREL LOCK AND KEY KIT SUITABLE FOR SECURING 'Y' SERIES SENTRY CONSUMER UNIT LIDS. ONLY SUITABLE FOR HYBRID AND INSULATED CONSUMER UNITS



PART NO. **H5544s**

DESCRIPTION

MCB BLANK – GREY DESIGNED TO FILL UNUSED MODULES IN MK SENTRY CONSUMER UNITS AND SMALL ENCLOSURES. DIN-RAIL MOUNTED



PART NO. **H5545s WHI**

DESCRIPTION

COVER MOUNTED BLANK FOR FILLING SPACES IN THE 'Y' SERIES SENTRY CONSUMER UNIT COVER, WHERE THERE ARE UNUSED MODULES



PART NO. **H5511s**

DESCRIPTION

BUSBAR 11 MODULE



PART NO. **H5590s**

DESCRIPTION

BUSBAR 20 MODULE



PART NO. **HAX26s**

DESCRIPTION

BUSBAR COVER SUITABLE FOR INSULATING THE BUSBARS K5511S AND **H5590S 10** MODULE

ONLY SUITABLE FOR HYBRID AND INSULATED CONSUMER UNITS



PART NO. **H5597s**

DESCRIPTION

CONSUMER UNIT LABELS ADDITIONAL PRINTED AND BLANK LABELS, FOR IDENTIFYING DEVICES AND CIRCUITS ON DUAL AND TRIPLE RCD BOARDS



PART NO. **H5599s**

DESCRIPTION

CONSUMER UNIT LABELS ADDITIONAL PRINTED AND BLANK LABELS, FOR IDENTIFYING DEVICES AND CIRCUITS ON SINGLE RCD BOARDS

REPLACEMENT PLASTIC FRONT COVERS



PART NO. **H6060sMET**

DESCRIPTION

16 WAY METAL CONSUMER UNIT SURFACE MOUNTING KIT



PART NO. **H6061sMET**

DESCRIPTION

12 WAY METAL CONSUMER UNIT STACKING KIT



PART NO. **H6062sMET**

DESCRIPTION

16 WAY METAL CONSUMER UNIT STACKING KIT



PART NO. **H6063sMET**

DESCRIPTION

21 WAY METAL CONSUMER UNIT STACKING KIT



CIRCPRO™

Tel: 01708 986180

Email: enquiries@circpro.co.uk

www.circpro.co.uk

Edition 1 2020