



MK SENTRY CATALOGUE

MK SENTRY RANGE INTRODUCTION

The MK Sentry circuit protection product range has been in production for more than 40 years and through the license agreement its continued supply into the market is guaranteed.

The extensive range fully complies with the requirements of the Wiring Regulations, and has the same full guarantees previously received with the offering.

The MK Sentry range of consumer units have been stylishly designed to blend in with its environment. The curved lines and slim line appearance mean it won't look out of place when installed in hallways, lounges or kitchens.



SUPPORTS LATEST BS7671:2018

Full range of products to support compliance with the latest edition of the Wiring Regulations, including full metal non-combustible enclosures for Consumer Units.



GUARANTEE

All products are guaranteed for 10 years. Offering all of the key products to complete an installation.





A WIDE SELECTION OF PRE-ASSEMBLED SPLIT LOAD UNITS AVAILABLE

Suits a variety of applications and saves installation time.



DESIGNED FOR SPEEDY INSTALLATION

Backed out and captive main combi-head screws and colour-coded earth and neutral terminals. Additional height for circuit cable connection.

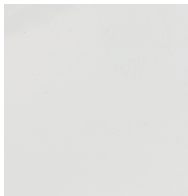


FLOATING BUSBAR SYSTEM

Gives maximum installation flexibility.



FEATURES AND BENEFITS



MANUFACTURED FROM CORROSION AND FIRE RESISTANT MATERIAL

Corrosion and fire resistant material, which ensures full compliance with latest legislation.



MULTIPLE EXTRA LARGE KNOCK OUTS

Aides and eases installation.



CURVED STYLISH DESIGN

Blends into the environment.



TOP HINGED DOOR

Prevents door being left open after use leading to a possible fire risk
Earth continuity provided through hinge mechanism
no additional cable required.



WHITE COLOUR

Modernised aesthetics for visible installations. Design service available for bespoke requests.

CONTINUAL EARTHING

Only need to earth once via the base.

CONSUMER UNIT SELECTION GUIDE

STEP 1	Determine the type of consumer unit configuration required. e.g split load, standard or combination of split load / single RCD or dual RCD. For each switch disconnector or RCD to be used allow 2 modular ways.
STEP 2	Determine the number of outgoing circuits required. e.g cooker, lighting, ring main etc. For each circuit to be protected by an MCB or RCBO allow 1 modular way.
STEP 3	Determine the number of 'spare' modular ways required for future upgrades. For each 'spare' modular way select 1 sentry blank module – H5545S (cover mounted blanks supplied with consumer units).
STEP 4	Now add together the total number of modular ways required.
STEP 5	Select from our range of metal surface, recessed or stacked consumer units (using standard consumer units plus stacking kits). Choose the type and size most appropriate for your requirements.

FEATURES AND BENEFITS



BACKED OUT AND CAPTIVE COMBI-HEAD SCREWS

Allows simple and speedy installation.



EASILY REMOVABLE DIN RAIL

Simplifying and easing first fix.



SUPPORTING DIN RAIL "T" BAR

Additional support to prevent bowing and twisting which has been raised for Improved cable routing.



OFFSET INCOMER

Provides additional wiring space making mains input connections easier.



SURGE PROTECTION DEVICE (SPD)

SPD compatibility tested with MK Sentry boards and devices.

COLOUR CODED EARTH AND NEUTRAL TERMINAL

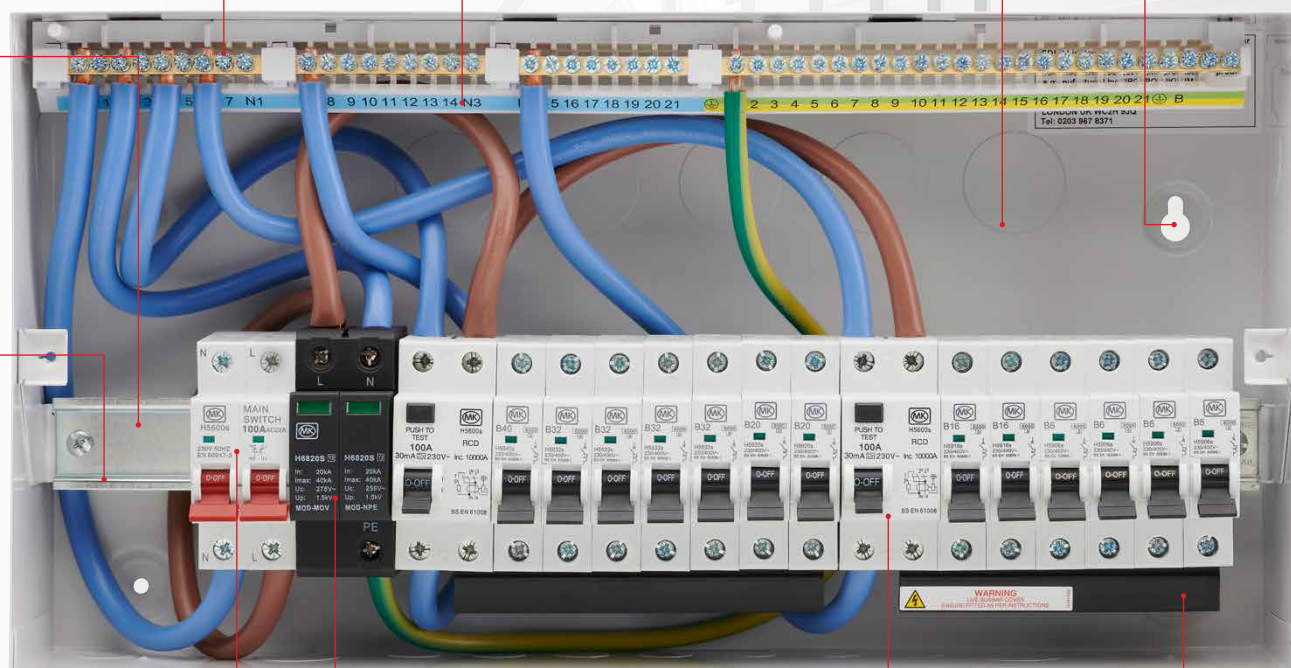
At top of unit for ease of wiring.

ADDITIONAL WIRING SPACE

240mm height for increased wiring space.

FIXING HOLES

Tripod fixing to cope with uneven surfaces.



FLOATING BUSBAR SYSTEM

Gives maximum installation flexibility.



TYPE AC RCD

Detects AC fault currents only.

Applicable to loads without electronic components such as immersion heaters, electronic showers, oven/hobs with resistive heating elements.

TYPE A RCD

Detects AC fault currents and pulsating DC components.

Applicable for single phase invertors, induction hobs, power supplies for class 2 equipment, class 1 IT and multimedia equipment and applicable (x2) such as washing machines that are not frequency controlled e.g. DC or universal motor.

MK SENTRY RANGE INTRODUCTION



POPULATED UNITS

The pre-populated range of consumer units offers an off the shelf alternative available in 5 different sizes.



MCB

Available as Type B and C curve. Current range 3A with a breaking capacity of 6kA.



ENCLOSURES

The empty consumer units enable specific configurations to suit required applications with the use of MCB's, RCD, RCBO and surge devices.

RCD

Available as Type AC and A. Current range of 25A-100A and tripping capacity 10mA to 300mA. Breaking capacity 10kA.



RCBO

Available as Type B and C MCB curve, RCD Type AC and A. Current range 6A-50A and tripping current 30mA. Breaking capacity 6kA and 10kA.



SURGE

Recommended for all low voltage electrical installations, it prevents the spread of over voltages in the electrical installations and protects the load.



Consumer Units

METAL
ENCLOSURE ONLY
RECESSED



YR5608sMET
8 WAY ENCLOSURE
ACCEPTS 8 ONE
MODULE PRODUCTS
(1 INTEGRAL NEUTRAL BAR)



YR5616sMET
16 WAY ENCLOSURE ACCEPTS
16 ONE MODULE PRODUCTS
(2 INTEGRAL NEUTRAL BARS
FITTED WITH LINKS)



YR5612sMET
12 WAY ENCLOSURE
ACCEPTS 12 ONE
MODULE PRODUCTS
(1 INTEGRAL NEUTRAL BAR)



YR5621sMET
21 WAY ENCLOSURE
ACCEPTS 21 ONE
MODULE PRODUCTS
(3 INTEGRAL NEUTRAL BARS
FITTED WITH LINKS)

Scan



For further details

DIMENSIONS:

	Width	Height	Depth
8 WAY	238 x	240 x	95-155mm
12 WAY	310 x	240 x	95-155mm
16 WAY	382 x	240 x	95-155mm
21 WAY	472 x	240 x	95-155mm



Consumer Units

METAL
ENCLOSURE ONLY
SURFACE



Y5604sMET
4 WAY ENCLOSURE
ACCEPTS 4 ONE
MODULE PRODUCTS
(1 INTEGRAL NEUTRAL BAR)



Y5616sMET
16 WAY ENCLOSURE
ACCEPTS 16 ONE
MODULE PRODUCTS
(3 INTEGRAL NEUTRAL
BARS FITTED WITH LINKS)



Y5608sMET
8 WAY ENCLOSURE
ACCEPTS 8 ONE
MODULE PRODUCTS
(1 INTEGRAL NEUTRAL BAR)



Y5621sMET
21 WAY ENCLOSURE
ACCEPTS 21 ONE
MODULE PRODUCTS
(3 INTEGRAL NEUTRAL
BARS FITTED WITH LINKS)



Y5612sMET
12 WAY ENCLOSURE
ACCEPTS 8 ONE
MODULE PRODUCTS
(2 INTEGRAL NEUTRAL
BARS FITTED WITH LINKS)

Scan



For further details

DIMENSIONS:

	Width	Height	Depth
4 WAY	144 x	244 x	116mm
8 WAY	238 x	244 x	116mm
12 WAY	310 x	244 x	116mm
16 WAY	382 x	244 x	116mm
21 WAY	472 x	244 x	116mm



Consumer Units

METAL
ENCLOSURE + 100A SWITCH DISCONNECTOR
SURFACE



Y5704sMET
4 WAY ENCLOSURE
100A SDC
ACCEPTS A FURTHER 2
ONE MODULE PRODUCTS



Y5716sMET
16 WAY ENCLOSURE
100A SDC
ACCEPTS A FURTHER 14
ONE MODULE PRODUCTS



Y5708sMET
8 WAY ENCLOSURE
100A SDC
ACCEPTS A FURTHER 6
ONE MODULE PRODUCTS



Y5721sMET
21 WAY ENCLOSURE
100A SDC
ACCEPTS A FURTHER 19
ONE MODULE PRODUCTS



Y5712sMET
12 WAY ENCLOSURE
100A SDC
ACCEPTS A FURTHER 10
ONE MODULE PRODUCTS

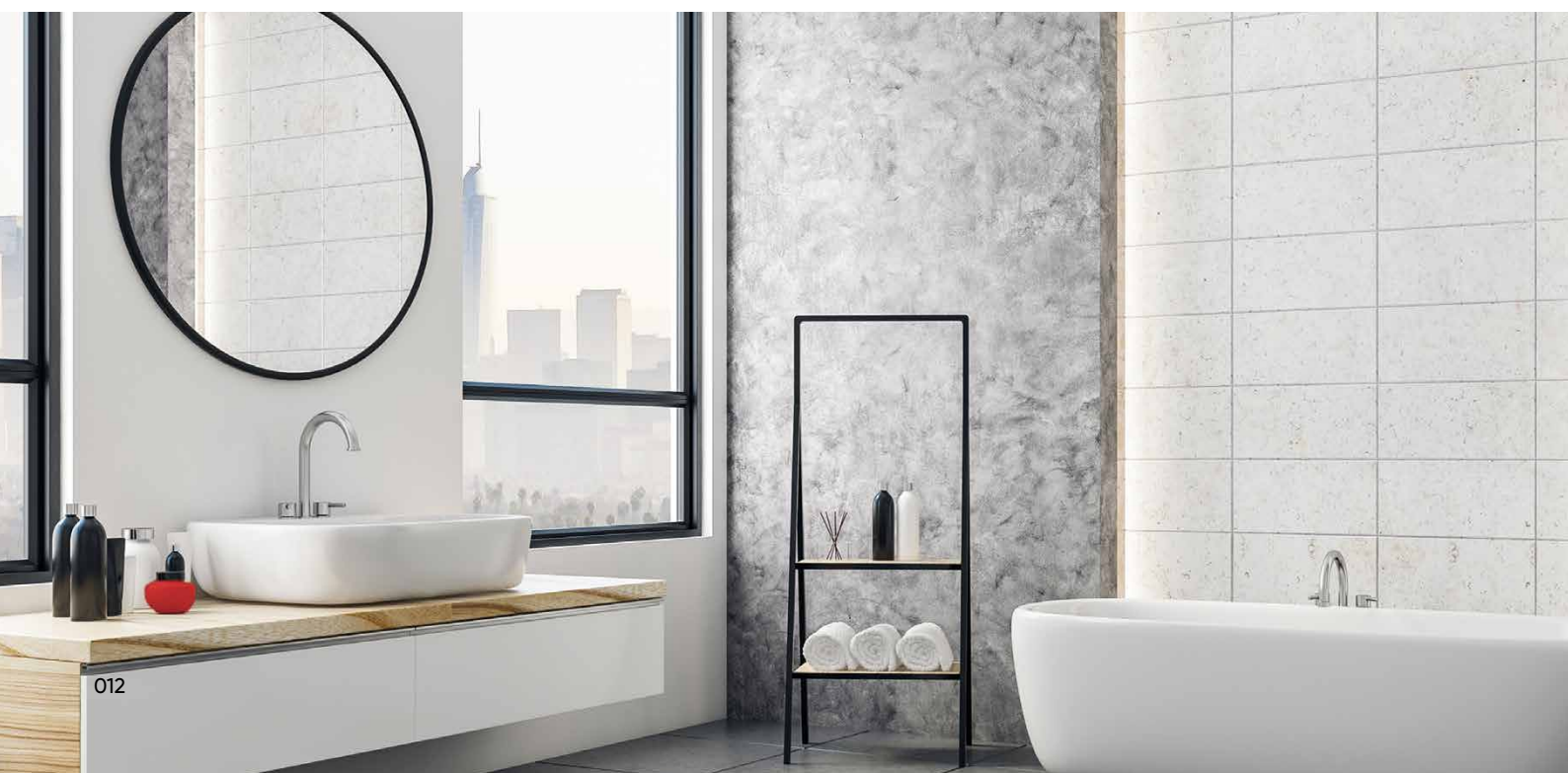
Scan



For further details

DIMENSIONS:

	Width	Height	Depth
4 WAY	144 x	244 x	116mm
8 WAY	238 x	244 x	116mm
12 WAY	310 x	244 x	116mm
16 WAY	382 x	244 x	116mm
21 WAY	472 x	244 x	116mm



Consumer Units

METAL

SPLIT-LOAD ENCLOSURE + 100A SWITCH DISCONNECTOR + TYPE AC SINGLE RCD

SURFACE



Y5682sMET
12 WAY ENCLOSURE
100A SDC
63A 30MA RCD
ACCEPTS A FURTHER 8
ONE MODULE PRODUCTS



Y5689sMET
16 WAY ENCLOSURE
100A SDC
63A 30MA RCD
ACCEPTS A FURTHER 12
ONE MODULE PRODUCTS



Y5662sMET
12 WAY ENCLOSURE
100A SDC
80A 30MA RCD
ACCEPTS A FURTHER 8
ONE MODULE PRODUCTS



Y5684sMET
21 WAY ENCLOSURE
100A SDC
80A 30MA RCD
ACCEPTS A FURTHER 17
ONE MODULE PRODUCTS



Y5685sMET
16 WAY ENCLOSURE
100A SDC
80A 30MA RCD
ACCEPTS A FURTHER 12
ONE MODULE PRODUCTS

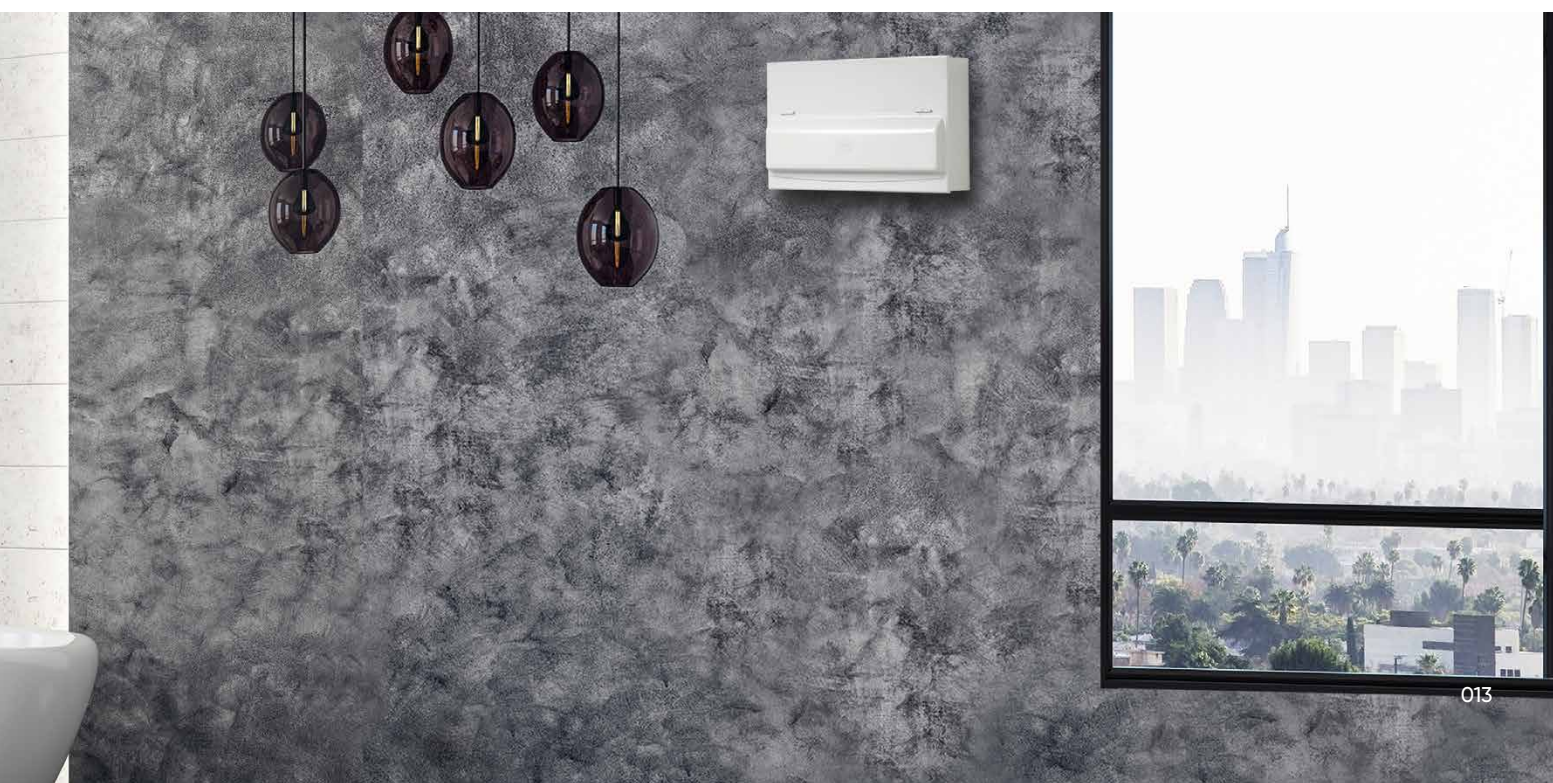
Scan



For further details

DIMENSIONS:

	Width	Height	Depth
12 WAY	310 x	244 x	116mm
16 WAY	382 x	244 x	116mm
21 WAY	472 x	244 x	116mm



Consumer Units

METAL

SPLIT-LOAD ENCLOSURE + 100A SWITCH
DISCONNECTOR + TYPE AC DUAL RCD

SURFACE



Y5666sMET
16 WAY ENCLOSURE
100A SDC
2 X 63A 30MA RCD
ACCEPTS A FURTHER 10
ONE MODULE PRODUCTS



Y5688sMET
16 WAY ENCLOSURE
100A SDC
2 X 80A 30MA RCD
ACCEPTS A FURTHER 10
ONE MODULE PRODUCTS



Y5686sMET
16 WAY ENCLOSURE
100A SDC
1 X 63A AND 1 X 80A 30MA RCD
ACCEPTS A FURTHER 10
ONE MODULE PRODUCTS



Y5683sMET
21 WAY ENCLOSURE
100A SDC
2 X 63A 30MA RCD
ACCEPTS A FURTHER 15
ONE MODULE PRODUCTS



Y5687sMET
21 WAY ENCLOSURE
100A SDC
2 X 80A 30MA RCD
ACCEPTS A FURTHER 15
ONE MODULE PRODUCTS



Y5681sMET
21 WAY ENCLOSURE
100A SDC
1 X 63A AND 1 X 80A 30MA RCD
ACCEPTS A FURTHER 15
ONE MODULE PRODUCTS

METAL

FULLY POPULATED ENCLOSURE
+ TYPE AC RCD

SURFACE



Y6550sMET
4 WAY ENCLOSURE
63A 30MA RCD
2 X MCBs (1 X 6A AND
1 X 16A)



Y6551sMET
4 WAY ENCLOSURE
63A 30MA RCD
1 X MCB (1 X 50A)



Y6552sMET
8 WAY ENCLOSURE
63A 30MA RCD
6 X MCBs (3 X 6A, 1 X 16A AND
2 X 20A)

Scan



For further details

DIMENSIONS:

	Width	Height	Depth
4 WAY	144 x	244 x	116mm
8 WAY	238 x	244 x	116mm
16 WAY	382 x	244 x	116mm
21 WAY	472 x	244 x	116mm



Consumer Units

METAL

FULLY POPULATED SPLIT LOAD ENCLOSURE

+ 100A SWITCH DISCONNECTOR + TYPE AC SINGLE/DUAL RCD OR RCBO

SURFACE



Y7663sMET

12 WAY ENCLOSURE
100A SDC
63A 30MA RCD
6 X MCBs (2 X 6A, 2 X 16A
AND 2 X 32A)
2 X RCBOs (1 X 6A AND 1 X 40A)



Y7665sMET

16 WAY ENCLOSURE
100A SDC
2 X 63A 30MA RCD
8 X MCBs (2 X 6A, 2 X 16A,
3 X 32A AND 1 X 40A)
ACCEPTS A FURTHER 2
ONE MODULE PRODUCTS



Y7673sMET

12 WAY ENCLOSURE
100A SDC
6 X RCBOs (2 X 6A, 1 X 16A,
2 X 32A AND 1 X 40A)
ACCEPTS A FURTHER 4
ONE MODULE PRODUCTS



Y7666sMET

16 WAY ENCLOSURE
100A SDC
2 X 63A 30MA RCD
10 X MCBs (3 X 6A, 2 X 16A,
4 X 32A AND 1 X 40A)



Y7664sMET

12 WAY ENCLOSURE
100A SDC
2 X 63A 30MA RCD
6 X MCBs (2 X 6A, 1 X 16A,
2 X 32A AND 1 X 40A)



Y7678sMET

21 WAY ENCLOSURE
100A SDC
1 X 63A AND 1 X 80A 30MA RCD
12 X MCBs (3 X 6A, 2 X 16A,
2 X 20A, 4 X 32A AND 1 X 40A)
ACCEPTS A FURTHER 3
ONE MODULE PRODUCTS

Scan



For further details

DIMENSIONS:

	Width	Height	Depth
12 WAY	310 x	244 x	116mm
16 WAY	382 x	244 x	116mm
21 WAY	472 x	244 x	116mm

- * RCD's Type AC
- * MCB's SP B Curve
- * RCBO's SP B Curve Type AC



Consumer Units

METAL

FULLY POPULATED SPLIT LOAD ENCLOSURE + 100A SWITCH DISCONNECTOR + TYPE A RCD

SURFACE



Y8664sMET

12 WAY ENCLOSURE
100A SDC
2 X 100A 30MA RCD
6 X MCBs (2 X 6A, 1 X 16A,
2 X 32A AND 1 X 40A)



Y8666sMET

16 WAY ENCLOSURE
100A SDC
2 X 100A 30MA RCD
10 X MCBs (3 X 6A, 2 X 16A, 4 X 32A
AND 1 X 40A)



Y8665sMET

16 WAY ENCLOSURE
100A SDC
2 X 100A 30MA RCD
8 X MCBs (2 X 6A, 2 X 16A,
3 X 32A AND 1 X 40A)
ACCEPTS A FURTHER 2
ONE MODULE PRODUCTS



Y8678sMET

21 WAY ENCLOSURE
100A SDC
2 X 100A 30MA RCD
12 X MCBs (3 X 6A, 2 X 16A,
2 X 20A, 4 X 32A AND 1 X 40A)
ACCEPTS A FURTHER 3
ONE MODULE PRODUCTS

Scan



For further details

DIMENSIONS:

	Width	Height	Depth
12 WAY	310 x	244 x	116mm
16 WAY	382 x	244 x	116mm
21 WAY	472 x	244 x	116mm

* RCD's Type A

* MCB's SP B Curve



Consumer Units

METAL

ENCLOSURE + 100A SWITCH DISCONNECTOR + SURGE DEVICE

SURFACE



YS5708sMET

8 WAY ENCLOSURE
100A SDC
1X SURGE
ACCEPTS A FURTHER 4
ONE MODULE PRODUCTS



YS5716sMET

16 WAY ENCLOSURE
100A SDC
1 X SURGE
ACCEPTS A FURTHER 12
ONE MODULE PRODUCTS



YS5712sMET

12 WAY ENCLOSURE
100A SDC
1 X SURGE
ACCEPTS A FURTHER 8
ONE MODULE PRODUCTS



YS5721sMET

21 WAY ENCLOSURE
100A SDC
1 X SURGE
ACCEPTS A FURTHER 17
ONE MODULE PRODUCTS

Scan



For further details

DIMENSIONS:

	Width	Height	Depth
8 WAY	238 x	244 x	116mm
12 WAY	310 x	244 x	116mm
16 WAY	382 x	244 x	116mm
21 WAY	472 x	244 x	116mm



Consumer Units

METAL

FULLY POPULATED ENCLOSURE + 100A SWITCH
DISCONNECTOR + SURGE DEVICE + TYPE A RCD

SURFACE



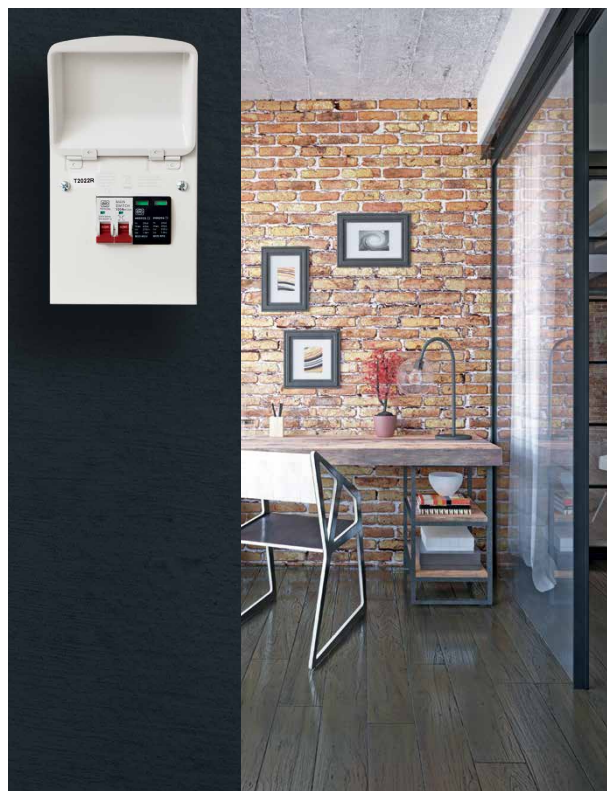
YS5704sMET
4 WAY ENCLOSURE
100A SDC
1 X SURGE



YS8666sMET
16 WAY ENCLOSURE
100A SDC
2 X 100A 30MA RCD
8 X MCBs (2 X 6A, 2 X 16A, 3 X 32A, 1 X 40A)
1 X SURGE



YS8678sMET
21 WAY ENCLOSURE
100A SDC
2 X 100A 30MA RCD
12 MCBs (3 X 6A, 2 X 16A, 2 X 20A,
4 X 32A, 1 X 40A)
1 X SURGE



Scan



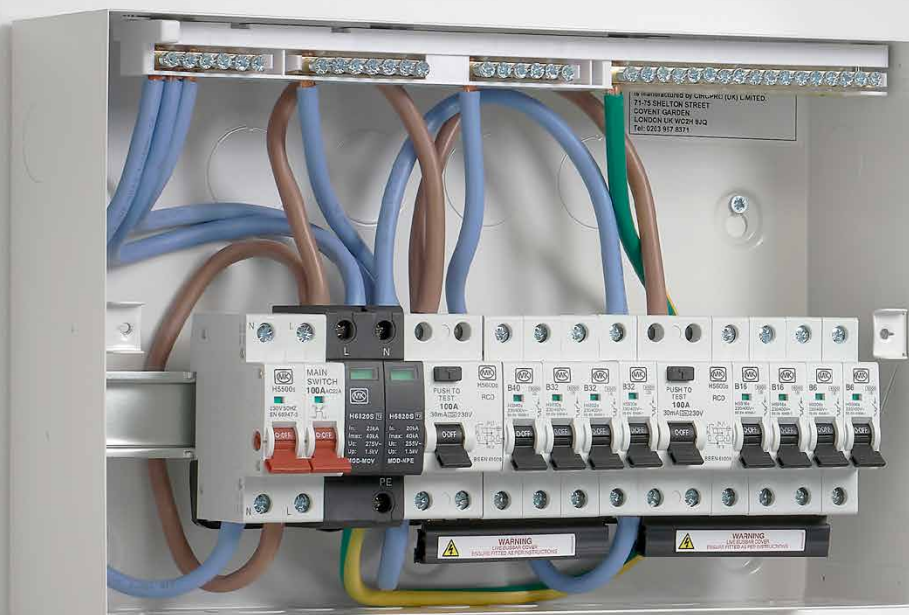
For further details

DIMENSIONS:

	Width	Height	Depth
4 WAY	144 x	244 x	116mm
16 WAY	382 x	244 x	116mm
21 WAY	472 x	244 x	116mm

* RCD's Type A

* MCB's SP B Curve





Switch Disconnectors Double Pole

TWO MODULE

PART NO.	DESCRIPTION
H5500s	100A 230V
H5560s	63A 230V
DIMENSIONS:	CABLE CAPACITY:
83 x 36 x 76mm	50mm ²



MCBs Single Pole

TYPE B CURVE ONE MODULE

PART NO.	DESCRIPTION	PART NO.	DESCRIPTION
H5903s	3A 230V	H5932s	32A 230V
H5906s	6A 230V	H5940s	40A 230V
H5910s	10A 230V	H5945s	45A 230V
H5916s	16A 230V	H5950s	50A 230V
H5920s	20A 230V	H5963s	63A 230V
H5925s	25A 230V		



Surge Device

PART NO.	DESCRIPTION
H6820s	TYPE 2 SURGE DEVICE
H6820s-1	NEUTRAL REPLACEMENT CARTRIDGE
H6820s-2	LINE REPLACEMENT CARTRIDGE
DIMENSIONS:	CABLE CAPACITY:
83 x 36 x 76mm	25mm ²



TYPE C CURVE ONE MODULE

PART NO.	DESCRIPTION	PART NO.	DESCRIPTION
H8703s	3A 230V	H8725s	25A 230V
H8706s	6A 230V	H8732s	32A 230V
H8710s	10 230V	H8740s	40A 230V
H8716s	16A 230V	H8750s	50A 230V
H8720s	20A 230V	H8763s	63A 230V

Suitable for installation in MK Sentry Consumer Units.
Positive contact status indication.

DIMENSIONS:	CABLE CAPACITY:	SHORT-CIRCUIT BREAKING CAPACITY:
83 x 18 x 79mm	25mm ²	6KA





RCBOs With Solid Neutral Single Pole 6kA TYPE AC

B CURVE
ONE MODULE

PART NO.	DESCRIPTION
H7932s	6A 230V, 30mA Tripping Current
H7933s	10A 230V, 30mA Tripping Current
H7934s	16A 230V, 30mA Tripping Current
H7935s	20A 230V, 30mA Tripping Current
H6310s	32A 230V, 10mA Tripping Current
H7936s	32A 230V, 30mA Tripping Current
H7937s	40A 230V, 30mA Tripping Current
H7938s	45A 230V, 30mA Tripping Current
H7939s	50A 230V, 30mA Tripping Current



C CURVE
ONE MODULE

PART NO.	DESCRIPTION
H8932s	6A 230V, 30mA Tripping Current
H8933s	10A 230V, 30mA Tripping Current
H8934s	16A 230V, 30mA Tripping Current
H8935s	20A 230V, 30mA Tripping Current
H8936s	32A 230V, 30mA Tripping Current
H8937s	40A 230V, 30mA Tripping Current
H8938s	50A 230V, 30mA Tripping Current



RCBOs With Solid Neutral Single Pole 6kA TYPE A

B CURVE
ONE MODULE

PART NO.	DESCRIPTION
H6832s	6A 230V, 30mA Tripping Current
H6833s	10A 230V, 30mA Tripping Current
H6834s	16A 230V, 30mA Tripping Current
H6835s	20A 230V, 30mA Tripping Current
H6836s	32A 230V, 30mA Tripping Current
H6837s	40A 230V, 30mA Tripping Current
H6838s	50A 230V, 30mA Tripping Current

Suitable for installation in MK Sentry Consumer Units.
Positive contact status indication.

DIMENSIONS:	CABLE CAPACITY:	SHORT CIRCUIT BREAKING CAPACITY:
114 x 18 x 79mm	Live In 25mm ² Neutral In 25mm ² Live Out 10mm ² Neutral Out 10mm ²	6KA





RCBOs With Solid Neutral Single Pole 10kA Type AC

B CURVE
ONE MODULE

PART NO.	DESCRIPTION
H6732s	6A 230V, 30mA Tripping Current
H6733s	10A 230V, 30mA Tripping Current
H6734s	16A 230V, 30mA Tripping Current
H6735s	20A 230V, 30mA Tripping Current
H6736s	32A 230V, 30mA Tripping Current
H6737s	40A 230V, 30mA Tripping Current
H6738s	50A 230V, 30mA Tripping Current



C CURVE
ONE MODULE

PART NO.	DESCRIPTION
H6532s	6A 230V, 30mA Tripping Current
H6533s	10A 230V, 30mA Tripping Current
H6534s	16A 230V, 30mA Tripping Current
H6535s	20A 230V, 30mA Tripping Current
H6536s	32A 230V, 30mA Tripping Current
H6537s	40A 230V, 30mA Tripping Current
H6538s	50A 230V, 30mA Tripping Current



RCBOs With Solid Neutral Single Pole 10kA Type A

B CURVE
ONE MODULE

PART NO.	DESCRIPTION
H7732s	6A 230V, 30mA Tripping Current
H7733s	10A 230V, 30mA Tripping Current
H7734s	16A 230V, 30mA Tripping Current
H7735s	20A 230V, 30mA Tripping Current
H7736s	32A 230V, 30mA Tripping Current
H7737s	40A 230V, 30mA Tripping Current
H7738s	50A 230V, 30mA Tripping Current

Suitable for installation in MK Sentry Consumer Units.
Positive contact status indication.

DIMENSIONS:	CABLE CAPACITY:	SHORT CIRCUIT BREAKING CAPACITY:
114 x 18 x 79mm	Live In 25mm ² Neutral In 25mm ² Live Out 10mm ² Neutral Out 10mm ²	10KA





RCD Double Pole Type AC

25 AMP

TWO MODULE

PART NO.	DESCRIPTION
H6325s	25A 230V, 10mA Tripping Current
H7825s	25A 230V, 30mA Tripping Current
H6125s	25A 230V, 100mA Tripping Current

40 AMP

TWO MODULE

PART NO.	DESCRIPTION
H7840s	40A 230V, 30mA Tripping Current
H6140s	40A 230V, 100mA Tripping Current

63 AMP

TWO MODULE

PART NO.	DESCRIPTION
H7860s	63A 230V, 30mA Tripping Current
H6160s	63A 230V, 100mA Tripping Current

80 AMP

TWO MODULE

PART NO.	DESCRIPTION
H7880s	80A 230V, 30mA Tripping Current
H6180s	80A 230V, 100mA Tripping Current
H5880s	80A 230V, 300mA Tripping Current

100 AMP

TWO MODULE

PART NO.	DESCRIPTION
H7800s	100A 230V, 30mA Tripping Current
H6100s	100A 230V, 100mA Tripping Current
H5800s	100A 230V, 300mA Tripping Current



RCD Double Pole Type A

25 AMP

TWO MODULE

PART NO.	DESCRIPTION
H5325s	25A 230V, 10mA Tripping Current
H5625s	25A 230V, 30mA Tripping Current
H5725s	25A 230V, 100mA Tripping Current
H9325s	25A 230V, 300mA Tripping Current

40 AMP

TWO MODULE

PART NO.	DESCRIPTION
H5640s	40A 230V, 30mA Tripping Current
H5740s	40A 230V, 100mA Tripping Current

63 AMP

TWO MODULE

PART NO.	DESCRIPTION
H5660s	63A 230V, 30mA Tripping Current
H5760s	63A 230V, 100mA Tripping Current

80 AMP

TWO MODULE

PART NO.	DESCRIPTION
H5680s	80A 230V, 30mA Tripping Current
H5780s	80A 230V, 100mA Tripping Current
H9380s	80A 230V, 300mA Tripping Current

100 AMP

TWO MODULE

PART NO.	DESCRIPTION
H5600s	100A 230V, 30mA Tripping Current
H5700s	100A 230V, 100mA Tripping Current
H9300s	100A 230V, 300mA Tripping Current

Suitable for installation in MK Sentry Consumer Units.
Positive contact status indication.

DIMENSIONS:	CABLE CAPACITY:
83 x 36 x 81mm	25-63A 25mm ² 80-100A 35mm ²



RCD Type S Time Delay Double Pole

TWO MODULE

PART NO.	DESCRIPTION
H6900s	100A 230V, 100mA Tripping Current Time Delayed

Suitable for installation in MK Sentry Consumer Units.
Positive contact status indication.

DIMENSIONS:	CABLE CAPACITY:	SHORT CIRCUIT BREAKING CAPACITY:
83 x 36 x 81mm	35mm ²	10KA



RCD Four Pole Type AC

25 AMP FOUR MODULE

PART NO.	DESCRIPTION
H6425s	25A 230/400V, 30mA Tripping Current
H6525s	25A 230/400V, 100mA Tripping Current

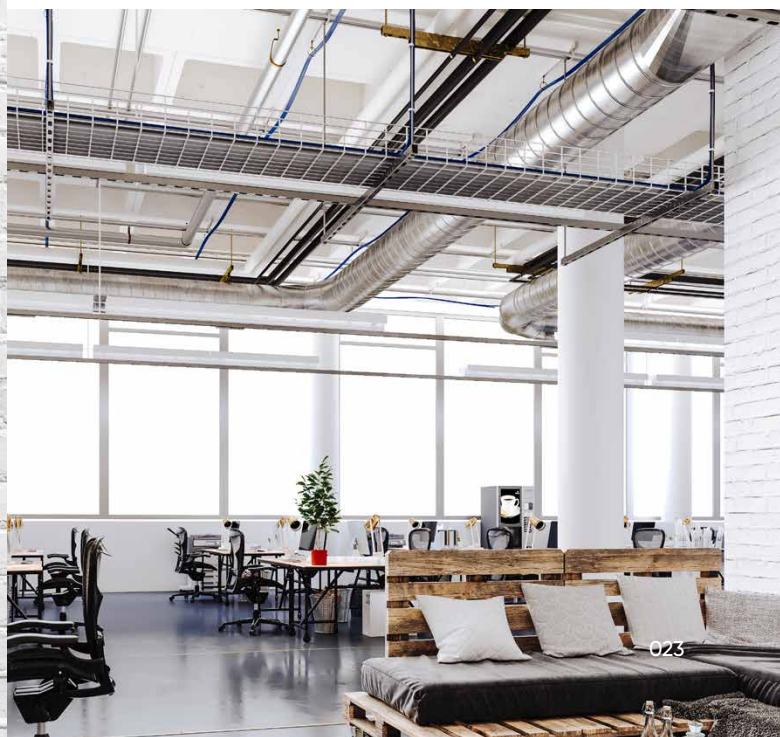
63 AMP FOUR MODULE

PART NO.	DESCRIPTION
H6463s	63A 230/240V, 30mA Tripping Current
H6363s	63A 230/400V, 100mA Tripping Current

40 AMP FOUR MODULE

PART NO.	DESCRIPTION
H6440s	40A 230/400V, 30mA Tripping Current
H6540s	40A 230/400V, 100mA Tripping Current

DIMENSIONS:	CABLE CAPACITY:
83 x 72 x 81mm	25mm ²





RCD Four Pole Type A

25 AMP
FOUR MODULE

PART NO.	DESCRIPTION
H6625s	25A 230/400V, 30mA Tripping Current
H9225s	25A 230/400V, 100mA Tripping Current

40 AMP
FOUR MODULE

PART NO.	DESCRIPTION
H6640s	40A 230/400V, 30mA Tripping Current
H9240s	40A 230/400V, 100mA Tripping Current

63 AMP
FOUR MODULE

PART NO.	DESCRIPTION
H6663s	63A 230/240V 30mA Tripping Current
H9263s	63A 230/400V 100mA Tripping Current
H9463s	63A 230/400V 300mA Tripping Current

Suitable for installation in MK Sentry Consumer Units.
Positive contact status indication.

DIMENSIONS:	CABLE CAPACITY:
83 x 72 x 81mm	25mm ²





Contactors

ONE MODULE



PART NO.	DESCRIPTION
H6220s	20A DOUBLE POLE
DIMENSIONS:	CABLE CAPACITY
83 x 18 x 74mm	25mm ²

Suitable for installation in MK Sentry Consumer Units. Automatically switches higher loads than possible with a time switch eg; off peak tariffs.

A manual override enables the temporary setting of the contactor in either the on or off position in addition to normal automatic operation.

When a contactor is mounted alongside an MCB of greater than 10 amp current rating or two contactors are mounted alongside an MCB or side by side, it is necessary to insert a blank module between them (list no.H5544s).



TWO MODULE

PART NO.	DESCRIPTION
H6420s	20A FOUR POLE
DIMENSIONS:	CABLE CAPACITY
83 x 36 x 74mm	25mm ²



THREE MODULE

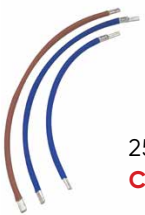
PART NO.	DESCRIPTION
H7440s	40A FOUR POLE
DIMENSIONS:	CABLE CAPACITY
83 x 54 x 74mm	25mm ²



Accessories

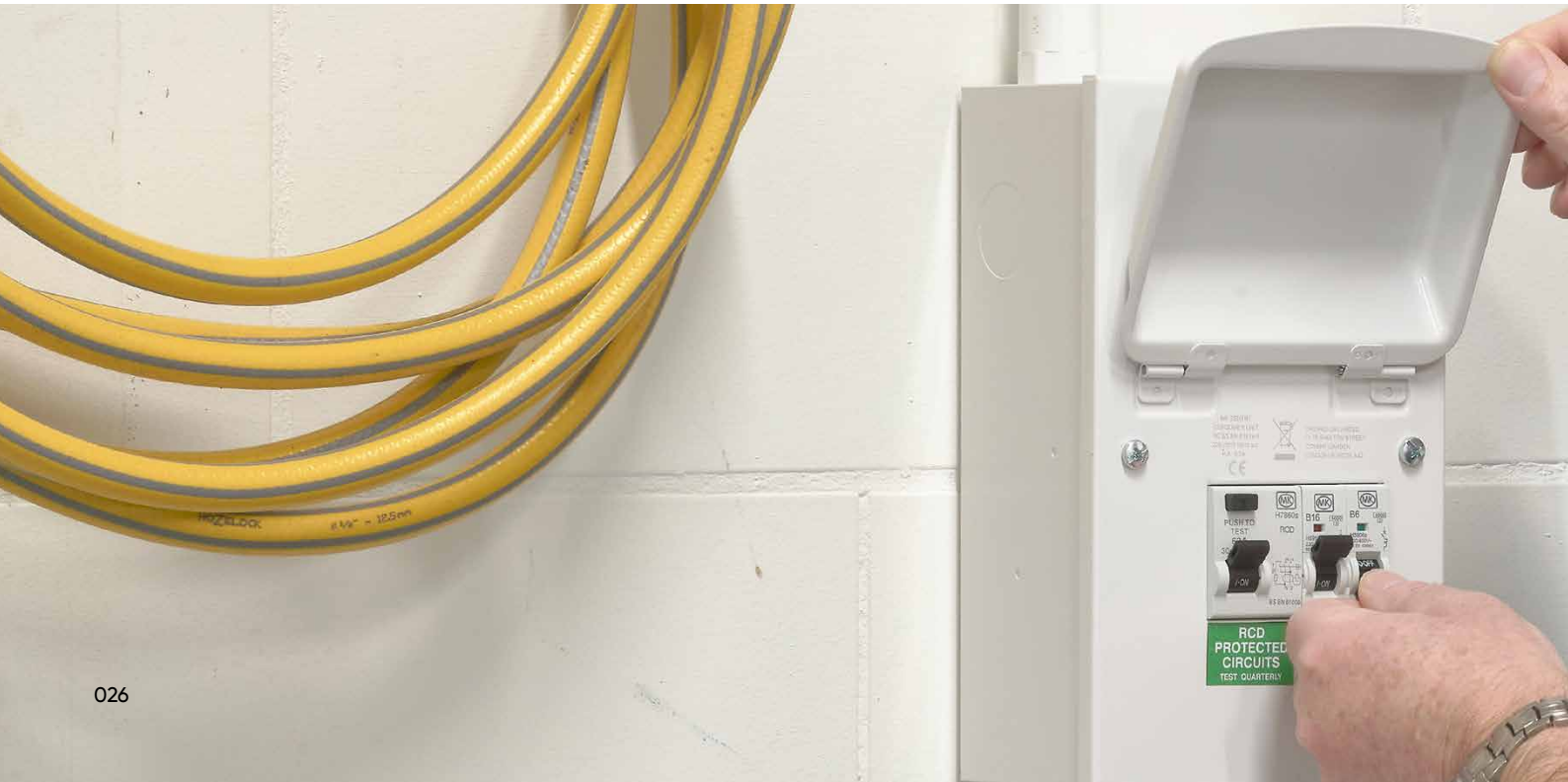
16mm²
CABLE KITS

PART NO.	DESCRIPTION
H5563s	LOAD KIT CONSISTS OF 3 CABLES (2 NEUTRAL AND 1 LIVE)
H5565s	MULTI-INCOMER KIT CONSISTS OF 1 NEUTRAL CABLE
H5567s	CABLE KIT FOR SWITCH PLUS TRIPLE RCD ARRANGEMENT CONSISTS OF TRIPLE LIVE CABLE
H5561s	CABLE KIT FOR STACKED SENTRY UNITS
H5569s	CABLE KIT FOR SURGE AND TWIN RCD
H5568s	CABLE KIT FOR SWITCH AND TWIN RCD CONSISTS OF DUAL NEUTRAL, 3 NEUTRAL AND DUAL LIVE CABLES



25mm²
CABLE KITS

PART NO.	DESCRIPTION
H6563s	SPLIT-LOAD KIT CONSISTS OF 3 CABLES (2 NEUTRAL AND 1 LIVE)
H6565s	MULTI-INCOMER KIT CONSISTS OF 1 NEUTRAL CABLE
H6567s	CABLE KIT FOR SWITCH PLUS TRIPLE RCD ARRANGEMENT CONSISTS OF TRIPLE LIVE CABLE
H6561s	CABLE KIT FOR STACKED SENTRY UNITS
H6569s	CABLE KIT FOR SURGE AND TWIN RCD
H6568s	CABLE KIT FOR SWITCH AND TWIN RCD CONSISTS OF DUAL NEUTRAL, 3 NEUTRAL AND DUAL LIVE CABLES



Accessories

PART NO.	DESCRIPTION
H9004sMET	4 WAY REPLACEMENT LID
H9008sMET	8 WAY REPLACEMENT LID
H9012sMET	12 WAY REPLACEMENT LID
H9016sMET	16 WAY REPLACEMENT LID
H9021sMET	21 WAY REPLACEMENT LID



PART NO.	H5593s RED
DESCRIPTION	METAL ENCLOSURE LOCKING DEVICE



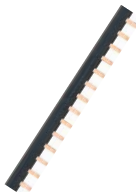
PART NO.	H5544s
DESCRIPTION	MCB BLANK – GREY DESIGNED TO FILL UNUSED MODULES IN MK SENTRY CONSUMER UNITS AND SMALL ENCLOSURES. DIN-RAIL MOUNTED



PART NO.	H5511s
DESCRIPTION	BUSBAR 11 MODULE



PART NO.	H5590s
DESCRIPTION	BUSBAR 20 MODULE



PART NO.	HAX26s
DESCRIPTION	BUSBAR COVER SUITABLE FOR INSULATING THE BUSBARS H5511S AND H5590S 10 MODULE



PART NO.	H5599s
DESCRIPTION	CONSUMER UNIT LABELS ADDITIONAL PRINTED AND BLANK LABELS, FOR IDENTIFYING DEVICES AND CIRCUITS ON SINGLE RCD BOARDS REPLACEMENT PLASTIC FRONT COVERS



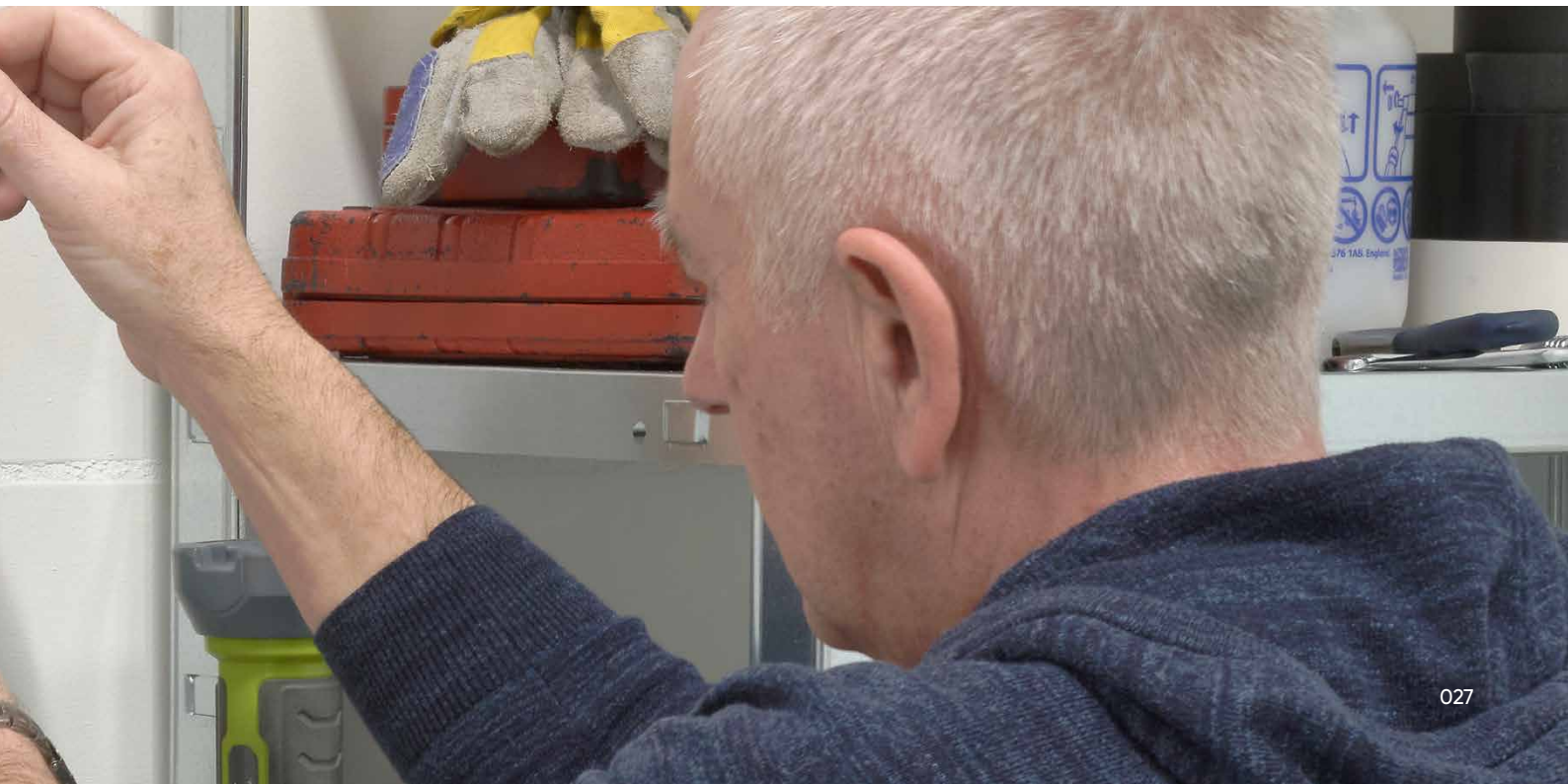
PART NO.	H6061sMET
DESCRIPTION	12 WAY METAL CONSUMER UNIT STACKING KIT



PART NO.	H6062sMET
DESCRIPTION	16 WAY METAL CONSUMER UNIT STACKING KIT



PART NO.	H6063sMET
DESCRIPTION	21 WAY METAL CONSUMER UNIT STACKING KIT



**Contact details**

CircPro (UK) Limited
3C Lamson Road,
Rainham Essex RM13 9YY
Phone: 01708 986180
Email: enquiries@circpro.co.uk
www.circpro.co.uk

Made in China

The MK Trademark is used under license from Novar ED&S Limited
Novar ED&S Limited makes no representations or warranties
with respect to these products.

These products are manufactured by CircPro (UK) Limited, a division of Yihua.

