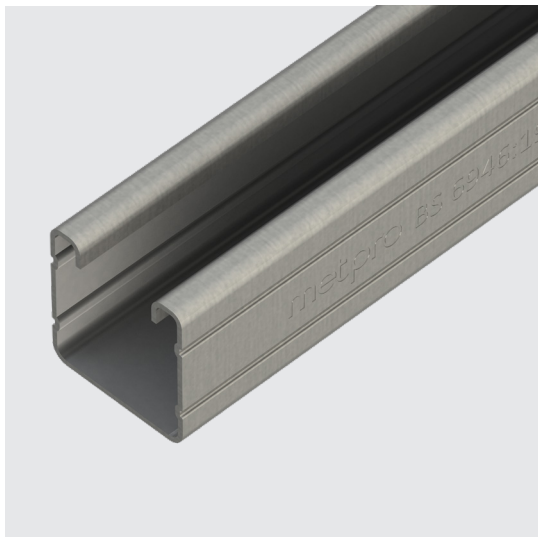


# MPC3/3

## Data Sheet



### Description

41 x 41mm / 3mtr Plain Steel Channel: Light Gauge

### Finish

Pre-Galvanised

### Material

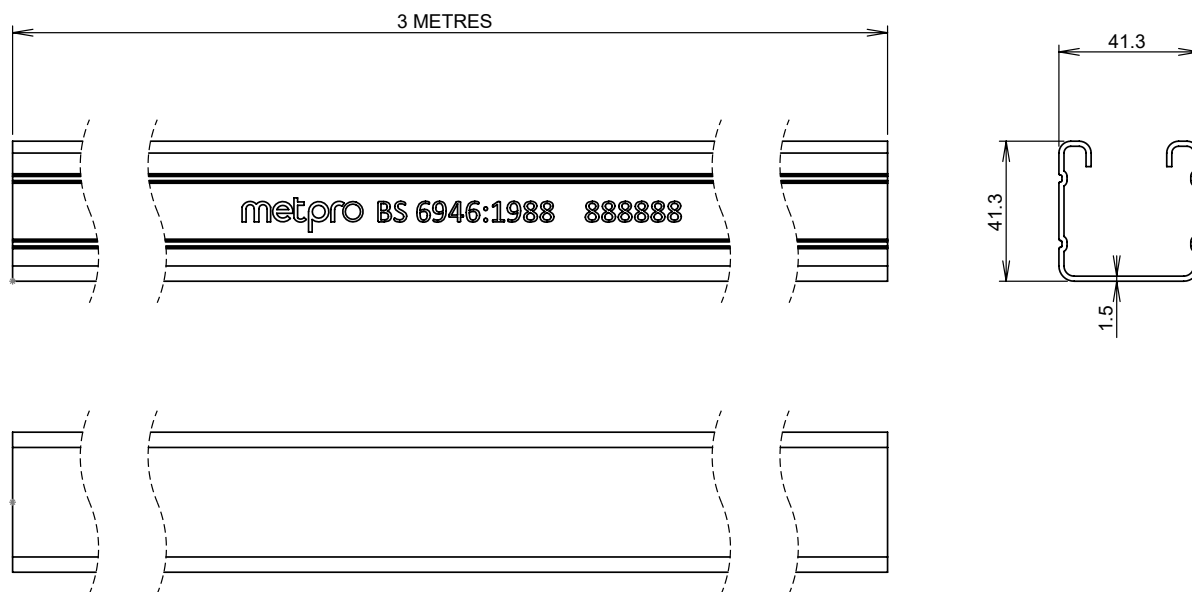
1.5mm Thickness Steel

### Packaging

Packed in qty 1

### Additional Notes

Meets the mechanical strength of BS6946:1988 & compliant to BSEN10346  
Features strengthening ribs down each side  
Each length is marked 'Metpro' for full traceability  
Benefits from a 5 year extended warranty when used as part of the Metpro Steel Bracketry System



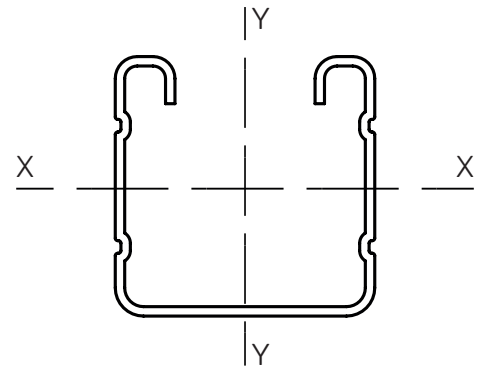
Values are nominal and with a general tolerance  $\pm 5\%$  unless otherwise specified

## MPC3/3: Load Information

### Key:

**A** Cross Section Area  
**I** Second Moment of Area  
**Z** Section Modulus  
**C** Centroid Distance  
**r** Radius of Gyration

**A** 2.17cm<sup>2</sup>  
**I<sub>x-x</sub>** 4.93cm<sup>4</sup>  
**Z<sub>x-x</sub>** 2.18cm<sup>3</sup>  
**C<sub>x-x</sub>** 1.87cm  
**I<sub>y-y</sub>** 6.18cm<sup>4</sup>  
**Z<sub>y-y</sub>** 2.99cm<sup>3</sup>  
**C<sub>y-y</sub>** 2.065cm  
**r<sub>x-x</sub>** 1.51cm  
**r<sub>y-y</sub>** 1.69cm



Length (mm)	Max. Uniform Dist. Load (kg)	Defl. at Uniform Dist. Load (mm)	Max. Uniform Dist. Load at Defl. of L/200 (kg)	Max. Uniform Dist. Load at Defl. of L/360 (kg)
250	1245	0.25	-	-
500	623	0.98	-	-
750	415	2.21	-	391
1000	311	3.93	-	220
1250	249	6.15	-	141
1500	208	8.85	176	98
1750	178	12.05	129	72
2000	156	15.74	99	55
2250	138	19.92	78	43
2500	125	24.59	63	35
2750	113	29.76	52	29
3000	104	35.41	44	24

[Click here to see our live stock levels](#)