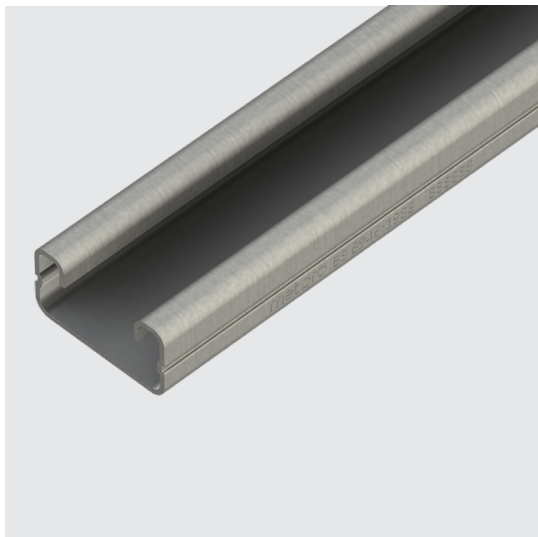


# MPC8/3

## Data Sheet



### Description

41 x 21mm / 3mtr Plain Steel Channel: Light Gauge

### Finish

Pre-Galvanised

### Material

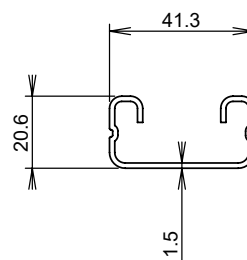
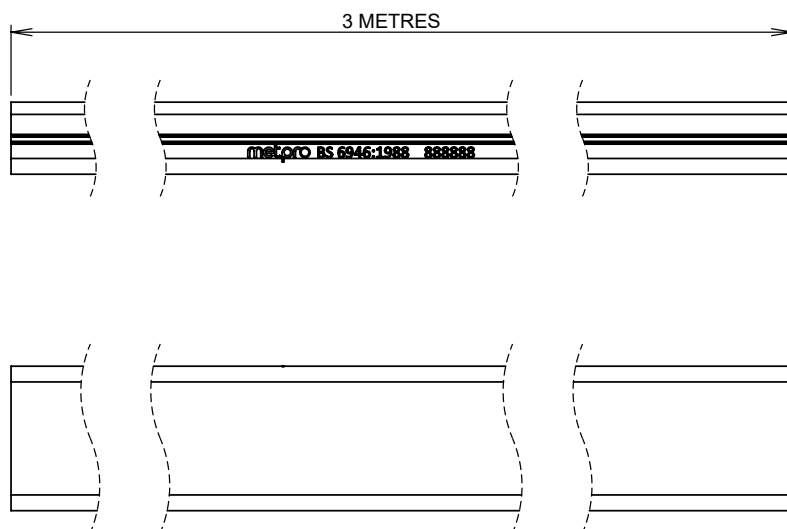
1.5mm Thickness Steel

### Packaging

Packed in qty 1

### Additional Notes

Meets the mechanical strength of BS6946:1988 & compliant to BSEN10346  
Features a strengthening rib down each side  
Each length is marked 'Metpro' for full traceability  
Benefits from a 5 year extended warranty when used as part of the Metpro Steel Bracketry System



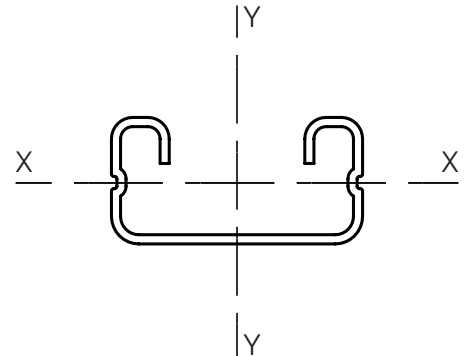
Values are nominal and with a general tolerance  $\pm 5\%$  unless otherwise specified

## MPC8/3: Load Information

### Key:

**A** Cross Section Area  
**I** Second Moment of Area  
**Z** Section Modulus  
**C** Centroid Distance  
**r** Radius of Gyration

**A** 1.31cm<sup>2</sup>  
**I<sub>x-x</sub>** 0.715cm<sup>4</sup>  
**Z<sub>x-x</sub>** 0.68cm<sup>3</sup>  
**C<sub>x-x</sub>** 1.002cm  
**I<sub>y-y</sub>** 3.611cm<sup>4</sup>  
**Z<sub>y-y</sub>** 1.75cm<sup>3</sup>  
**C<sub>y-y</sub>** 2.065cm  
**r<sub>x-x</sub>** 0.74cm  
**r<sub>y-y</sub>** 1.66cm



Length (mm)	Max. Uniform Dist. Load (kg)	Defl. at Uniform Dist. Load (mm)	Max. Uniform Dist. Load at Defl. of L/200 (kg)	Max. Uniform Dist. Load at Defl. of L/360 (kg)
250	417	0.47	-	-
500	209	1.87	-	155
750	139	4.20	124	69
1000	104	7.47	70	39
1250	83	11.68	45	25
1500	70	16.81	31	17
1750	60	22.88	23	13
2000	52	29.89	17	10

[Click here to see our live stock levels](#)