

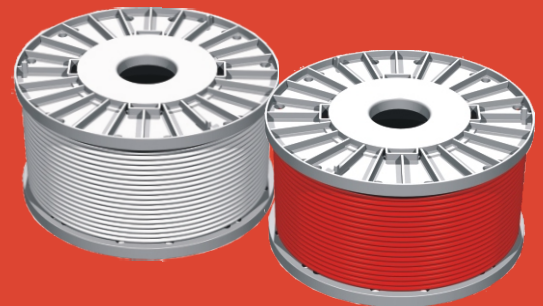
Specifications

LPCB approved to	Fire System Standard Fire Resistance Standard Fire Resistance Standard Fire Resistance Standard Fire Resistance Standard Halogen Emission Standard Low Smoke Standard	BS5839-1:2002 Clause 26.2e BS8434-2: 2003 120 mins. BS EN50200:2006 PH120 BS7629-1:1997 BS6387:1994 Clause 11 CWZ BS EN50267-2-1:1999 BS EN50268-2:2000
Designed to comply to	Emergency Lighting BS5266-1:2005	
Materials	CPC (Earth) Conductors Core Installation Screening Outer Sheath	Tinned Annealed Copper Plain Annealed Copper Fire Resistant Silicone Copper Foil Low Smoke Halogen Free Thermoplastic
Working Voltage	Core to Core Core to CPC	500V 300V
Types	Outer Sheath Colours Number of Cores Inner Cores CSA	Red or White 2, 3 & 4 Core 1.0, 1.5, 2.5 CSA
Resistance	1.0mm CSA 1.5mm CSA 2.5mm CSA	18.1 Ohms / 1Km 12.1 Ohms / 1Km 7.41 Ohms / 1Km
Minimum Bend Radius	Radius = 6 x Diameter	
Operating Temp.	Quiescent Installation	-20 to + 70°C. min 0°C
Voltage Drop (DC or Single Phase AC)	1.0mm CSA 1.5mm CSA 2.5mm CSA	44 Ohms mV / A / m 29 Ohms mV / A / m 18 Ohms mV / A / m
Approximate Overall Diameter	2 Core	1.0mm / 7.20mm 1.5mm / 7.90mm 2.5mm / 9.50mm
	3 Core	1.0mm / 7.40mm 1.5mm / 8.50mm 2.5mm / 10.10mm
	4 Core	1.0mm / 9.00mm 1.5mm / 10.50mm 2.5mm / 13.00mm
Approximate Weights	2 Core with CPC	1.0mm 8.2 Kg / 100 m 1.5mm 9.7 Kg / 100 m 2.5mm 14.4 Kg / 100 m
	3 Core with CPC	1.0mm 9.8 Kg / 100 m 1.5mm 13.2 Kg / 100 m 2.5mm 19.4 Kg / 100 m
	4 Core with CPC	1.0mm 11.2 Kg / 100 m 1.5mm 14.8 Kg / 100 m 2.5mm 22.7 Kg / 100 m
Current Rating	Cable Clipped (DC or Single Phase AC)	1.0mm 15A 1.5mm 19.5A 2.5mm 27A
	Enclosed (DC or Single Phase AC)	1.0mm 13A 1.5mm 16.5A 2.5mm 23A
Warranty	Period Identification	10 Years from Date of Manufacture Date of Manufacture Marked On Cable

The Fastest Fire Cable to Install

Ventcroft NoBurn Diamond is available in a variety of multiple core combinations all with CPC (circuit protection conductor).

500m reels and other special lengths are available.



Supplied On Robust Plastic Reels
(Reel Colour Helps Identify Enhanced from Standard Cable)

- **Installer safe and easy handling**
- **Better Reeling and damage resistant**
- **Weather and moisture resistant**

Manufacturers Recommended Installation Guide Lines

Recommended metal clip spacing 300mm Horizontal
400mm Vertical

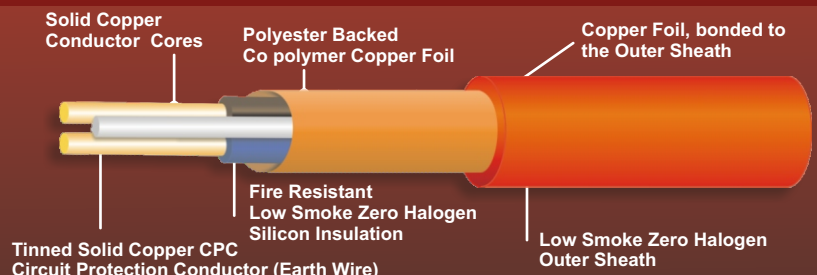
Minimum recommended installation temp. 0°C

Installation methods for current rating in accordance with BS7671/EE Wiring Regulations

The tabulated ratings are based upon 30°C ambient temperature and 70°C operating temperature

Minimum Bend Radius = 6 x Diameter

**The fastest cable to prepare for termination with superb working flexibility.
Approved to meet the exacting "ENHANCED" Fire Cable Standards.**



Ventcroft Ltd. Goddard Road, Astmoor Industrial Estate, Runcorn,
Cheshire WA7 1NQ, Great Britain. Tel: +44 (0)1928 581098, Fax: +44 (0)1928 581099

www.ventcroft.co.uk

