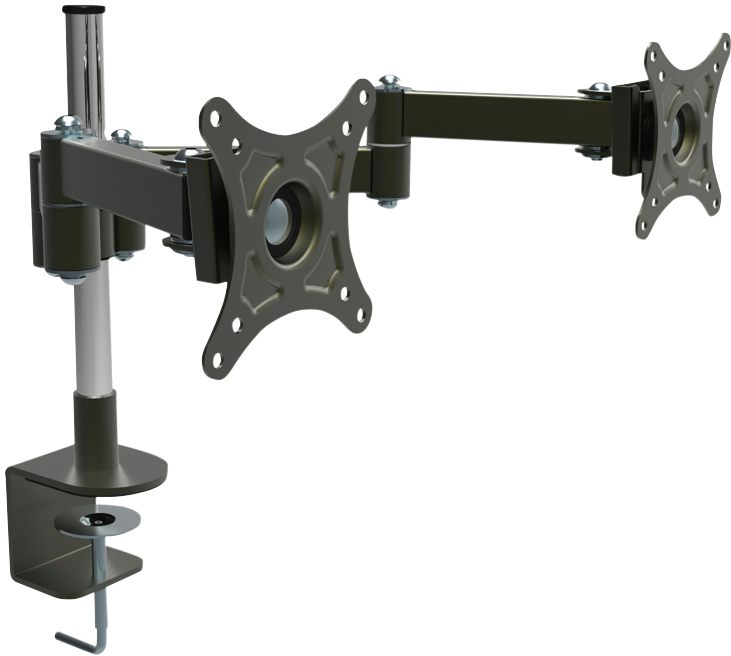


# Electrovision



**A195GA**  
**DUAL MONITOR DESK MOUNTING BRACKET**  
**Vesa Size : 100 x 100mm**  
**User Manual**  
**Notice d'Utilisation**

Thank you for purchasing an Electrovision bracket, please read these instructions carefully and leave with the user of the product for future reference.

# IMPORTANT

## Installer and Users please note:

These instructions should be read carefully and left with the user of the product for future reference.

## BEFORE USE

Inspect the product for any signs of damage. If the product is damaged, DO NOT use it, and contact your supplier immediately





## PRODUCT SAFETY

- Prior to the installation of this product, the installation instructions should be read and completely understood. The installation instructions must be read to prevent personal injury and property damage. Keep these installation instructions in an easily accessible location for future reference.
- CAUTION: The maximum load capacity is 50Kg. Use with products exceeding the maximum load capacity may cause serious injury. See appliance instructions.
- Do not install on a structure that is prone to vibration, movement or chance of impact. Failure to do so could result in damage to the display and/or damage to the stand.
- Do not place near heater, fireplace, air conditioning, in direct sunlight, or any other heat producing source. Failure to do so may result in damage to the display and could increase the risk of fire.
- It is recommended that two people perform the installation. Injury and/or damage can result from dropping or mishandling the display.
- The enclosed instructions are an aid to installation and cannot cover all eventualities, if you have any concerns regarding the mounting of the frame or brackets you should consult an expert.
- CAUTION: Before installation the mounting area should be checked that it is suitable for the weight of the bracket and screen and is free from pipes, electric cables or any other obstructions.

## TOOLS REQUIRED



## TV MOUNTING ACCESSORIES

No	Part	Qty	No	Part	Qty
A 	M4 x 12mm	8	C 	M6 x 12mm	8
B 	M5 x 12mm	8	D 	M6 Washer	8

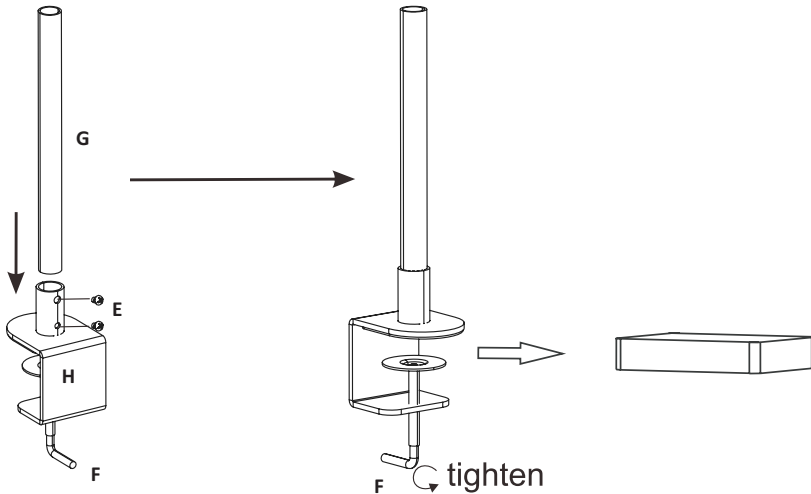


## FITTING & ASSEMBLY INSTRUCTIONS

- Select a suitable position to mount the tv bracket.
- It is recommended that bracket is mounted to a secure surface that cannot move or tip over.

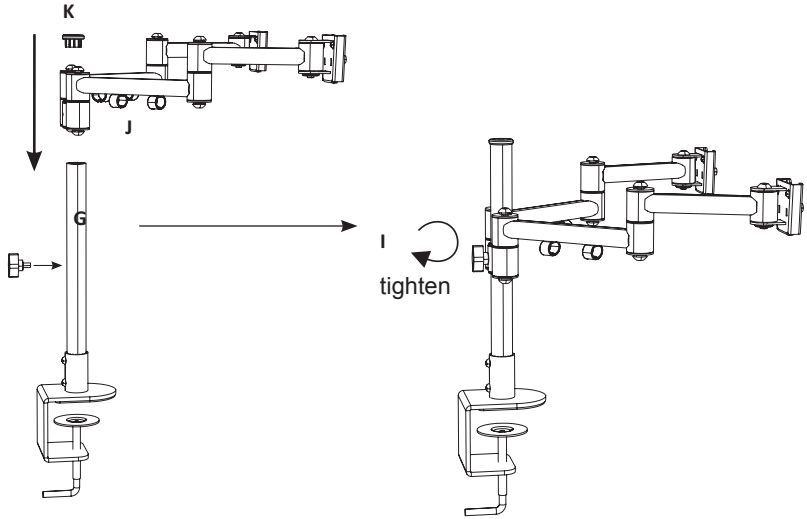
### Attach Base Support

Remove screws E from clamp base, insert support pole (G) into clamp base and insert screw (E) and tighten fully. Loosen clam lever (F) on the clamp base. Slot the base on to a suitable desk or work surface.



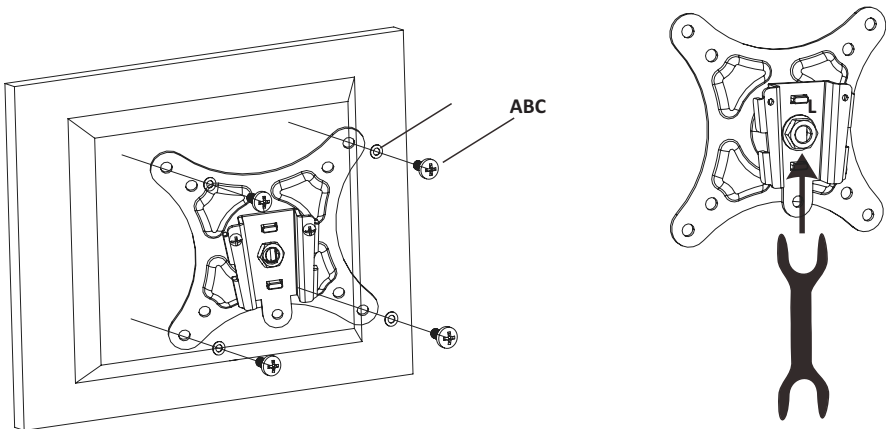
## Fit Arm To Post

Remove thumb wheel (I) from post base (G), slide on support arms (J) on to post (G). Insert thumb screw (I) into post (G) and tighten fully. Fit end cap (K) to post.



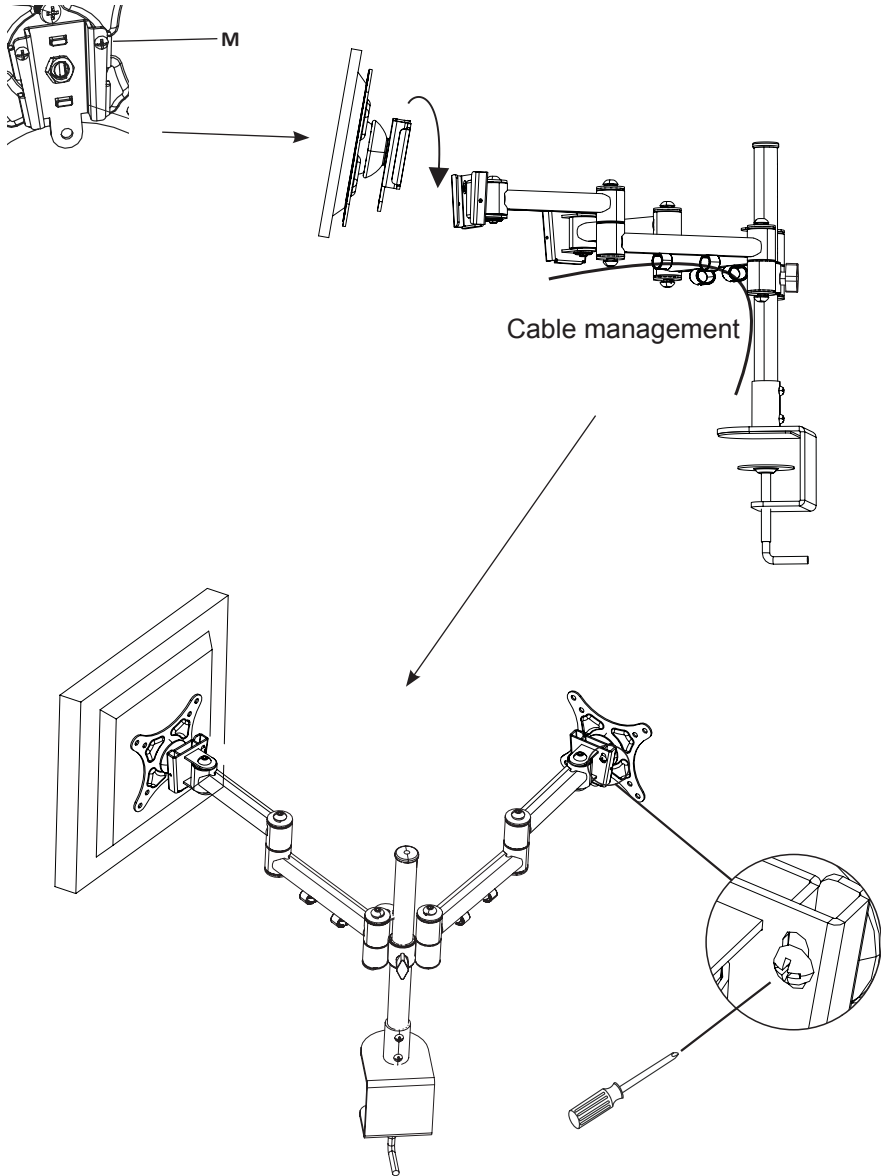
## Attach Bracket to Television

The A195G TV bracket comes with a range of TV mounting accessories designed to fit the majority of televisions. Depending upon the required parts it may be necessary to use screws A, B or C with the washers (D). Once fitted tighten nut (L) to secure the bracket. The television should be laid flat on a soft surface so as not to damage or mark the screen.



## Attach Television to Arm

Remove screws (M) from the rear of the bracket. Slide the bracket onto the arm and insert and tighten screws (M).



## **SERVICE WARRANTY**

Electrovision Ltd. guarantees the product free from defects in materials and workmanship for a period of twelve months.

Should this stand be operated under conditions other than those recommended, or any attempts are made to service or modify the stand, then the warranty will be rendered void. The product you buy may sometimes differ slightly from illustrations. This warranty is in addition to, and does not affect, your statutory rights.

Our guarantee is administered by our retailers.

If your product arrives damaged, you must contact the retailer from whom you bought it. The retailer's contact details will be on the invoice that arrived with the product, or on the e-mail you received when you placed the order. Do not contact Electrovision, only your retailer can arrange a replacement.

If the product needs to be repaired or replaced, you must contact the retailer from whom you bought it. The retailer's contact details will be on the invoice that arrived with the product, or on the e-mail you received when you placed the order.

If you have just received your product and require technical help in using it, please call our Help Desk on (0845) 459 4816

Electrovision Ltd.,  
Lancots Lane, Sutton,  
St. Helens, Merseyside.  
WA9 3EX  
[www.electrovision.co.uk](http://www.electrovision.co.uk)