



## QUEM1W

### Euro Modular Switch White

Installation Instructions



### Specifications

Work Type: Push Button  
 Power Source: Micro energy acquisition and self generating (no battery required)  
 Number of Keys: 1 (1 gang)  
 Control Distance\*: 80m (Outdoor) / 20m (Indoor)  
 Communication Model: FSK  
 Work Frequency: 433Hz  
 Work Environment Temperature: -20°C ~ 55°C  
 Control Method: Pairing with Quinetic Wireless Controller  
 Life Time: ≥100000 times  
 3 Year Warranty

### Product Overview

Quinetic Euro Modular Switches are designed to seamlessly fit into existing Euro module plates and are available in a variety of finishes. Interchangeable covers (sold separately) can be easily installed or removed from the base Quinetic module (QUEM1W). This push-button, self-powered switch incorporates a Micro Energy Acquisition (MEA) module, which converts mechanical energy into electricity to power its RF chipset. It can be used with the standard or with the dimming Quinetic receiving controllers (see controller instructions for more details about pairing).

\* Distance comes from Quinetic laboratory test result. The actual distance in practical use might vary due to environmental difference.  
 NOTE: The grid metal plate or cover might reduce the control distance, as the metal will cause electromagnetic shielding that blocks the RF signal.

### Dimming Operation

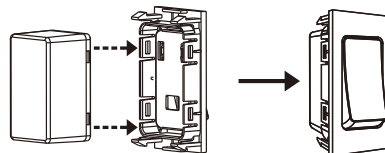
When paired with dimming Quinetic receiving controllers the modular switch can also dim the lights: Pressing the switch quickly will turn the light ON/OFF. Keep the switch pressed to dim the light to the desired level. While the switch is pressed the lights will go down from 100%-0% and they will go up from 0-100% cyclically.

### Quinetic Switch and Controller Wireless System

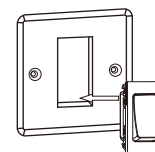
The wireless Quinetic modular switch and wireless receiving controller can be paired in any combination: a controller can be controlled by a maximum of 10 separate switches, a switch can pair with an unlimited number of controllers.

### Installation Instructions

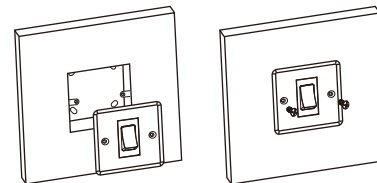
1. Ensure the mounting box is securely fixed to the wall.
2. Install the clip-on switch cover (sold separately).



3. Mount the Quinetic Euro switch module onto Euro module plates.

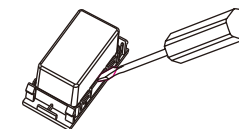


4. Make sure no conductors inside the mounting box are pinched or trapped.
5. Install the switch and plate into the junction box. Avoid over-tightening the screws, as this may damage the front plate, fixing screws, or frame.

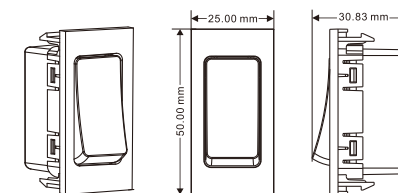


### Replacing the Switch Cover

Use a screwdriver to gently separate the clips and replace the switch cover with your preferred finish.



### Dimensions



\*For more information about pairing, instructions and troubleshoot please visit [www.tlc-direct.co.uk](http://www.tlc-direct.co.uk) website.