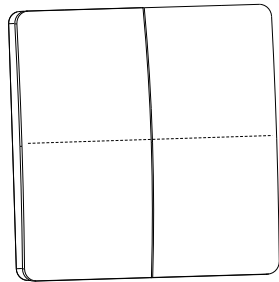




## 4 Gang Dimmable Kinetic Wireless Switch



### Installation Instructions

Read instructions carefully before installation

Patented Quinetic® Technology / Patent No. EP3306797



Self Powered



No Radiation



No Maintenance



No Wiring



Durable



Cost Saving

### Product Description

The QUWS4B/QUWS4W 4 Gang Wireless Kinetic Switch is a self-powered push-button switch equipped with a micro energy acquisition module, thus is wireless and has no requirement for batteries or another power source. This module converts mechanical energy into electricity to operate the RF chipset. Once paired with a Quinetic wireless controller, the switch can be used to turn devices ON or OFF and adjust dimming levels depending on the controller used to pair it with.

### Available Models



QUWS4W - 4 Gang White



QUWS4B - 4 Gang Black

### Specifications

**Switch Type:** Push button switch

**Switch number:** 4 gangs

**Power mode:** Kinetic energy self-power (no battery)

**Modulation Mode:** FSK

**Operating frequency:** RF 433MHz

**Control distance\*:** 80m (outdoor) 25m (indoor)

**Control Method:** Pairing with Quinetic Controller

**Installation:** Permanently fixed or placed on wall using self adhesive 3M tape (supplied)

**Working Temperature:** -20°C ~ +55°C

**Product Material:** PC

**Operational life:** 100,000 switchings

**Warranty:** 3 Years

\*Distance is based on Quinetic laboratory test results. Actual performance may vary in real-world conditions due to environmental factors or the presence of metal plates or structures near or between Quinetic devices.

### Pairing with Quinetic Wireless Controller

#### • Ordinary Pairing

QUWS4B/QUWS4W 4 Gangs Wireless Kinetic Switch can be paired with Quinetic wireless controllers. Press the pairing button on the controller for 3 seconds. Release the pairing button when the indicator light is flashing, and then press a button of the QUWS4B/QUWS4W 4 Gangs wireless kinetic switch once, the indicator light goes off and the pairing is successful.

If the controller is a dimming controller and the dimming mode is enabled, long press the paired QUWS4B/QUWS4W 4 Gangs wireless kinetic switch button to adjust the brightness, and short press to control the on/off.

#### • Directional Pairing

The Directional Pairing method allows the 4-gang switches to function as two separate groups - Left and Right:

- Short press the down button to turn OFF and the up button to turn ON.
- For dimmable Quinetic controllers, long press the down button to dim the light and the up button to brighten it.

To pair the switch with the controller:

1. Press and hold the pairing button on the controller for 3 seconds until the indicator light starts flashing.
2. Quickly press any button (from either the left or right group) on the QUWS4B/QUWS4W 4-Gang Quinetic Wireless Switch 4 times within 1 second. The indicator light will turn off, confirming a successful pairing.

### Dimmable Quinetic Weatherproof Switch Operation:

The dimmable Quinetic 4 gang switch must be paired with a dimmable Quinetic controller (see controller instructions for more details about pairing).

Pressing the switch quickly will turn the light ON/OFF.

Keep the switch pressed to dim the light to the desired level.

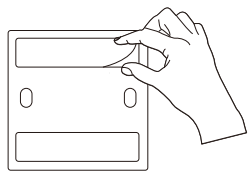
While the switch is pressed the lights will go down from 100%-0% and then will go up 0-100%.

The switch can also be paired with a non-dimmable controller for on/off use only.

### Switch Installation

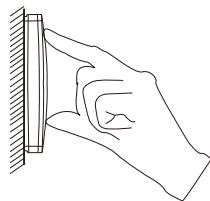
#### Method 1:

Use the double-sided adhesive tape supplied to mount the switch on a stable, smooth and clean surface such as glass, marble and ceramic tiles.



1

Attach double-sided tape to the back

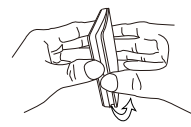


2

Stick the switch on a clean surface

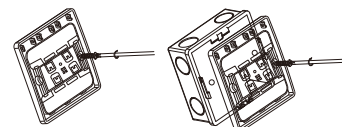
#### Method 2:

Carefully open the switch panel as shown in the figure below and fix the switch on the wall using screws or fix the switch on an existing wall box.



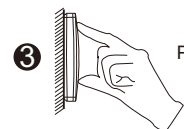
1

Carefully open the switch panel



2

Fix on the wall using expansion screws or on an existing wall box

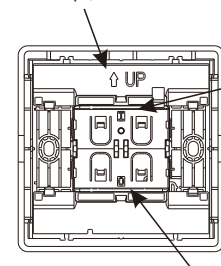


3

Press the key panel back to the base

### Distinguish the Switch "Up" and "Down"

In order to install the switch in the correct position in case of directional pairing, open the cover and check the internal marked arrow and the word "UP" indicating that this side must be "UP". The "I" below also indicates "Up", and "O" indicates "Down".



### Troubleshooting

After pairing if the switch only turns a light OFF or only dims, unpair by pressing the controller pairing key for about 10 seconds until the indicator light goes off.

Pair again following the controller instructions and check for correct operation.

### Dimensions

