

E7+

Smart immersion water heater controller



Smartphone
Bluetooth app



Future-ready for Time of
Use/Dynamic Tariffs



Adaptor plate for
easier retrofits

The new E7+ from Secure is the latest version of the Electronic 7 water heater controller. E7+ is designed to control one or two 3kW immersion heaters, utilising off-peak electricity tariffs to provide a full tank of hot water whenever required. Each heater can be programmed separately for maximum energy saving and control.

Designed to be the successor to both the Electronic 7 and the Economy 7 Quartz, it is easy to install or retrofit. Now with a new compact interface that is perfect for newer installations, as well as an adaptor plate, which allows fresh installations to be more ergonomic and streamlined, whilst still making the E7+ a plug-in replacement for all the existing legacy water heaters from Horstman.

The E7+ can be controlled by the Secure Bluetooth-enabled app, within a property, and there is an optional plugin Wi-Fi adaptor that will turn the E7+ into a truly smart unit you can control from anywhere. This app is also used by our range of smart-capable programmable thermostats - C1727 and H374.



Applications

- Designed for modern tariffs as well as cheap overnight rates, such as Economy 7 and other off-peak tariffs or similar
- Future ready for Time of Use Tariffs
- Can be set to accommodate utility tariffs that offer cheaper electricity periods throughout the day
- Suitable for use with single, dual, or twin element immersion heaters

Benefits

- Easy to retrofit using the provided adaptor plate and fully interchangeable with all Horstmann/Secure Economy 7 controllers
- No Wi-Fi necessary for local control of hot water via app using Bluetooth
- New streamlined compact design
- Easy to upgrade to full smart (remote) control using Wi-Fi adaptor
- Uses the same app as the C1727 and H3747 smart-capable programmable thermostats
- Tamper-proof programme security feature for landlords
- 7 years no quibble warranty

Features

- Bluetooth-enabled app for local control (Android and IOS)
- Full smart control from anywhere with optional Wi-Fi adaptor that does not need a hub or gateway
- Full 7-day programming with up to 48 time periods * only via Wi-fi and dynamic tariffs
- Manual Boost button - ideal for 30 minutes, 1, or 2-hour top up without changing the set program
- Programmable boost - can be programmed so that it will heat only a small part of your tank at a set time each day
- Electronic on/off switch
- Measures estimated energy consumed for boost and off-peak in kWh via the app
- Includes 7-day programmer with 3 On Offs straight from the device, more can be added via the app

7

years
no quibble
warranty



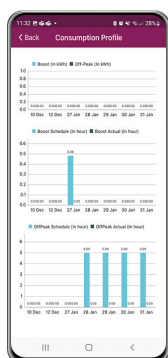
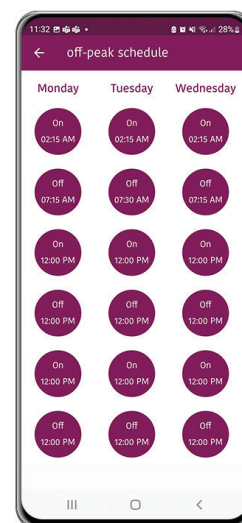
Available in iOS & Android
app stores

SECURE

The new E7+ now has a mobile app that allows any mobile with Bluetooth to change the programs. Furthermore, with the optional plug in WI-FI adaptor you can now control your hot water from anywhere.

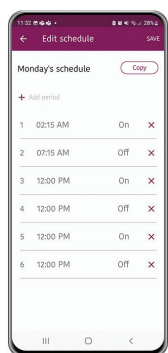
The app works locally via Bluetooth and also remotely if you fit the optional Wi-Fi adaptor. In Bluetooth mode you can see and adjust the schedule or boost the hot water from your phone. With the additional Wi-Fi adaptor installed you can control everything on your system all the time on the go. With the new smart capable range there are no gateways or hubs to install and power, the adaptor is simple to plug into the front of the receiver.

The app is a bonus as the E7+ is completely programmable locally just like the original Electronic 7. It's there for those who want and works with almost any smart phone.



Energy Monitoring

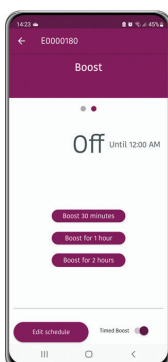
The new mobile app now comes with the ability to monitor energy consumption for both peak and off peak. This will show you the hours you used the most energy and on which days, to help with better energy management. This feature contains the historical usage data and can be accessed from the consumption tracker tab on the home page. This works with Bluetooth or Wi-Fi connected systems regardless and does not require any extra subscriptions or added services.



Full 7-day programming

The E7+ now has a streamlined menu system that makes programming your hot water easy to accomplish directly from the unit.

As well as this, with the additional mobile app viewing and amending the schedule is now simply a matter of opening the app and selecting what you would like to change. From instantly launching the boost to changing the schedule for your off peak on the go. The E7+ has 3 on off periods out of the box and with the app you can add more than this, up to 48 hours.



Boost function

The E7+ now comes with greater boost options to provide more flexibility for busy lives. Being able to set a dedicated boost program or just click the app for an instant top up allows you to save money by only heating a smaller amount of water quickly, as opposed to waiting for the main tank. There are even popular time options included in the app such as a 30 minute selection for those who only need a small boost to their hot water. This is an increasingly popular way of saving energy when you only require a small regular supply of hot water as opposed to always heating the main tank.

The E7+ is also future capable of being ready for Time of Use tariffs which would allow the energy company to directly supply an off peak schedule. This is available for Wi-Fi connected systems whose energy company provide the newer off peak tariffs that automatically provide a dynamic off peak schedule.



The E7+ comes with an adaptor plate for retrofits. This allows fresh installations to be more ergonomic and streamlined, whilst still making the E7+ a plug in replacement for all the existing legacy water heaters from Horstman - Electronic 7 and Economy 7 Quartz.

Upgrade from our traditional immersion heater controls



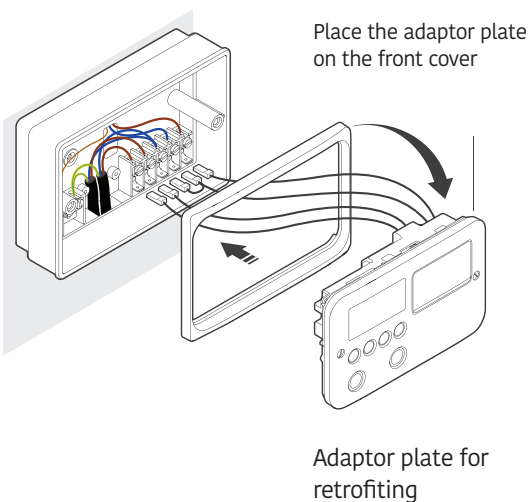
Electronic 7



Economy 7 Quartz



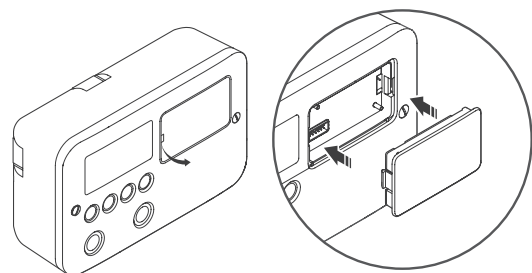
Economy 7 Quartz 2hr



Place the adaptor plate on the front cover

Adaptor plate for retrofitting

Easy to upgrade - to fully smart



Optional Wi-Fi adaptor to switch from Bluetooth to Wi-Fi if you need it



Technical specifications

Electrical

Contact rating	13 Amps 230V AC suitable for immersion heaters up to 3kw
Contact type	Micro-disconnection on control
Supply	230V 50Hz

Environmental

Pollution degree	Degree 2 normal situations
Moisture protection	Ordinary
Enclosure protection	IP30

Features

Shock protection	Class 1
Live parts	Enclosed
Operating temperature range	0°C to 35°C
Battery reserve	Approximately 2 years total power disconnection
Clock	am/pm Indication Winter/Summer indication
Programme options	Off-peak - up to 48 *via Wi-Fi On/Off time periods; Boost - programmable automatic boost and 1/2, 1, and 2-hour manual boost

Mechanical

Dimensions	170 x 115 x 60mm (excluding rocker switch)
------------	--

Radio

Compliance	Bluetooth BLE compliant
Operating frequency	2.4 GHZ
RF range	~60m, line of sight

Compliance

Product Standard/Safety: BSEN / EN 60730-1, BSEN / EN 60730-2-7
RED Radio: ETSI EN 300 328 RED EMC: ETSI EN 301 489-1, ETSI EN 301 489-17, BS EN 60730-2-7

Africa

sales_africa@securemeters.com

Australia

sales_australia@securemeters.com

Europe

sales_europe@securemeters.com

India

sales_india@securemeters.com

South East Asia, South Asia

sales_sea@securemeters.com

UAE

sales_uae@securemeters.com

UK

sales_uk@securemeters.com

www.securemeters.com