

INSTALLATION
INSTRUCTIONS



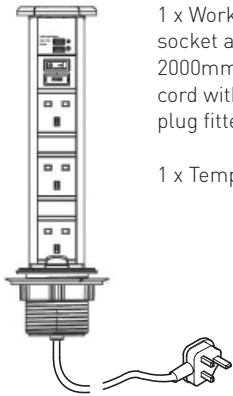
CODE: SE80050AL/CH/GM/SS



IMPORTANT: please read these instructions before commencing installation and retain for future reference.

Components

Tools required



1 x Worktop socket and 2000mm power cord with 13A plug fitted

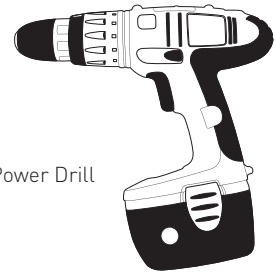
1 x Template



1 x Threaded locking ring



90 - 92 mm Hole Cutter



Power Drill

Important safety information

- If in doubt installation must be carried out by a qualified electrician.
- Minimum installation distance from edge of worktop is 25mm.
- Install on smooth flat surface(s) only.
- Do not install over jointed or uneven surfaces (e.g. tiles, melamine joints etc.).
- Users must not bend the handles beyond their natural vertical position and both handles should be returned to their resting positions when pushing the unit down.

- If the external flexible cable of this socket is damaged, please contact manufacturer / service agent for replacement product*.
- This is a Class 1 product. Must be earthed.
- If in doubt regarding these installations, consult a qualified electrician.

*Subject to terms.

IP54

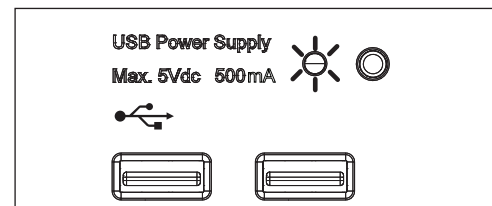
The Pop-up worktop socket has a protection rating of IP54 in accordance with BS EN 60529:1992 when in retracted position. This prevents any water ingress into the unit from spraying water up to an angle of 60° from vertical and also provides dust protection.

Care should be taken to prevent the possibility of water ingress into the unit during use; please ensure unit is not located near a water supply with earth leakage protection.

An external earth (ground) connection point is provided next to the cable exit at the bottom for the unit. For added earth protection, it is advisable to connect an additional earth lead from this point to any well grounded point near the unit (if available). Ensure that sufficient slack is available for this lead to allow the unit to operate correctly.

USB CHARGER SPECIFICATION

- Output Voltage: 5VDC
- Output Current: MAX. 650mA x 2*
- Individual switch for power on/off
- LED indicator function when power on



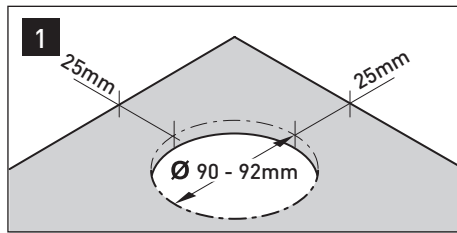
*Please check output current of USB product before use. Green LED indicates Sensiopod is charging, red LED indicates power off.

Waste Electrical & Electronic Equipment (WEEE)

The Symbol on the product, or on the document accompanying the product, the crossed out wheellie bin symbol, indicated that this product may not be treated as household waste. Instead it shall be handed over to the applicable collection point for the recycling of electrical and electronic waste.

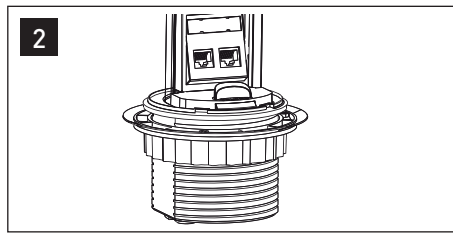


Installation

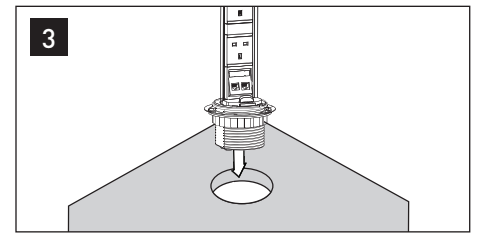


Cut out 90 - 92mm diameter hole in work surface. Allow minimum 25mm clearance around the cut hole. When choosing location, select a surface between 10mm and 50mm thick.

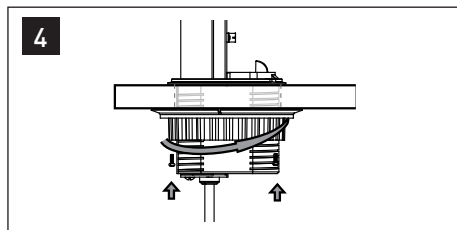
ATTENTION: Ensure there is sufficient space under the installation surface, for the unit when it retracts to the closed position.



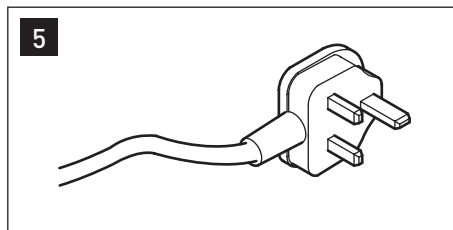
The locking ring with rubber washer is supplied in the packaging. If attached to the mounting collar, remove it by rotating it in an anti-clockwise direction prior to lowering the unit into its final location.



Insert socket into the hole.

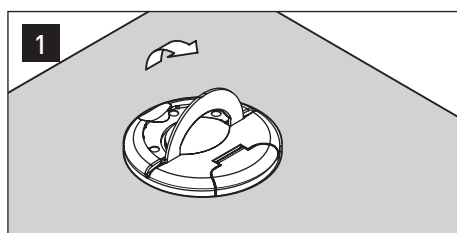


Place locking ring into collar. Identify and align arrows on the collar and locking ring to ensure the thread is engaged properly. Turn the locking ring clockwise to tighten. Make sure rubber washer is compressed tightly on underside of surface. Tighten the screw until ring firmly grips the surface.

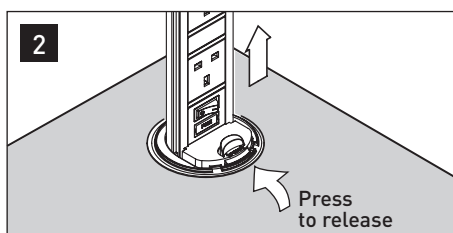


Connect cable to power supply, once work has been completed correctly, the product is now ready to use.

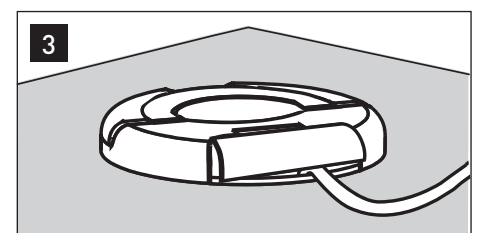
Operation



To use the Pop-up Socket, gently lift up the silver handle on the top cover until all socket outlets are exposed and the green stop/release button clicks and locks the unit in place.



Press the master switch on. A green light confirms that power is available. You can use all power sockets. The unit can be retracted in position by pressing the green stop/release button and push the unit down until it's flush with the surface. And leaving the engaged cables on the window of the top cover.



Insert Sensiopod into the hole to discreetly hide away when not in use.

Maintenance & Care

- Ensure that the power is disconnected prior to cleaning.
- To keep the finish of this product, wipe over with soft cloth periodically.
- Clean the socket with a damp cloth and mild detergent, dry immediately.
- Do not use harsh chemical solvents, it may dis-colour or damage the finish.
- Never force the Sensiopod up or push down - always check there are no obstructions that could interfere during retraction.