



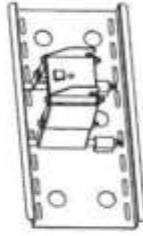
BRACKETS SERIES

129 104 INSTALLATION GUIDE

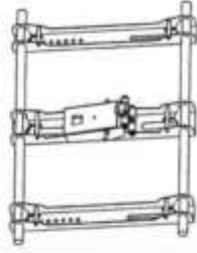
! Warning: Some plasma may require two people to lift. We are not responsible for personal injury or product damage.

Thanks for choosing our products! This product is designed to mount flat panel televisions weighing up to 75 kg. to a vertical wall. It allows you to tilt your new television up to 15° without the use of tools.

Supplied parts:



(1) Wall plate-a



(1) Fixing Plate-b



(4) M4x25 Bolt-d



(4) M5x25 Bolt-e



(4) M6x25 Bolt-f



(4) M8x25 Bolt-g



(4) M4 Washer-h



(4) M5 Washer-i



(4) M6 Washer-j



(4) M8 Washer-k



(4) Safety Button-l



(6) Lag Bolt-m



(6) Concrete Anchor-n

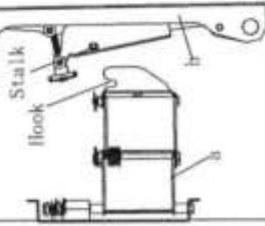
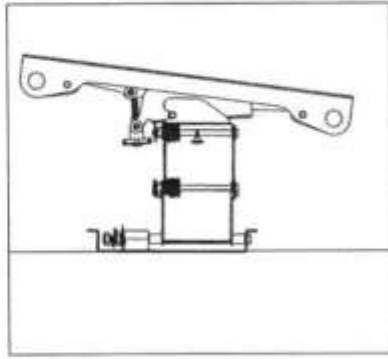


Diagram 3a

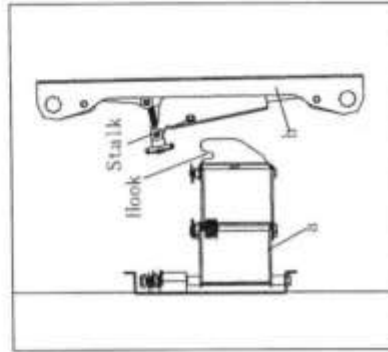


Diagram 3b

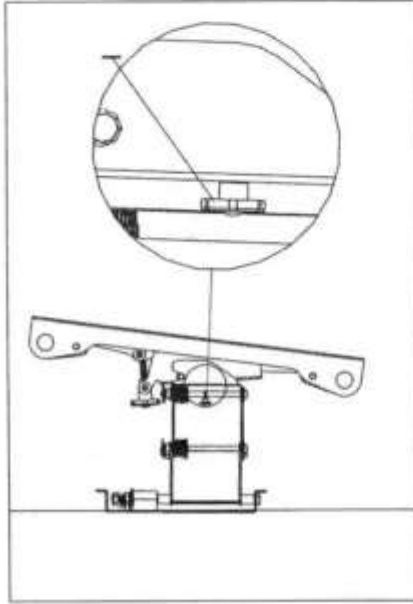


Diagram 3c

Step1, mount two TV plate (b) to the back of the Plasma TV.
 First, determine the proper bolt (d, e, f, g) and washer (h, i, j, k) according to the size of the holes on the TV, and install them to the TV. Make sure the Display Brackets are vertically centered and level with each other.

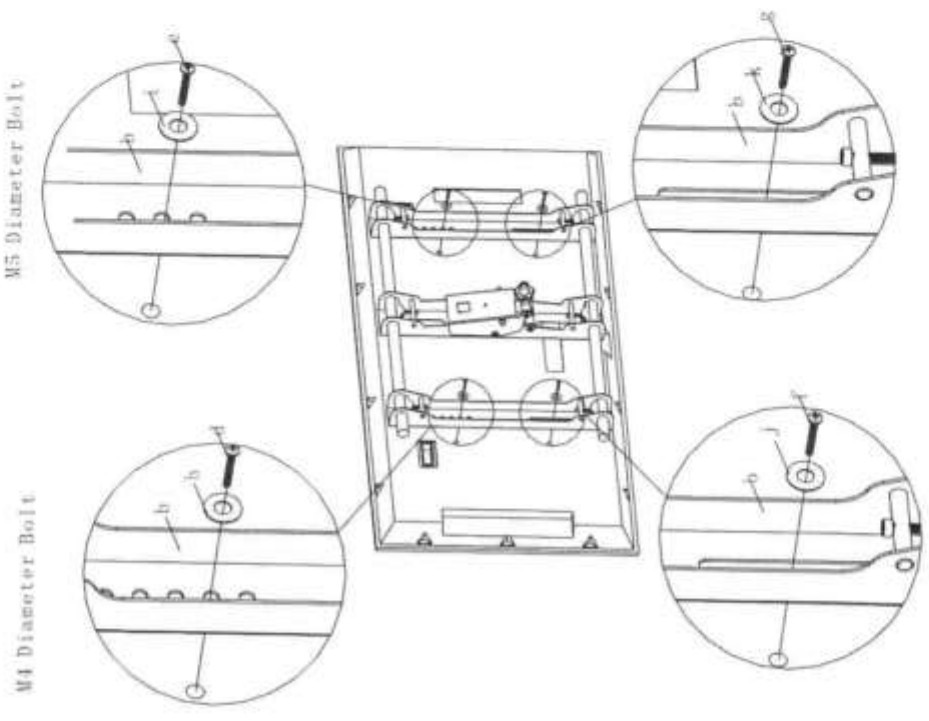


Diagram1

Step2: Mount the wall plate to the wall (wood, bricks, solid concrete and stone mounting options are provided)

A. For wooden wall mounting:
 Determine the right place to mount the plasma firstly, then mark where the stud are located with a awl or thin nail shown in diagram 2a. The distance between two stud must not less than 300mm. Pre-drill a 65mm deep hole in wall in each stud with a diameter 4.8mm drill bit. Make sure these holes are in the centre area of the studs and level with each other. Use the wall plate as a template to mark the location of the second hole in each stud, and drill the same hole. Fix the wall plate to the wall with 4 bolts (m).

B. For bricks, solid concrete and stone wall mounting:
 Use the wall plate as a template to mark 6 holes location on the wall. The outer holes must fall to the left and right of the two holes in the middle of the plate. Three in the top row of the slots three more in the bottom row. Please make sure these holes are level and there is at least 150mm between any two holes. Pre-drill these holes with a 12.8mm drill bit to at least 65mm in depth. Insert a expanding bolt (n) into each of these holes. Attach the wall plate to the wall using 6 lag bolts (m).

Diagram2a

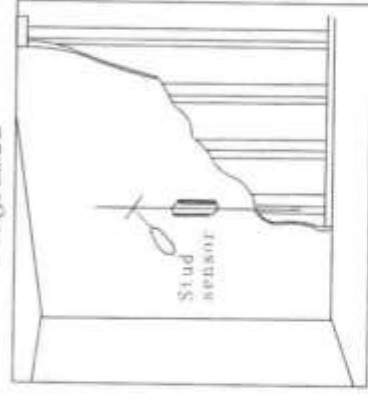
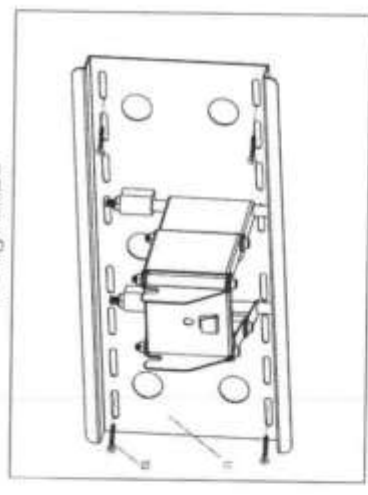


Diagram2b



Step3. Hang the TV with brackets onto Wall Plate.
 First lift the TV till the grooves of the two Display brackets overlap the Wall Plate. Hang brackets to Wall Bracket by sliding the grooves of the TV brackets onto the Wall Plate. Then rotate angle of the TV with brackets to lock the end of the brackets to the Bottom of the Wall Plate. Like Fig.3c. And set up the safety button (1).