



Whole house extract units that ensure permanent renewal of air in single dwelling houses or multi-dwelling blocks (individually). The unit is complemented with selfadjusting extraction BAR valves, (installed in kitchen, toilets, bathrooms) and self-regulated air inlets located in the main rooms (dining rooms, bedrooms).

The unit includes a radiofrequency remote control and a humidity sensor so that it can regulate de flow rate depending on the indoor air quality.

Configuration

- Three-speed motor (two of them are adjustable).
- 4 Ø125 mm extract air spigots, to use in bathrooms and kitchens. Include gasket and pivoting 90° possibility.
- 1 Ø125 mm outlet spigot pivoting 360°.
- 3 caps to seal unused spigots.
- 1 template to facilitate fitting on the ceiling or wall.
- Wireless remote control with 3 speeds and automatic mode.
- Proportional humidity probe incorporated into the equipment.



Specific applications



Single dwellings VMC

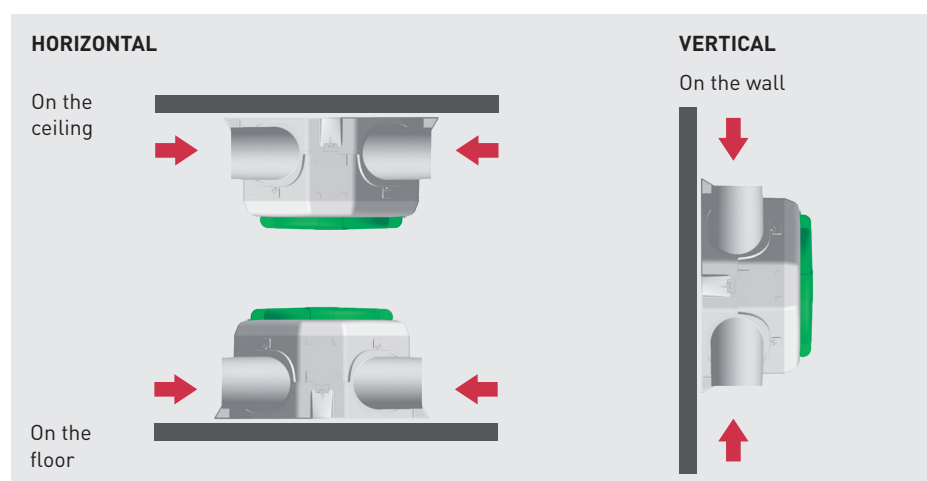


Multi dwelling blocks VMC

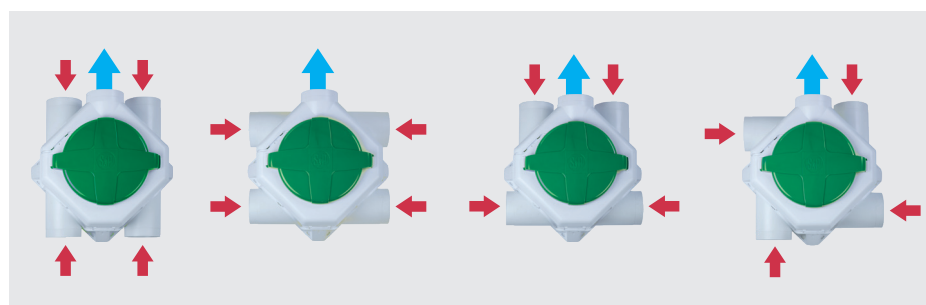


REMOTE CONTROLLER

Wireless 3-speed remote control within the scope of supply.



Alternative fitting



Flexibility

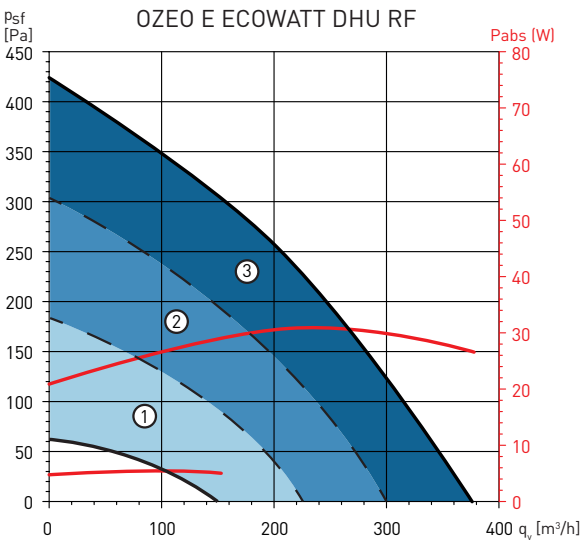


TECHNICAL CHARACTERISTICS

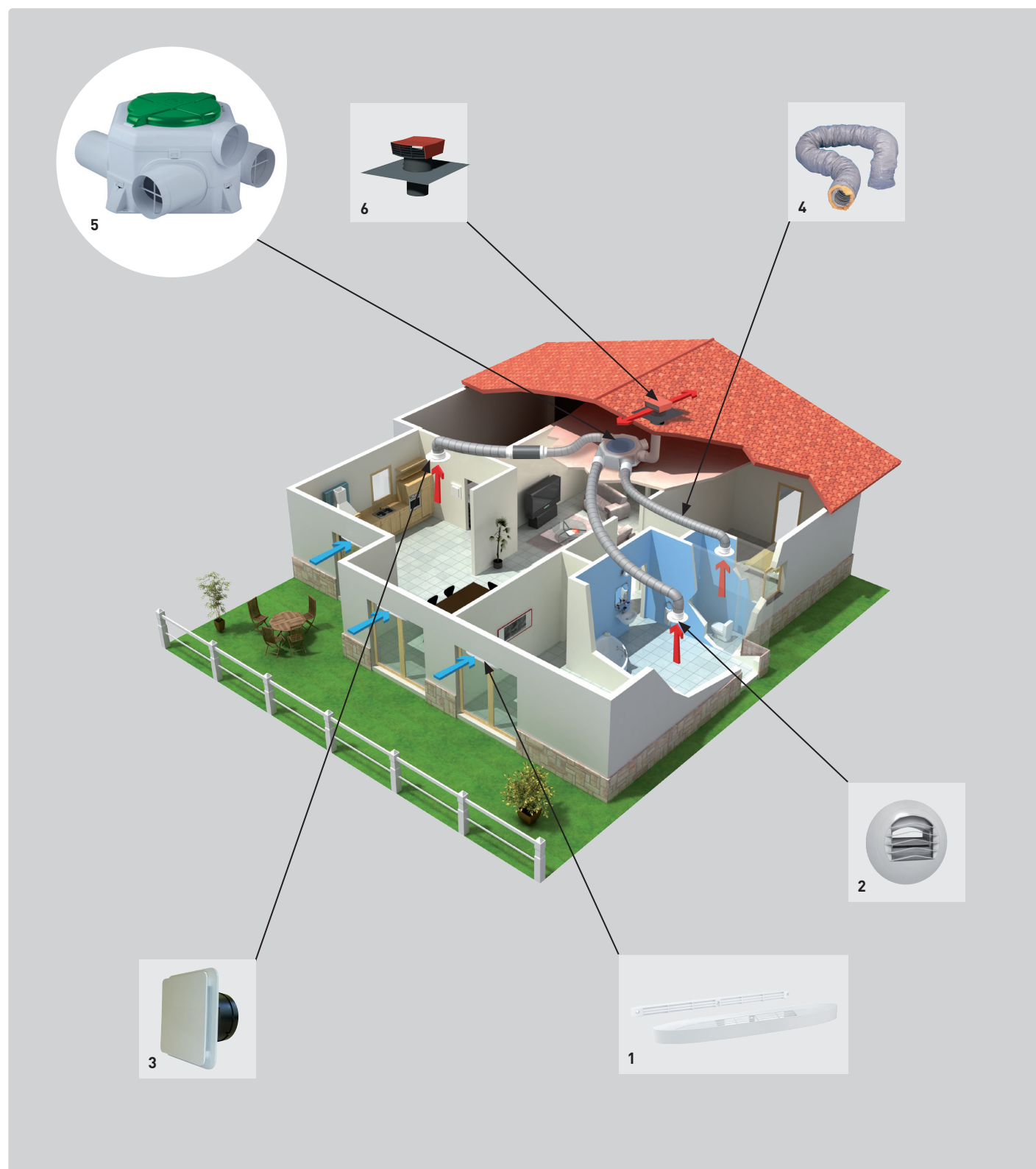
Model	Motor	Voltage (V)	Maximum absorbed power (W)	Maximum absorbed current (A)	Sound pressure radied Lp(a) at 3m. (dB(A))
OZEO E ECOWATT DHU RF	EC	230	30	0,25	27 (300 m³/h - 100 Pa)

PERFORMANCE CURVES

Colored areas represent adjustment zones for each speed, by a potentiometer.

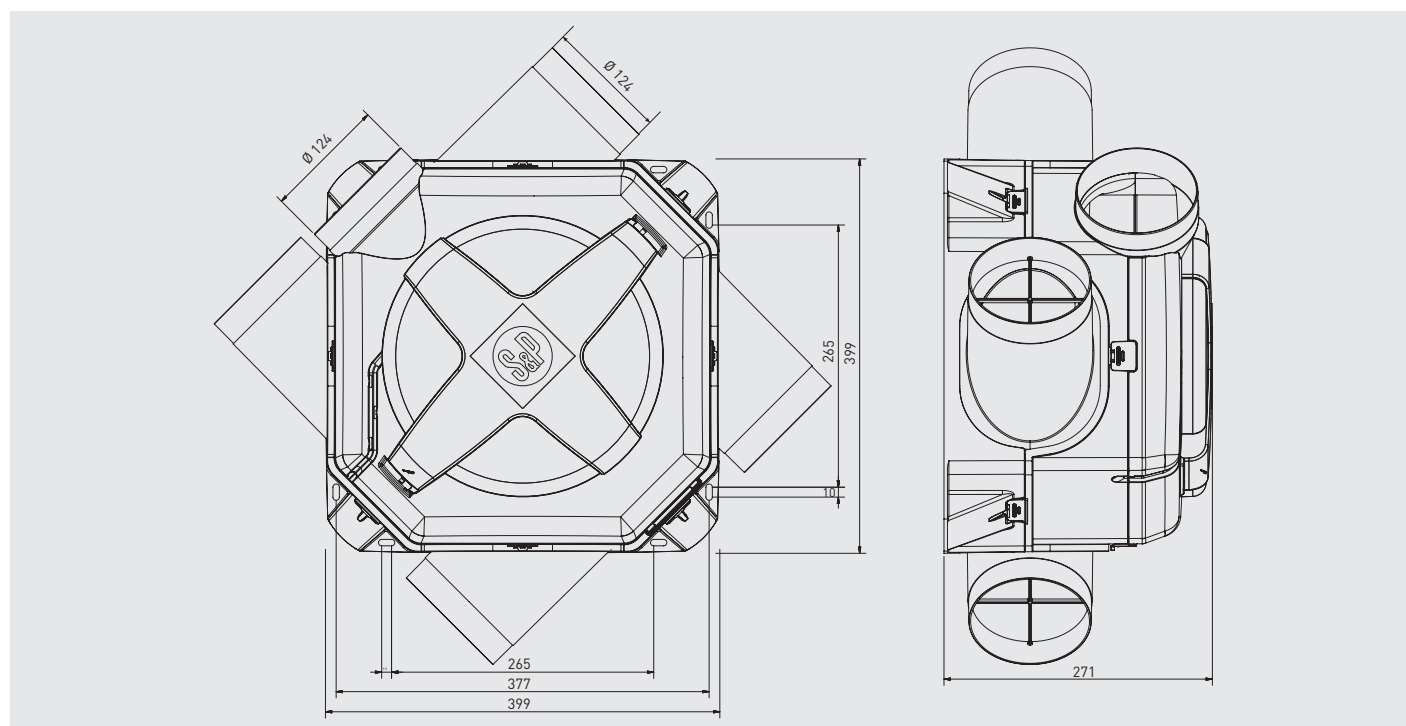


OZEO E ECOWATT DHU RF CENTRALIZED SELF-ADJUSTING



1. Self-adjusting acoustic air inlets ECA.
2. Self-adjusting extraction valves BAR.
3. Exhaust valve BDOP
4. PVC or rectangular plastic ducts.
5. Whole house extract units OZEO E ECOWATT DHU RF.
6. Roof terminal cowl CT.

DIMENSIONS (mm)



ACCESSORIES



AIRSENS RF
Intelligent sensors available in three different versions: CO₂, VOC, and RH. AIRSENS RF sensors connect to an OZEO unit via radio frequency (wireless). A single OZEO unit can link with up to four sensors.



ALIZE BAR
Self-adjusting extraction valves.



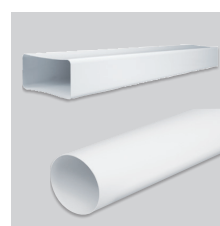
BDOP
Exhaust or supply valve



EC-N and ECA
Standard and acoustic, self-adjusting air inlets.

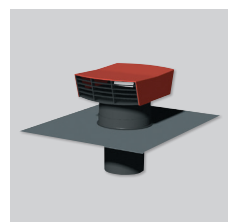


GP/GP Iso
PVC flexible ducts.

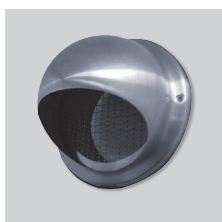


TUBREC
Rectangular ducts in flame-retardant plastic.

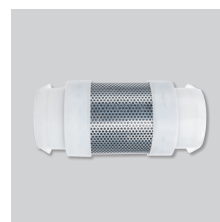
TUBCIR
Circular ducts in flame-retardant plastic.



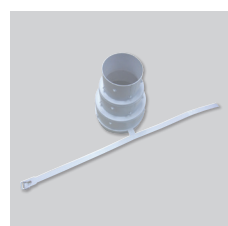
CT
Roof cap.



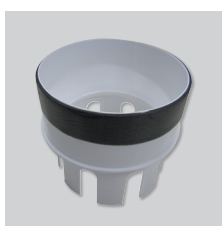
PAQS
External fresh air grille on facade with insect guard.



LA
Silencer.



ATRF 125/100/80
Reduction elements to adapt flexible ducts.



ADRF 100/80
Reduction to connect rigid ducts of different diameters.



FLEXIREC
Semi-flexible oblong ducts.

FLEXICIR
Semi-flexible circular ducts.